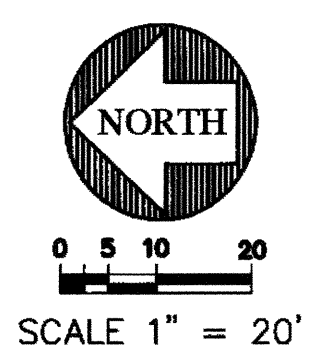
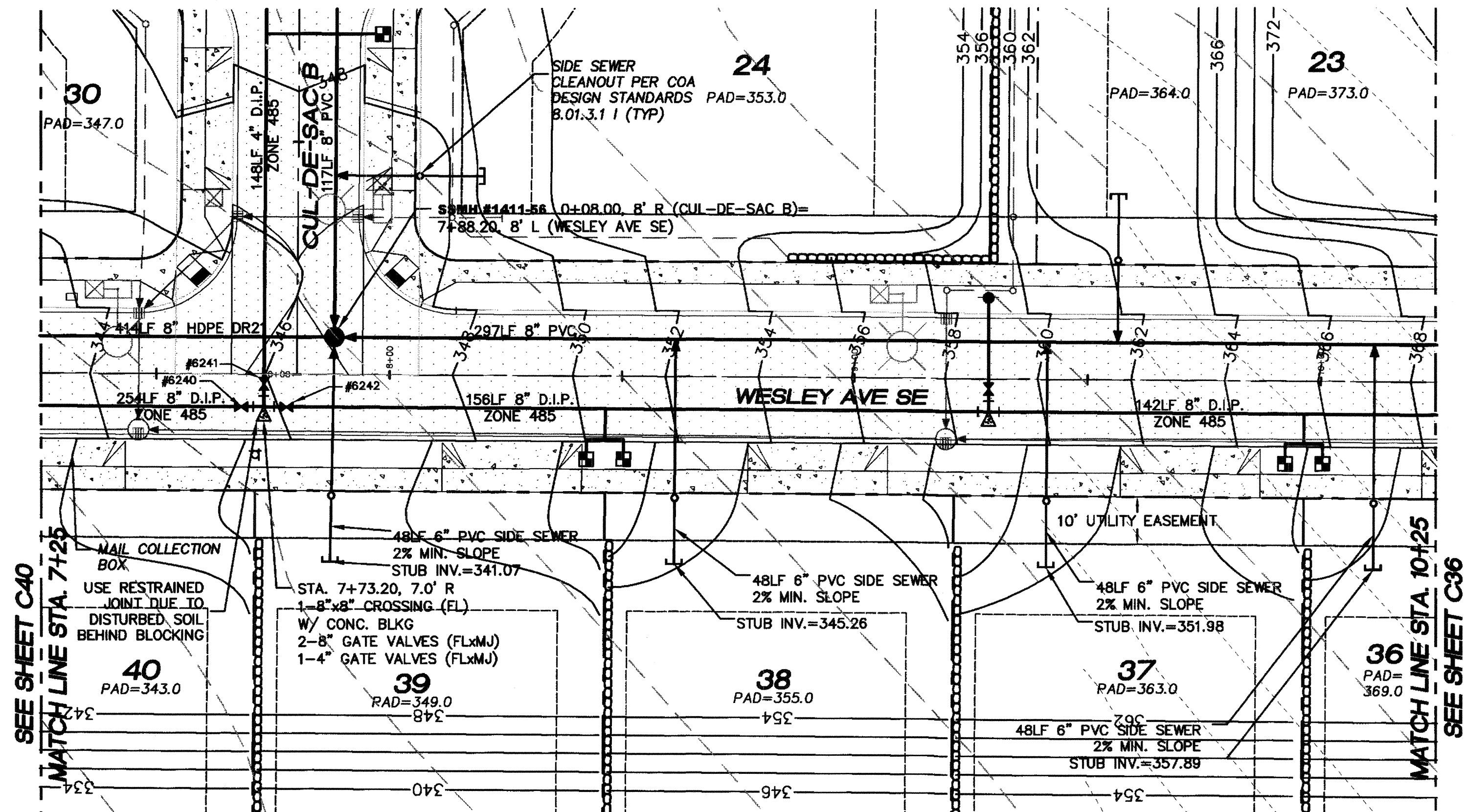
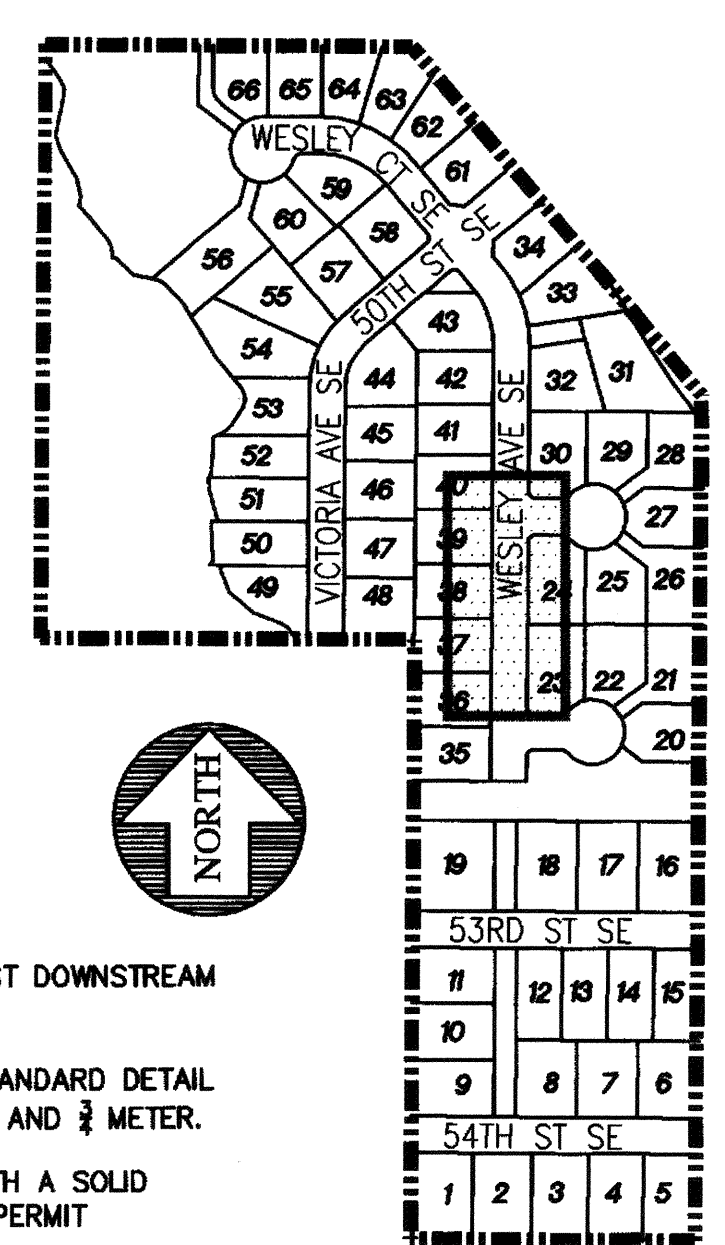


SEE SHEET C39

PORTION OF THE SW 1/4, SECTION 32, T. 21 N., R. 5 E., W.M.

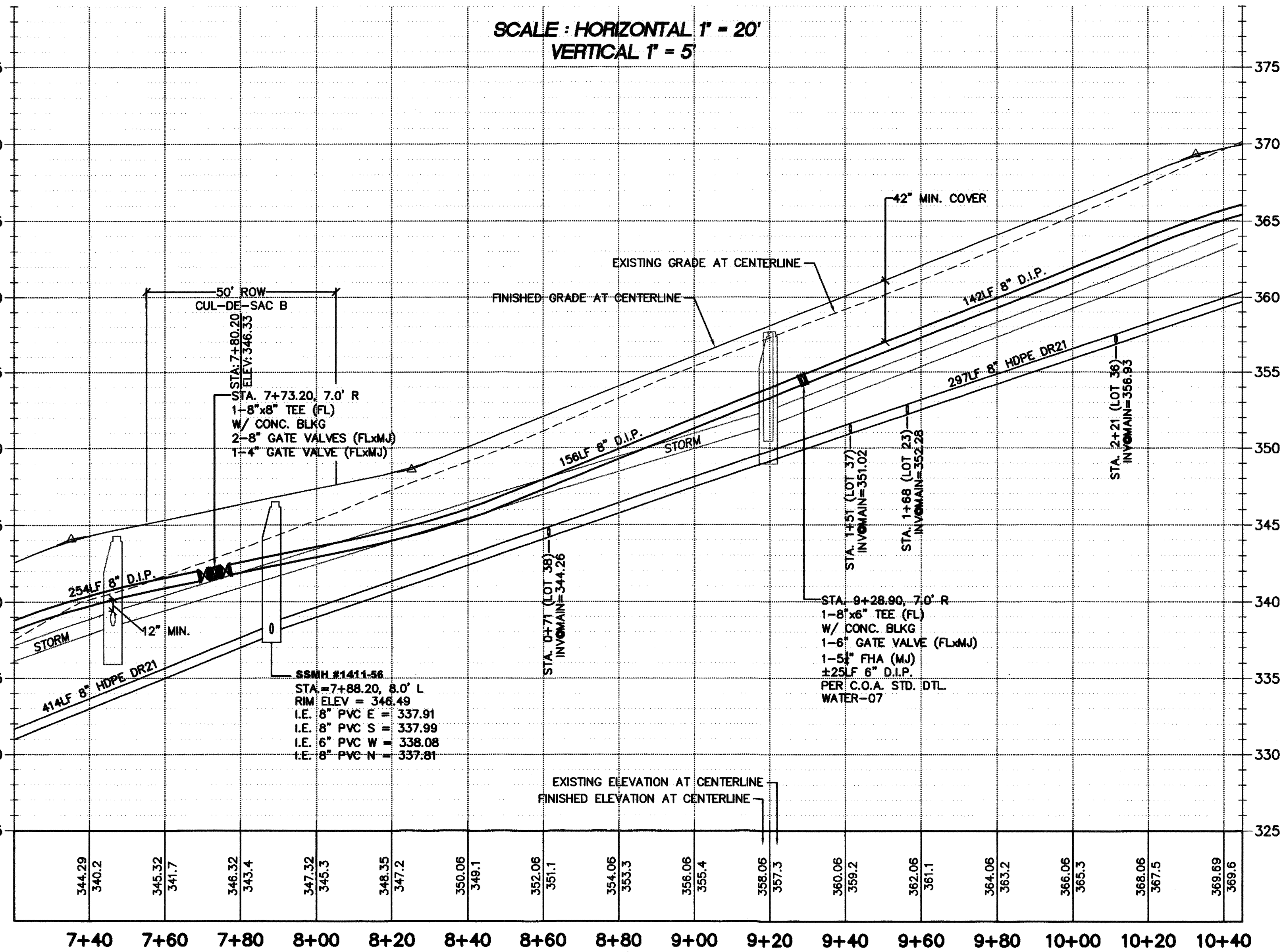


KEYMAP



NOTES:

1. ALL PIPE SLOPES NOTED ARE FT./FT.
2. ALL SANITARY SEWER MANHOLES ARE STATIONED TO CENTER OF STRUCTURE
3. ALL PVC PIPE SHALL BE SDR-35 UNLESS OTHERWISE NOTED
4. SIDE SEWERS TO BE INSTALLED PER C.O.A. STD. DTL. SEWER-01 AND SEWER-02
5. SEWER STUBS TO BE MARKED USING A PAINTED 2"x4" MARKED "SEWER"
6. WATER SERVICE STUBS TO BE MARKED USING A PAINTED 2"x4" MARKED "WATER"
7. ALL SIDE SEWERS ARE STATIONED FROM THE NEAREST DOWNSTREAM MANHOLE
8. ALL WATER METERS SHALL BE 3/4 INCH PER C.O.A. STANDARD DETAIL WATER-13, 1" MINIMUM SERVICE LINE BETWEEN MAIN AND 3/4 METER.
9. SANITARY SEWER MANHOLES SHALL BE EQUIPPED WITH A SOLID LOCKING LID WITH THE WORDS "CONFINED SPACE - PERMIT REQUIRED" CAST INTO LID.



LEGEND

- SANITARY SEWER CLEANOUT
- SANITARY SEWER MANHOLE
- FIRE HYDRANT ASSEMBLY
- CAP, WATER MAIN W/TEMPORARY 2" BLOWOFF ASSEMBLY
- WATER METER
- ELBOW
- CB TYPE I
- CB TYPE I W/SOLID LOCKING LID
- CB TYPE II
- CB TYPE II W/SOLID LOCKING LID
- PROPOSED EASEMENT
- PROPOSED 6" ROOF DRAIN CONNECTION
- EXISTING PAVEMENT
- PROPOSED PAVEMENT
- PROPOSED SIDEWALK
- RETAINING WALL
- BUILDING ENVELOPE
- SIDE SEWERS
- STOP SIGN
- STREET NAME SIGN

RECORD DRAWING CERTIFICATION  
THESE DRAWINGS CONFORM TO THE CONTRACTOR'S  
CONSTRUCTION RECORDS.

BY: \_\_\_\_\_ DATE \_\_\_\_\_  
TITLE/POSITION: \_\_\_\_\_  
CONFIRMED BY CITY: \_\_\_\_\_ DATE \_\_\_\_\_

PROJECT REF: FAC07-0016  
H.S. May 14, 2013  
THESE PLANS ARE "APPROVED" FOR CONFORMANCE WITH  
THE CITY OF AUBURN'S ENGINEERING DIVISION  
REQUIREMENTS.

APPROVED BY: *Dennis Sells*  
DATE APPROVED: 5/15/13



15445 53RD AVE. S.  
SEATTLE, WA 98188  
PHONE: (206) 431-7970  
FAX: (206) 388-1648  
WEB SITE: PACENG.COM

**Pacific  
Engineering  
Design, LLC**  
Civil Engineering and  
Planning Consultants

**LAKELAND HILLS ESTATES**  
CITY OF AUBURN

FOR: OWA NORTHWEST, LLC.  
CITY OF AUBURN BUILDERS  
17837 1ST AVENUE SOUTH, PMB#2  
NORMANDY PARK, WA 98148  
PHONE: (206) 428-3884  
FAX: (206) 286-9519

PROJECT NO.: 12022  
DRAWN BY: ENM  
ISSUE DATE: 07-17-07  
SHEET REV.: 3-20-2013

**WATER AND SEWER  
PLAN AND PROFILE  
(WESLEY AVE STA.  
7+25-10+25)**

05056WA06-C25.DWG  
**C38**  
SHEET 38 OF 55