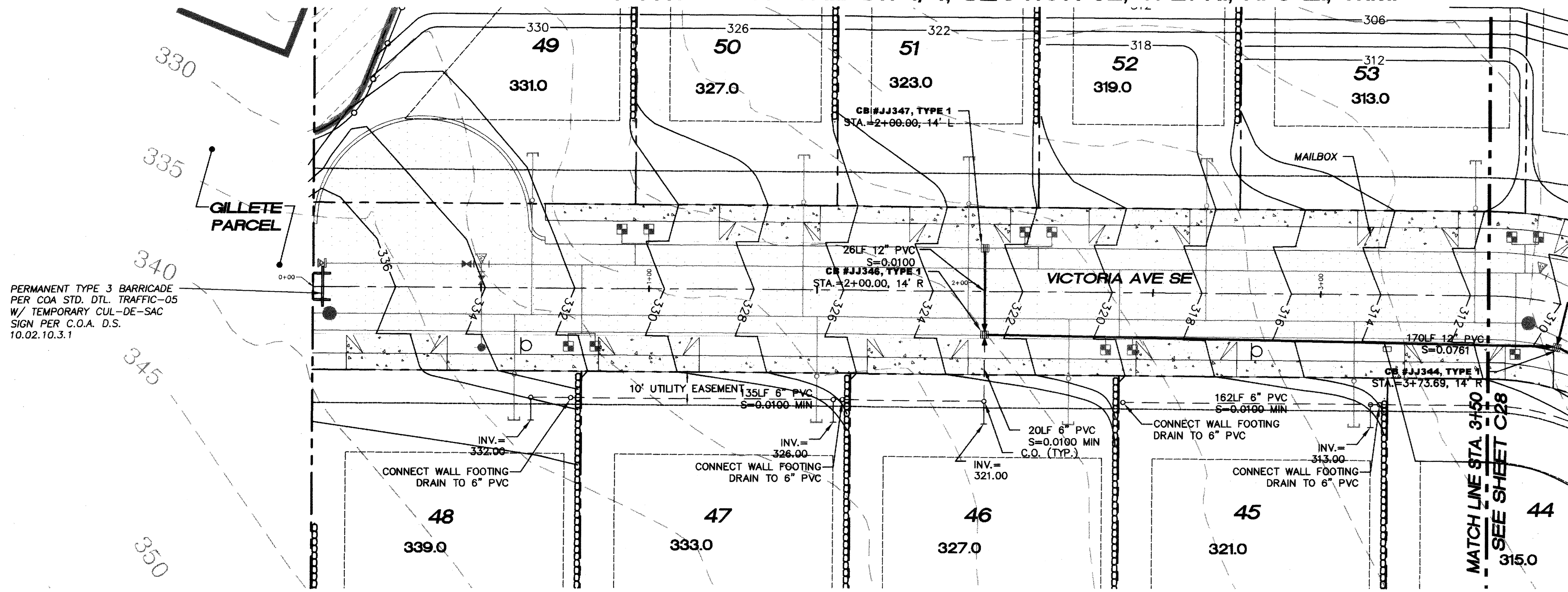
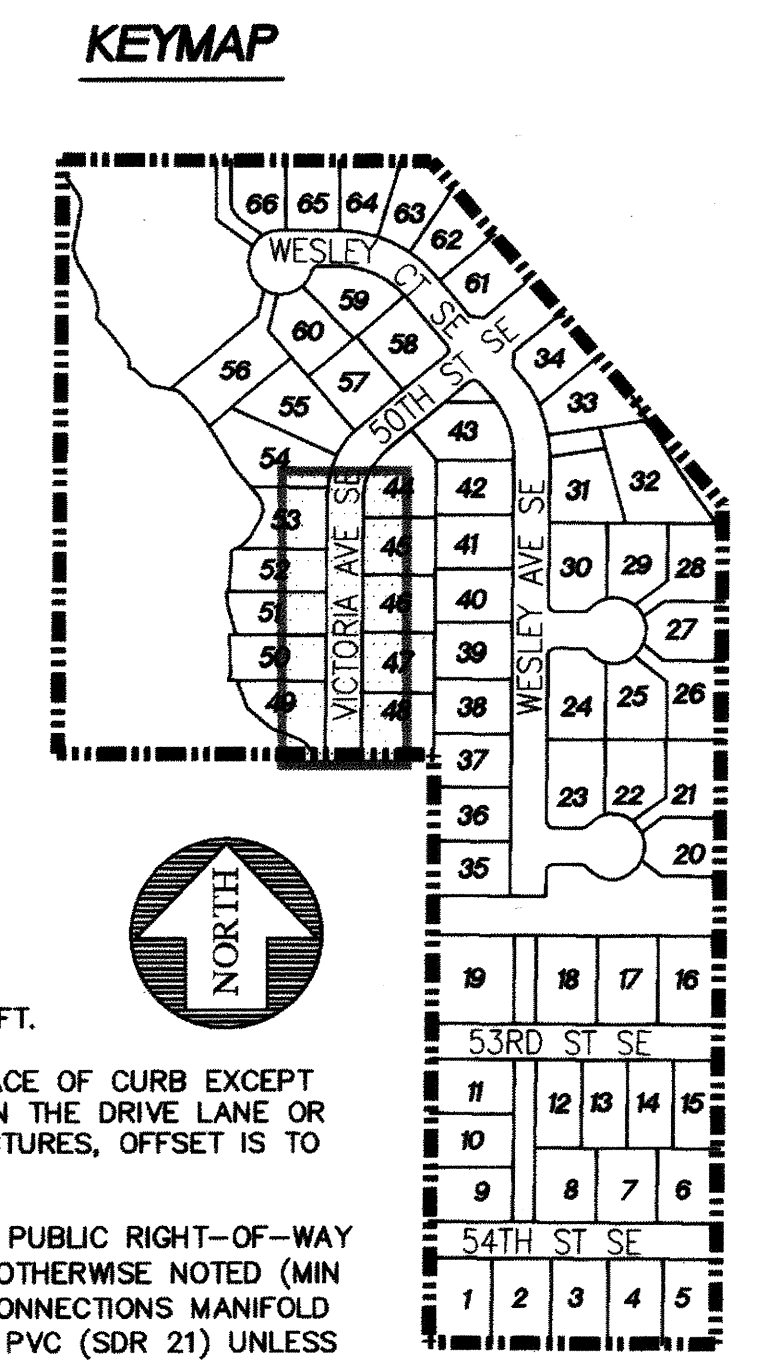
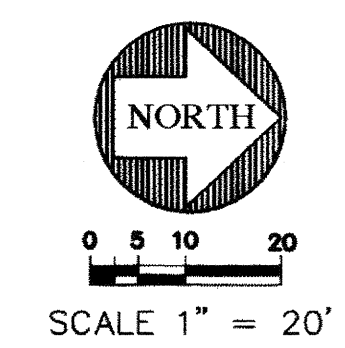
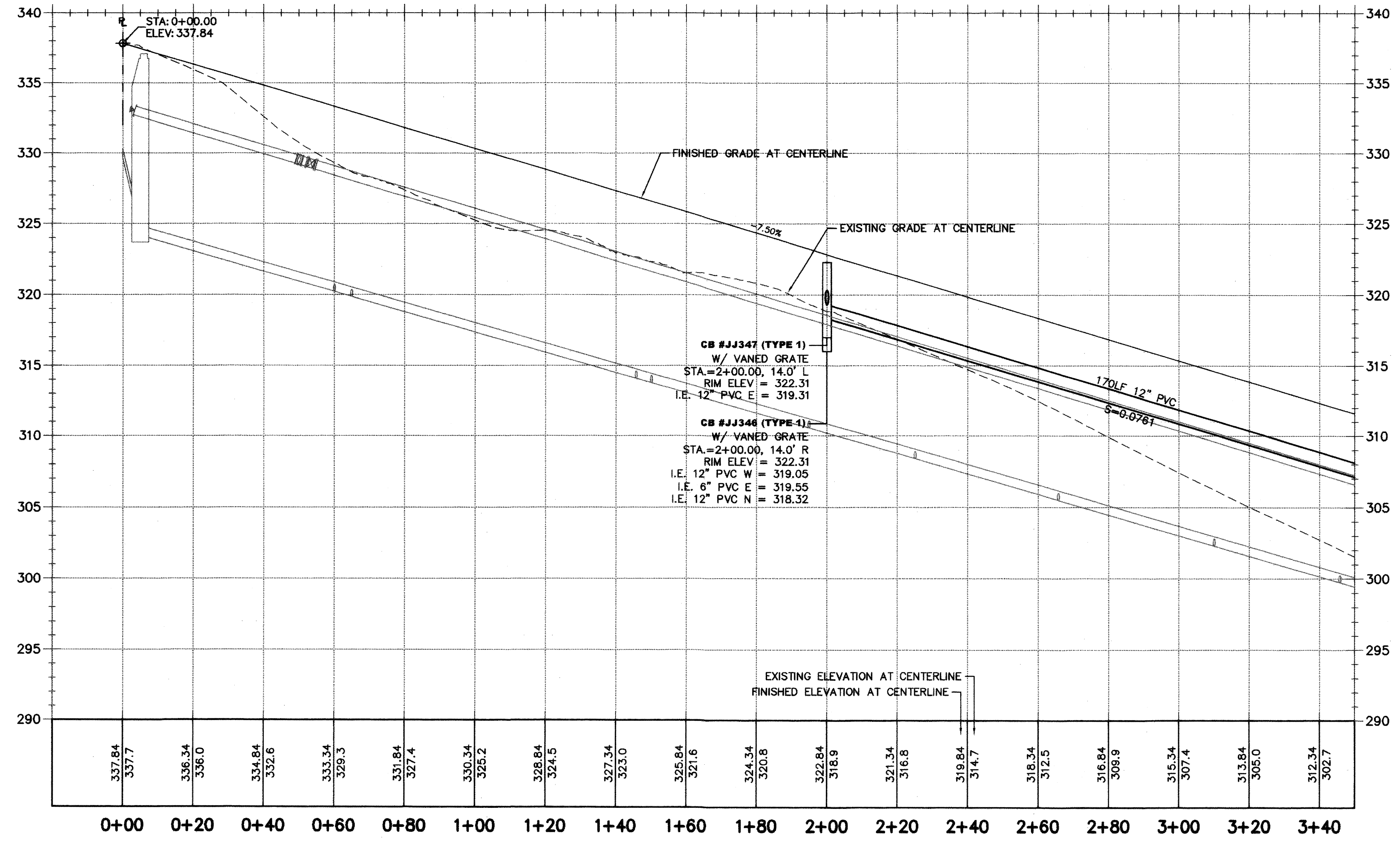


PORTION OF THE SW 1/4, SECTION 32, T. 21 N., R. 5 E., W.M.



SCALE: HORIZONTAL 1" = 20'  
VERTICAL 1" = 5'



- NOTES:
1. ALL PIPE SLOPES NOTED ARE FT/FT.
  2. CATCH BASIN OFFSETS ARE TO FACE OF CURB EXCEPT FOR THOSE STRUCTURES EITHER IN THE DRIVE LANE OR BEHIND CURB. FOR THOSE STRUCTURES, OFFSET IS TO CENTER OF STRUCTURE.
  3. ALL STORM MAINLINE PIPE IN THE PUBLIC RIGHT-OF-WAY SHALL BE PVC (SDR 21) UNLESS OTHERWISE NOTED (MIN COVER = 18 INCHES) TIGHTLINE CONNECTIONS MANIFOLD SYSTEMS BEHIND CURB SHALL BE PVC (SDR 21) UNLESS OTHERWISE NOTED. (SDR 35) MAY BE USED WHERE COVER OVER PIPES IS 3' OR GREATER.

LEGEND

- SANITARY SEWER CLEANOUT
- SANITARY SEWER MANHOLE
- FIRE HYDRANT ASSEMBLY
- CAP, WATER MAIN W/TEMPORARY 2" BLOWOFF ASSEMBLY
- WATER METER
- ELBOW
- CB TYPE I
- CB TYPE I W/SOLID LOCKING LID
- CB TYPE II
- CB TYPE II W/SOLID LOCKING LID
- PROPOSED EASEMENT
- PROPOSED 6" ROOF DRAIN CONNECTION
- EXISTING PAVEMENT
- PROPOSED PAVEMENT
- PROPOSED SIDEWALK
- RETAINING WALL
- BUILDING ENVELOPE
- SIDE SEWERS
- STOP SIGN
- STREET NAME SIGN
- BOLLARD

RECORD DRAWING CERTIFICATION  
THESE DRAWINGS CONFORM TO THE CONTRACTOR'S CONSTRUCTION RECORDS.

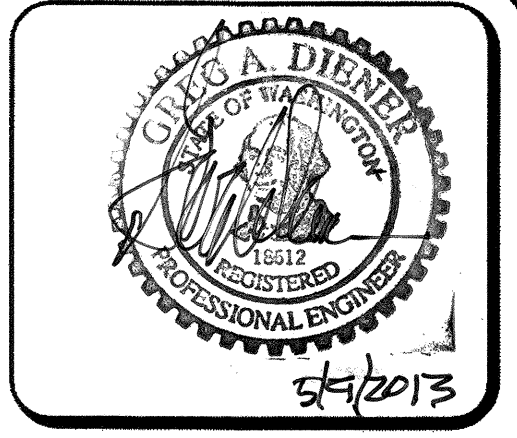
BY: \_\_\_\_\_ DATE \_\_\_\_\_

TITLE/POSITION: \_\_\_\_\_

CONFIRMED BY CITY: \_\_\_\_\_ DATE \_\_\_\_\_

PROJECT REF: FAC07-0016  
H.S. May 10, 2013  
THESE PLANS ARE "APPROVED" FOR CONFORMANCE WITH THE CITY OF AUBURN'S ENGINEERING DIVISION REQUIREMENTS.

APPROVED BY: *Dennis Sille*  
DATE APPROVED: 5/15/13



15445 53RD AVE. S.  
SEATTLE, WA 98188  
PHONE: (206) 431-7970  
FAX: (206) 388-1648  
WEB SITE: PACENG.COM

Pacific Engineering Design, LLC  
Civil Engineering and Planning Consultants

LAKELAND HILLS ESTATES  
CITY OF AUBURN

FOR: DENOVA NORTH-WEST, LLC  
17837 1ST AVE. S. SOUTH PUMPKIN  
NORMANDY PARK, WA 98148  
PHONE: (206) 425-3884  
FAX: (206) 286-8616

PROJECT NO.: 12022  
DRAWN BY: ENM  
ISSUE DATE: 07-17-07  
SHEET REV.: 3-20-2013

ROAD AND STORM PLAN AND PROFILE  
(VICTORIA AVE STA. 0+00-3+50)

05056RD11-C15.DWG  
**C27**  
SHEET 27 OF 55