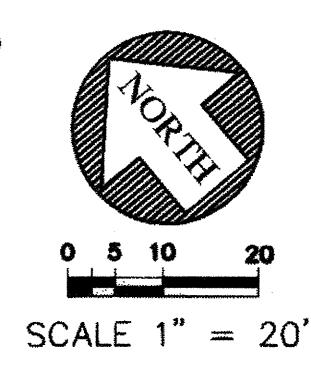
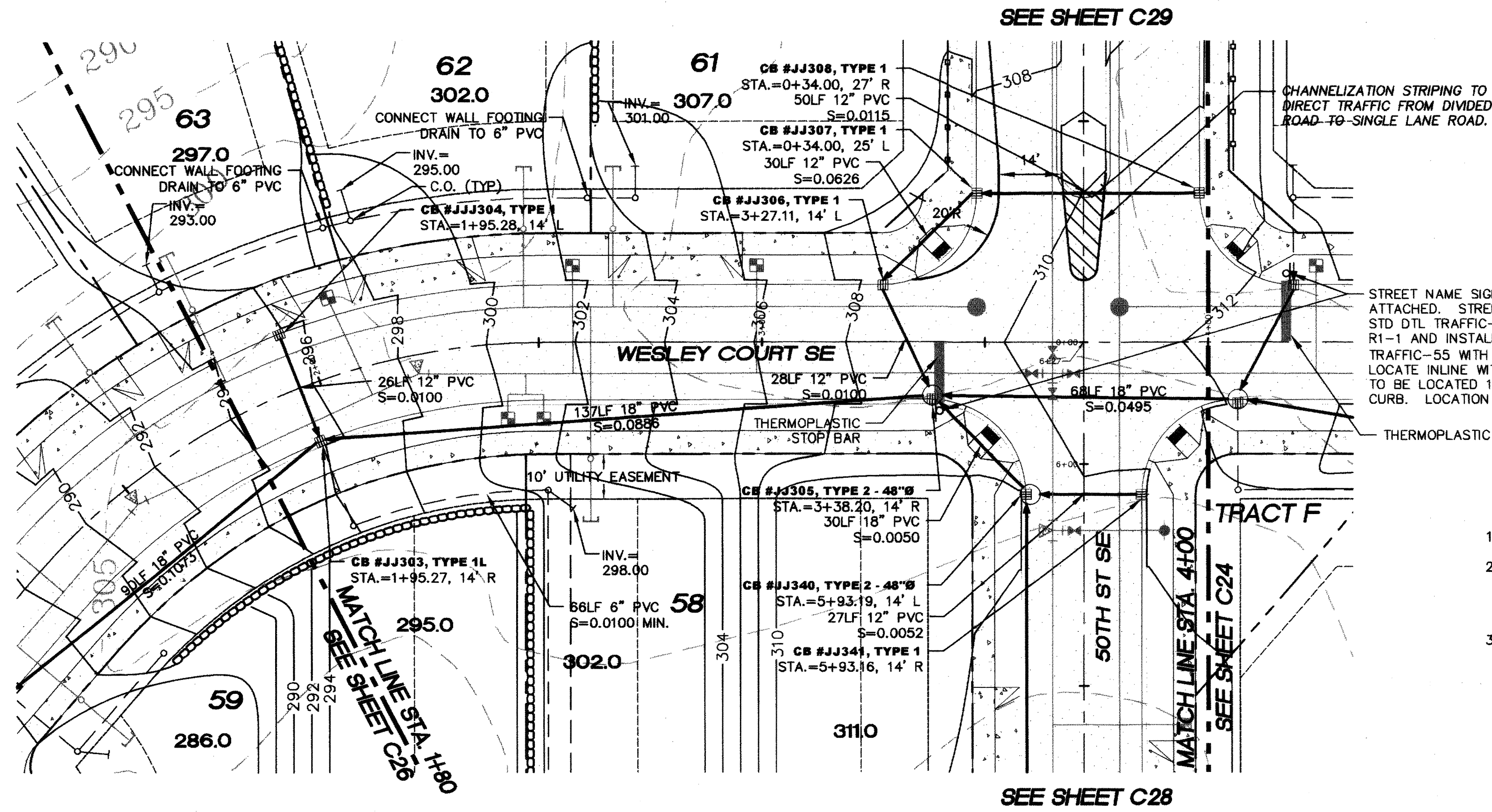


PORTION OF THE SW 1/4, SECTION 32, T. 21 N., R. 5 E., W.M.

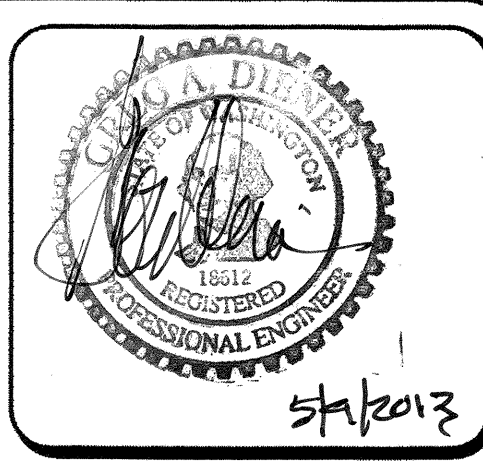
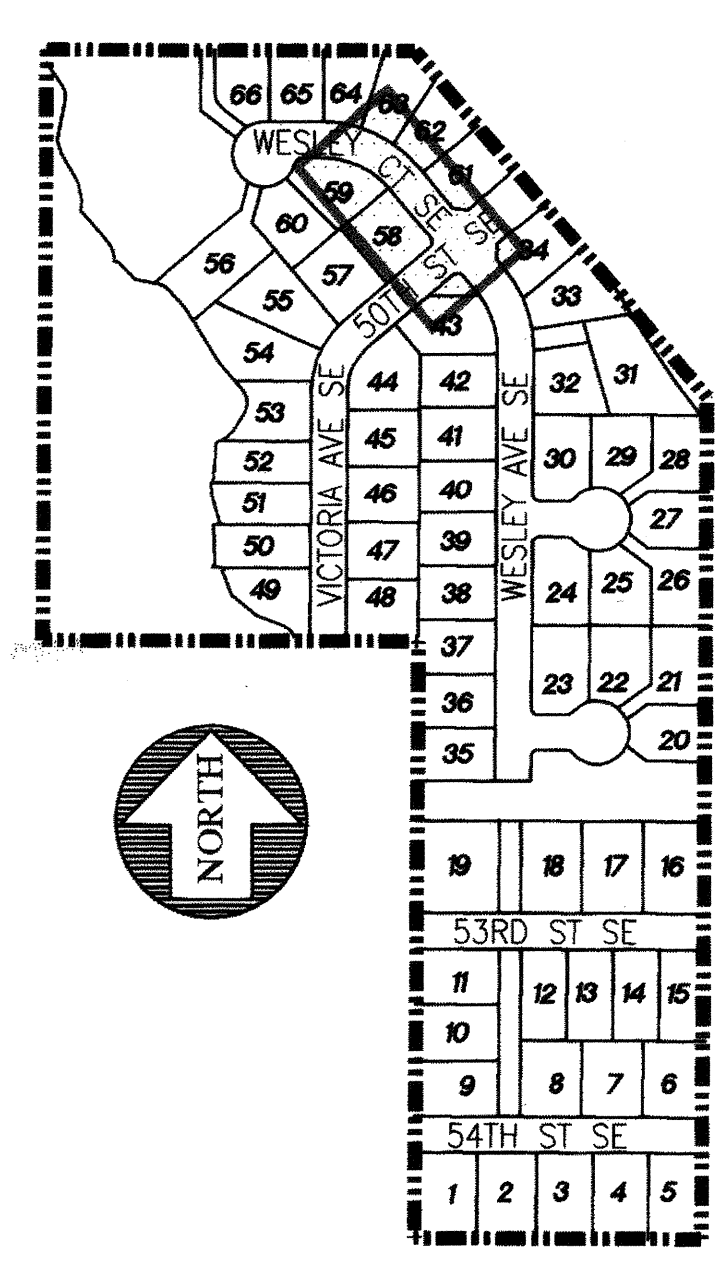


CHANNELIZATION STRIPING TO DIRECT TRAFFIC FROM DIVIDED ROAD TO SINGLE LANE ROAD.

STREET NAME SIGN WITH STOP SIGN ATTACHED. STREET NAME SIGN PER COA STD DTL TRAFFIC-55 & 57. STOP SIGN R1-1 AND INSTALLATION PER COA STD DTL TRAFFIC-55 WITH TELESPAR POLE. (TYP) LOCATE INLINE WITH STOP BAR WITH POST TO BE LOCATED 18 INCHES OFF FACE OF CURB. LOCATION MAY BE FIELD ADJUSTED.

- NOTES:**
1. ALL PIPE SLOPES NOTED ARE FT/FT.
 2. CATCH BASIN OFFSETS ARE TO FACE OF CURB EXCEPT FOR THOSE STRUCTURES EITHER IN THE DRIVE LANE OR BEHIND CURB. FOR THOSE STRUCTURES, OFFSET IS TO CENTER OF STRUCTURE.
 3. ALL STORM MAINLINE PIPE IN THE PUBLIC RIGHT-OF-WAY SHALL BE PVC (SDR 21) UNLESS OTHERWISE NOTED (MIN COVER = 18 INCHES) TIGHTLINE CONNECTIONS MANIFOLD SYSTEMS BEHIND CURB SHALL BE PVC (SDR 21) UNLESS OTHERWISE NOTED. (SDR 35) MAY BE USED WHERE COVER OVER PIPES IS 3' OR GREATER.

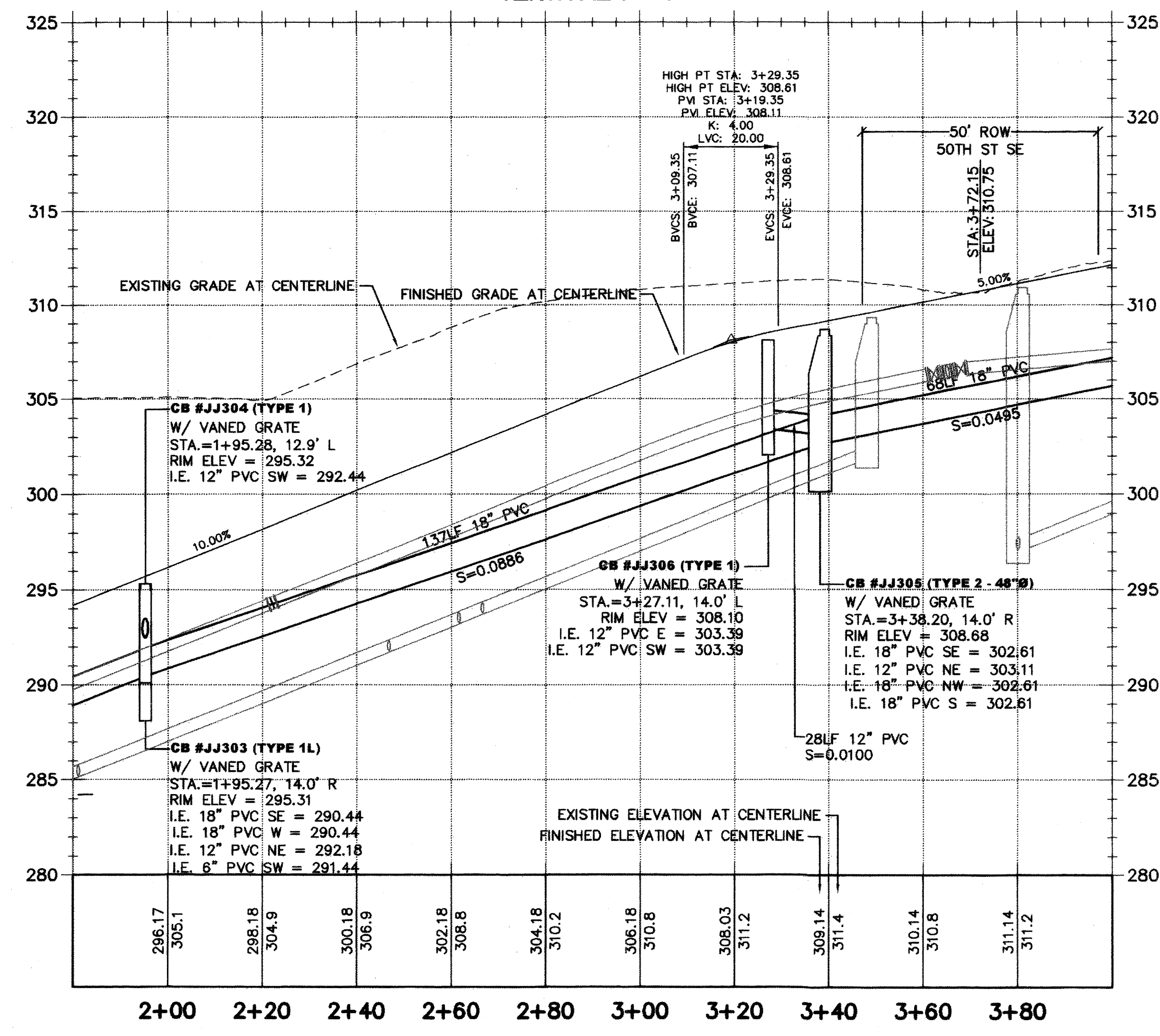
KEYMAP



15445 53RD AVE S
SEATTLE, WA 98188
PHONE: (206) 431-7970
FAX: (206) 388-1648
WEB SITE: PACENG.COM

Pacific Engineering Design, LLC
Civil Engineering and Planning Consultants

SCALE: HORIZONTAL 1" = 20'
VERTICAL 1" = 5'



LEGEND

- SANITARY SEWER CLEANOUT
- SANITARY SEWER MANHOLE
- ⊕ FIRE HYDRANT ASSEMBLY
- ⊕ CAP, WATER MAIN W/TEMPORARY 2" BLOWOFF ASSEMBLY
- ⊕ WATER METER
- ⊕ ELBOW
- ▬ CB TYPE I
- ▬ CB TYPE I W/SOLID LOCKING LID
- ⊕ CB TYPE II
- ⊕ CB TYPE II W/SOLID LOCKING LID
- ▬ PROPOSED EASEMENT
- ▬ PROPOSED 6" ROOF DRAIN CONNECTION
- ▬ EXISTING PAVEMENT
- ▬ PROPOSED PAVEMENT
- ▬ PROPOSED SIDEWALK
- ▬ RETAINING WALL
- ▬ BUILDING ENVELOPE
- ▬ SIDE SEWERS
- ⊕ STOP SIGN
- ▬ STREET NAME SIGN
- ▬ BOLLARD

RECORD DRAWING CERTIFICATION
THESE DRAWINGS CONFORM TO THE CONTRACTOR'S CONSTRUCTION RECORDS.

BY: _____ DATE _____
TITLE/POSITION: _____
CONFIRMED BY CITY: _____ DATE _____

PROJECT REF: FAC07-0016
HS May 10, 2013
THESE PLANS ARE "APPROVED" FOR CONFORMANCE WITH THE CITY OF AUBURN'S ENGINEERING DIVISION REQUIREMENTS.

APPROVED BY: *Dennis Sells*
DATE APPROVED: 5/15/13

LAKELAND HILLS ESTATES
CITY OF AUBURN

FOR:
DENOVA NORTH-WEST, LLC
7703 WEST AVENUE, SUITE 100
NORMANDY PARK, WA 98148
PHONE: (206) 429-3884
FAX: (206) 299-9519

PROJECT NO.: 12022
DRAWN BY: ENM
ISSUE DATE: 07-17-07
SHEET REV.: 3-20-2013

ROAD AND STORM PLAN AND PROFILE
(WESLEY AVE STA. 1+80-4+00)

05056RD09-C13.0.DWG
C25
SHEET 25 OF 55