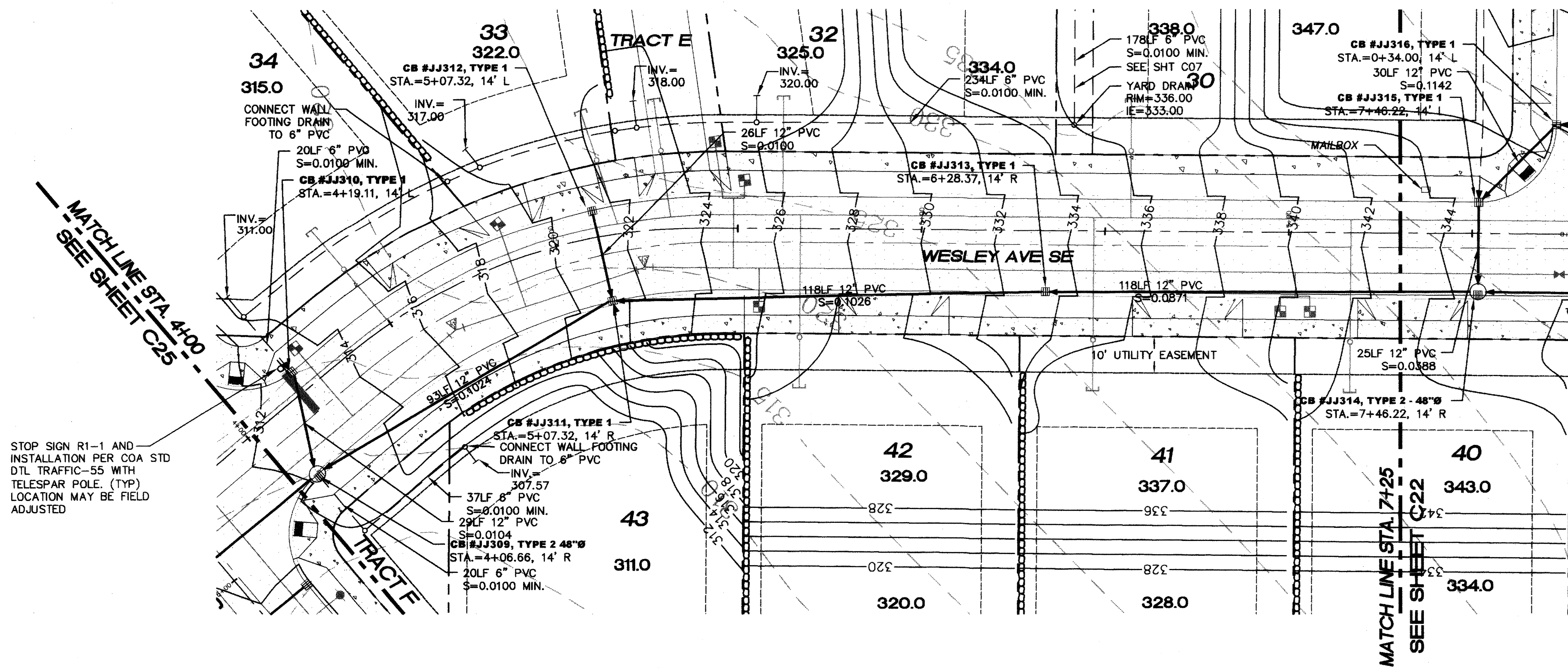
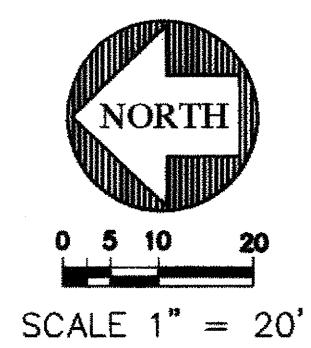


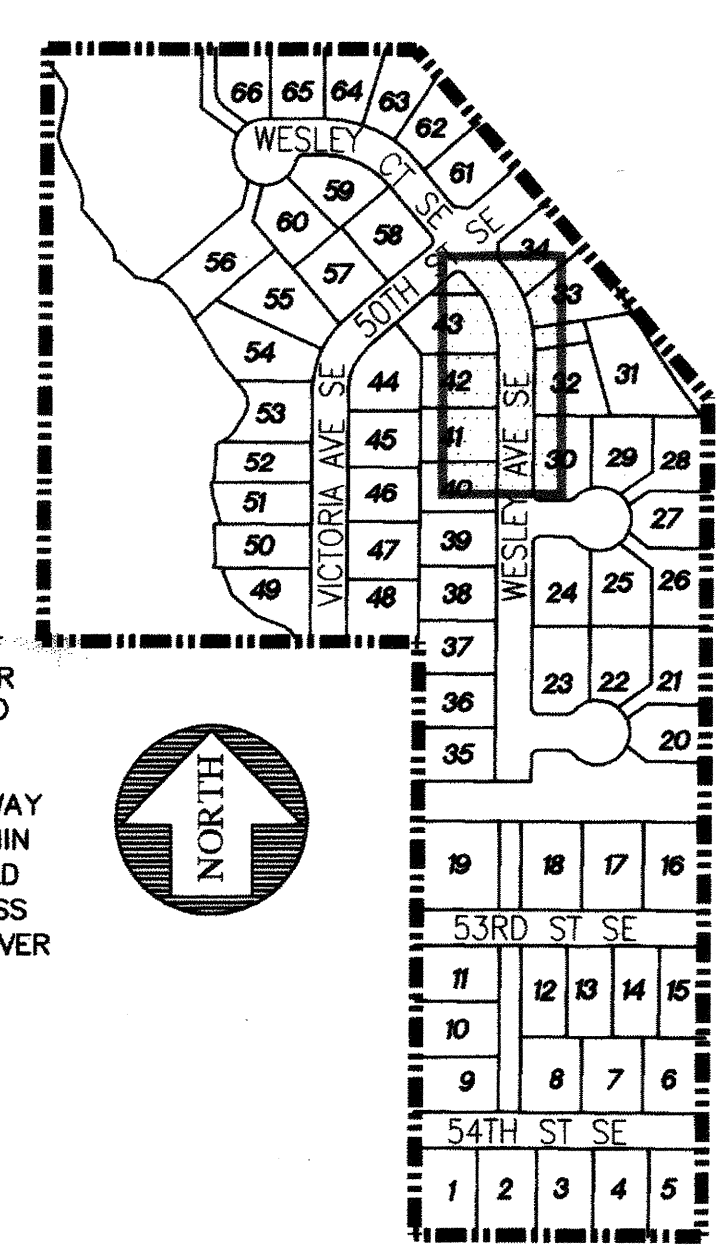
PORTION OF THE SW 1/4, SECTION 32, T. 21 N., R. 5 E., W.M.



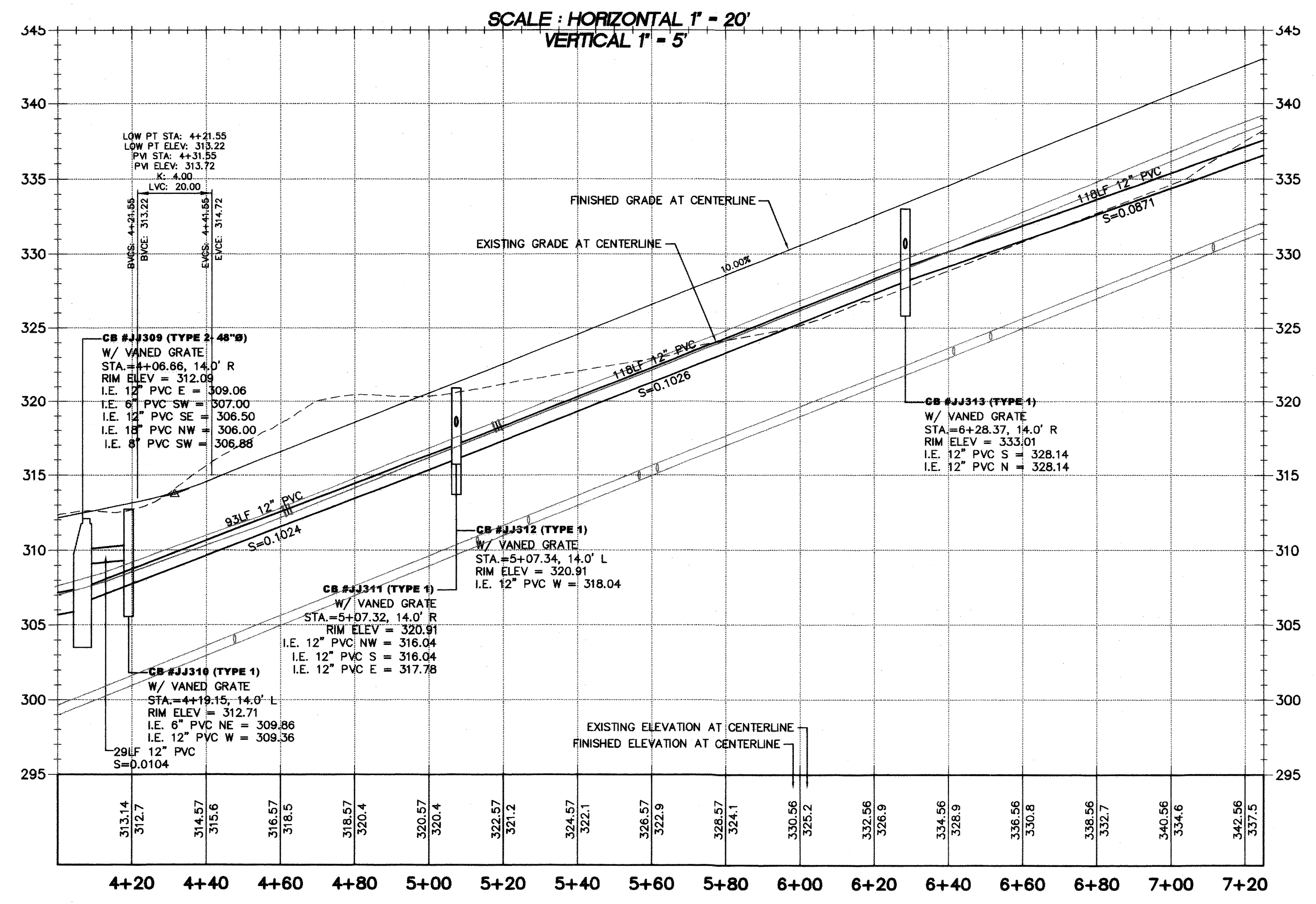
STOP SIGN R1-1 AND INSTALLATION PER COA STD DTL TRAFFIC-55 WITH TELESPEAR POLE. (TYP) LOCATION MAY BE FIELD ADJUSTED



KEYMAP



- NOTES:
- ALL PIPE SLOPES NOTED ARE FT/FT.
 - CATCH BASIN OFFSETS ARE TO FACE OF CURB EXCEPT FOR THOSE STRUCTURES EITHER IN THE DRIVE LANE OR BEHIND CURB. FOR THOSE STRUCTURES, OFFSET IS TO CENTER OF STRUCTURE
 - ALL STORM MAINLINE PIPE IN THE PUBLIC RIGHT-OF-WAY SHALL BE PVC (SDR 21) UNLESS OTHERWISE NOTED (MIN COVER = 18 INCHES) TIGHTLINE CONNECTIONS MANIFOLD SYSTEMS BEHIND CURB SHALL BE PVC (SDR 21) UNLESS OTHERWISE NOTED. (SDR 35) MAY BE USED WHERE COVER OVER PIPES IS 3' OR GREATER.



LEGEND

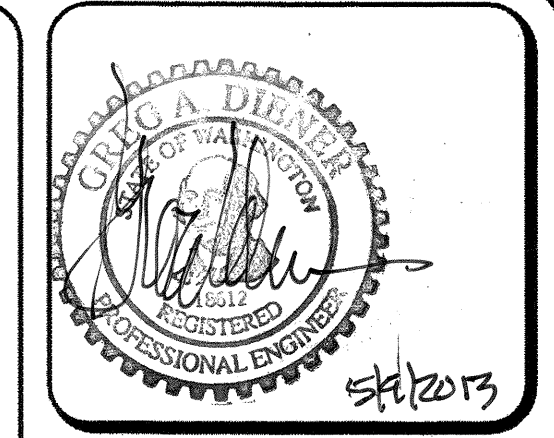
- SANITARY SEWER CLEANOUT
- SANITARY SEWER MANHOLE
- FIRE HYDRANT ASSEMBLY
-
- WATER METER
- ELBOW
- CB TYPE I
- CB TYPE I W/SOLID LOCKING LID
- CB TYPE II
- CB TYPE II W/SOLID LOCKING LID
- PROPOSED EASEMENT
-
- EXISTING PAVEMENT
- PROPOSED PAVEMENT
- PROPOSED SIDEWALK
- RETAINING WALL
- BUILDING ENVELOPE
- SIDE SEWERS
- STOP SIGN
- STREET NAME SIGN
- BOLLARD

RECORD DRAWING CERTIFICATION
THESE DRAWINGS CONFORM TO THE CONTRACTOR'S CONSTRUCTION RECORDS.

BY: _____ DATE _____
TITLE/POSITION: _____
CONFIRMED BY CITY: _____ DATE _____

PROJECT REF: FAC07-0016
45 May 10, 2013
THESE PLANS ARE "APPROVED" FOR CONFORMANCE WITH THE CITY OF AUBURN'S ENGINEERING DIVISION REQUIREMENTS.

APPROVED BY: *Danni Sells*
DATE APPROVED: 5/15/13



15445 53RD AVE S
SEATTLE, WA 98188
PHONE: (206) 431-7970
FAX: (206) 388-1648
WEB SITE: PACENG.COM

Pacific
Engineering
Design, LLC
Civil Engineering and
Planning Consultants

LAKELAND HILLS ESTATES
CITY OF AUBURN

FOR:
DENOVA NORTH-WEST, LLC
1737 WEST AVENUE, SUITE PWB#2
NORMANDY PARK, WA 98148
PHONE: (206) 425-3884
FAX: (206) 299-6519

PROJECT NO.: 12022
DRAWN BY: ENM
ISSUE DATE: 07-17-07
SHEET REV.: 3-20-2013

ROAD AND
STORM PLAN
AND PROFILE
(WESLEY AVE
STA. 4+00-7+25)

05056RD08-C12.DWG
C24
SHEET 24 OF 55