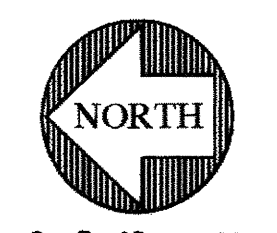
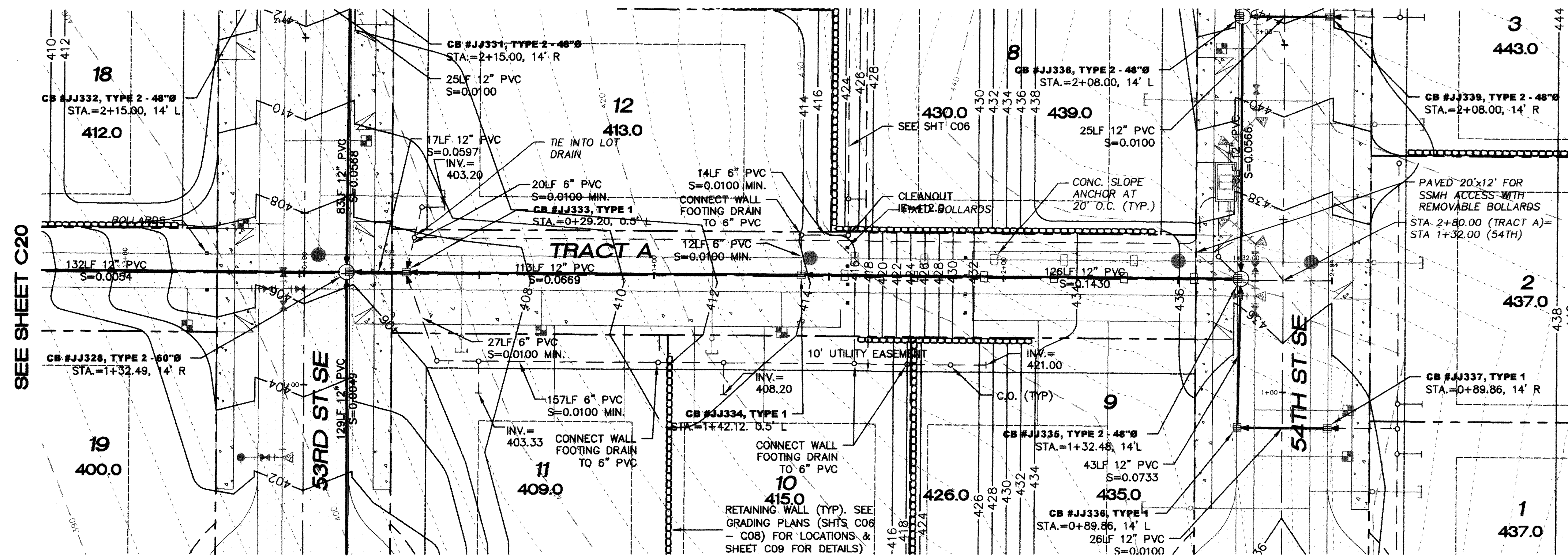
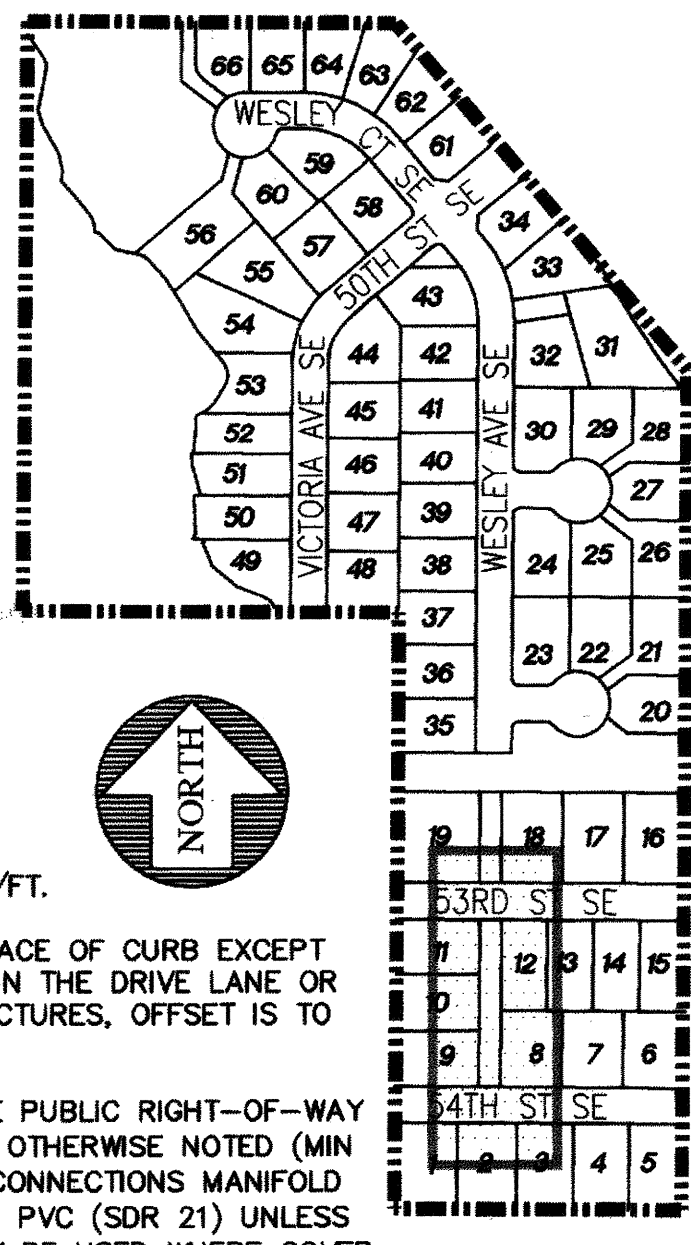


PORTION OF THE SW 1/4, SECTION 32, T. 21 N., R. 5 E., W.M.



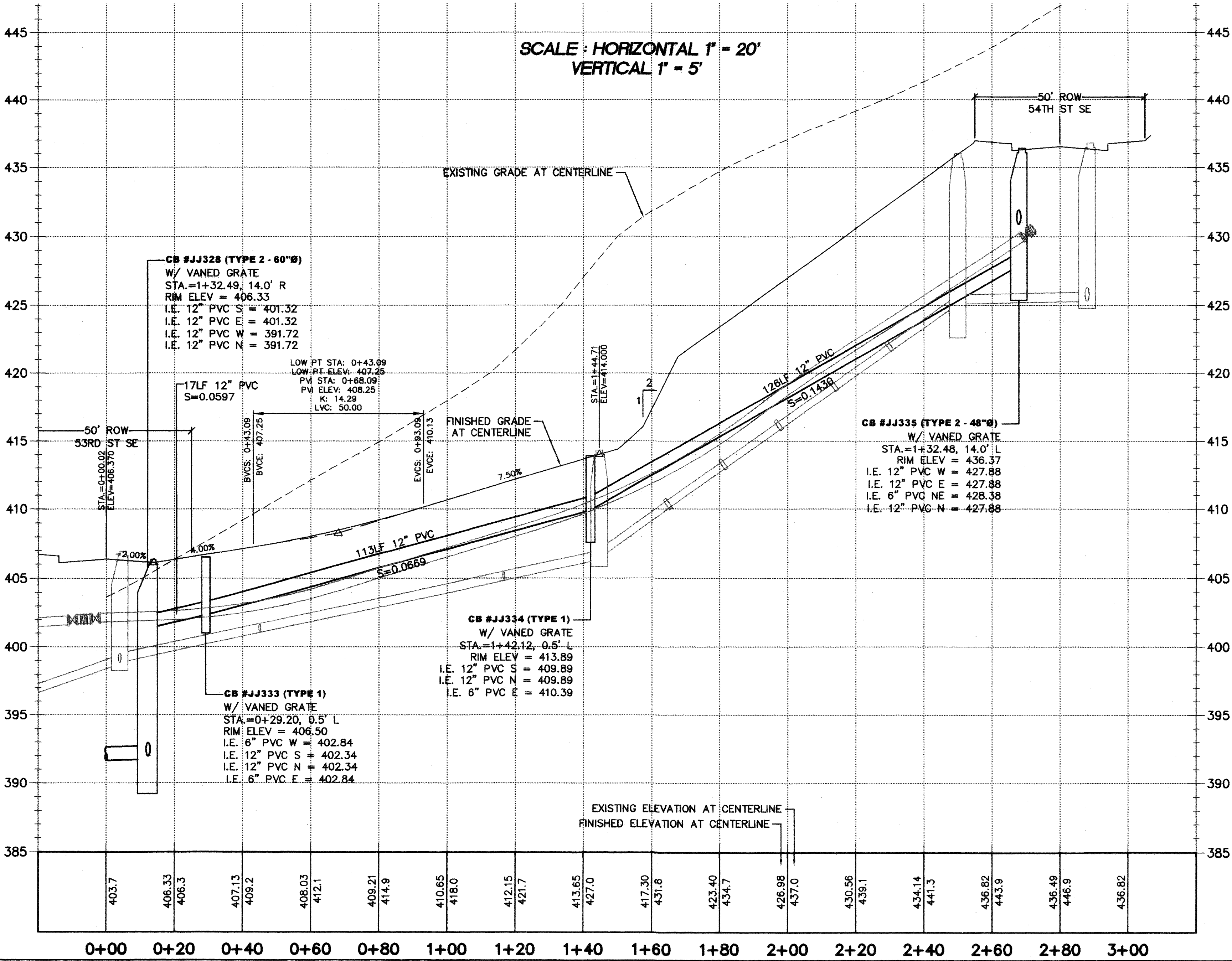
SCALE 1" = 20'

KEYMAP



NOTES:

1. ALL PIPE SLOPES NOTED ARE FT/FT.
2. CATCH BASIN OFFSETS ARE TO FACE OF CURB EXCEPT FOR THOSE STRUCTURES EITHER IN THE DRIVE LANE OR BEHIND CURB. FOR THOSE STRUCTURES, OFFSET IS TO CENTER OF STRUCTURE
3. ALL STORM MAINLINE PIPE IN THE PUBLIC RIGHT-OF-WAY SHALL BE PVC (SDR 21) UNLESS OTHERWISE NOTED (MIN COVER = 18 INCHES) TIGHTLINE CONNECTIONS MANIFOLD SYSTEMS BEHIND CURB SHALL BE PVC (SDR 21) UNLESS OTHERWISE NOTED. (SDR 35) MAY BE USED WHERE COVER OVER PIPES IS 3' OR GREATER.



LEGEND

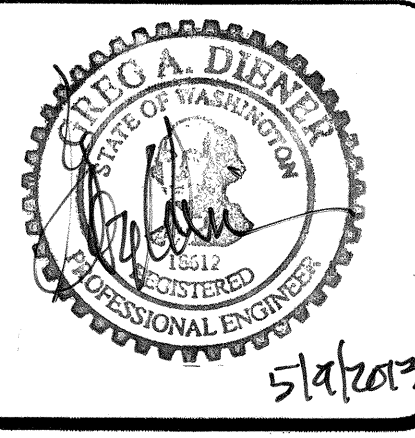
- SANITARY SEWER CLEANOUT
- SANITARY SEWER MANHOLE
- FIRE HYDRANT ASSEMBLY
- 
- 
- 
- 
- 
- 
- 
- 
- 
- 
- 
- 
- 
- 
- 
- 
- 
- 

RECORD DRAWING CERTIFICATION  
 THESE DRAWINGS CONFORM TO THE CONTRACTOR'S  
 CONSTRUCTION RECORDS.

BY: \_\_\_\_\_ DATE \_\_\_\_\_  
 TITLE/POSITION: \_\_\_\_\_  
 CONFIRMED BY CITY: \_\_\_\_\_ DATE \_\_\_\_\_

PROJECT REF: FAC07-0016  
 H5 May 10, 2013  
 THESE PLANS ARE "APPROVED" FOR CONFORMANCE WITH  
 THE CITY OF AUBURN'S ENGINEERING DIVISION  
 REQUIREMENTS.

APPROVED BY: *Dennis Solle*  
 DATE APPROVED: 5/15/13



15445 53RD AVE. S.  
 SEATTLE, WA 98188  
 PHONE: (206) 431-7970  
 FAX: (206) 388-1648  
 WEB SITE: PACENG.COM

Pacific  
 Engineering  
 Design, LLC  
 Civil Engineering and  
 Planning Consultants

LAKELAND HILLS ESTATES  
 CITY OF AUBURN

FOR:  
 DENOVA NORTH-WEST, LLC  
 C/O MILLER BUILDERS  
 17857 1ST AVENUE SOUTH, PMB#2  
 PHOENIX, AZ 85048  
 PHONE: (206) 426-3884  
 FAX: (206) 299-9519

PROJECT NO.: 12022  
 DRAWN BY: ENM  
 ISSUE DATE: 07-17-07  
 SHEET REV.: 3-20-2013

ROAD AND STORM  
 PLAN AND PROFILE  
 (TRACT A)

05056RD03-C07.DWG  
**C19**  
 SHEET 19 OF 55