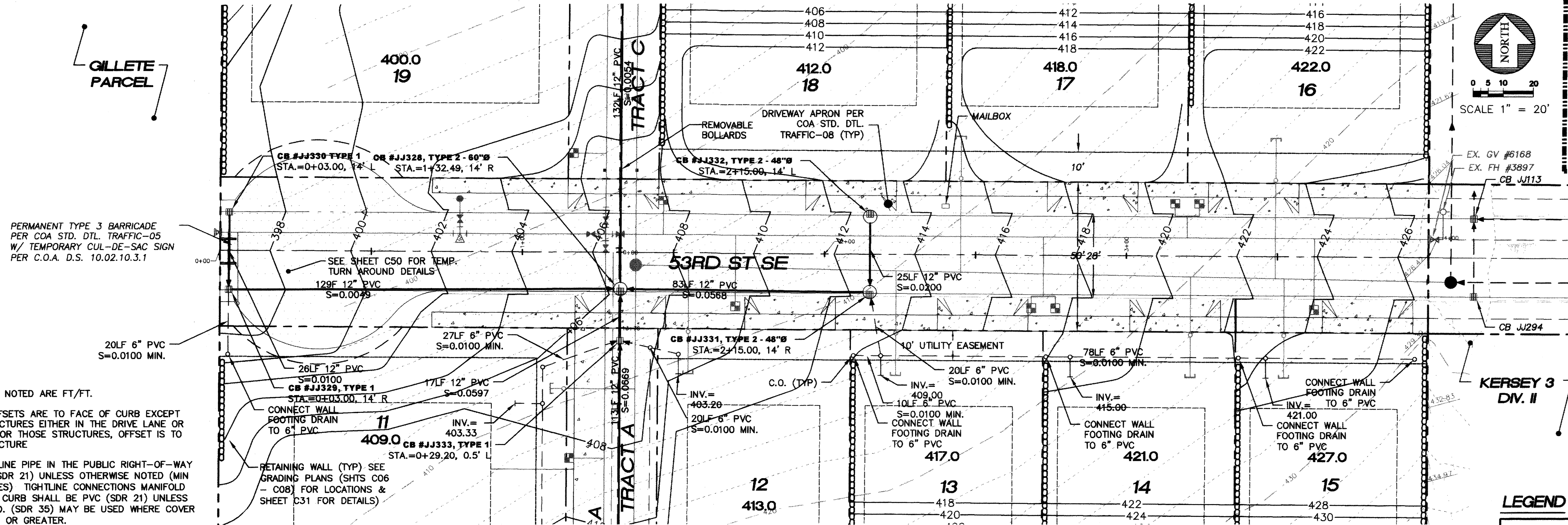
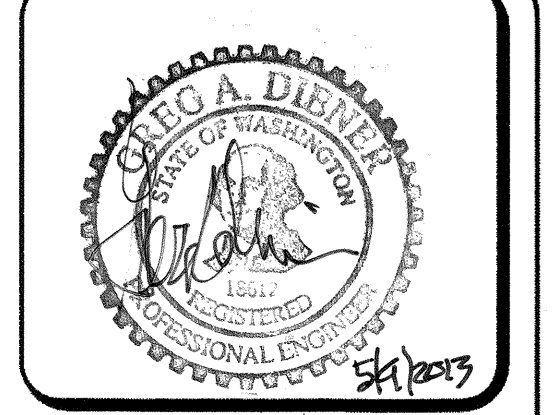
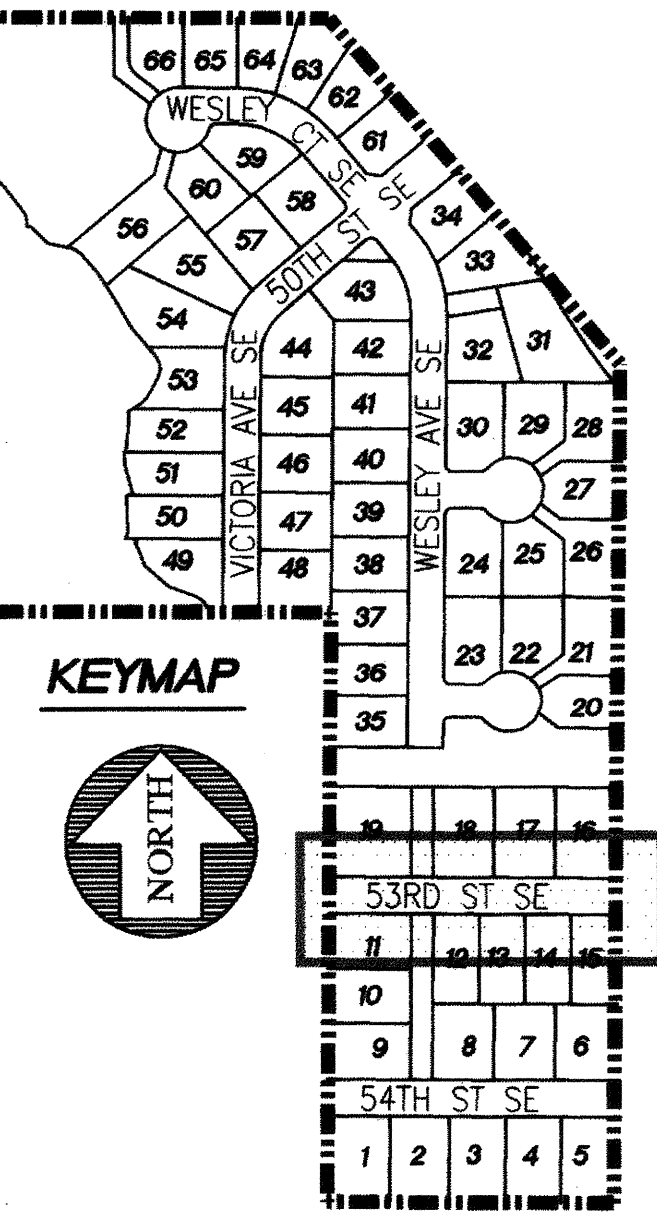
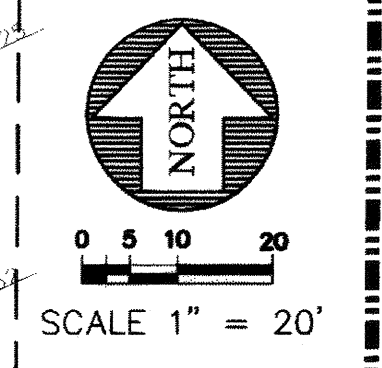


SEE SHEET C20 PORTION OF THE SW 1/4, SECTION 32, T. 21 N., R. 5 E., W.M.



PERMANENT TYPE 3 BARRICADE PER COA STD. DTL. TRAFFIC-05 W/ TEMPORARY CUL-DE-SAC SIGN PER C.O.A. D.S. 10.02.10.3.1

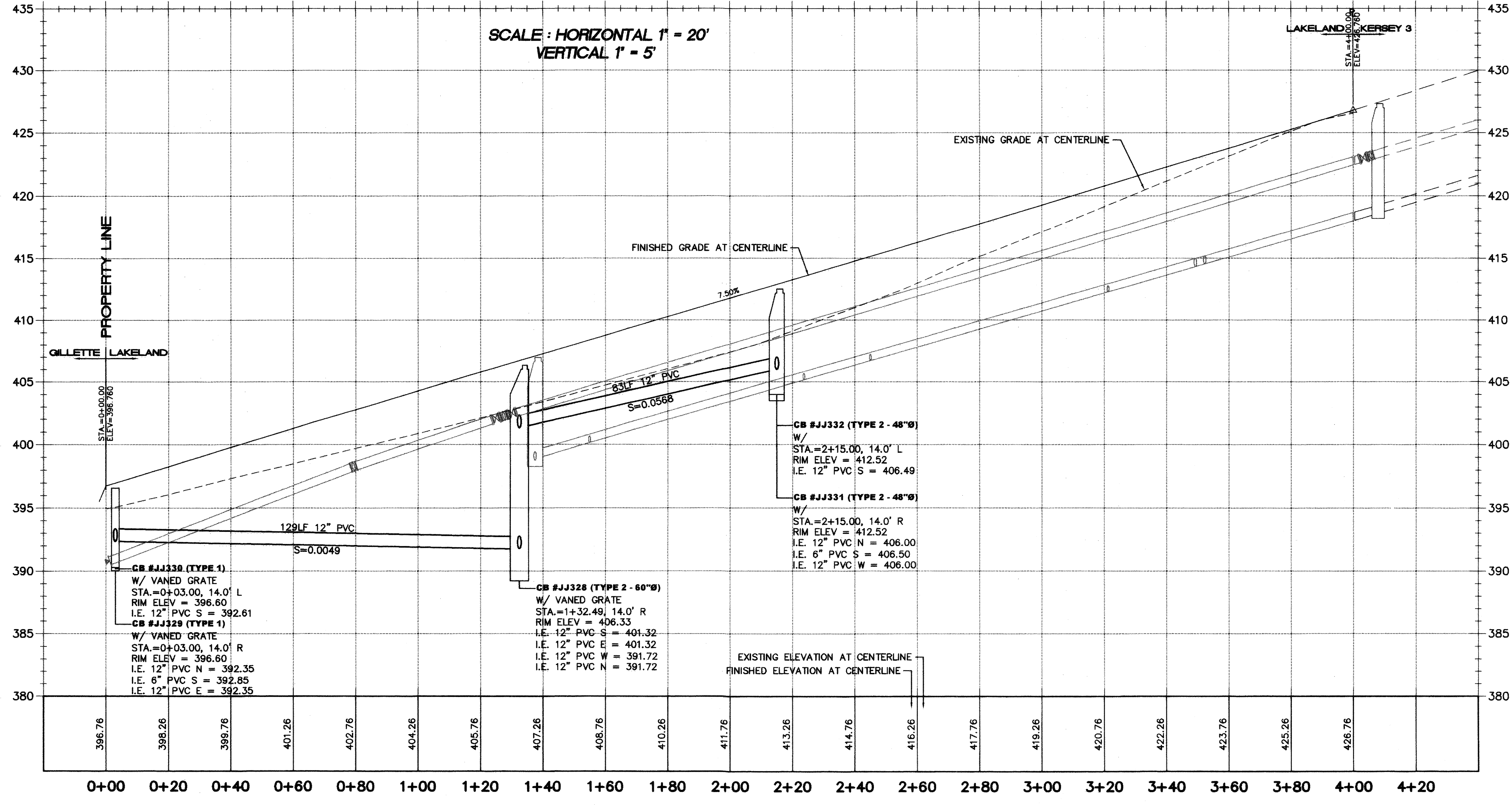
- NOTES:**
1. ALL PIPE SLOPES NOTED ARE FT./FT.
  2. CATCH BASIN OFFSETS ARE TO FACE OF CURB EXCEPT FOR THOSE STRUCTURES EITHER IN THE DRIVE LANE OR BEHIND CURB. FOR THOSE STRUCTURES, OFFSET IS TO CENTER OF STRUCTURE
  3. ALL STORM MAINLINE PIPE IN THE PUBLIC RIGHT-OF-WAY SHALL BE PVC (SDR 21) UNLESS OTHERWISE NOTED (MIN COVER = 18 INCHES) TIGHTLINE CONNECTIONS MANIFOLD SYSTEMS BEHIND CURB SHALL BE PVC (SDR 21) UNLESS OTHERWISE NOTED. (SDR 35) MAY BE USED WHERE COVER OVER PIPES IS 3' OR GREATER.



15445 53RD AVE. S.  
SEATTLE, WA 98188  
PHONE: (206) 431-7970  
FAX: (206) 388-1648  
WEB SITE: PACENG.COM

**Pacific Engineering Design, LLC**  
Civil Engineering and Planning Consultants

SEE SHEET C19



**LEGEND**

- SANITARY SEWER CLEANOUT
- SANITARY SEWER MANHOLE
- ⊕ FIRE HYDRANT ASSEMBLY
- ⊕ CAP, WATER MAIN W/TEMPORARY 2" BLOWOFF ASSEMBLY
- ⊕ WATER METER
- ⊕ ELBOW
- ⊕ CB TYPE I
- ⊕ CB TYPE I W/SOLID LOCKING LID
- ⊕ CB TYPE II
- ⊕ CB TYPE II W/SOLID LOCKING LID
- PROPOSED EASEMENT
- PROPOSED 6" ROOF DRAIN CONNECTION
- EXISTING PAVEMENT
- PROPOSED PAVEMENT
- PROPOSED SIDEWALK
- RETAINING WALL
- BUILDING ENVELOPE
- SIDE SEWERS
- ⊕ STOP SIGN
- ⊕ STREET NAME SIGN
- ⊕ BOLLARD

RECORD DRAWING CERTIFICATION  
THESE DRAWINGS CONFORM TO THE CONTRACTOR'S CONSTRUCTION RECORDS.

BY: \_\_\_\_\_ DATE \_\_\_\_\_  
TITLE/POSITION: \_\_\_\_\_  
CONFIRMED BY CITY: \_\_\_\_\_ DATE \_\_\_\_\_

PROJECT REF: FAC07-0016  
HS May 10, 2013  
THESE PLANS ARE "APPROVED" FOR CONFORMANCE WITH THE CITY OF AUBURN'S ENGINEERING DIVISION REQUIREMENTS.

APPROVED BY: *Dennis Selle*  
DATE APPROVED: 5/15/13

LAKELAND HILLS ESTATES  
CITY OF AUBURN

FOR: DENOVA NORTH-WEST, LLC.  
C/O MILLENNIAL BUILDERS  
1887 18TH AVENUE SOUTH, PMB92  
AUBURN, WA 98001  
PHONE: (206) 423-3884  
FAX: (206) 299-9519

PROJECT NO.: 12022  
DRAWN BY: ENM  
ISSUE DATE: 07-17-07  
SHEET REV.: 3-20-2013

**ROAD AND STORM PLAN AND PROFILE (53RD ST. SE)**

05056RD02-C06.DWG  
**C18**  
SHEET 18 OF 55