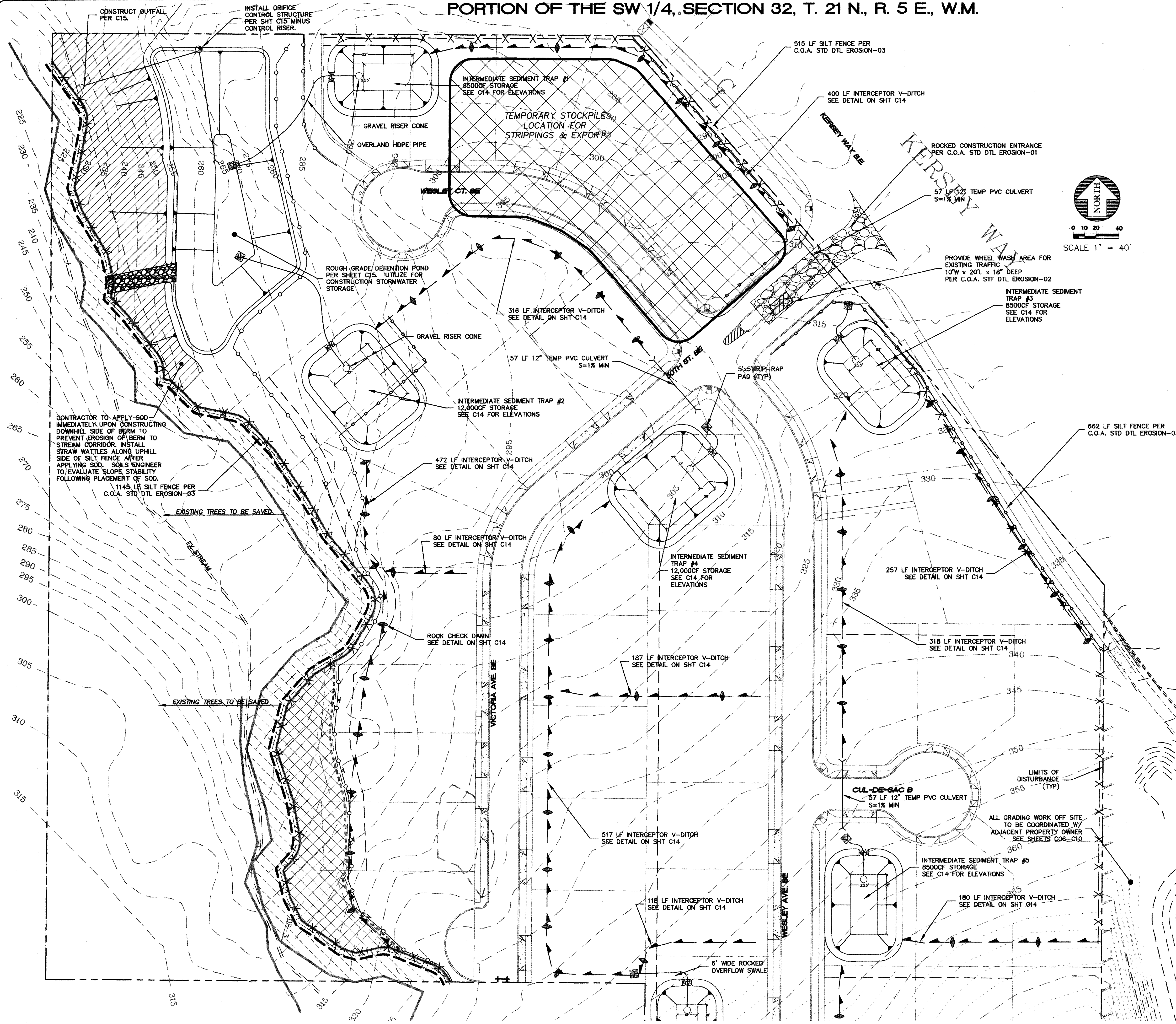
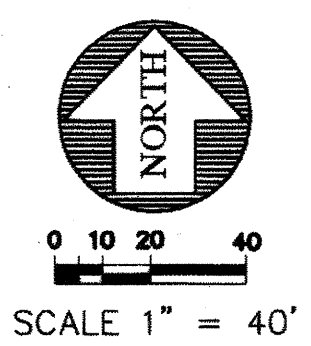
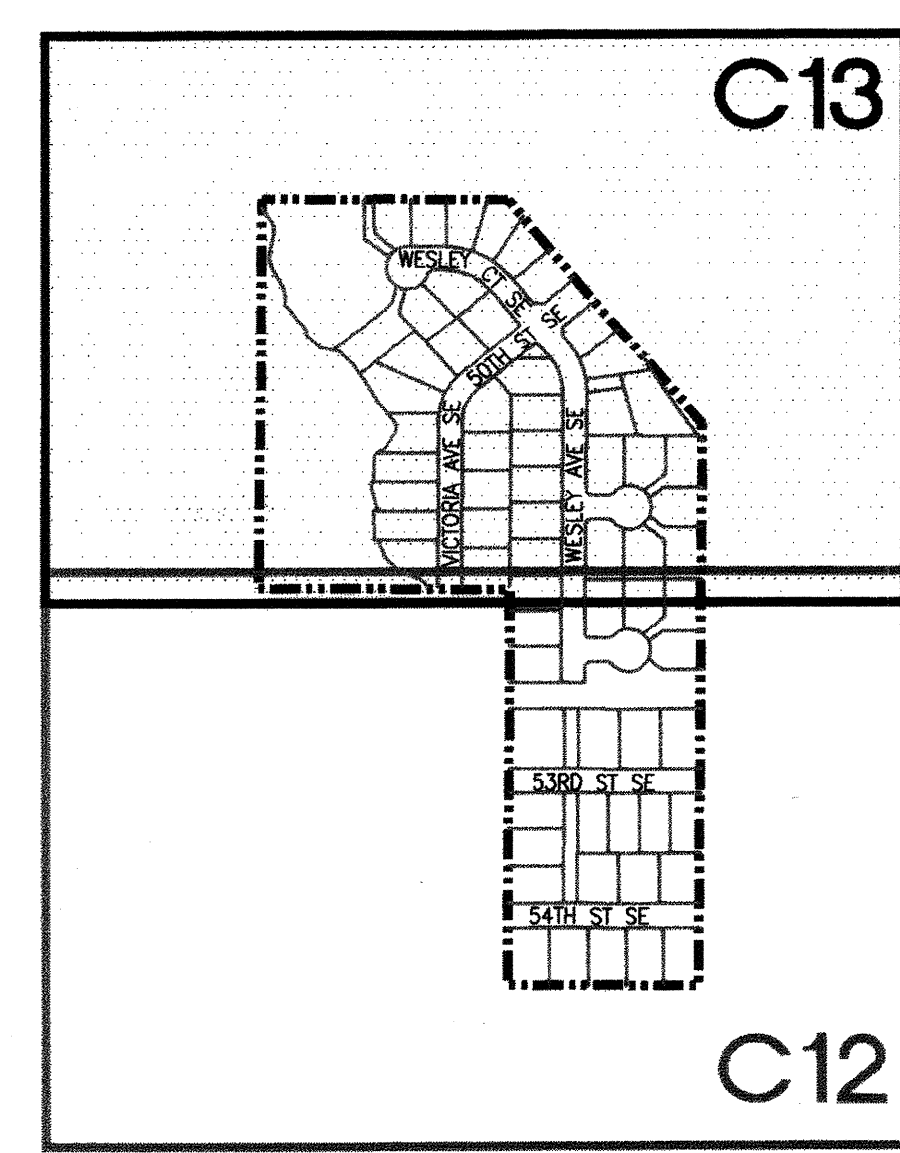


PORTION OF THE SW 1/4, SECTION 32, T. 21 N., R. 5 E., W.M.



KEYMAP



RECORD DRAWING CERTIFICATION
 THESE DRAWINGS CONFORM TO THE CONTRACTOR'S
 CONSTRUCTION RECORDS.

BY: _____ DATE: _____

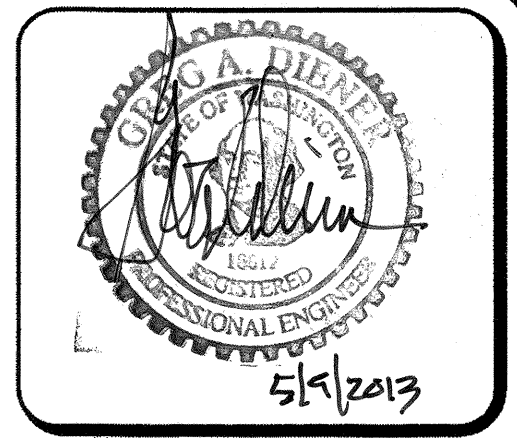
TITLE/POSITION: _____

CONFIRMED BY CITY: _____ DATE: _____

PROJECT REF: FAC07-0016
 H5 May 10, 2013
 THESE PLANS ARE "APPROVED" FOR CONFORMANCE WITH
 THE CITY OF AUBURN'S ENGINEERING DIVISION
 REQUIREMENTS.

APPROVED BY: *Dennis Sella*

DATE APPROVED: *5/15/13*



15445 53RD AVE. S.
 SEATTLE, WA 98188
 PHONE: (206) 431-7970
 FAX: (206) 388-1648
 WEB SITE: PACENG.COM

**Pacific
 Engineering
 Design, LLC**

Civil Engineering and
 Planning Consultants

LAKELAND HILLS ESTATES

CITY OF AUBURN

FOR:
 DENOVA NORTHWEST, LLC
 C/O MILLERIAL BUILDERS
 18300 15TH AVE NE, SUITE 100
 NEWTON, WA 98424
 PHONE: (206) 423-3684
 FAX: (206) 299-9519

PROJECT NO.: 12022
 DRAWN BY: ENM
 ISSUE DATE: 07-17-07
 SHEET REV.: 3-20-2013

**TEMPORARY
 EROSION AND
 SEDIMENT
 CONTROL PLAN**

05056TE02-C06.DWG

C13

SHEET 13 OF 55