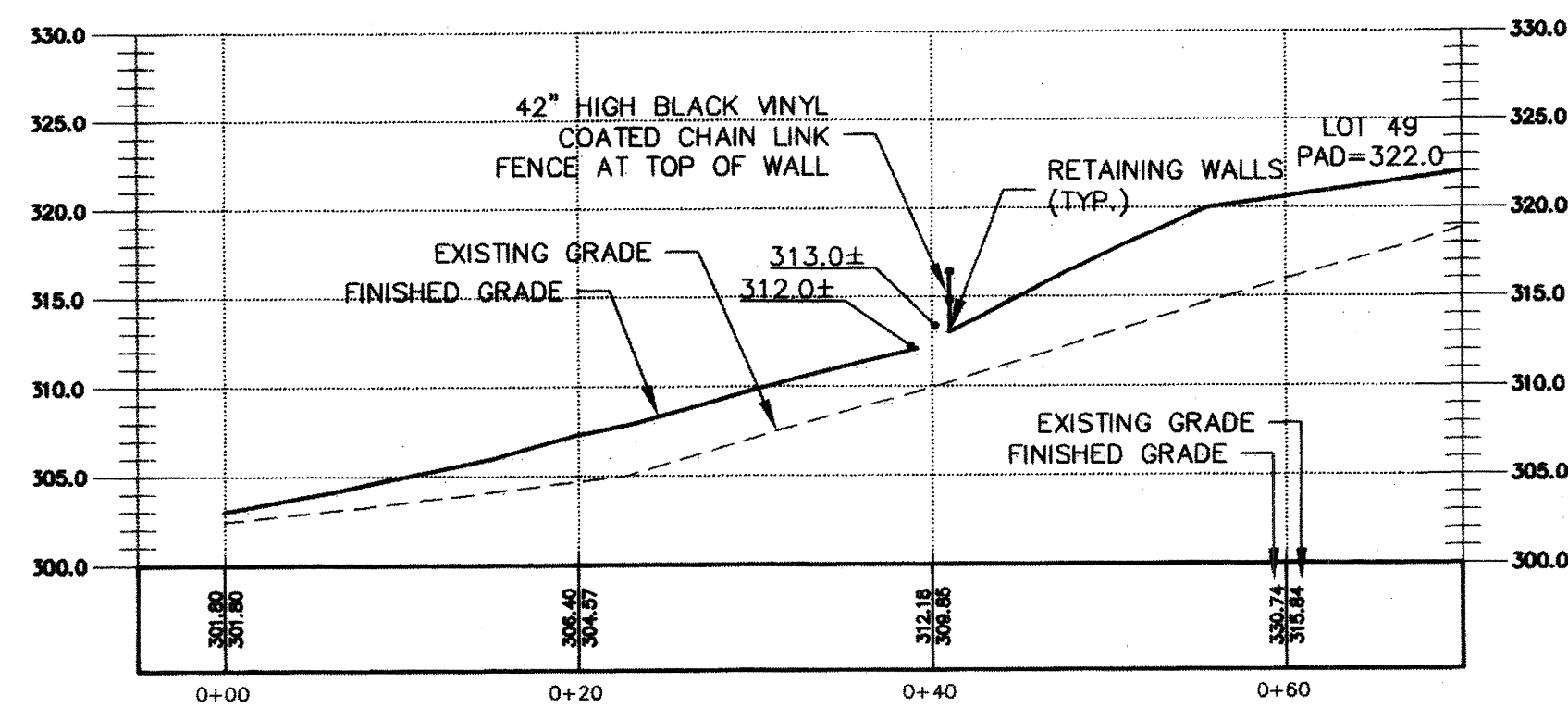
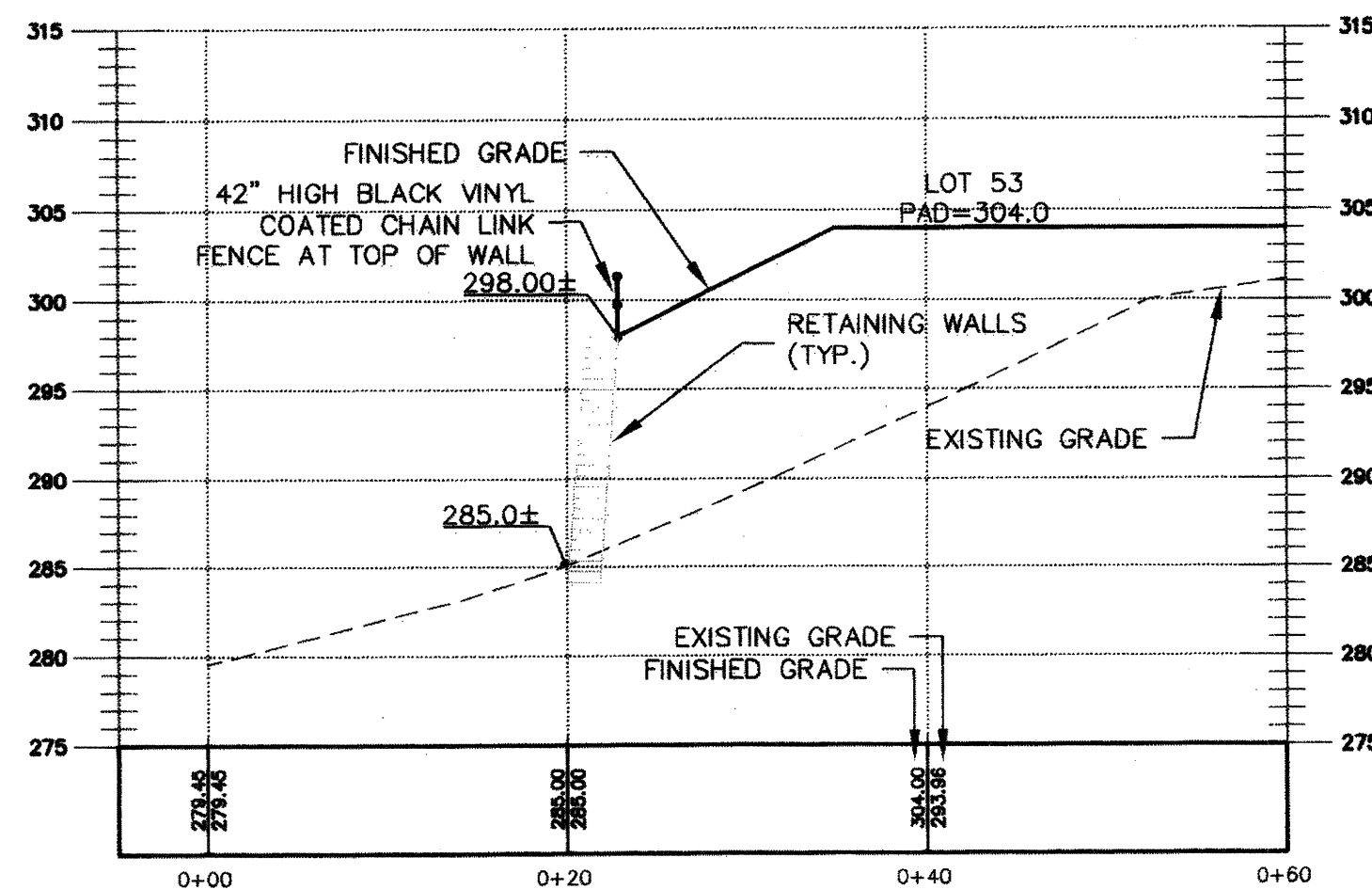


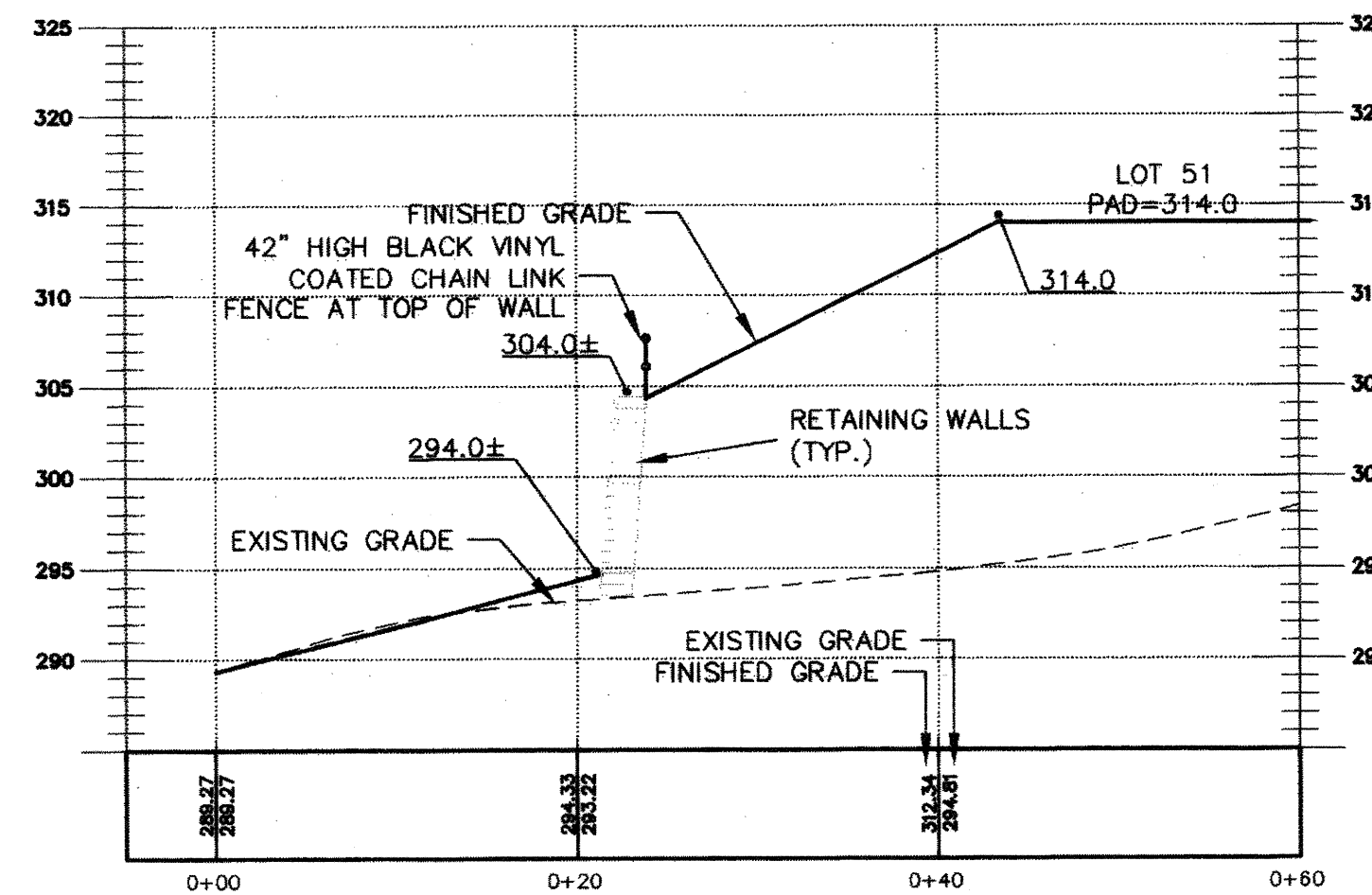
PORTION OF THE SW 1/4, SECTION 32, T. 21 N., R. 5 E., W.M.



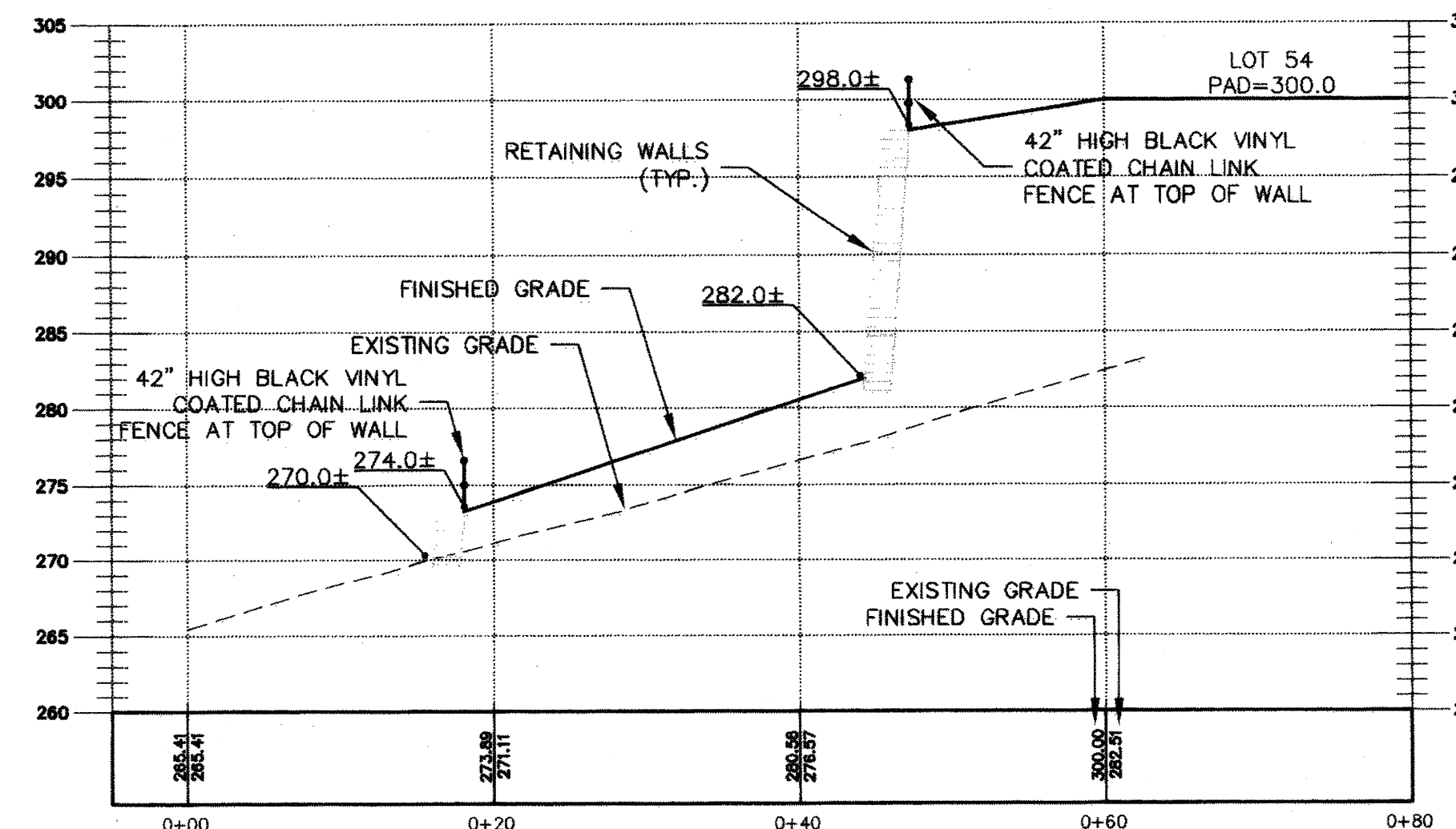
SECTION C-C (SEE SHEET C07)
SCALE: 1" = 10'



SECTION E-E (SEE SHEET C08)
SCALE: 1" = 10'



SECTION D-D (SEE SHEET C07)
SCALE: 1" = 10'



SECTION F-F (SEE SHEET C08)
SCALE: 1" = 10'

RECORD DRAWING CERTIFICATION
THESE DRAWINGS CONFORM TO THE CONTRACTOR'S
CONSTRUCTION RECORDS.

BY: _____ DATE _____

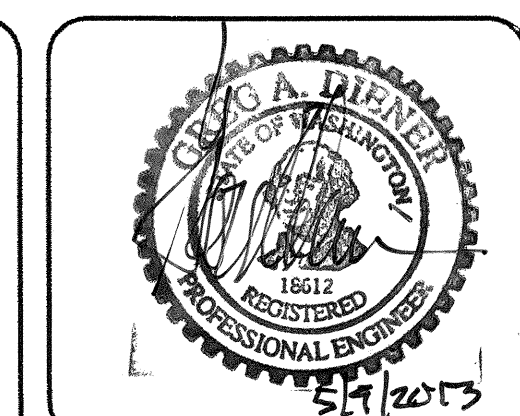
TITLE/POSITION: _____

CONFIRMED BY CITY: _____ DATE _____

PROJECT REF: FAC07-0016
4/5 May 10, 2013
THESE PLANS ARE "APPROVED" FOR CONFORMANCE WITH
THE CITY OF AUBURN'S ENGINEERING DIVISION
REQUIREMENTS.

APPROVED BY: *Dennis Salt*

DATE APPROVED: 5/15/13



15445 53RD AVE. S.
SEATTLE, WA 98188
PHONE: (206) 431-7970
FAX: (206) 388-1648
WEB SITE: PACENG.COM

Pacific Engineering Design, LLC
Civil Engineering and Planning Consultants

LAKELAND HILLS ESTATES
CITY OF AUBURN

FOR:
DENOVA NORTHWEST, LLC.
C/O MILLER BUILDERS
1787 183RD AVENUE S.W. PMB#2
AUBURN, WA 98004
PHONE: (206) 425-3864
FAX: (206) 298-9519

PROJECT NO.: 12022
DRAWN BY: ENM
ISSUE DATE: 07-17-07
SHEET REV.:

GRADING SECTIONS

05056GR01-005-C08.DWG
C10
SHEET 10 OF 55