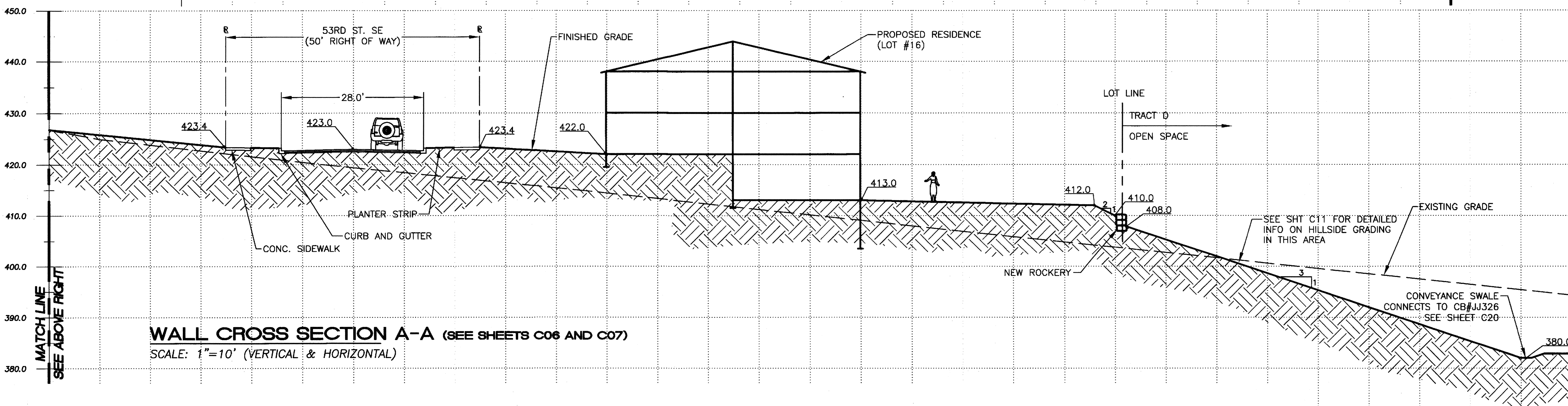
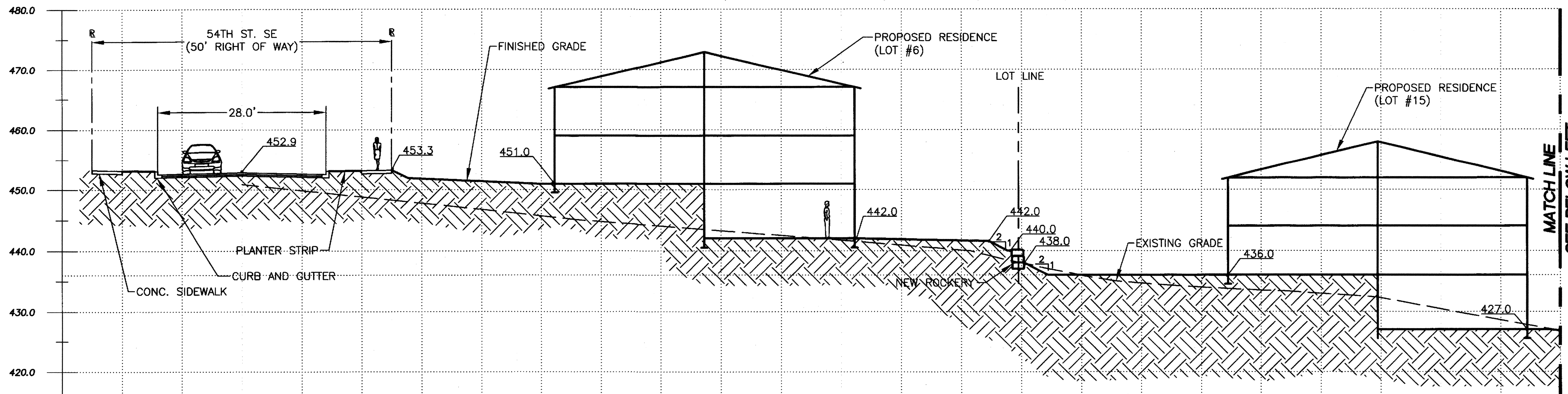
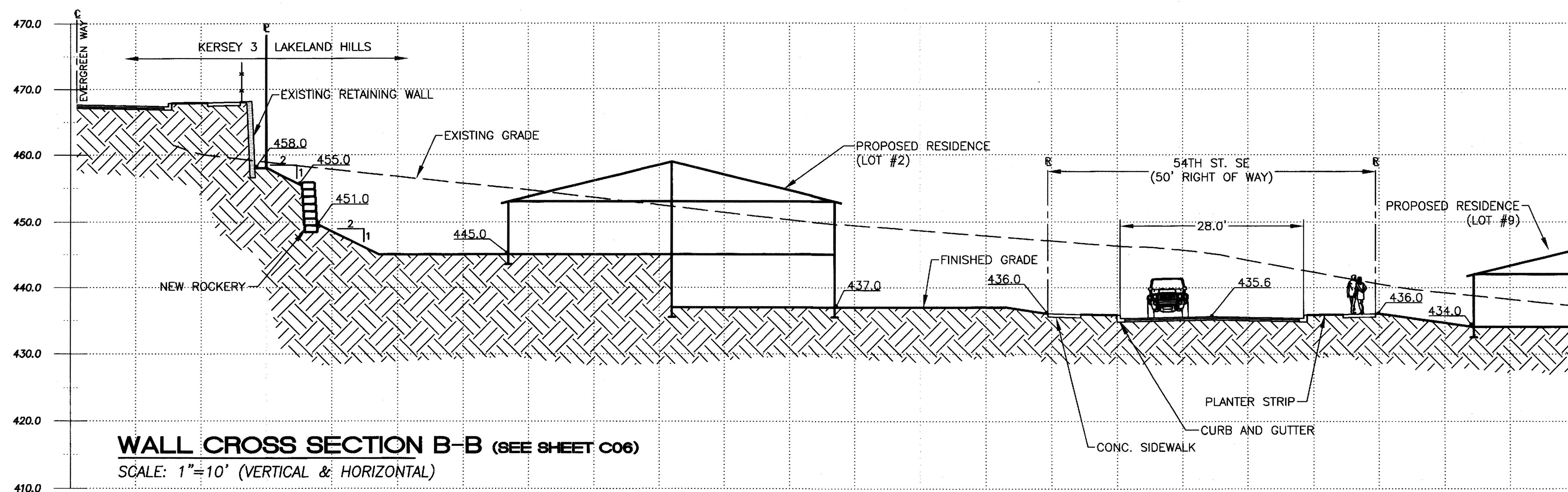


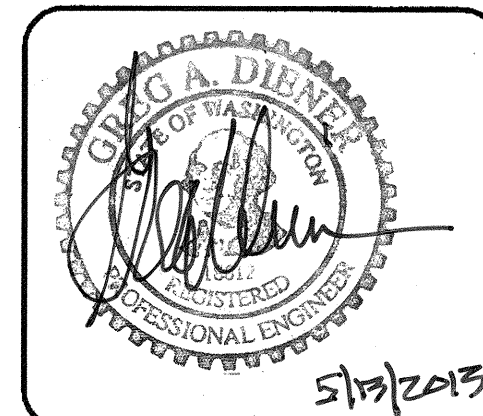
PORTION OF THE SW 1/4, SECTION 32, T. 21 N., R. 5 E., W.M.



WALL CROSS SECTION A-A (SEE SHEETS C06 AND C07)
SCALE: 1"=10' (VERTICAL & HORIZONTAL)



WALL CROSS SECTION B-B (SEE SHEET C06)
SCALE: 1"=10' (VERTICAL & HORIZONTAL)



15445 53RD AVE. S.
SEATTLE, WA 98188
PHONE: (206) 431-7970
FAX: (206) 388-1648
WEB SITE: PACENG.COM

Pacific Engineering Design, LLC
Civil Engineering and Planning Consultants

LAKELAND HILLS ESTATES
CITY OF AUBURN

FOR:
DENOVA NORTHWEST, LLC
C/O MILLENNIAL BUILDERS
17857 1ST AVE SOUTH, PMB#2
AUBURN, WA 98002
PHONE: (206) 423-3684
FAX: (206) 299-9519

PROJECT NO.: 12022
DRAWN BY: ENM
ISSUE DATE: 07-17-07
SHEET REV.: 3-20-2013

RECORD DRAWING CERTIFICATION
THESE DRAWINGS CONFORM TO THE CONTRACTOR'S CONSTRUCTION RECORDS.

BY: _____ DATE _____
TITLE/POSITION: _____
CONFIRMED BY CITY: _____ DATE _____

PROJECT REF: FAC07-0016
HS May 14, 2013
THESE PLANS ARE "APPROVED" FOR CONFORMANCE WITH THE CITY OF AUBURN'S ENGINEERING DIVISION REQUIREMENTS.

APPROVED BY: *Dennis Sello*
DATE APPROVED: 5/15/13

WALL SECTION DETAIL

05056WALLSEC01.DWG
C09
SHEET 09 OF 55