

# PORTION OF THE S.E. 1/4, S.E. 1/4, SECTION 4, TOWNSHIP 23 NORTH, RANGE 5 EAST, W.M.

FILE NAME: \_\_\_\_\_ PLOT DATE: \_\_\_\_\_ PAPER SPACE: \_\_\_\_\_ PLOT SCALE: \_\_\_\_\_

DATE: \_\_\_\_\_ DRAWING NO.: C23 SHEET 24 OF 29

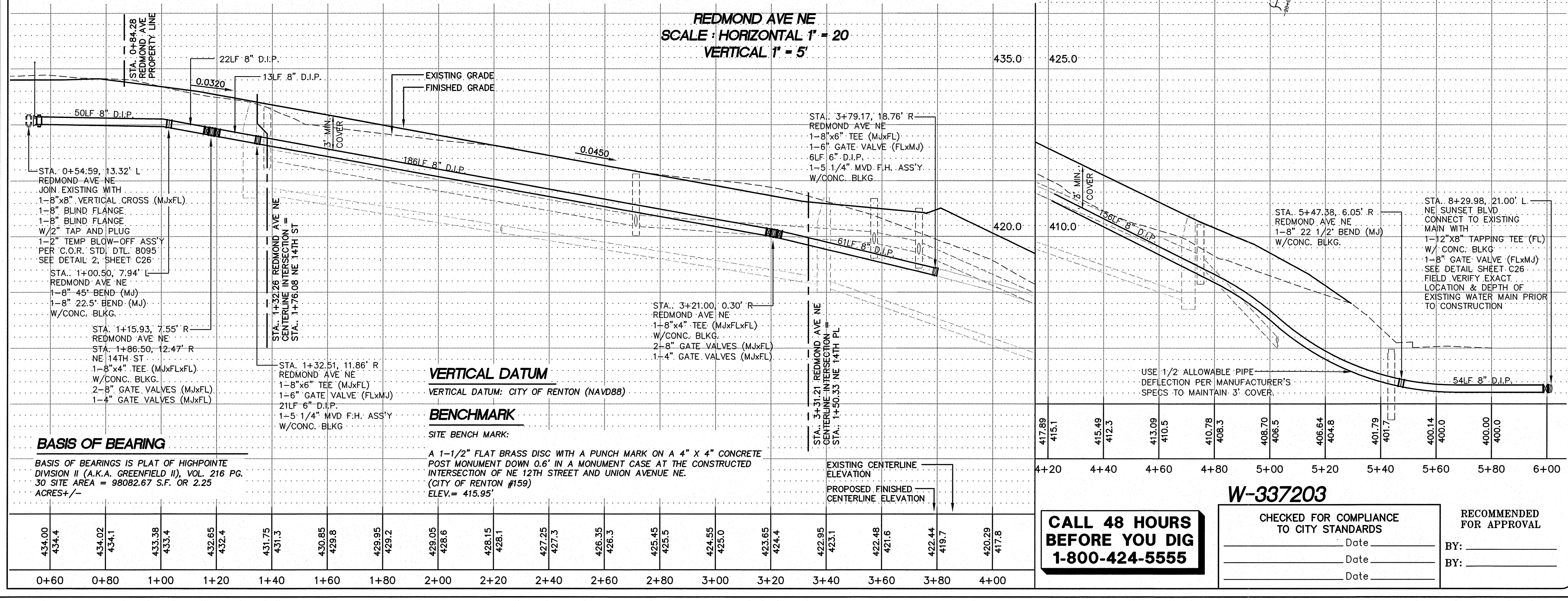
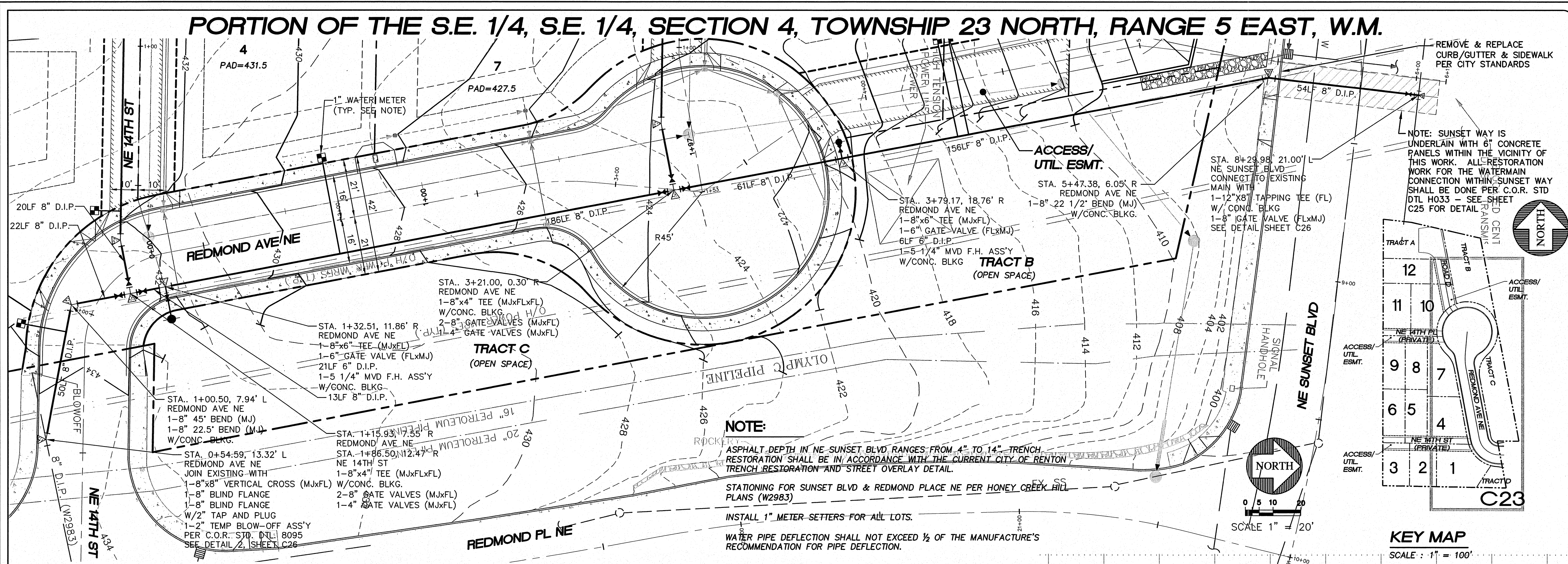
REEDSHAW PLAT  
REDMOND AVE NE WATER PLAN AND PROFILE

CITY OF RENTON

REDMOND AVE NE WATER PLAN AND PROFILE

REVISIONS:

NO.	DATE	BY	APPR	COMMENTS
2		JSC		PER CITY OF RENTON COMMENTS



**BASIS OF BEARING**  
BASIS OF BEARINGS IS PLAT OF HIGHPOINTE DIVISION II (A.K.A. GREENFIELD II), VOL. 216 PG. 30 SITE AREA = 98082.67 S.F. OR 2.25 ACRES +/-

**VERTICAL DATUM**  
VERTICAL DATUM: CITY OF RENTON (NAVD88)

**BENCHMARK**  
SITE BENCH MARK:  
A 1-1/2" FLAT BRASS DISC WITH A PUNCH MARK ON A 4" X 4" CONCRETE POST MONUMENT DOWN 0.6" IN A MONUMENT CASE AT THE CONSTRUCTED INTERSECTION OF NE 12TH STREET AND UNION AVENUE NE. (CITY OF RENTON #159)  
ELEV. = 415.95'

**CALL 48 HOURS BEFORE YOU DIG**  
1-800-424-5555

**W-337203**

CHECKED FOR COMPLIANCE TO CITY STANDARDS

RECOMMENDED FOR APPROVAL

Date \_\_\_\_\_ BY: \_\_\_\_\_

Date \_\_\_\_\_ BY: \_\_\_\_\_

Date \_\_\_\_\_ BY: \_\_\_\_\_



15445 53RD AVE S.  
SEATTLE, WA 98188  
PHONE: (206) 431-7970  
FAX: (206) 388-1648  
WEB SITE: PACENG.COM

**Pacific Engineering Design, LLC**

Civil Engineering and Planning Consultants

RENTON, WA

**REEDSHAW PLAT**

FOR: CALLIUS DEVELOPMENT INC.  
16838 SE 43RD STREET  
ISSAQUAH, WA 98027  
PHONE: (425) 818-8829 FAX: (425) 818-8843

PROJECT NO.: 12007  
DRAWN BY: VK/ENM  
ISSUE DATE: 12/05/06  
SHEET REV.: 07/19/2012

**REDMOND AVE NE WATER PLAN AND PROFILE**

06085WA01-C23.DWG

**C23**

SHEET 24 OF 29