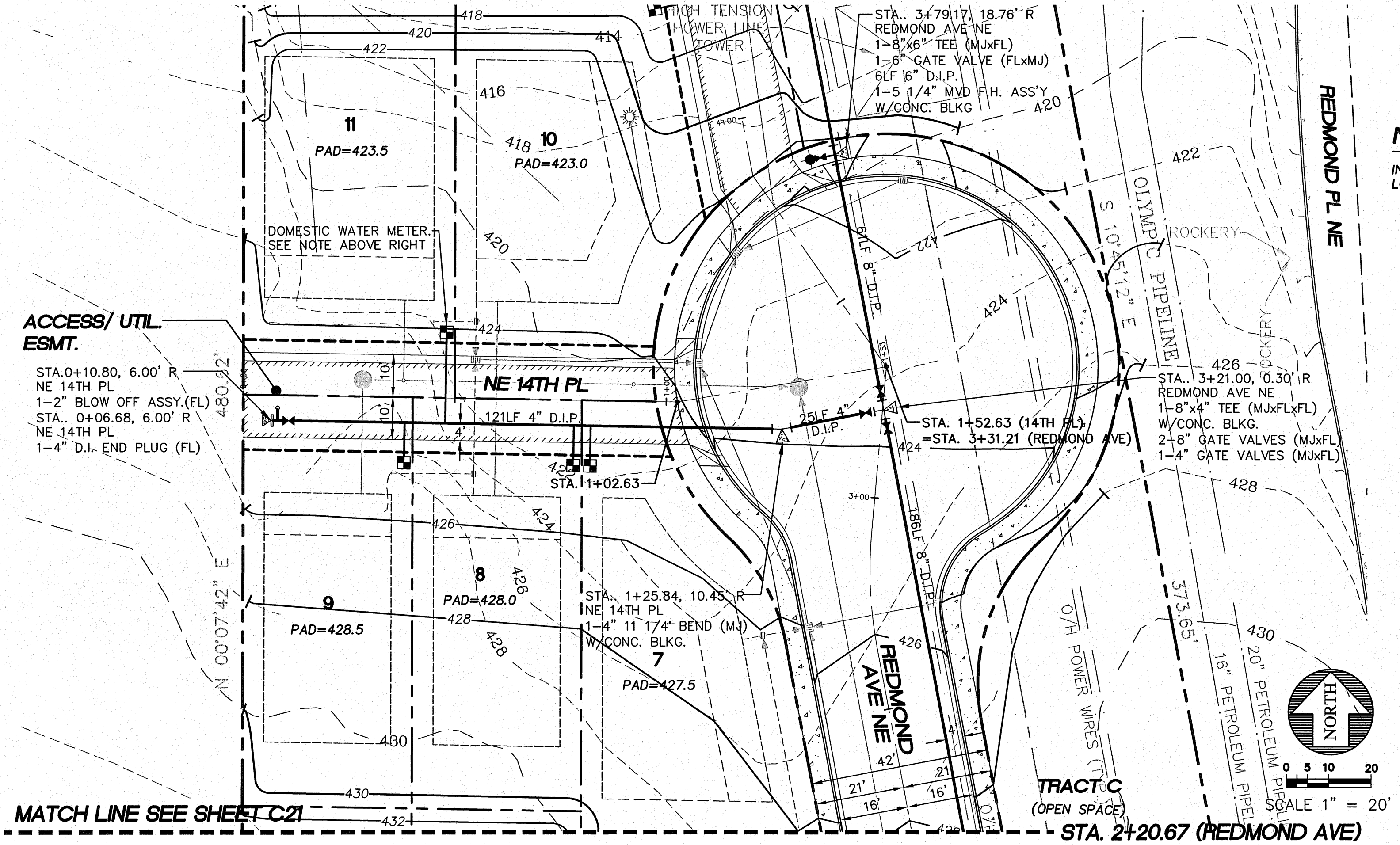
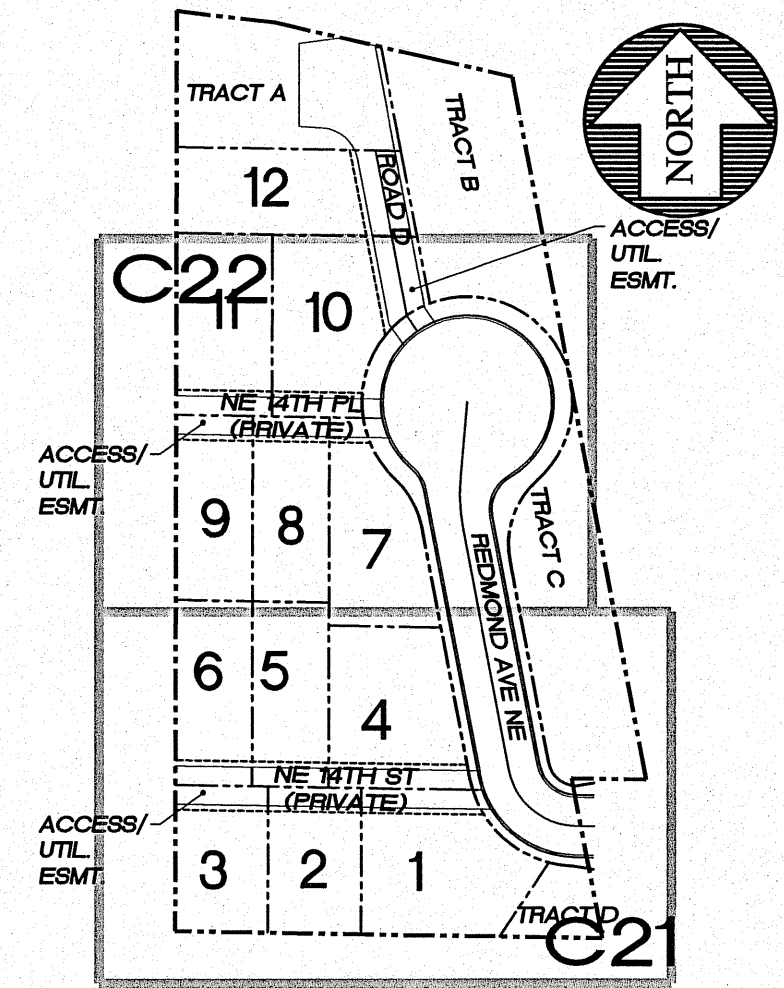


SCALE: 1" = 20'	DESIGNED: LEL	DATE: 07/19/2012
ONE INCH AT FULL SCALE SCALE ACCORDINGLY	DRAWN: VK	DATE: 07/19/2012
	CHECKED: GAD	DATE: 07/19/2012
	APPROVED:	DATE: 07/19/2012
	BY: JGC	DATE: 07/19/2012
	BY: [Signature]	DATE: 07/19/2012
PER CITY OF RENTON COMMENTS		
REVISION		
2		
NO.		

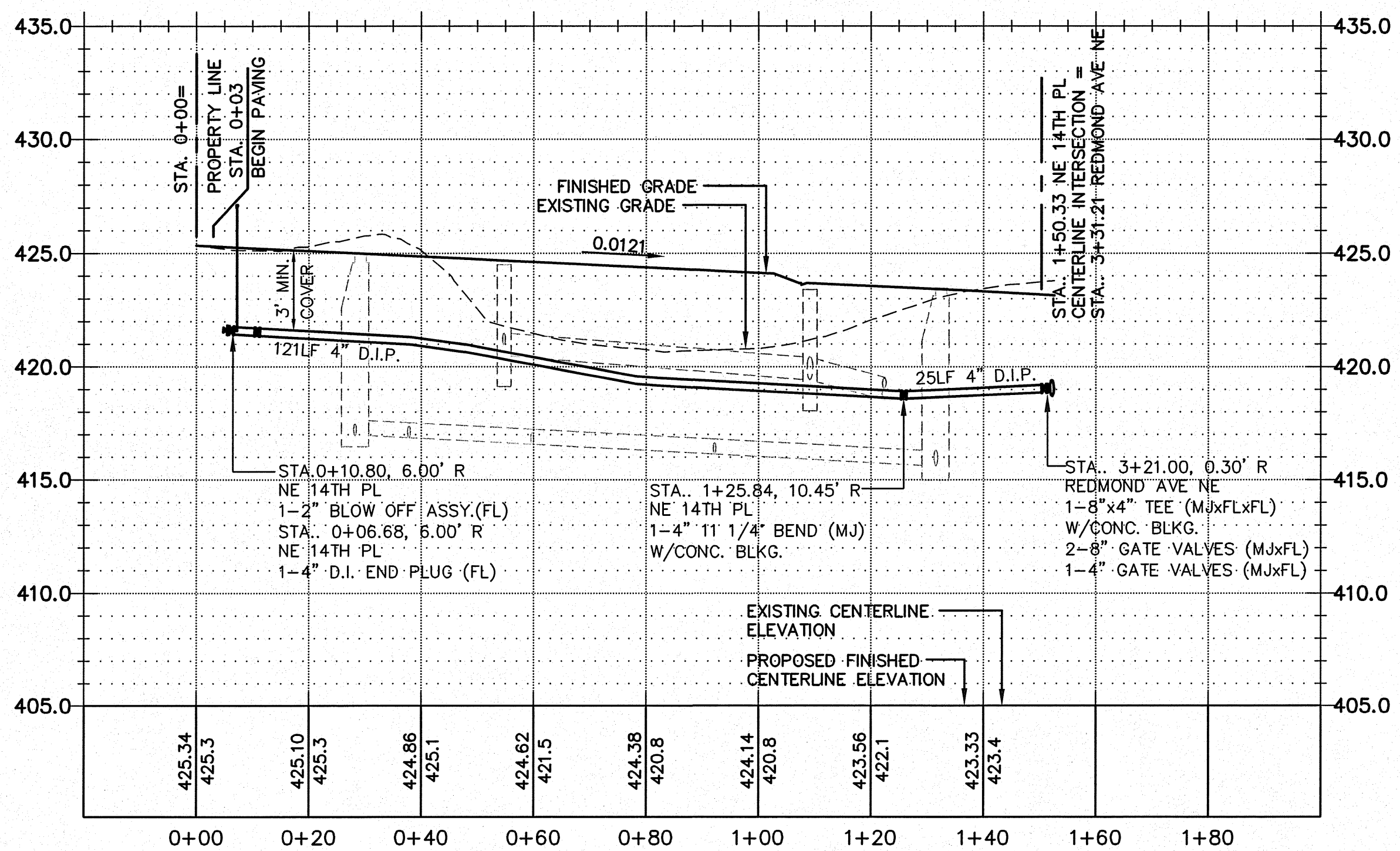
# PORTION OF THE S.E. 1/4, S.E. 1/4, SECTION 4, TOWNSHIP 23 NORTH, RANGE 5 EAST, W.M.



**NOTE:**  
INSTALL 1" METER SETTERS FOR ALL LOTS.



SCALE: HORIZONTAL 1" = 20'  
VERTICAL 1" = 5'



**VERTICAL DATUM**  
VERTICAL DATUM: CITY OF RENTON (NAVD88)

**BENCHMARK**  
SITE BENCH MARK:  
A 1-1/2" FLAT BRASS DISC WITH A PUNCH MARK ON A 4" X 4" CONCRETE POST MONUMENT DOWN 0.6' IN A MONUMENT CASE AT THE CONSTRUCTED INTERSECTION OF NE 12TH STREET AND UNION AVENUE NE. (CITY OF RENTON #159)  
ELEV. = 415.95'

**BASIS OF BEARING**  
BASIS OF BEARINGS IS PLAT OF HIGHPOINTE DIVISION II (A.K.A. GREENFIELD II), VOL. 216 PG. 30 SITE AREA = 98082.67 S.F. OR 2.25 ACRES +/-

W-337202

**CALL 48 HOURS BEFORE YOU DIG**  
1-800-424-5555

CHECKED FOR COMPLIANCE TO CITY STANDARDS  
Date: \_\_\_\_\_  
Date: \_\_\_\_\_  
Date: \_\_\_\_\_

RECOMMENDED FOR APPROVAL  
BY: \_\_\_\_\_  
BY: \_\_\_\_\_



15445 53RD AVE. S.  
SEATTLE, WA 98188  
PHONE: (206) 431-7970  
FAX: (206) 388-1648  
WEB SITE: PACENG.COM

**Pacific Engineering Design, LLC**  
Civil Engineering and Planning Consultants

**REEDSHAW PLAT**  
RENTON, WA

FOR: CALLIUS DEVELOPMENT INC.  
16338 SE 43RD STREET  
ISSAQUAH, WA 98027  
PHONE: (425) 818-8829 FAX: (425) 818-8843

PROJECT NO.: 12007  
DRAWN BY: ENM  
ISSUE DATE: 12/05/06  
SHEET REV.: 07/19/2012

**NE 14TH PL WATER PLAN AND PROFILE**

06085WA01-C22.DWG  
**C22**  
SHEET 23 OF 29