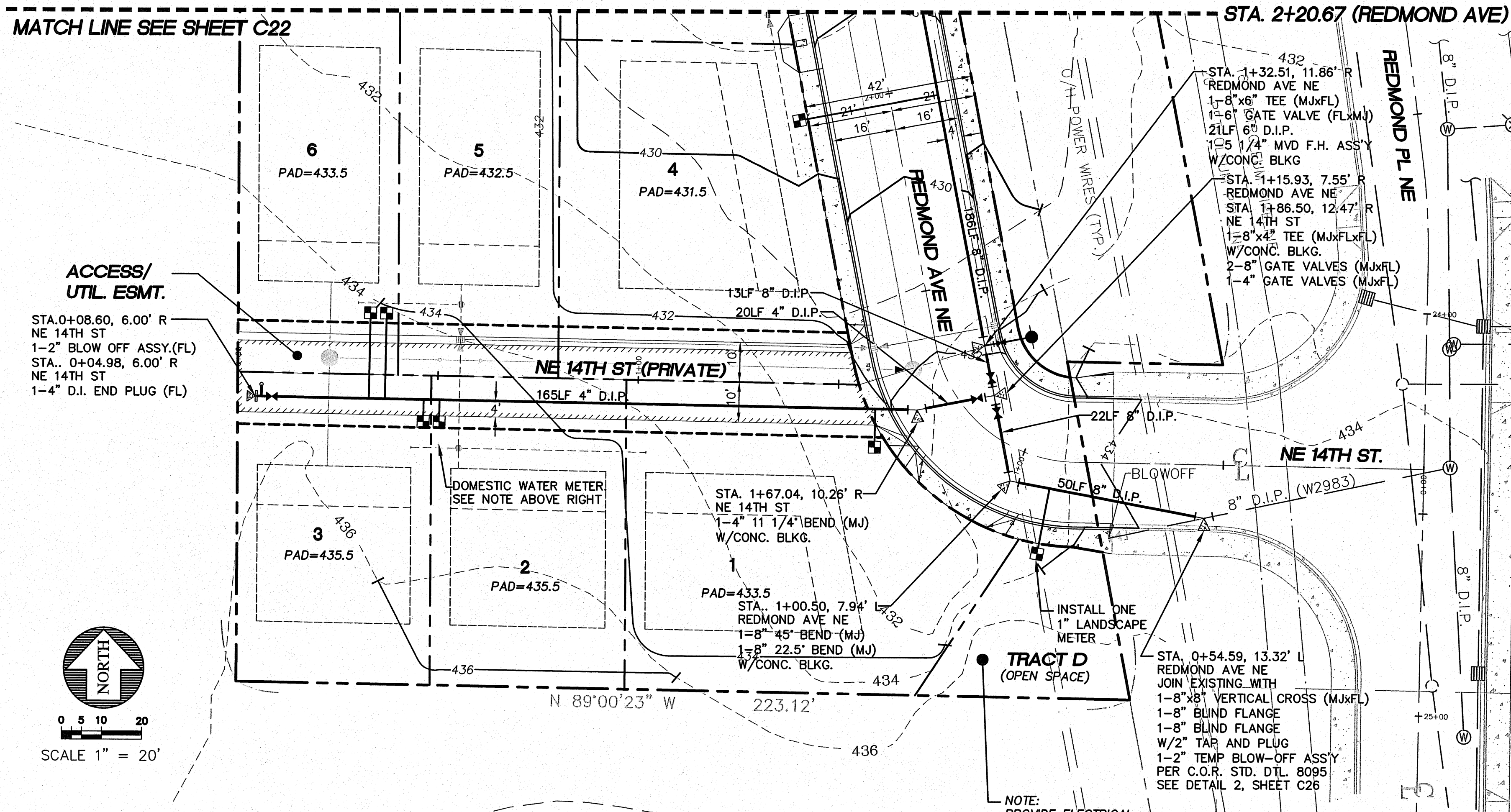


PORTION OF THE S.E. 1/4, S.E. 1/4, SECTION 4, TOWNSHIP 23 NORTH, RANGE 5 EAST, W.M.

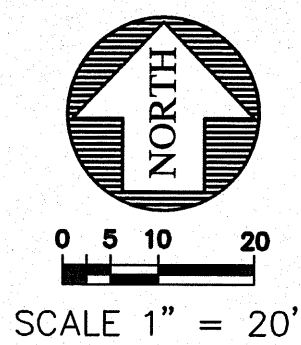
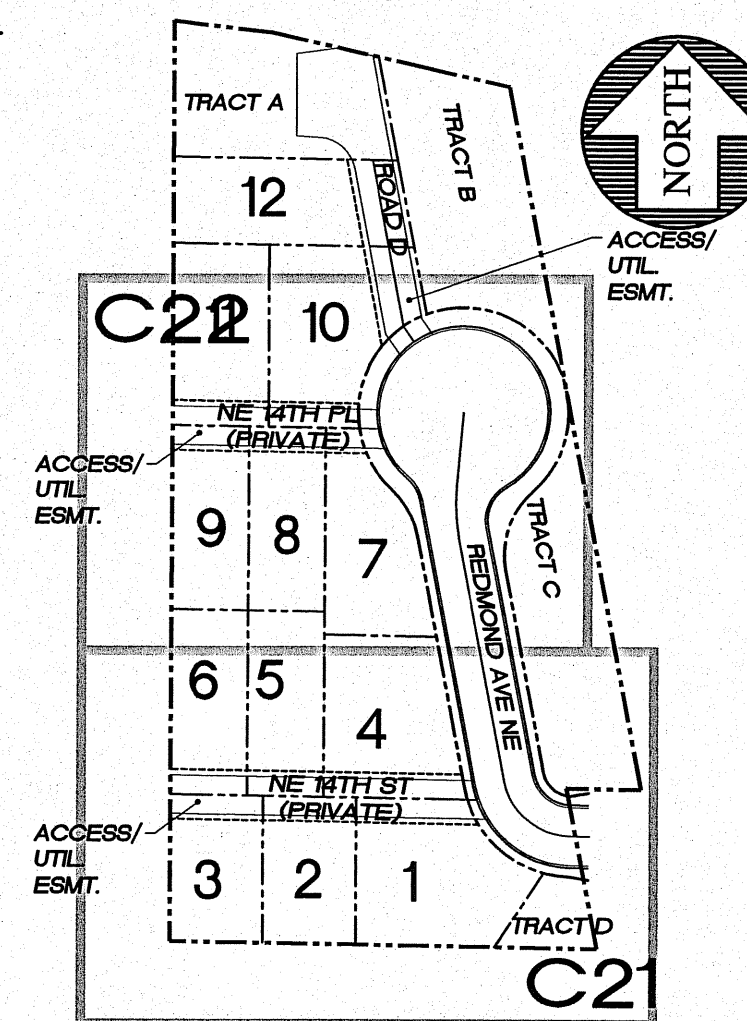


NOTES:

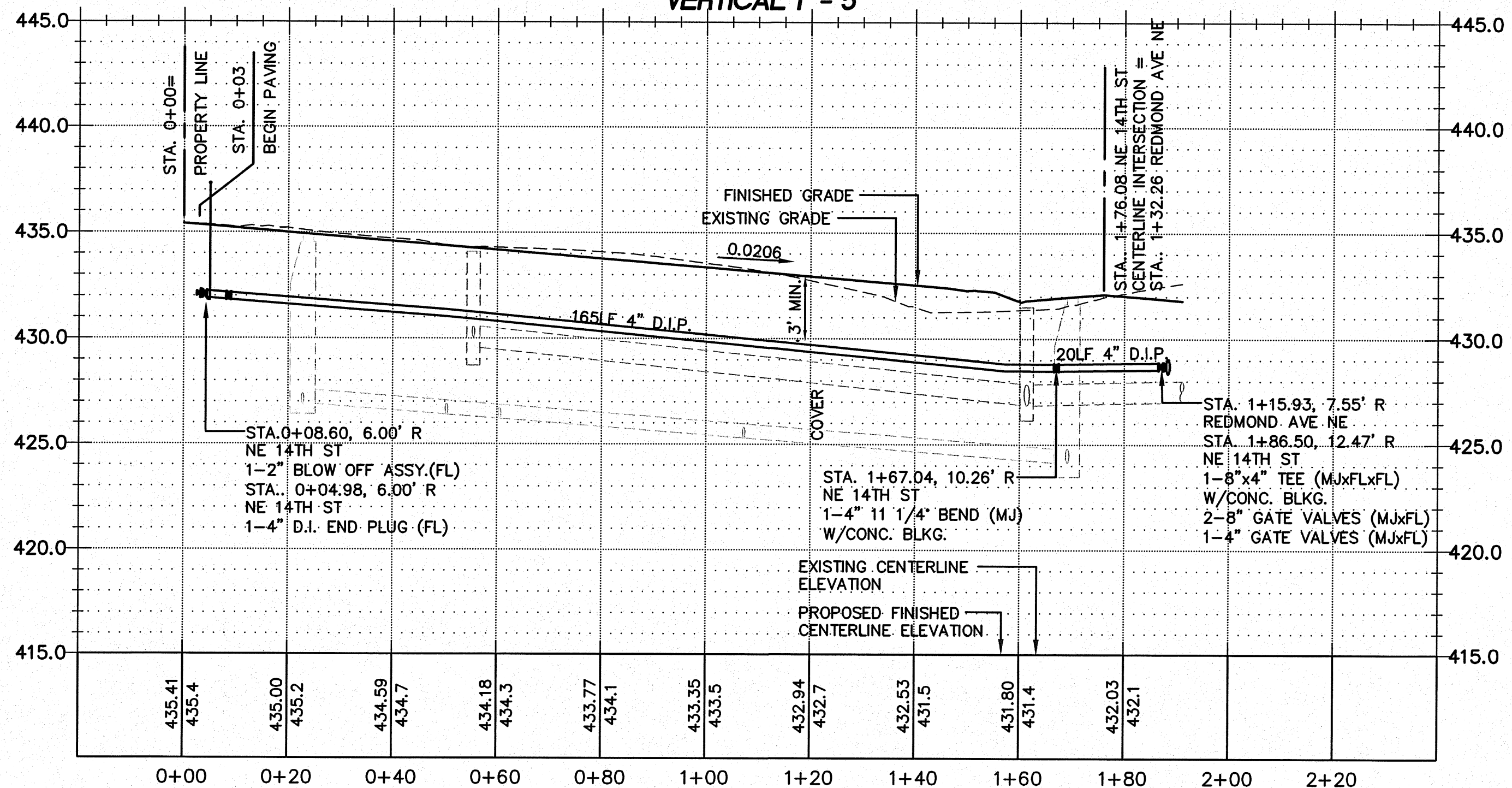
INSTALL 1" METER SETTERS FOR ALL LOTS.

SEE SHEET C27 FOR EXISTING OFF-SITE FIRE HYDRANT LOCATIONS.

STATIONING SHOWN FOR REDMOND PLACE PER HONEY CREEK HILLS PLANS (W2983).



SCALE: HORIZONTAL 1" = 20'  
VERTICAL 1" = 5'



VERTICAL DATUM

VERTICAL DATUM: CITY OF RENTON (NAVD88)

BENCHMARK

SITE BENCH MARK:

A 1-1/2" FLAT BRASS DISC WITH A PUNCH MARK ON A 4" X 4" CONCRETE POST MONUMENT DOWN 0.6' IN A MONUMENT CASE AT THE CONSTRUCTED INTERSECTION OF NE 12TH STREET AND UNION AVENUE NE. (CITY OF RENTON #159)  
ELEV.= 415.95'

BASIS OF BEARING

BASIS OF BEARINGS IS PLAT OF HIGHPOINTE DIVISION II (A.K.A. GREENFIELD II), VOL. 216 PG. 30 SITE AREA = 98082.67 S.F. OR 2.25 ACRES+/-

W-337201

CALL 48 HOURS BEFORE YOU DIG 1-800-424-5555

CHECKED FOR COMPLIANCE TO CITY STANDARDS

Date \_\_\_\_\_

Date \_\_\_\_\_

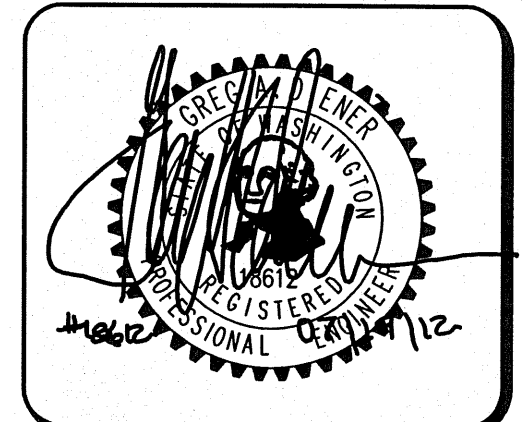
Date \_\_\_\_\_

RECOMMENDED FOR APPROVAL

BY: \_\_\_\_\_

BY: \_\_\_\_\_

CD: DATE	FILEBOOK	PAGE	DRAWING NO.: C21	SHEET 22 OF 29
PAPER SPACE: REEDSHAW PLAT				
NE 14TH ST WATER PLAN AND PROFILE				
CITY OF RENTON				
VERTICAL NAVD 1988 HORIZONTAL NAD 1983/1998 DATUM				
SCALE: 1" = 20'	VERTICAL SCALE: 1" = 5'			
SURVEYED: DESIGNED: LEL DRAWN: VK CHECKED: GAD APPROVED:				
DATE: 08-20-07	BY: LEL	DATE: 08-20-07	BY: APPR	
PER CITY OF RENTON COMMENTS				
REVISION				
NO. 2				



15445 53RD AVE. S.  
SEATTLE, WA 98188  
PHONE: (206) 431-7970  
FAX: (206) 388-1648  
WEB SITE: PACENG.COM

Pacific Engineering Design, LLC

Civil Engineering and Planning Consultants

REEDSHAW PLAT

FOR: CALLIDUS DEVELOPMENT INC.  
16838 SE 43RD STREET  
ISSAQUAH, WA 98027  
PHONE: (425) 818-8829 FAX: (425) 818-8843

RENTON, WA

PROJECT NO.: 12007

DRAWN BY: ENM

ISSUE DATE: 12/05/06

SHEET REV.: 07/19/2012

NE 14TH ST WATER PLAN AND PROFILE

06085WA01-C21.DWG

C21

SHEET 22 OF 29