

PORTION OF THE S.E. 1/4, S.E. 1/4, SECTION 4, TOWNSHIP 23 NORTH, RANGE 5 EAST, W.M.

DATE: \_\_\_\_\_ FILEBOOK: \_\_\_\_\_ PAGE: \_\_\_\_\_ DRAWING NO: C19 SHEET 19 OF 29

REEDSHAW PLAT  
REDMOND AVE NE SANITARY SEWER PLAN AND PROFILE

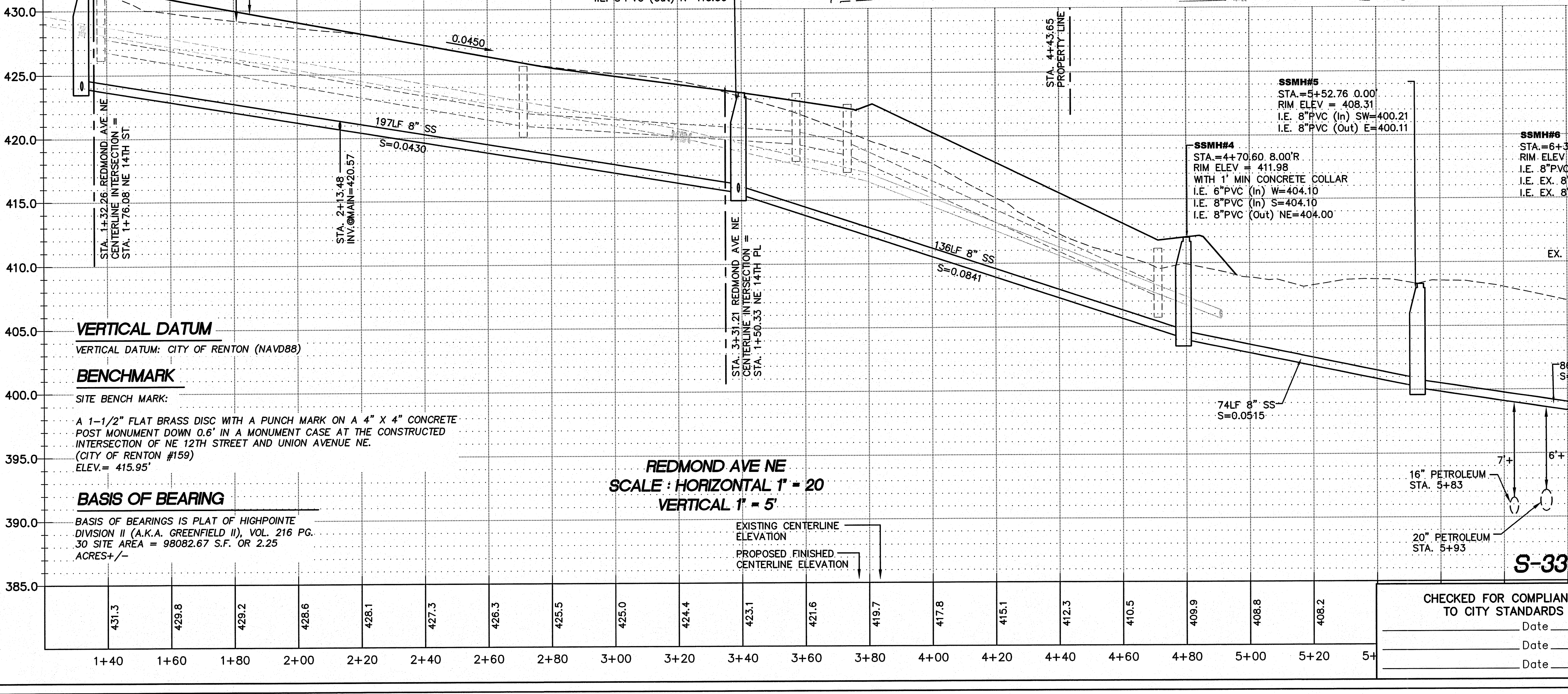
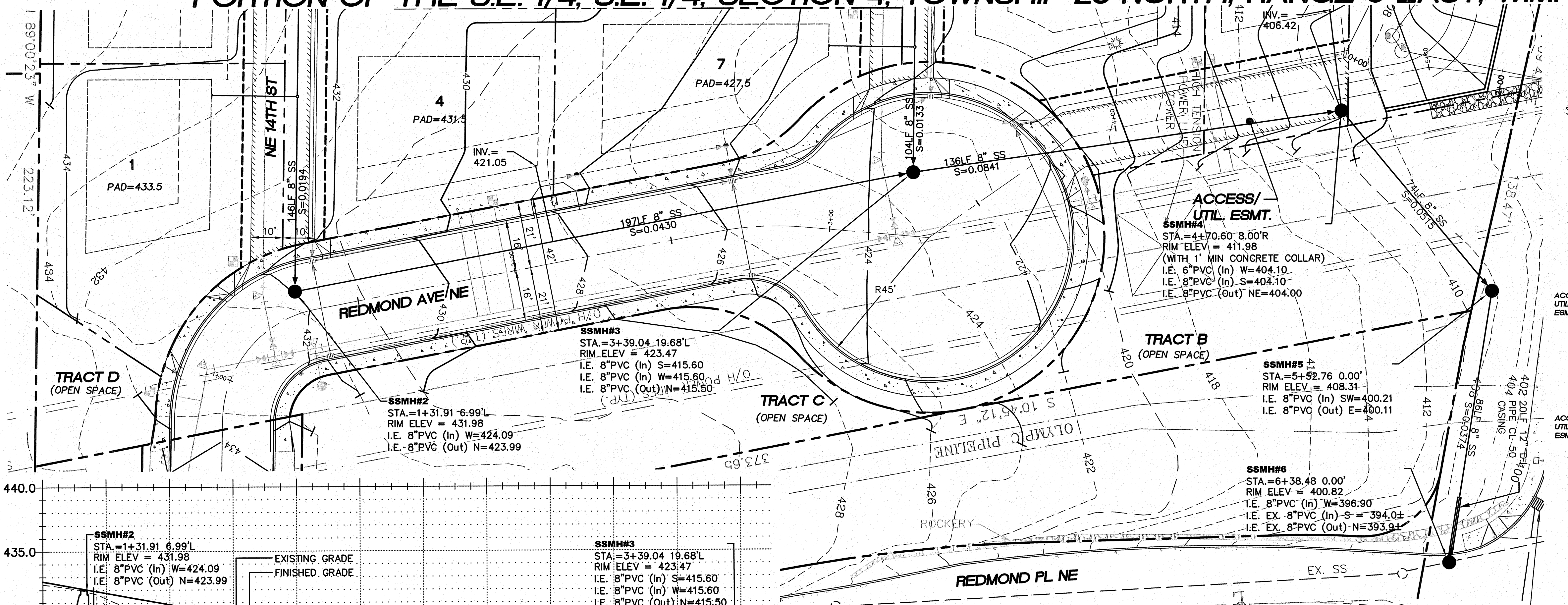
CITY OF RENTON

VERTICAL DATUM: NAVD83  
HORIZONTAL DATUM: NAD83/SPH

SCALE: 1" = 20'  
AT FULL SCALE  
SCALE ACCORDINGLY

NO.	PER CITY OF RENTON COMMENTS	DATE	BY
2			

DESIGNED: LEL  
DRAWN: VK  
CHECKED: GAD  
APPROVED: \_\_\_\_\_

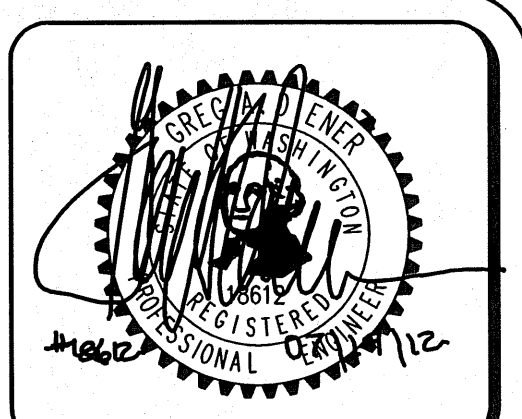


NORTH

SCALE 1" = 20'

KEY MAP  
SCALE: 1" = 100'

CALL 48 HOURS BEFORE YOU DIG  
1-800-424-5555



15445 53RD AVE. S.  
SEATTLE, WA 98188  
PHONE: (206) 431-7970  
FAX: (206) 388-1648  
WEB SITE: PACENG.COM

Pacific Engineering Design, LLC  
Civil Engineering and Planning Consultants

REEDSHAW PLAT  
RENTON, WA

FOR: ILLUS DEVELOPMENT INC.  
1630 4TH STREET  
ISSAQUAH, WA 98027  
PHONE: (425) 818-8829 FAX: (425) 818-8843

PROJECT NO.: 12007  
DRAWN BY: VK/ENM  
ISSUE DATE: 12/05/06  
SHEET REV.: 07/19/2012

REDMOND AVE NE SANITARY SEWER PLAN AND PROFILE

060855W03-C19.DWG  
C19  
SHEET 19 OF 29

CHECKED FOR COMPLIANCE TO CITY STANDARDS

Date \_\_\_\_\_ BY: \_\_\_\_\_  
Date \_\_\_\_\_ BY: \_\_\_\_\_  
Date \_\_\_\_\_

RECOMMENDED FOR APPROVAL