

PORTION OF THE S.E. 1/4, S.E. 1/4, SECTION 4, TOWNSHIP 23 NORTH, RANGE 5 EAST, W.M.

SURFACE WATER DRAINAGE NOTES AND SPECIFICATIONS

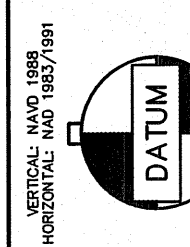
- BEFORE ANY CONSTRUCTION OR DEVELOPMENT ACTIVITY OCCURS, A PRE-CONSTRUCTION MEETING MUST BE HELD WITH THE CITY OF RENTON PLAN REVIEWER.
- ALL CONSTRUCTION SHALL BE IN ACCORDANCE WITH THE 1996 STANDARD SPECIFICATIONS FOR ROAD, BRIDGE AND MUNICIPAL CONSTRUCTION PREPARED BY WSDOT AND THE AMERICAN PUBLIC WORKS ASSOCIATION (APWA), AS AMENDED BY THE CITY OF RENTON PUBLIC WORKS DEPARTMENT.
- THE SURFACE WATER DRAINAGE SYSTEM SHALL BE CONSTRUCTED ACCORDING TO THE APPROVED PLANS, WHICH ARE ON FILE IN THE PUBLIC WORKS DEPARTMENT. ANY DEVIATION FROM THE APPROVED PLANS WILL REQUIRE WRITTEN APPROVAL FROM THE CITY OF RENTON PUBLIC WORKS DEPARTMENT, SURFACE WATER UTILITY SECTION.
- A COPY OF THESE APPROVED PLANS MUST BE ON THE JOB SITE WHENEVER CONSTRUCTION IS IN PROGRESS.
- DATUM SHALL BE NAVD 88 UNLESS OTHERWISE APPROVED BY THE CITY OF RENTON PUBLIC WORKS DEPARTMENT. REFERENCE BENCHMARK AND ELEVATIONS ARE NOTED ON THE PLANS.
- ALL SEDIMENTATION/EROSION FACILITIES MUST BE IN OPERATION PRIOR TO CLEARING AND BUILDING CONSTRUCTION, AND THEY MUST BE SATISFACTORILY MAINTAINED UNTIL CONSTRUCTION IS COMPLETED AND THE POTENTIAL FOR ON-SITE EROSION HAS PASSED.
- ALL RETENTION/DETENTION FACILITIES MUST BE INSTALLED AND IN OPERATION PRIOR TO OR IN CONJUNCTION WITH ALL CONSTRUCTION ACTIVITY UNLESS OTHERWISE APPROVED BY THE PUBLIC WORKS DEPARTMENT, SURFACE WATER UTILITY SECTION.
- GRASS SEED MAY BE APPLIED BY HYDROSEEDING. THE GRASS SEED MIXTURE, OTHER THAN CITY OF RENTON APPROVED STANDARD MIXES, SHALL BE SUBMITTED BY A LANDSCAPE ARCHITECT AND APPROVED BY THE PUBLIC WORKS DEPARTMENT, SURFACE WATER UTILITY SECTION.
- ALL PIPE AND APPURTENANCES SHALL BE LAID ON A PROPERLY PREPARED FOUNDATION IN ACCORDANCE WITH SECTION 7-02.3(1) OF THE CURRENT STATE OF WASHINGTON STANDARD SPECIFICATION FOR ROAD AND BRIDGE CONSTRUCTION. THIS SHALL INCLUDE NECESSARY LEVELING OF THE TRENCH BOTTOM OR THE TOP OF THE FOUNDATION MATERIAL, AS WELL AS PLACEMENT AND COMPACTION OF REQUIRED BEDDING MATERIAL, TO UNIFORM GRADE SO THAT THE ENTIRE LENGTH OF THE PIPE WILL BE SUPPORTED ON A UNIFORMLY DENSE, UNYIELDING BASE. ALL PIPE BEDDING SHALL BE APWA CLASS "C", WITH THE EXCEPTION OF PVC PIPE. ALL TRENCH BACKFILL SHALL BE COMPACTED TO MINIMUM 95% FOR PAVEMENT AND STRUCTURAL FILL AND 90% OTHERWISE PER ASTM D-1557-70. PEA GRAVEL BEDDING SHALL BE 6 INCHES OVER AND UNDER PVC PIPE.

- GALVANIZED STEEL PIPE AND ALUMINIZED STEEL PIPE FOR ALL DRAINAGE FACILITIES SHALL HAVE ASPHALT TREATMENT #1 OR BETTER INSIDE AND OUTSIDE.
- STRUCTURES SHALL NOT BE PERMITTED WITHIN 10 FEET OF THE SPRING LINE OF ANY STORM DRAINAGE PIPE, OR 15 FEET FROM THE TOP OF ANY CHANNEL BANK.
- ALL CATCH BASIN GRATES SHALL BE DEPRESSED 0.10 FEET BELOW PAVEMENT LEVEL.
- OPEN CUT ROAD CROSSINGS THROUGH EXISTING PUBLIC RIGHT OF WAY WILL NOT BE ALLOWED UNLESS SPECIFICALLY APPROVED BY CITY OF RENTON PLANNING/BUILDING/PUBLIC WORKS ADMINISTRATOR.
- ROCK FOR EROSION PROTECTION OF ROADSIDE DITCHES, WHERE REQUIRED, SHALL BE OF SOUND QUARRY ROCK PLACED TO A DEPTH OF ONE (1) FOOT AND MUST MEET THE FOLLOWING SPECIFICATIONS: 4 - 8 INCH ROCK / 40 - 70% PASSING; 2 - 4 INCH ROCK / 30 - 40% PASSING; AND LESS THAN 2 INCH ROCK / 10 - 20% PASSING.
- ALL BUILDING DOWNSPOUTS AND FOOTING DRAINS SHALL BE CONNECTED TO THE STORM DRAINAGE SYSTEM, UNLESS APPROVED BY THE CITY PLAN REVIEWER OR SURFACE WATER UTILITY SECTION. AN ACCURATELY DIMENSIONED, CERTIFIED AS-BUILT DRAWING OF THIS DRAINAGE SYSTEM WILL BE SUBMITTED TO THE CITY UPON COMPLETION.
- ISSUANCE OF THE BUILDING OR CONSTRUCTION PERMITS BY THE CITY OF RENTON DOES NOT RELIEVE THE OWNER OF THE CONTINUING LEGAL OBLIGATION AND/OR LIABILITY CONNECTED WITH STORM SURFACE WATER DISPOSITION. FURTHER, THE CITY OF RENTON DOES NOT ACCEPT ANY OBLIGATION FOR THE PROPER FUNCTIONING AND MAINTENANCE OF THE SYSTEM PROVIDED DURING CONSTRUCTION.
- THE CONTRACTOR SHALL BE RESPONSIBLE FOR PROVIDING ADEQUATE SAFEGUARD, SAFETY DEVICES, PROTECTIVE EQUIPMENT, FLAGGERS, AND ANY OTHER NEEDED ACTIONS TO PROTECT THE LIFE, HEALTH, AND SAFETY OF THE PUBLIC, AND TO PROTECT PROPERTY IN CONNECTION WITH THE PERFORMANCE OF WORK COVERED BY THE CONTRACT. ANY WORK WITHIN THE TRAVELED RIGHT OF WAY THAT MAY INTERRUPT NORMAL TRAFFIC FLOW SHALL REQUIRE A TRAFFIC CONTROL PLAN APPROVED BY THE PUBLIC WORKS DEPARTMENT, TRANSPORTATION SYSTEMS DIVISION. ALL SECTIONS OF THE WSDOT STANDARD SPECIFICATIONS 1-07-23 TRAFFIC CONTROL SHALL APPLY.
- SPECIAL DRAINAGE MEASURES WILL BE REQUIRED IF THE PROJECT LOCATION IS WITHIN THE AQUIFER PROTECTION AREA (APA).
- BEFORE ANY CONSTRUCTION OR DEVELOPMENT ACTIVITY OCCURS, A PRE-CONSTRUCTION MEETING MUST BE HELD WITH THE CITY OF RENTON, PUBLIC WORKS DESIGN ENGINEER.
- ALL LIMITS OF CLEARING AND AREAS OF VEGETATION PRESERVATION AS PRESCRIBED ON THE PLAN(S) SHALL BE CLEARLY FLAGGED IN THE FIELD AND OBSERVED DURING CONSTRUCTION.

- ALL REQUIRED SEDIMENTATION/EROSION CONTROL FACILITIES MUST BE CONSTRUCTED AND IN OPERATION PRIOR TO LAND CLEARING AND/OR CONSTRUCTION TO ENSURE THAT SEDIMENT LADEN WATER DOES NOT ENTER THE NATURAL DRAINAGE SYSTEM. ALL EROSION AND SEDIMENT FACILITIES SHALL BE MAINTAINED IN A SATISFACTORY CONDITION UNTIL SUCH TIME THAT CLEARING AND/OR CONSTRUCTION IS COMPLETE AND POTENTIAL FOR ON-SITE EROSION HAS PASSED. THE IMPLEMENTATION, MAINTENANCE, REPLACEMENT AND ADDITIONS TO EROSION/SEDIMENTATION CONTROL SYSTEMS SHALL BE THE RESPONSIBILITY OF THE PERMITEE.
- THE EROSION AND SEDIMENTATION CONTROL SYSTEMS DEPICTED ON THIS DRAWING ARE INTENDED TO BE MINIMUM REQUIREMENTS TO MEET ANTICIPATED SITE CONDITIONS. AS CONSTRUCTION PROGRESSES AND UNEXPECTED OR SEASONAL CONDITIONS DICTATE, THE PERMITEE SHALL ANTICIPATE THAT MORE EROSION AND SEDIMENTATION CONTROL FACILITIES WILL BE NECESSARY TO ENSURE COMPLETE SILTATION CONTROL ON THE PROPOSED SITE. DURING THE COURSE OF CONSTRUCTION, IT SHALL BE THE OBLIGATION AND RESPONSIBILITY OF THE PERMITEE TO ADDRESS ANY NEW CONDITIONS THAT MAY BE CREATED BY THE ACTIVITIES AND TO PROVIDE ADDITIONAL FACILITIES, OVER AND ABOVE MINIMUM REQUIREMENTS, AS MAY BE NEEDED, TO PROTECT ADJACENT PROPERTIES AND WATER QUALITY OF THE RECEIVING DRAINAGE SYSTEM.
- APPROVAL OF THIS PLAN IS FOR EROSION/SEDIMENTATION CONTROL ONLY. IT DOES NOT CONSTITUTE AN APPROVAL OF STORM DRAINAGE DESIGN, SIZE NOR LOCATION OF PIPES, RESTRICTORS, CHANNELS, OR RETENTION FACILITIES.
- DURING THE TIME PERIOD OF OCTOBER 1ST THROUGH APRIL 30TH, ALL PROJECT DISTRIBUTED SOIL AREAS GREATER THAN 5,000 SQUARE FEET, THAT ARE TO BE LEFT UN-WORKED FOR MORE THAN 12 HOURS, SHALL BE COVERED BY MULCH, SODDING OR PLASTIC COVERING.
- IN ANY AREA WHICH HAS BEEN STRIPPED OF VEGETATION AND WHERE NO FURTHER WORK IS ANTICIPATED FOR A PERIOD 30 DAYS OR MORE, ALL DISTURBED AREAS MUST BE IMMEDIATELY STABILIZED WITH MULCHING, GRASS PLANTING OR OTHER APPROVED EROSION CONTROL TREATMENT APPLICABLE TO THE TIME OF YEAR. GRASS SEEDING ALONE WILL BE ACCEPTABLE ONLY DURING THE MONTHS OF APRIL THROUGH SEPTEMBER, INCLUSIVE. SEEDING MAY PROCEED, HOWEVER, WHENEVER IT IS IN THE INTEREST OF THE PERMITEE, BUT MUST BE AUGMENTED WITH MULCHING, NETTING OR OTHER TREATMENT APPROVED BY THE CITY OF RENTON, OUTSIDE THE SPECIFIED TIME PERIOD.
- FOR ALL EROSION/SEDIMENTATION CONTROL PONDS WHERE THE DEAD STORAGE DEPTH EXCEEDS 6 INCHES, A FENCE IS REQUIRED WITH A MINIMUM HEIGHT OF THREE (3) FEET, 3:1 SIDE SLOPES.
- A TEMPORARY GRAVEL CONSTRUCTION ENTRANCE, 24 FEET X 50 FEET X 8 INCHES OF 4 TO 6 INCH QUARRY SPALLS SHALL BE LOCATED AT ALL POINTS OF VEHICULAR INGRESS AND EGRESS TO THE CONSTRUCTION SITE.

REEDSHAW PLAT
STORM DRAINAGE DETAILS AND NOTES

CITY OF RENTON



SCALE: NONE

DESIGNED: LEL
DRAWN: VK
CHECKED: GAD
APPROVED:

DATE: 12/05/06

BY: JCC

REVISION

PER CITY OF RENTON COMMENTS

NO. 2

DATE: 07/19/2012

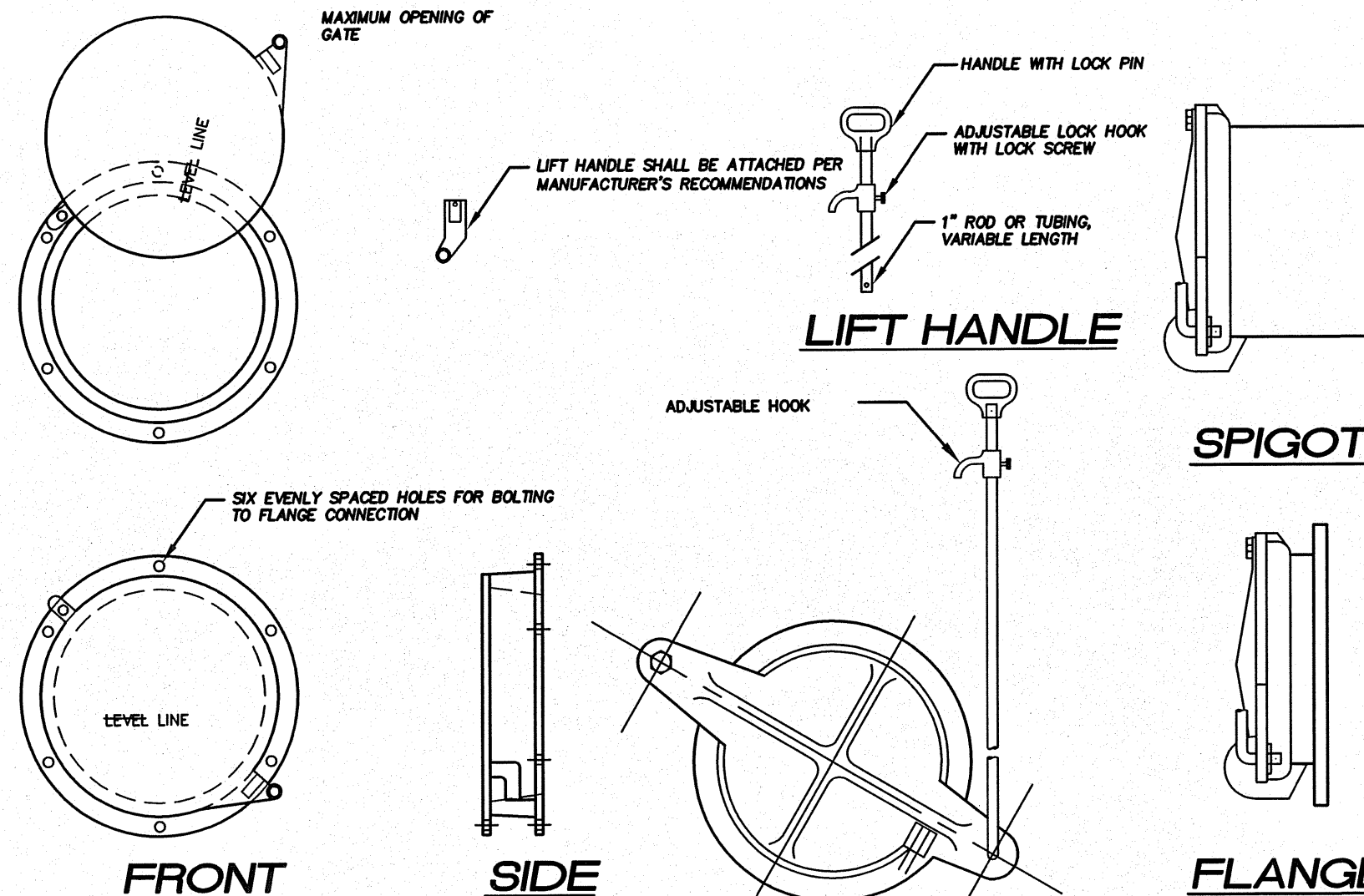
REVISION

DATE: 07/19/2012

DATE: 07/19/2012

DATE: 07/19/2012

DATE: 07/19/2012



NOTES :

- Shear gate shall be aluminum alloy per ASTM B-26-ZG-32a or cast iron ASTM A48 Class 30B as required.
- Gate shall be 8" diameter for pipe 12 inches or less in diameter, 12" diameter for pipes greater than 12".
- Gate shall be joined to tee section by bolting through flange.
- Lift Rod: As specified by mfr. with handle extending to within one of cover and adjustable hook lock fastened to frame or upper handhold.
- Gate shall not open beyond the clear opening by limited hinge movement, stop tab, or some other device.
- Neoprene rubber gasket required between riser mounting flange and gate flange.
- Mating surfaces of lid and body to be machined for proper fit.
- Flange mounting bolts shall be 3/8" diameter stainless steel.
- Alternate shear gates to the design shown are acceptable, provided they meet the material specifications above.

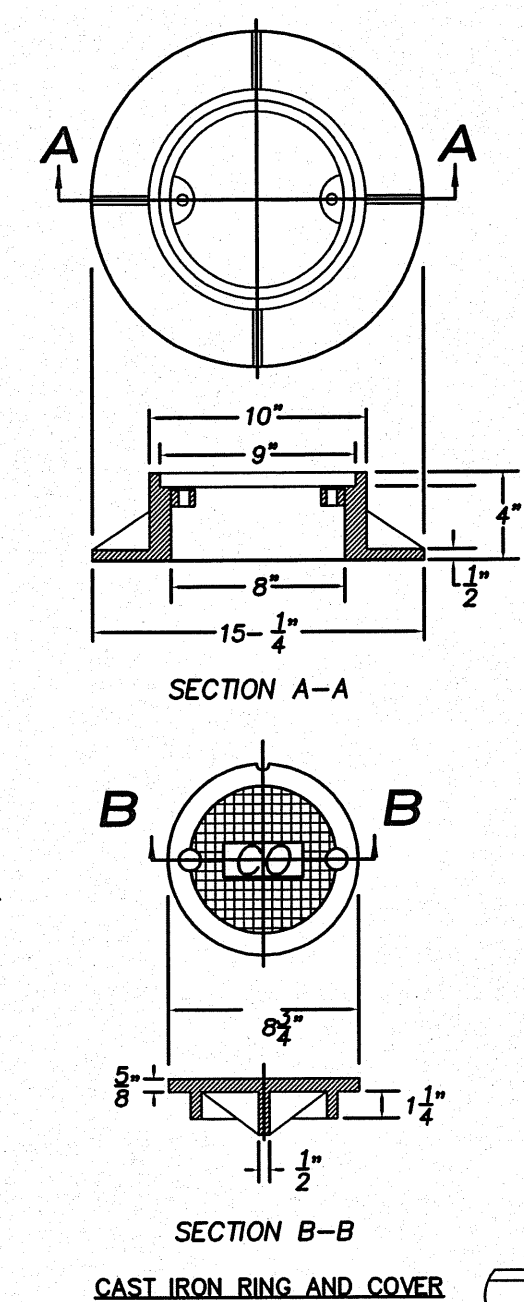


ADOPTED
CITY OF RENTON
Standard plans
LST DATE: 8/97

PIVOTING FROP-T SHEAR GATE DETAIL

DWG. NAME : BR05

SP PAGE : B033



NOTES :

- All cleanouts shall be Inland Foundry Co. Inc. No. 247.
- In unimproved areas, pour a 1'-0" thick, 2'-0" square concrete, class 3000, pad around the ring and cover.
- In asphalt roadways, restore around cleanout ring and cover as required by standard detail drawing BR36.

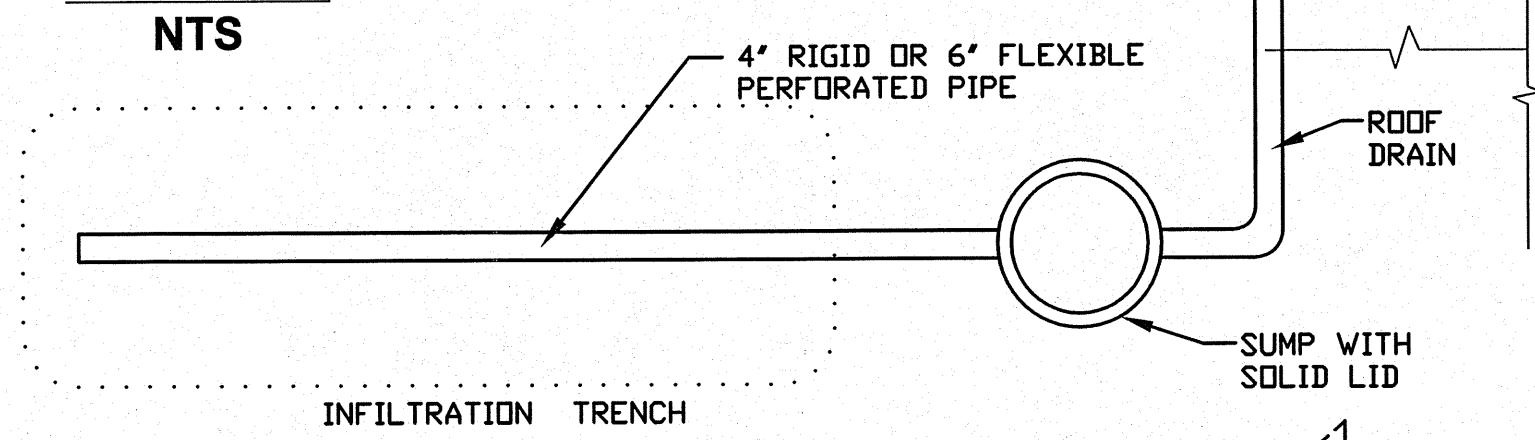
ADOPTED
CITY OF RENTON
Standard plans
LST DATE: B076

6 INCH OR 8 INCH CLEANOUT

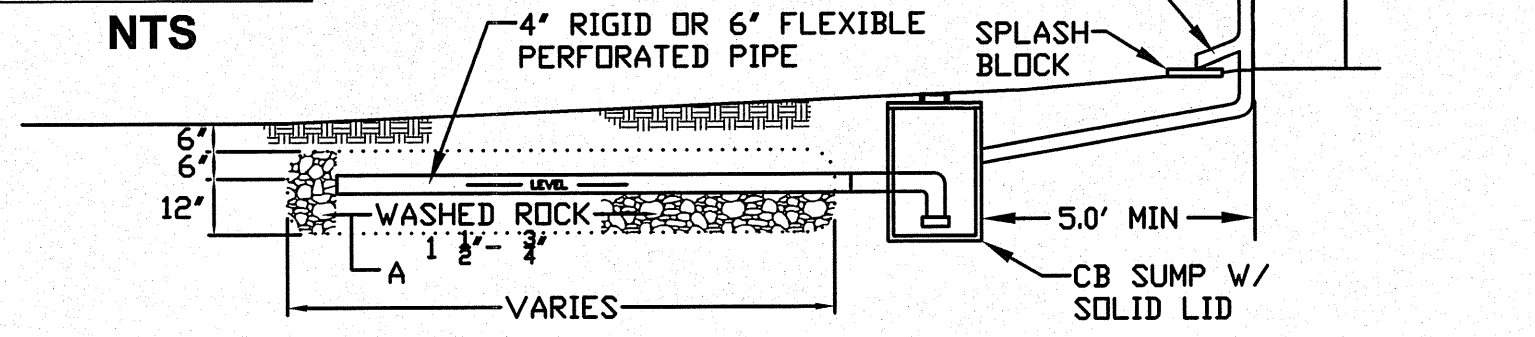
DWG. NAME : 04/2003

SP PAGE : BW188

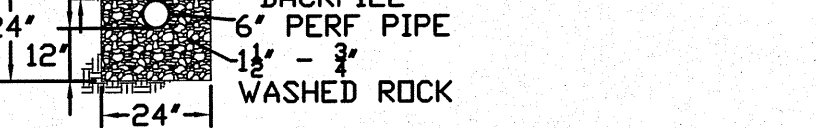
PLAN VIEW



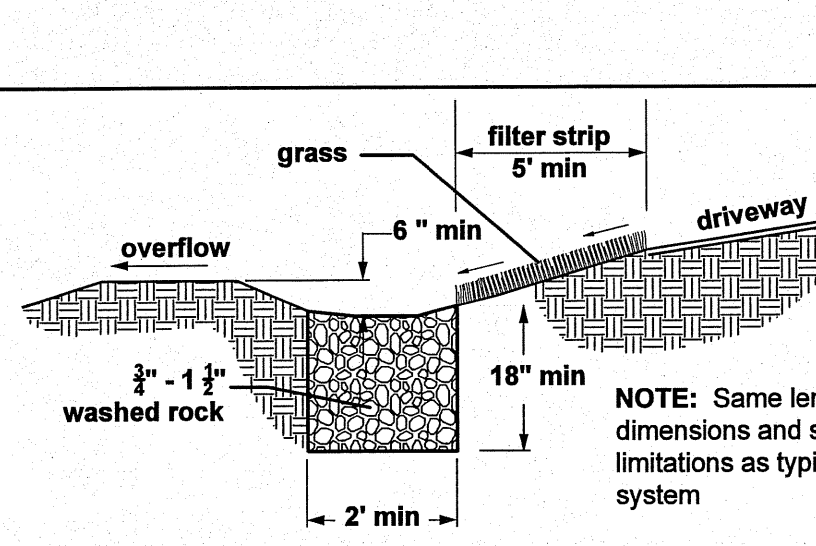
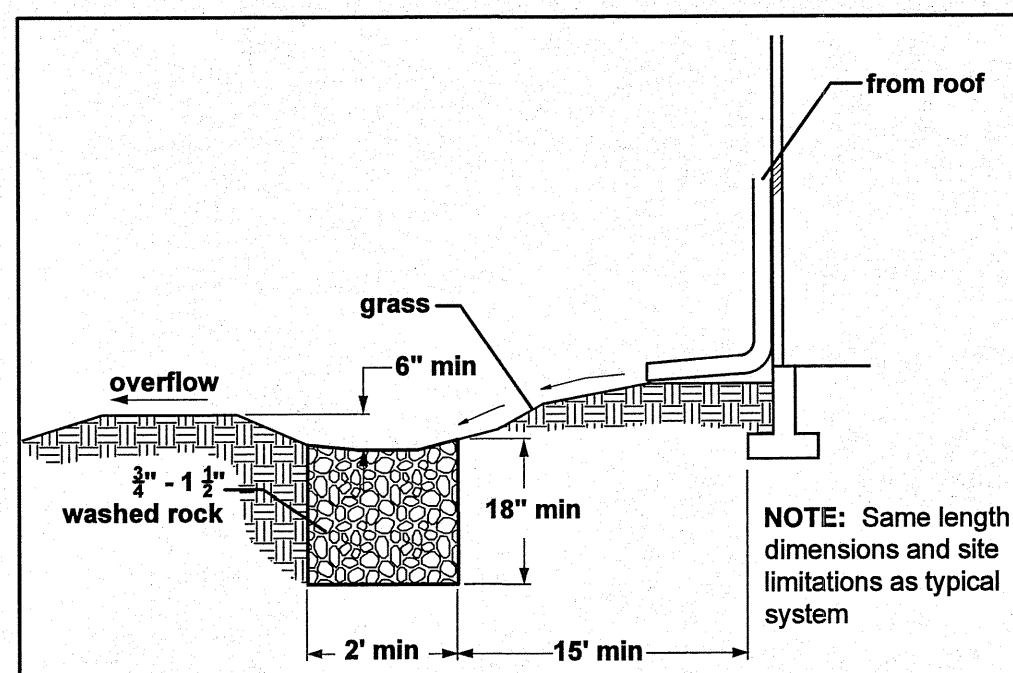
PLAN VIEW



SECTION A



SECTION A



CHECKED FOR COMPLIANCE TO CITY STANDARDS

Date _____
Date _____
Date _____

RECOMMENDED FOR APPROVAL

BY: _____
BY: _____

R-337215



15445 53RD AVE. S.
SEATTLE, WA 98188
PHONE: (206) 431-7970
FAX: (206) 388-1648
WEB SITE: PACENG.COM

Pacific Engineering Design, LLC
Civil Engineering and Planning Consultants

REEDSHAW PLAT
RENTON, WA
FOR: ILLUS DEVELOPMENT INC.
1638 SE 49RD STREET
ISSAQUAH, WA 98027
PHONE: (425) 818-8829 FAX: (425) 818-8843

PROJECT NO.: 12007
DRAWN BY: VK
ISSUE DATE: 12/05/06
SHEET REV.: 07/19/2012

STORM DRAINAGE DETAILS AND NOTES

06085D03-C15.DWG
C15
SHEET 15 OF 29