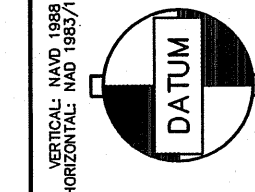


PORTION OF THE S.E. 1/4, S.E. 1/4, SECTION 4, TOWNSHIP 23 NORTH, RANGE 5 EAST, W.M.

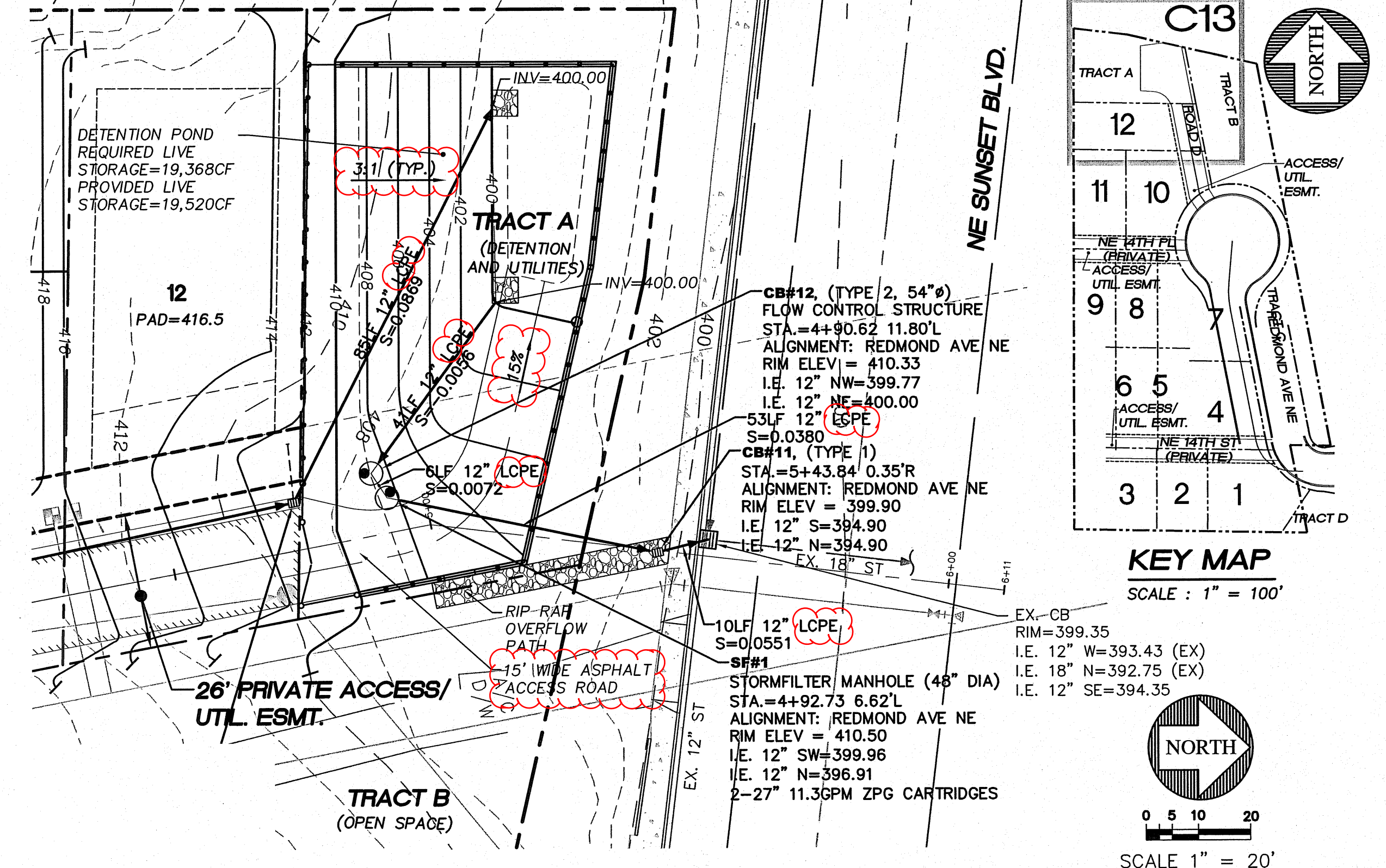
REEDSHAW PLAT
STORM LINE PLAN AND PROFILE THROUGH
DETENTION POND

CITY OF
RENTON



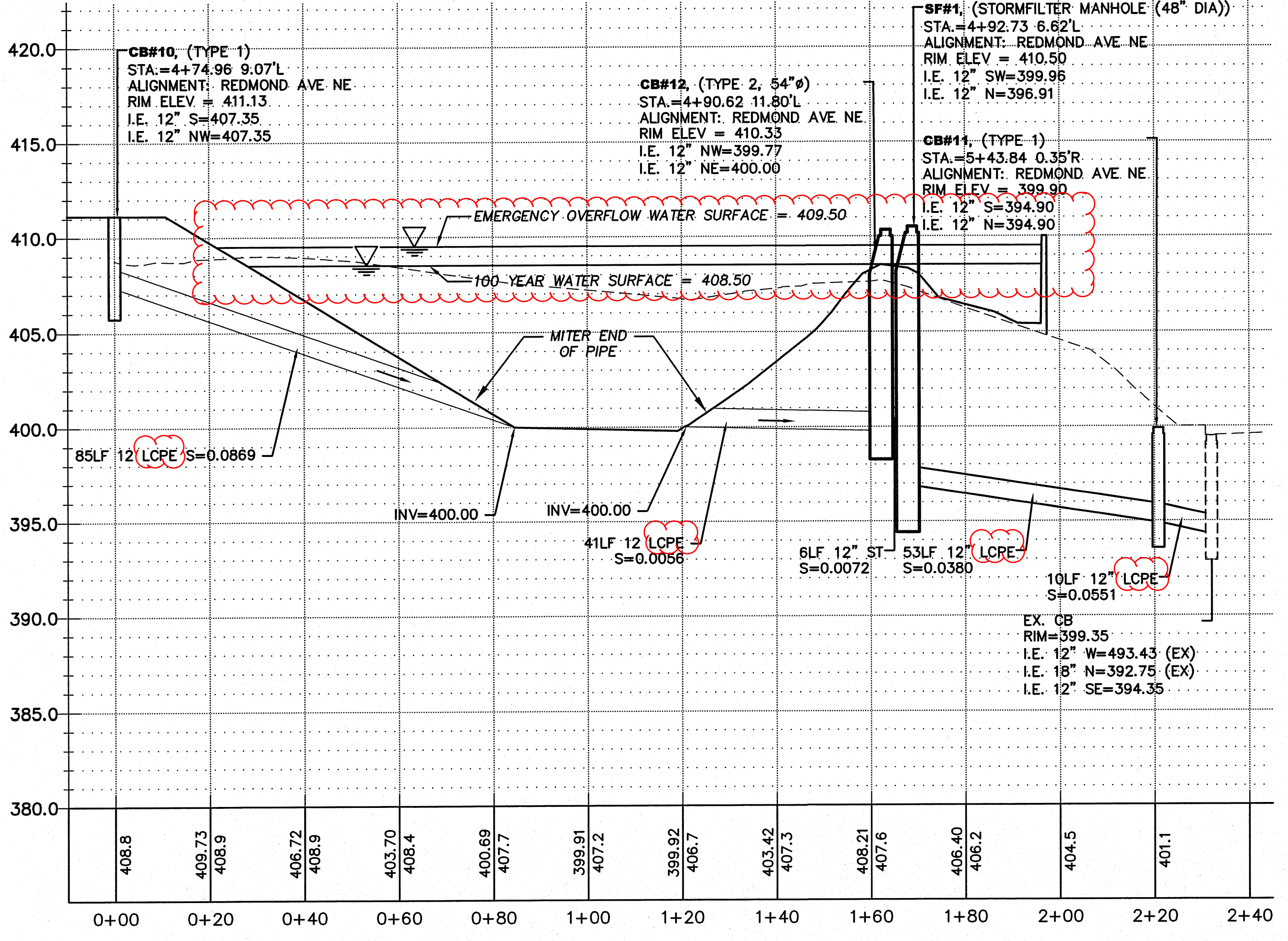
SCALE: 1"=20'
VERTICAL DATUM: CITY OF RENTON (NAVD88)

NO.	DATE	REVISION	PER CITY OF RENTON COMMENTS
2			



SCALE: HORIZONTAL 1" = 20'
VERTICAL 1" = 5'

NOTE: CONTRACTOR TO VERIFY EXISTING UTILITIES BEHIND OR UNDER SIDEWALK ALONG SUNSET PRIOR TO INSTALLATION OF VAULT OUTFALL. NOTIFY ENGINEER OF ANY CONFLICTS.

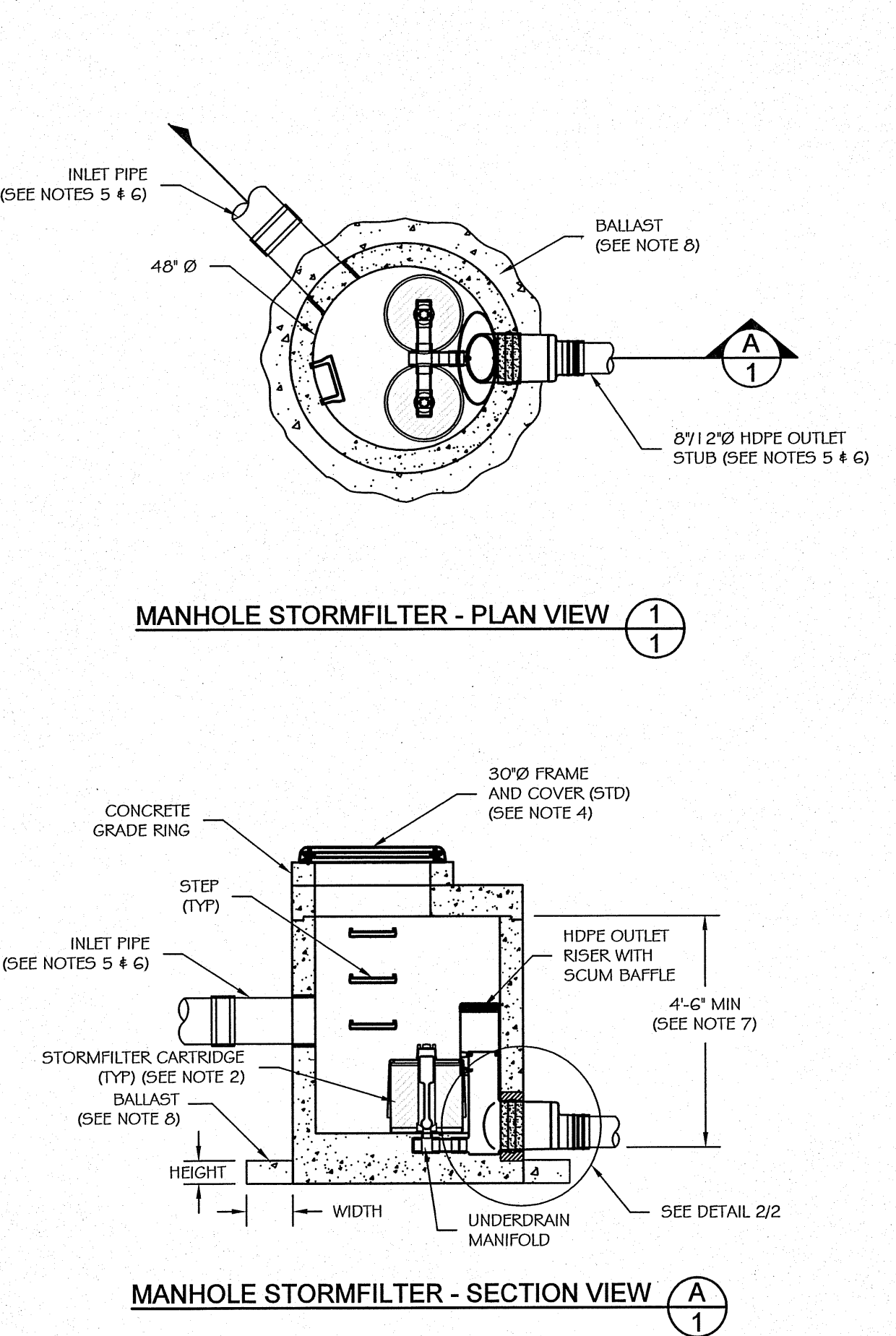


VERTICAL DATUM
VERTICAL DATUM: CITY OF RENTON (NAVD88)

BENCHMARK
SITE BENCH MARK:
A 1-1/2" FLAT BRASS DISC WITH A PUNCH MARK ON A 4" X 4" CONCRETE POST MONUMENT DOWN 0.6" IN A MONUMENT CASE AT THE CONSTRUCTED INTERSECTION OF NE 12TH STREET AND UNION AVENUE NE. (CITY OF RENTON #159)
ELEV.= 415.95'

BASIS OF BEARING
BASIS OF BEARINGS IS PLAT OF HIGHPOINTE DIVISION II (A.K.A. GREENFIELD II), VOL. 216 PG. 30 SITE AREA = 98082.67 S.F. OR 2.25 ACRES+/-

- NOTES:**
- ALL MAINLINE STORM PIPE SHALL BE ADS N-12 WT 18 SMOOTH INTERIOR WALL PIPE UNLESS OTHERWISE NOTED. THE MAIN AND FITTINGS WILL NEED TO BE AIR TESTABLE PER ASTM F1417 WATERTIGHT FIELD TEST.
 - ALL 6" AND 8" DIAMETER STORM PIPE SHALL BE PVC ASTM 3034 SDR 35.
 - DUCTILE IRON PIPE IS REQUIRED FOR ALL PIPE WITH LESS THAN 2' OF COVER.



- GENERAL NOTES**
- STORMFILTER BY CONTECH STORMWATER SOLUTIONS; PORTLAND, OR (800) 548-4667; SCARBOROUGH, ME (877) 907-8676; ELK RIDGE, MD (866) 740-3318.
 - FILTER CARTRIDGES TO BE SIPHON-ACTUATED AND SELF-CLEANING. STANDARD DETAIL SHOWS MAXIMUM NUMBER OF CARTRIDGES. ACTUAL NUMBER REQUIRED TO BE SPECIFIED ON SITE PLANS OR IN DATA TABLE BELOW.
 - PRECAST MANHOLE STRUCTURE TO BE CONSTRUCTED IN ACCORDANCE WITH ASTM C478. DETAIL REFLECTS DESIGN INTENT ONLY. ACTUAL DIMENSIONS AND CONFIGURATION OF STRUCTURE WILL BE SHOWN ON PRODUCTION SHOP DRAWING.
 - STRUCTURE AND ACCESS COVERS TO MEET AASHTO H-20 LOAD RATING.
 - STORMFILTER REQUIRES 3.05 FEET OF DROP FROM INLET TO OUTLET. IF LESS DROP IS AVAILABLE, CONTACT CONTECH STORMWATER SOLUTIONS. MINIMUM ANGLE BETWEEN INLET AND OUTLET IS 45°.
 - INLET PIPING TO BE SPECIFIED BY ENGINEER AND PROVIDED BY CONTRACTOR. PRECAST MANHOLE STORMFILTER EQUIPPED WITH A DUAL DIAMETER HDPE OUTLET STUB AND SAND COLLAR. EIGHT INCH DIAMETER OUTLET SECTION MAY BE SEPARATED FROM OUTLET STUB AT MOLDED-IN CUT LINE TO ACCOMMODATE A 12 INCH OUTLET PIPE. CONNECTION TO DOWNSTREAM PIPING TO BE MADE USING A FLEXIBLE COUPLING OR ECCENTRIC REDUCER, AS REQUIRED. COUPLING BY FERRO OR EQUAL AND PROVIDED BY CONTRACTOR.
 - PROVIDE MINIMUM CLEARANCE FOR MAINTENANCE ACCESS. IF A SHALLOWER SYSTEM IS REQUIRED, CONTACT CONTECH STORMWATER SOLUTIONS FOR OTHER OPTIONS.
 - ANTI-FLOTATION BALLAST TO BE SPECIFIED BY ENGINEER AND PROVIDED BY CONTRACTOR, IF REQUIRED. BALLAST TO BE SET AROUND THE PERIMETER OF THE STRUCTURE.
 - ALL STORMFILTERS REQUIRE REGULAR MAINTENANCE. REFER TO OPERATION AND MAINTENANCE GUIDELINES FOR MORE INFORMATION.

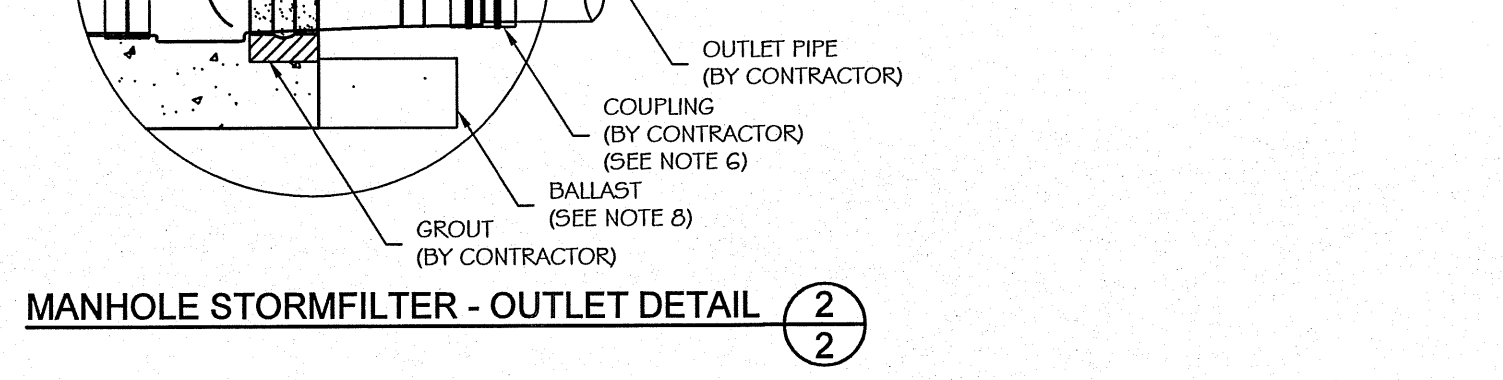
PRECAST MANHOLE STORMFILTER DATA

STRUCTURE ID	SF#1
WATER QUALITY FLOW RATE (cfs)	0.041
PEAK FLOW RATE (<1 cfs)	0.123
RETURN PERIOD OF PEAK FLOW (yrs)	100
# OF CARTRIDGES REQUIRED	2
CARTRIDGE FLOW RATE (1.5 or 7.5 gpm)	11.3
MEDIA TYPE (CSF, FERLITE, ZFC)	ZFC
RIM ELEVATION	410.50

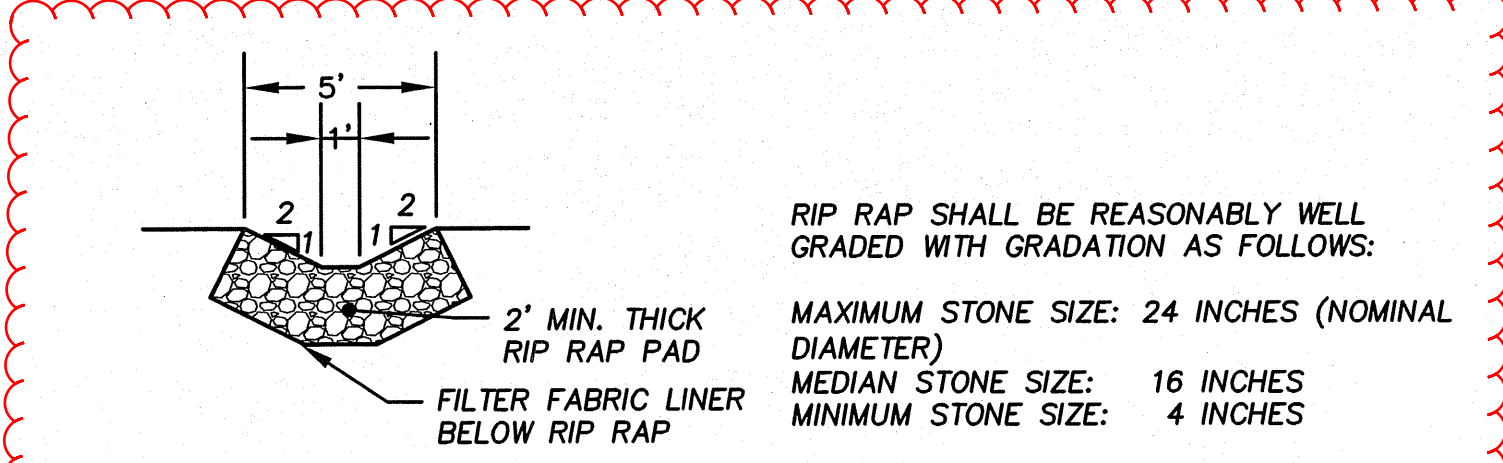
PIPE DATA:	I.E.	ORIENTATION	MATERIAL	DIAMETER
INLET PIPE #1	399.96	135°	LCPE	12"
INLET PIPE #2	N/A	N/A	N/A	N/A
OUTLET STUB	396.91	0°	LCPE	12"

ECCENTRIC REDUCER (BY CONTRACTOR)	YES/NO	SIZE
NO	N/A	N/A
ANTI-FLOTATION BALLAST	YES/NO	WIDTH HEIGHT
NO	N/A	12" 8"

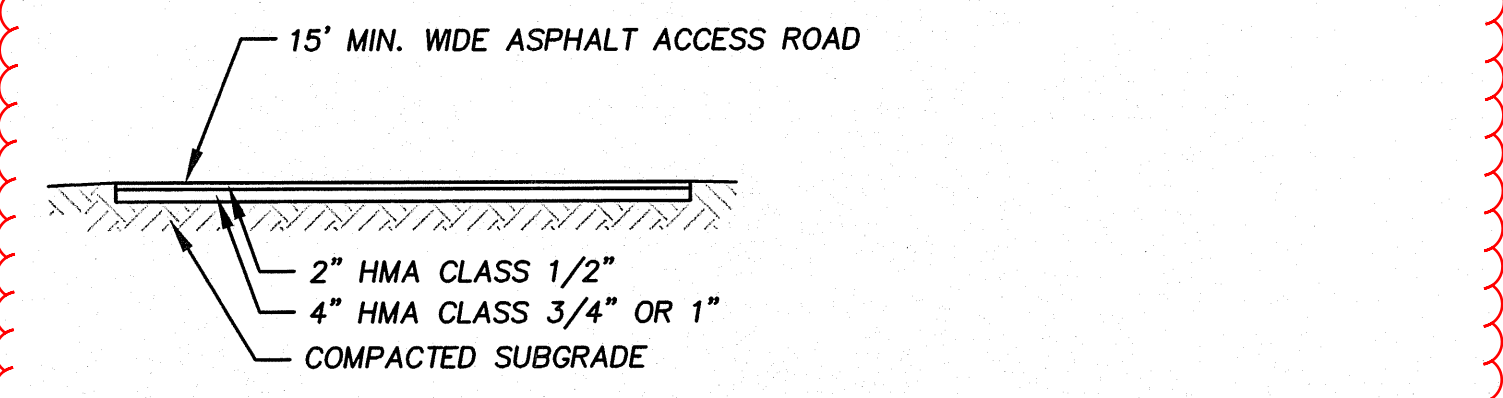
NOTES/SPECIAL REQUIREMENTS: PIPE ORIENTATION KEY:



STORMFILTER MANHOLE SF#1
NOT TO SCALE



RIP RAP OVERFLOW PATH
SCALE: 1"=5'



ASPHALT POND ACCESS ROAD
SCALE: 1"=5'

CALL 48 HOURS BEFORE YOU DIG
1-800-424-5555

R-337213

CHECKED FOR COMPLIANCE TO CITY STANDARDS	RECOMMENDED FOR APPROVAL
Date _____	BY: _____
Date _____	BY: _____
Date _____	BY: _____



15445 53RD AVE. S.
SEATTLE, WA 98188
PHONE: (206) 431-7970
FAX: (206) 388-1648
WEB SITE: PACENG.COM
PACENG.COM

Pacific Engineering Design, LLC
Civil Engineering and Planning Consultants

REEDSHAW PLAT
RENTON, WA

FOR LULIUS DEVELOPMENT INC.
16634 SE 49RD STREET
ISSAQUAH, WA 98027
PHONE: (425) 818-8829 FAX: (425) 818-8843

PROJECT NO.: 12007
DRAWN BY: VK/ENM
ISSUE DATE: 12/05/06
SHEET REV.: 08/09/2012

STORM LINE PLAN AND PROFILE THROUGH DETENTION POND

06085RD05-C13.DWG
C13
SHEET 13 OF 29