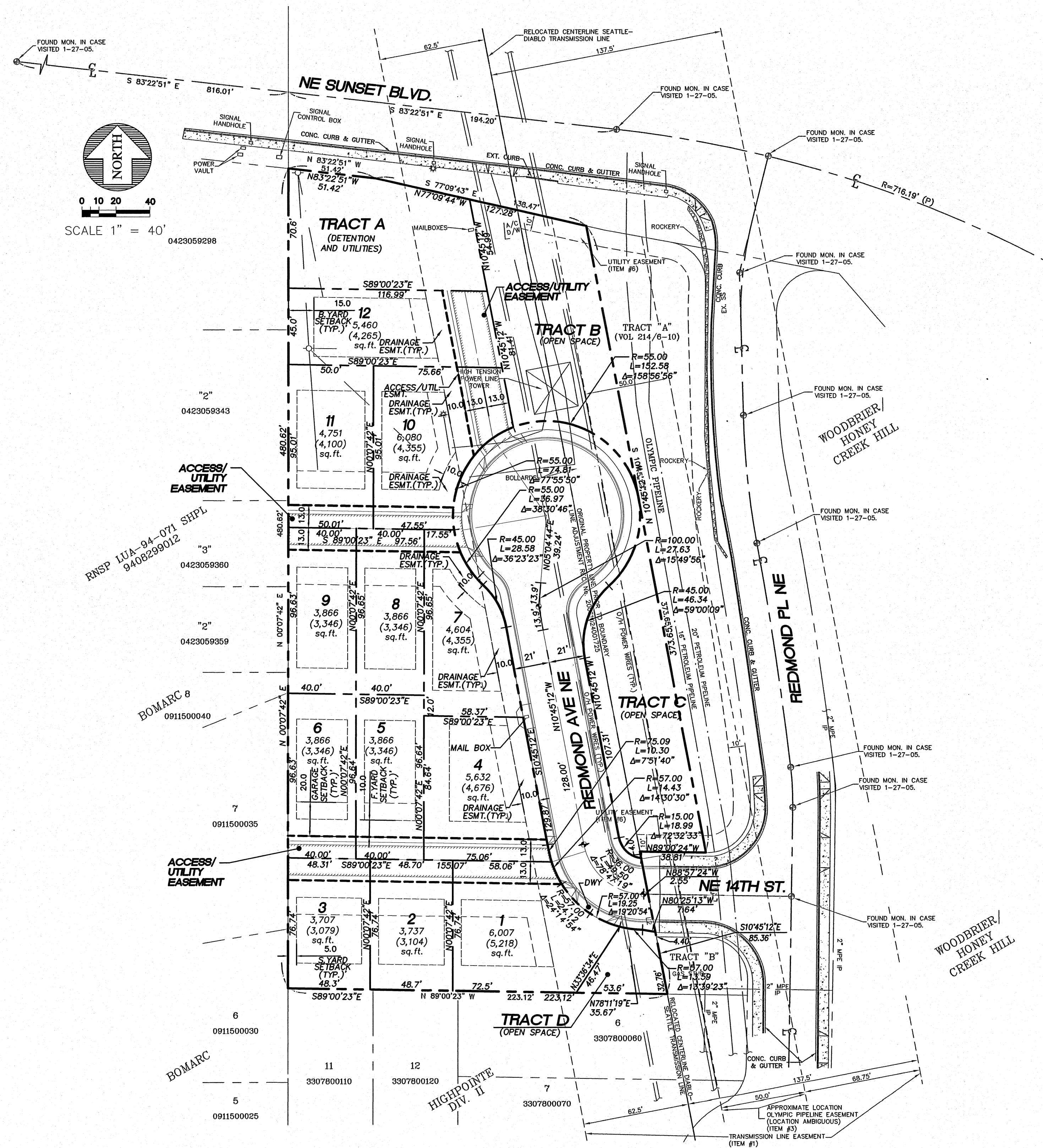
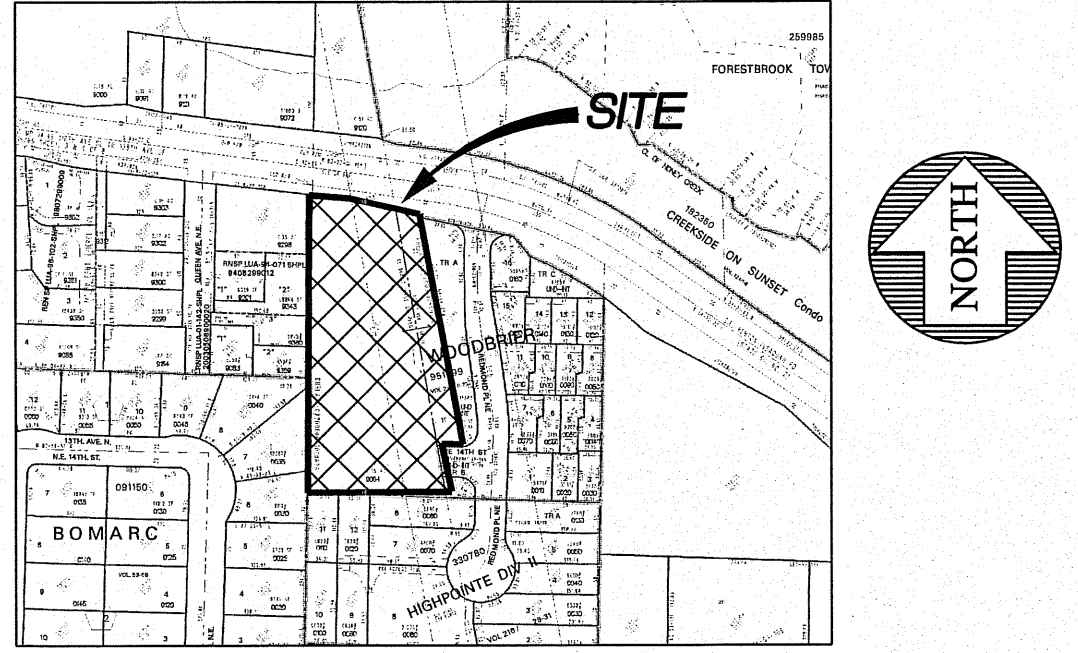


PORTION OF THE S.E. 1/4, S.E. 1/4, SECTION 4, TOWNSHIP 23 NORTH, RANGE 5 EAST, W.M.

DATE:	FILEBOOK:	PAGE:	DRAWING NO.:	SHEET	OF
			C05	5	29
PROJECT: REEDSHAW PLAT					
SUBJECT: HORIZONTAL CONTROL PLAN					
CITY OF RENTON					
SCALE: 1" = 40'					
SURVEYED: LEL					
DESIGNED: WK					
DRAWN: GAD					
CHECKED: LEL					
APPROVED: DATE					
BY DATE APPR					
PER CITY OF RENTON COMMENTS					
REVISION					
2					
NO.					



VICINITY MAP



BASIS OF BEARING

BASIS OF BEARINGS IS PLAT OF HIGHPOINTE DIVISION II (A.K.A. GREENFIELD II), VOL. 216 PG. 30 SITE AREA = 98082.67 S.F. OR 2.25 ACRES +/-

VERTICAL DATUM

VERTICAL DATUM: CITY OF RENTON (NAV88)

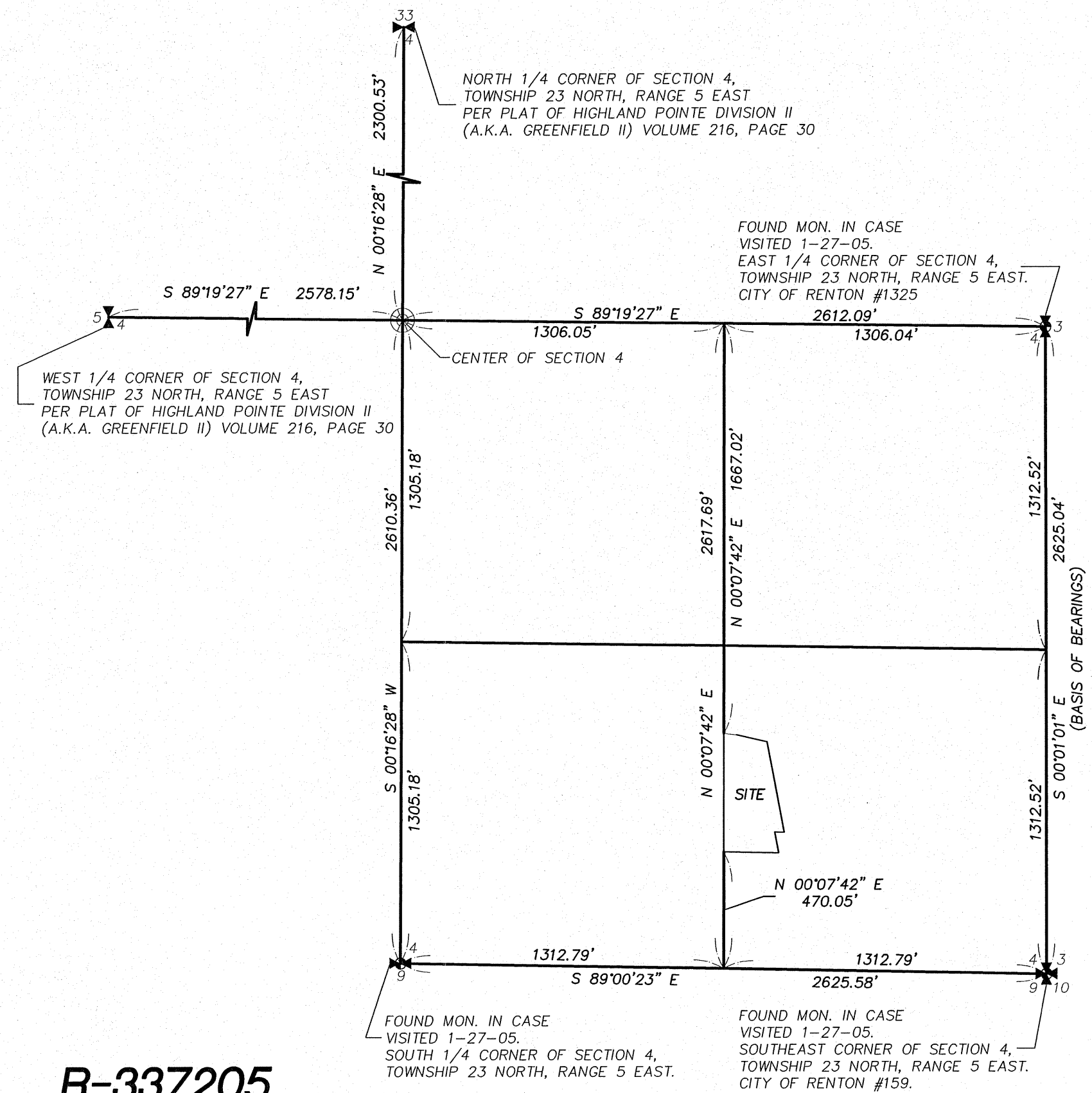
BENCHMARK

SITE BENCH MARK:

A 1-1/2" FLAT BRASS DISC WITH A PUNCH MARK ON A 4" X 4" CONCRETE POST MONUMENT DOWN 0.6' IN A MONUMENT CASE AT THE CONSTRUCTED INTERSECTION OF NE 12TH STREET AND UNION AVENUE NE. (CITY OF RENTON #159) ELEV. = 415.95'

LEGEND

- 2 LOT NUMBER
- 3,737 GROSS LOT AREA
- (3,104) NET LOT AREA OUTSIDE ACCESS EASEMENT
- 6 INSTALL MONUMENT



R-337205

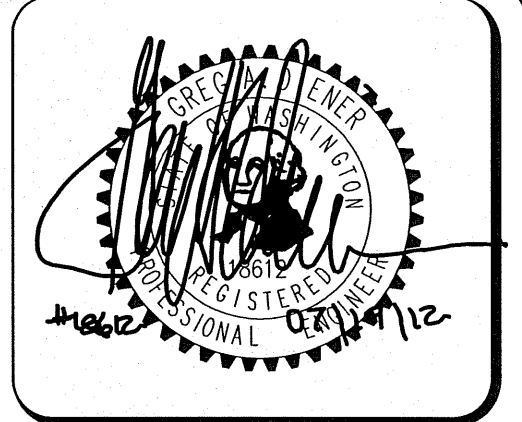
CALL 48 HOURS BEFORE YOU DIG
1-800-424-5555

CHECKED FOR COMPLIANCE TO CITY STANDARDS

Date _____
Date _____
Date _____

RECOMMENDED FOR APPROVAL

BY: _____
BY: _____



15445 53RD AVE. S.
SEATTLE, WA 98188
PHONE: (206) 431-7970
FAX: (206) 388-1648
WEB SITE: PACENG.COM

Pacific Engineering Design, LLC

Civil Engineering and Planning Consultants

REEDSHAW PLAT
RENTON, WA

FOR: CALLIDUS DEVELOPMENT INC.
16838 SE 49RD STREET
ISSAQUAH, WA 98027
PHONE: (425) 818-8829 FAX: (425) 818-8843

PROJECT NO.: 12007
DRAWN BY: WK
ISSUE DATE: 12/05/06
SHEET REV.: 07/19/2012

HORIZONTAL CONTROL PLAN

06085HC01-C05.DWG
C05
SHEET 5 OF 29