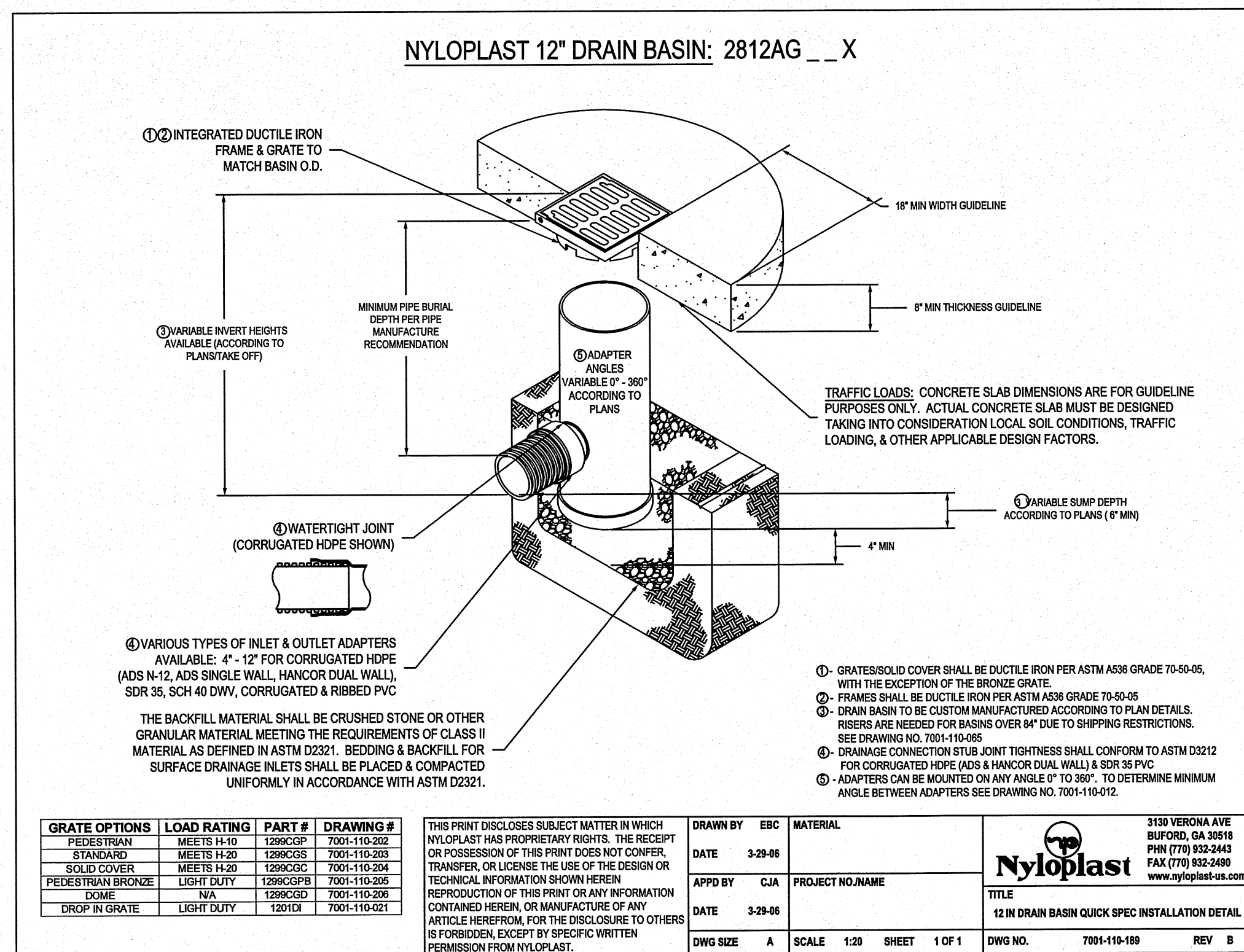
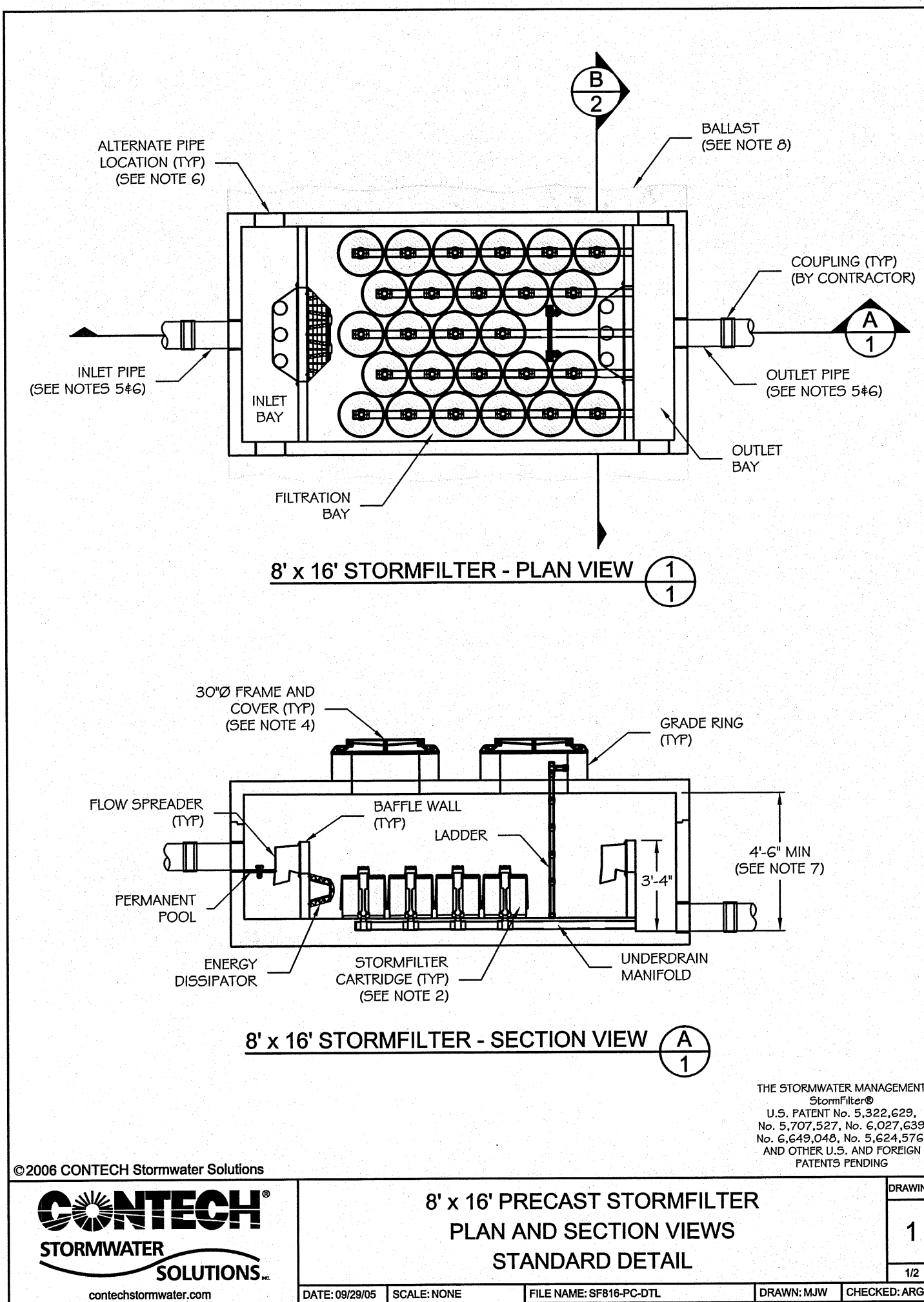


SW 1/4, SW 1/4 SEC. 20, T. 26 N., R. 5 E., W.M.



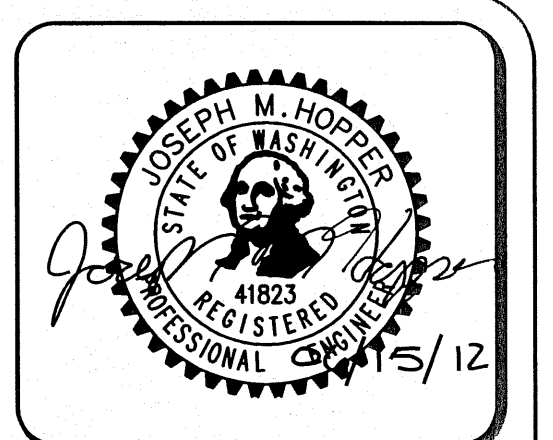
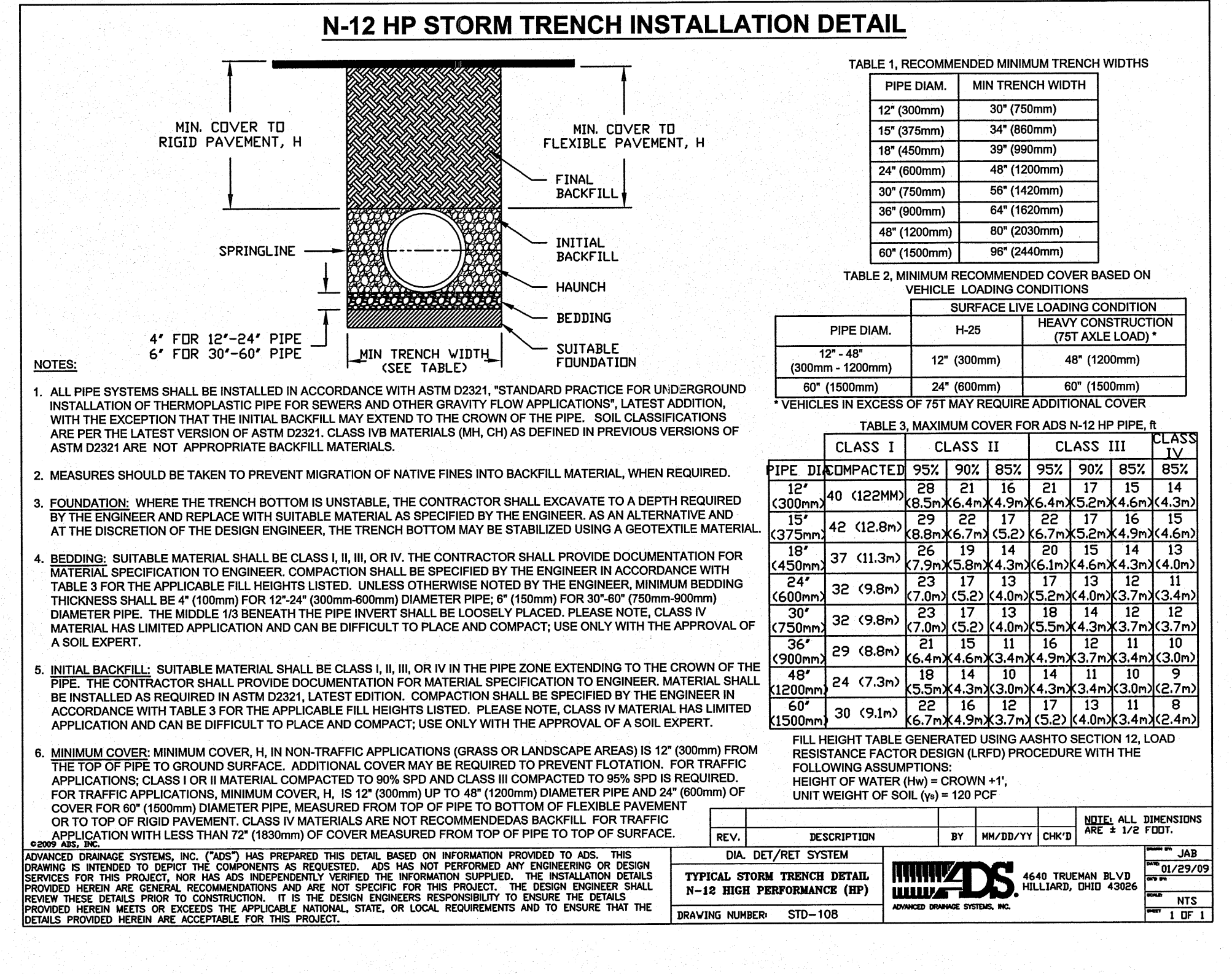
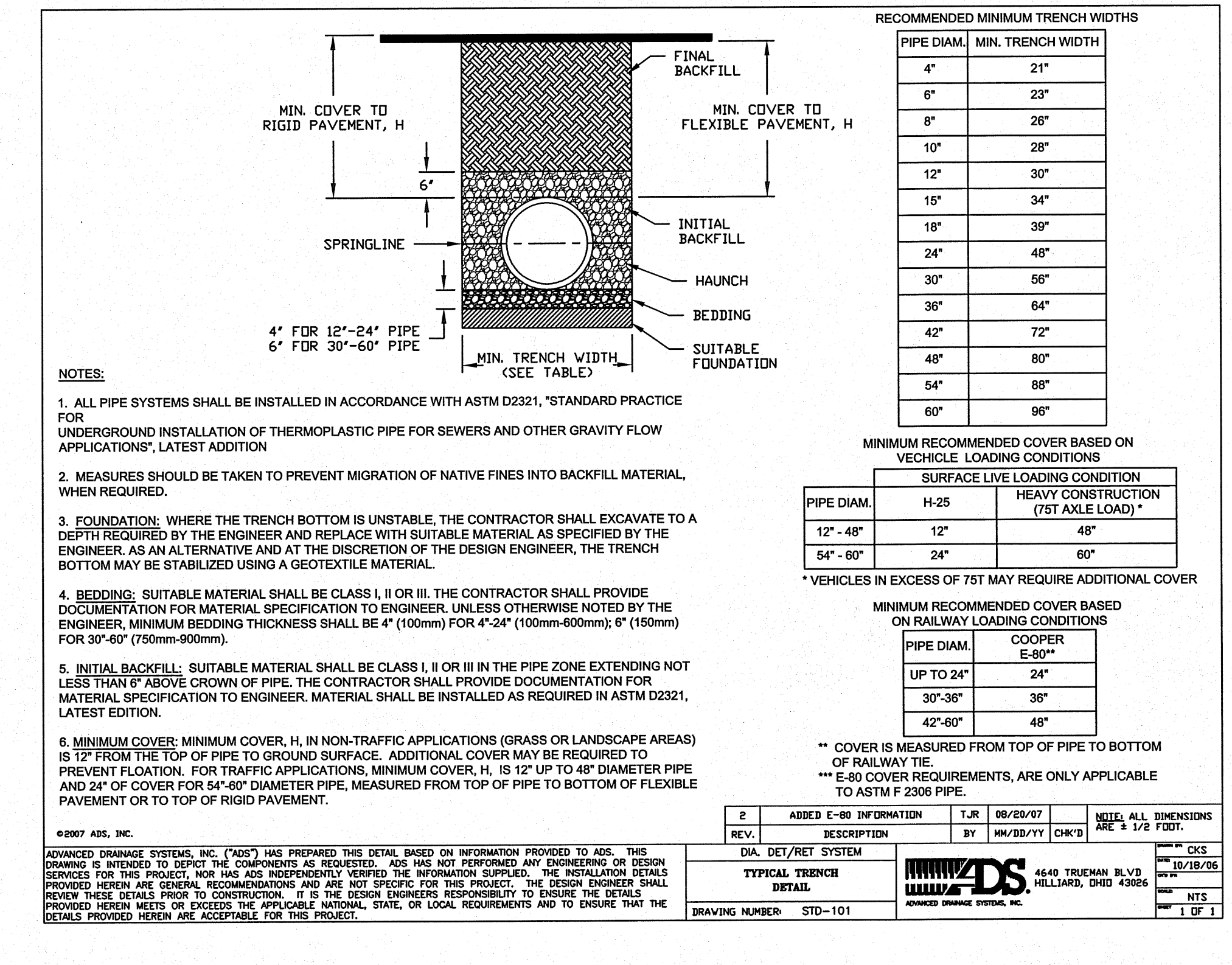
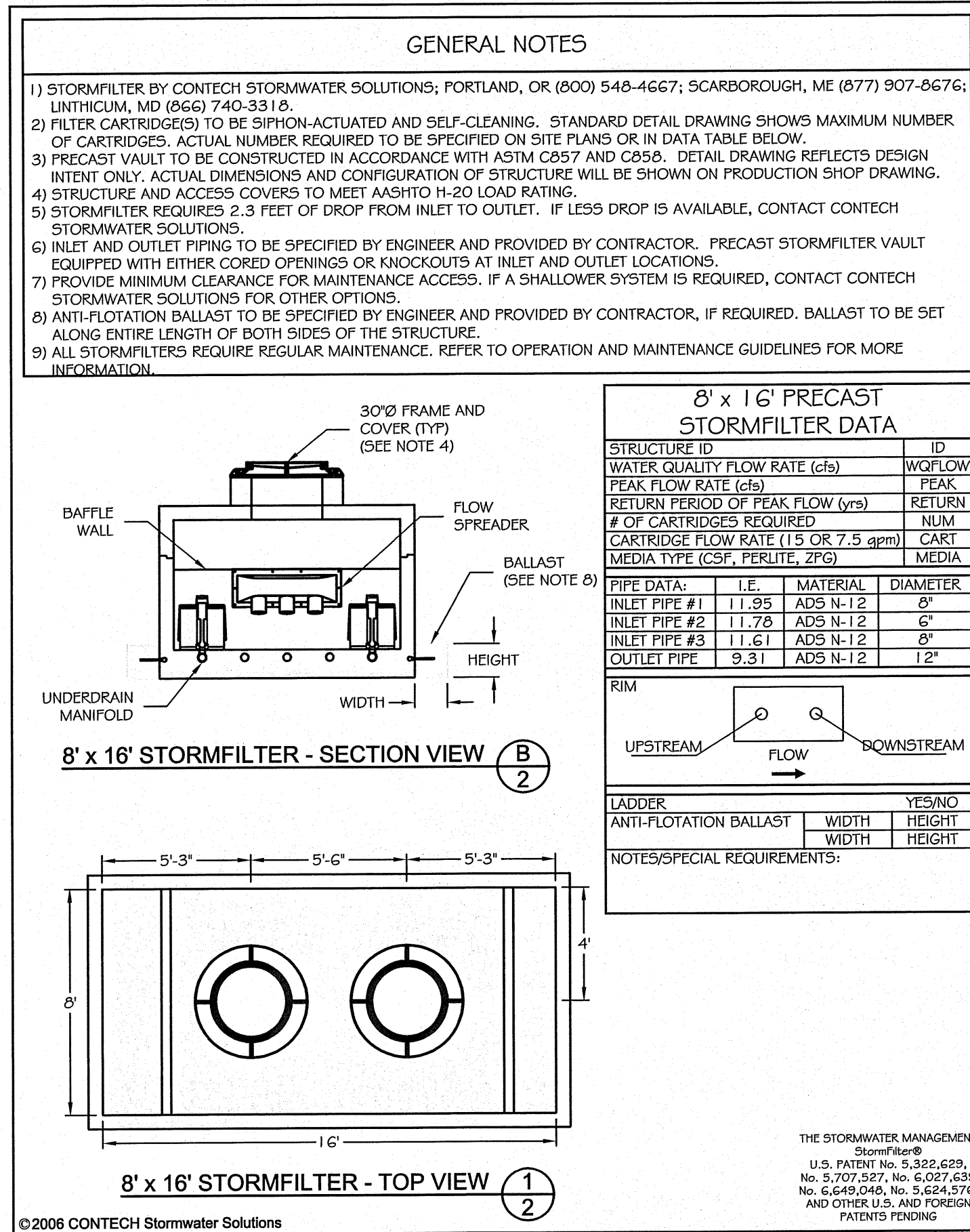
DATE	BY	DESCRIPTION
3-29-05	CJA	ISSUE FOR PERMIT
3-29-05	CJA	ISSUE FOR CONSTRUCTION

Nyloplast

3130 VERONA AVE
BURLINGAME, CA 94010
PH: (714) 932-2443
FAX: (714) 932-2440
www.nyloplast.com

THIS PRINT DISCLOSES SUBJECT MATTER IN WHICH NYLOPLAST HAS PROPRIETARY RIGHTS. THE RECEIPT OR POSSESSION OF THIS PRINT DOES NOT CONVEY, TRANSFER, OR LICENSE THE USE OF THE DESIGN OR TECHNICAL INFORMATION SHOWN HEREIN. REPRODUCTION OF THIS PRINT OR ANY INFORMATION CONTAINED HEREIN, OR MANUFACTURE OF ANY ARTICLE HEREFROM, FOR THE DISCLOSURE TO OTHERS IS FORBIDDEN, EXCEPT BY SPECIFIC WRITTEN PERMISSION FROM NYLOPLAST.

DATE: 3-10-00
APP'D BY: CJA
DATE: 3-10-00
DWG SIZE: A
SCALE: 1:1
SHEET: 1 OF 1
DWG NO.: 7001-110-011
REV: E



15445 53RD AVE. S.
SEATTLE, WA 98148
PHONE: (206) 431-7970
FAX: (206) 388-1648
WEB SITE: PACENG.COM

Pacific Engineering Design, LLC

Civil Engineering and Planning Consultants

CITY OF SEATTLE, WA

UPS - SEATTLE HUB

FOR: UNITED PARCEL SERVICE
4455 7TH AVE. S.
SEATTLE, WA 98108

PROJECT NO.: 11057
DRAWN BY: ENM
ISSUE DATE: 6/15/2012
SHEET REV.:

NOTES AND DETAILS

1105701.DWG
C06
SHEET 06 OF 08

PRELIMINARY