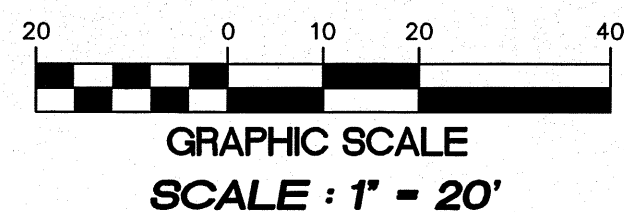
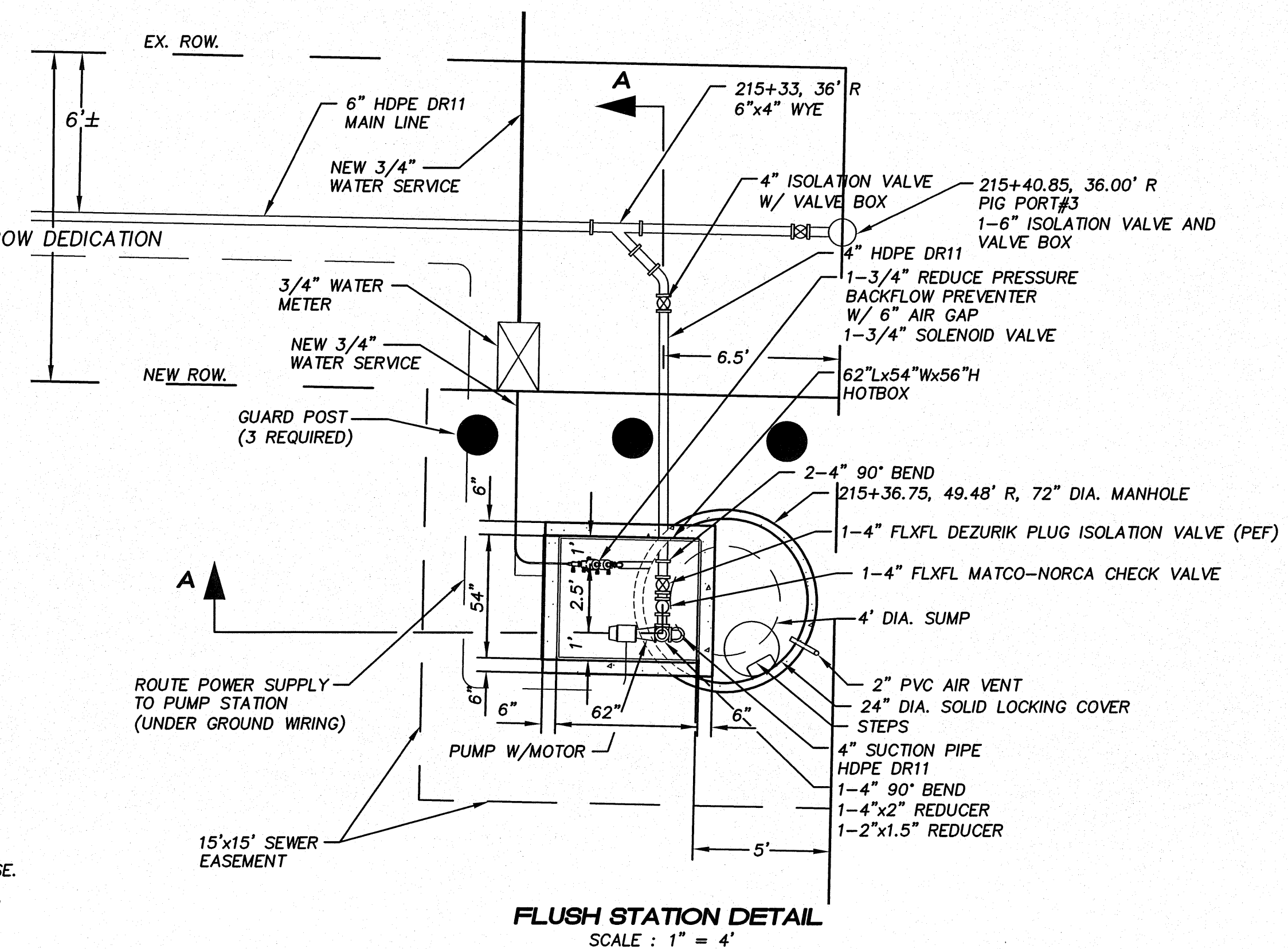


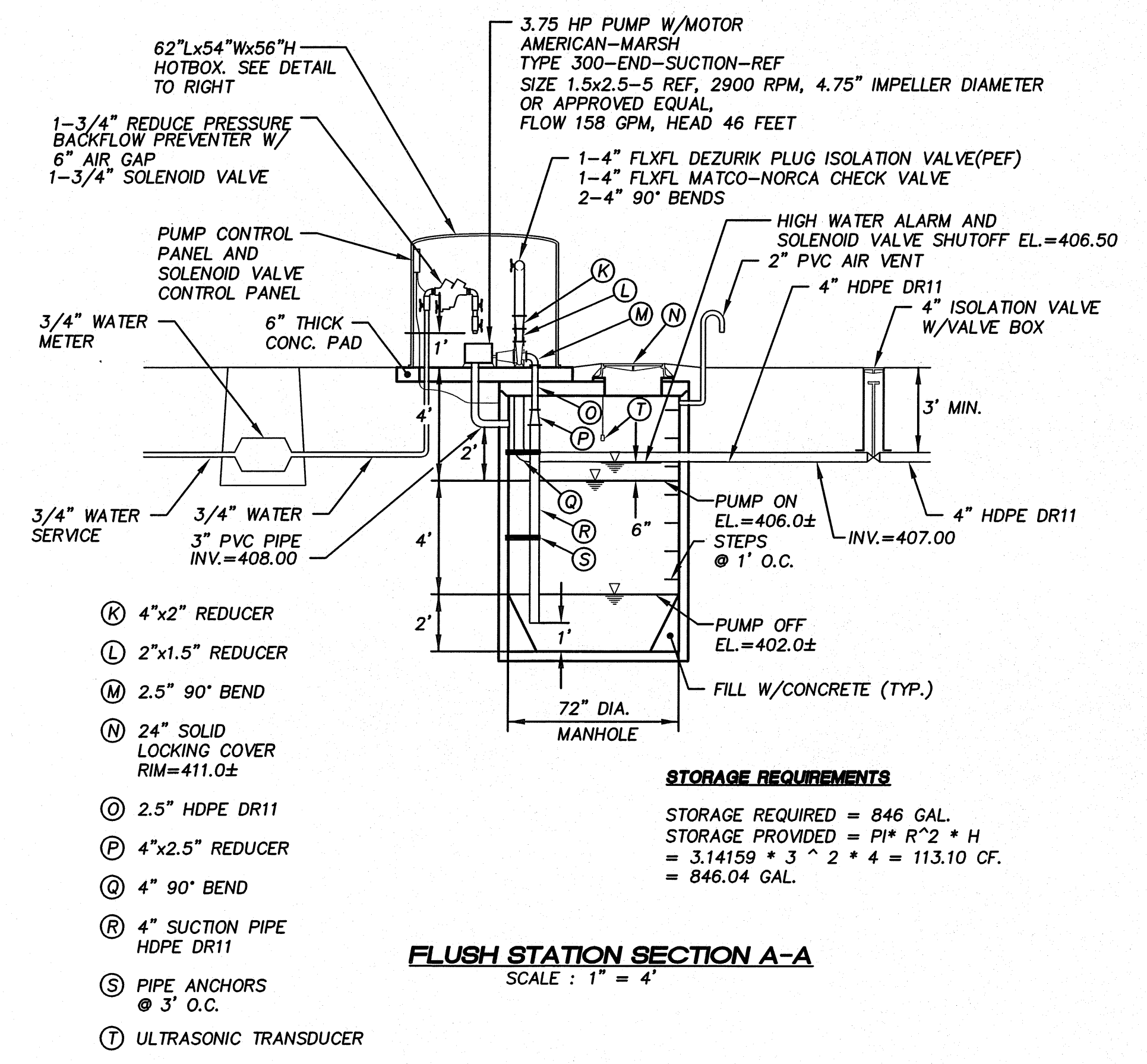
- (A) HOTBOX 62\"/>
- (B) FLUSHING PUMP STATION IN 72\"/>
- (C) GUARD POST (3 REQUIRED)
- (D) 45LF 3/4\"/>
- (E) 3/4\"/>
- (F) 6LF 3/4\"/>
- (G) ROUTE POWER SUPPLY TO PUMP STATION (UNDER GROUND WIRING)
- (H) 4\"/>
- (I) 8LF 4\"/>
- (J) INSTALL 8 LF 8\"/>
- (K) RELOCATE EX. POWER POLE BY OTHERS SEE RAM NIWAS CHURCH PLANS
- (L) NEW CONCRETE SIDEWALK WITH CURB AND GUTTER BY OTHERS SEE RAM NIWAS CHURCH PLANS
- (M) NEW ASPHALT PAVEMENT BY OTHERS SEE RAM NIWAS CHURCH PLANS
- (12A) 215+33, 36.00' R  
1-6\"/>
- (12) 215+40.85, 36.00' R  
1-6\"/>



N.W. 1/4, SEC. 26, T. 21 N., R. 4 E., W.M.



- SPECIAL NOTES:**
- CONNECT PUMP STATION TO POWER SUPPLY INSTALLED BY PSE.
  - CONTRACTOR SHALL COORDINATE WITH PSE PRIOR TO PRECON MEETING.
  - POWER METER SHALL BE VANDAL RESISTENT.
  - ALL HARDWARE INSIDE THE FLUSHING STATION MANHOLE SHALL BE 316 STAINLESS STEEL.
  - HDPE PIPE SHALL BE MINIMUM DR-11 AND DUCTILE IRON PIPE SHALL BE CL 52, W/PROTECTO 401 INTERIOR LINING.
  - ALL VALVES TO USE BUNA N RESILIENT SEATS.



300 SERIES REF FLEX-COUPLED END SUCTION PUMP ONLY

AMERICAN-MARSH PUMPS

PUMP SIZE	HALL DIMENSIONS ARE IN INCHES AND 0.03125"	NET FOR CONSTRUCTION UNLESS CERTIFIED BY ENGINEERING	HT	J	K1	K2	U	V	X	T	L	Y	Z							
1 1/4	2	7.500	10.500	14.188	4.500	2.750	3.875	5.000	0.625	0.563	0.563	2.000	3.875	1.938	0.875	0.250	1.000	1.438	5.500	3.125
1 1/2	2 1/2	8.250	10.800	14.188	4.500	2.750	3.875	5.000	0.625	0.563	0.563	2.000	3.875	1.938	0.875	0.250	1.000	1.438	5.500	3.125
2	2 1/2	9.438	12.000	14.188	5.250	2.750	3.875	5.000	0.625	0.563	0.563	2.000	3.875	1.938	0.875	0.250	1.000	1.438	6.313	3.375
2 1/2	3	11.000	10.500	14.375	6.250	3.750	4.313	6.375	0.625	0.563	0.563	2.500	4.375	2.000	0.875	0.250	1.000	1.438	7.000	3.375
1 1/4	2	7.8438	10.500	14.125	3.500	2.750	3.875	5.000	0.625	0.563	0.563	2.000	3.875	1.938	0.875	0.250	1.000	1.438	6.313	3.125
1 1/2	2 1/2	8.438	10.500	14.188	3.500	2.750	3.875	5.000	0.625	0.563	0.563	2.000	3.875	1.938	0.875	0.250	1.000	1.438	6.313	3.125
2	2 1/2	10.438	10.500	14.200	4.250	2.750	4.313	6.375	0.625	0.563	0.563	2.000	3.875	1.938	0.875	0.250	1.000	1.438	6.875	3.375
2 1/2	3	11.000	10.500	14.438	5.250	3.750	4.313	6.375	0.625	0.563	0.563	2.500	4.375	2.000	0.875	0.250	1.000	1.438	7.625	3.375
3	4	12.825	10.500	14.625	7.125	3.750	4.313	6.375	0.625	0.563	0.563	2.500	4.375	2.000	0.875	0.250	1.000	1.438	8.625	3.375
4	5	12.825	10.500	14.200	7.000	4.000	4.313	6.375	0.625	0.563	0.563	2.500	4.375	2.000	0.875	0.250	1.000	1.438	8.625	3.375
2 1/2	3	12.825	10.500	14.188	6.500	2.750	4.313	6.375	0.625	0.563	0.563	2.500	4.375	2.000	0.875	0.250	1.000	1.438	7.875	3.375
2 1/2	3	12.825	10.500	14.200	7.125	3.750	4.313	6.375	0.625	0.563	0.563	2.500	4.375	2.000	0.875	0.250	1.000	1.438	8.625	3.375
3	4	14.188	11.500	18.563	7.125	3.750	4.313	6.375	0.625	0.563	0.563	2.500	4.375	2.000	0.875	0.250	1.000	1.438	9.875	3.375
4	5	14.188	11.500	18.563	8.000	4.750	4.313	6.375	0.625	0.563	0.563	2.500	4.375	2.000	0.875	0.250	1.000	1.438	10.875	3.375
5	6	15.750	13.500	18.750	8.875	5.375	4.375	6.375	0.625	0.563	0.563	3.000	4.375	2.000	0.875	0.250	1.000	1.438	12.438	3.500
6	8	17.438	14.500	19.000	11.000	5.875	4.375	6.375	0.625	0.563	0.563	3.000	4.375	2.000	0.875	0.250	1.000	1.438	13.875	3.500
1 1/4	2	10.125	10.500	14.125	3.750	3.750	4.313	6.375	0.625	0.563	0.563	2.500	4.375	1.938	0.875	0.250	1.000	1.438	6.875	3.375
1 1/2	2 1/2	10.125	10.500	14.188	3.750	3.750	4.313	6.375	0.625	0.563	0.563	2.500	4.375	1.938	0.875	0.250	1.000	1.438	6.875	3.375
2	2 1/2	12.825	10.500	14.125	4.250	3.750	4.313	6.375	0.625	0.563	0.563	2.500	4.375	1.938	0.875	0.250	1.000	1.438	7.625	3.375
2 1/2	3	14.188	11.500	18.500	5.000	4.750	4.313	6.375	0.625	0.563	0.563	3.125	4.375	1.938	0.875	0.250	1.000	1.438	8.625	3.375
3	4	15.750	13.500	18.563	6.375	4.750	4.313	6.375	0.625	0.563	0.563	3.125	4.375	1.938	0.875	0.250	1.000	1.438	9.625	3.375
4	5	15.750	13.500	18.563	7.000	4.750	4.375	6.375	0.625	0.563	0.563	3.125	4.375	1.938	0.875	0.250	1.000	1.438	10.625	3.375
5	6	15.750	13.500	18.563	8.000	4.750	4.375	6.375	0.625	0.563	0.563	3.125	4.375	1.938	0.875	0.250	1.000	1.438	11.625	3.375
6	8	17.438	14.500	18.563	8.875	4.750	4.375	6.375	0.625	0.563	0.563	3.125	4.375	1.938	0.875	0.250	1.000	1.438	12.625	3.375
8	10	17.438	14.500	19.000	10.875	5.375	4.375	6.375	0.625	0.563	0.563	3.125	4.375	1.938	0.875	0.250	1.000	1.438	13.625	3.375
10	12	21.888	15.313	19.438	11.000	5.875	4.375	6.375	0.625	0.563	0.563	3.375	4.375	1.938	0.875	0.250	1.000	1.438	15.000	3.500
1 1/2	2 1/2	13.125	17.500	18.563	6.000	3.750	4.313	11.000	0.750	0.563	0.563	2.500	4.375	1.938	0.875	0.250	1.000	1.438	11.000	4.000
2	2 1/2	13.125	17.500	18.563	6.000	3.750	4.313	11.000	0.750	0.563	0.563	2.500	4.375	1.938	0.875	0.250	1.000	1.438	11.000	4.000
3	4	13.750	13.500	18.375	6.875	4.750	4.375	12.438	0.625	0.750	0.563	3.125	4.313	1.125	0.313	1.063	1.938	11.000	4.438	
4	5	13.750	13.500	18.563	7.875	4.750	4.375	12.438	0.625	0.750	0.563	3.125	4.313	1.125	0.313	1.063	1.938	11.000	4.875	
5	6	15.750	13.500	18.563	8.875	4.750	4.375	12.438	0.625	0.750	0.563	3.125	4.313	1.125	0.313	1.063	1.938	11.000	5.313	
6	8	17.438	14.500	18.563	9.875	4.750	4.375	12.438	0.625	0.750	0.563	3.125	4.313	1.125	0.313	1.063	1.938	11.000	5.750	
8	10	19.438	14.500	18.563	11.000	5.375	4.375	12.438	0.625	0.750	0.563	3.125	4.313	1.125	0.313	1.063	1.938	11.000	6.188	
10	12	21.888	14.500	18.563	12.000	5.875	4.375	12.438	0.625	0.750	0.563	3.125	4.313	1.125	0.313	1.063	1.938	11.000	6.625	
1 1/2	2 1/2	13.125	17.500	18.563	6.000	3.750	4.313	11.000	0.750	0.563	0.563	2.500	4.375	1.938	0.875	0.250	1.000	1.438	11.000	4.000
2	2 1/2	13.125	17.500	18.563	6.000	3.750	4.313	11.000	0.750	0.563	0.563	2.500	4.375	1.938	0.875	0.250	1.000	1.438	11.000	4.000
3	4	13.750	13.500	18.375	6.875	4.750	4.375	12.438	0.625	0.750	0.563	3.125	4.313	1.125	0.313	1.063	1.938	11.000	4.438	
4	5	13.750	13.500	18.563	7.875	4.750	4.375	12.438	0.625	0.750	0.563	3.125	4.313	1.125	0.313	1.063	1.938	11.000	4.875	
5	6	15.750	13.500	18.563	8.875	4.750	4.375	12.438	0.625	0.750	0.563	3.125	4.313	1.125	0.313	1.063	1.938	11.000	5.313	
6	8	17.438	14.500	18.563	9.875	4.750	4.375	12.438	0.625	0.750	0.563	3.125	4.313	1.125	0.313	1.063	1.938	11.000	5.750	
8	10	19.438	14.500	18.563	11.000	5.375	4.375	12.438	0.625	0.750	0.563	3.125	4.313	1.125	0.313	1.063	1.938	11.000	6.188	
10	12	21.888	14.500	18.563	12.000	5.875	4.375	12.438	0.625	0.750	0.563	3.125	4.313	1.125	0.313	1.063	1.938	11.000	6.625	
12	14	24.375	15.250	19.000	13.000	6.375	4.375	12.438	0.625	0.750	0.563	3.125	4.313	1.125	0.313	1.063	1.938	11.000	7.063	
14	16	27.000	16.250	19.000	14.000	6.875	4.375	12.438	0.625	0.750	0.563	3.125	4.313	1.125	0.313	1.063	1.938	11.000	7.500	
16	18	29.625	17.250	19.000	15.000	7.375	4.375	12.438	0.625	0.750	0.563	3.125	4.313	1.125	0.313	1.063	1.938	11.000	7.938	
18	20	32.250	18.250	19.000	16.000	7.875	4.375	12.438	0.625	0.750	0.563	3.125	4.313	1.125	0.313	1.063	1.938	11.000	8.375	
20	22	34.875	19.250	19.000	17.000	8.375	4.375	12.438	0.625	0.750	0.563	3.125	4.313	1.125	0.313	1.063	1.938	11.000	8.813	
22	24	37.500	20.250	19.000	18.000	8.875	4.375	12.438	0.625	0.750	0.563	3.125	4.313	1.125	0.313	1.063	1.938	11.000	9.250	
24	26	40.125	21.250	19.000	19.000	9.375	4.375													