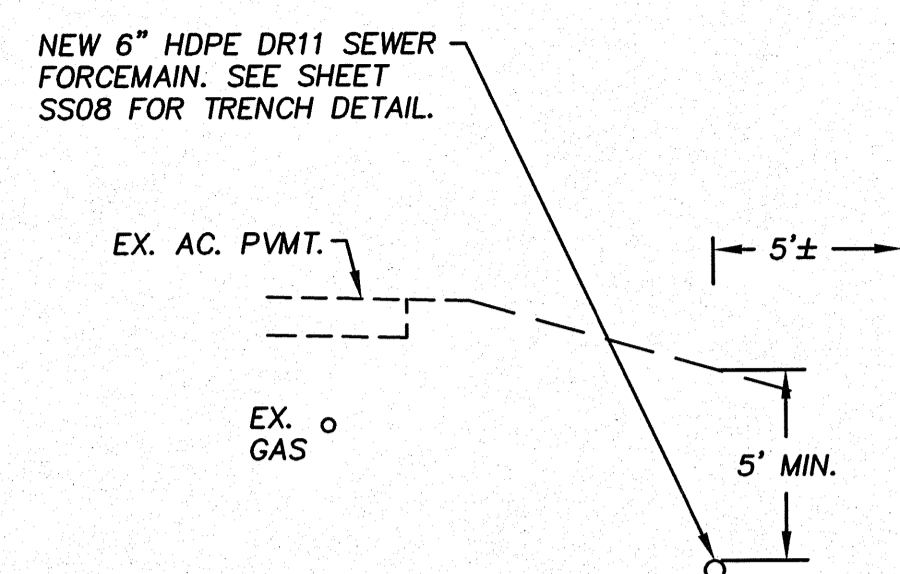
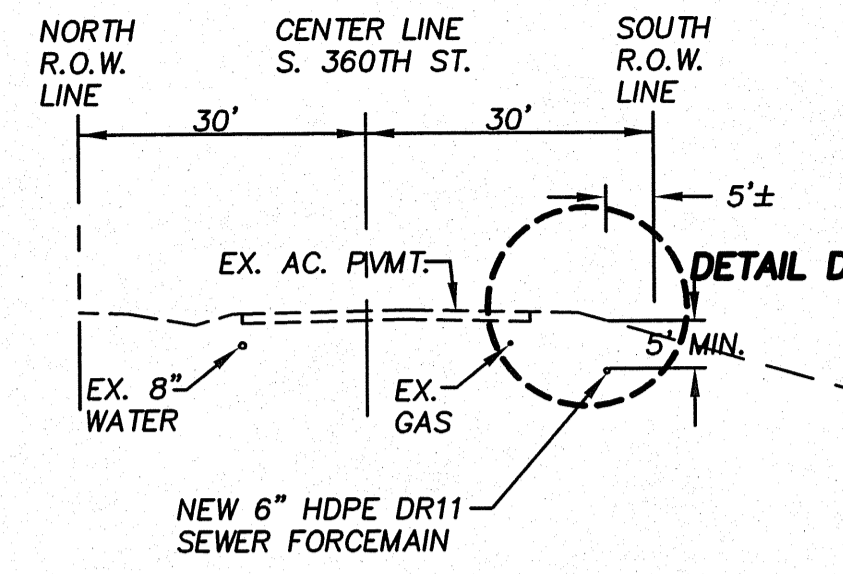
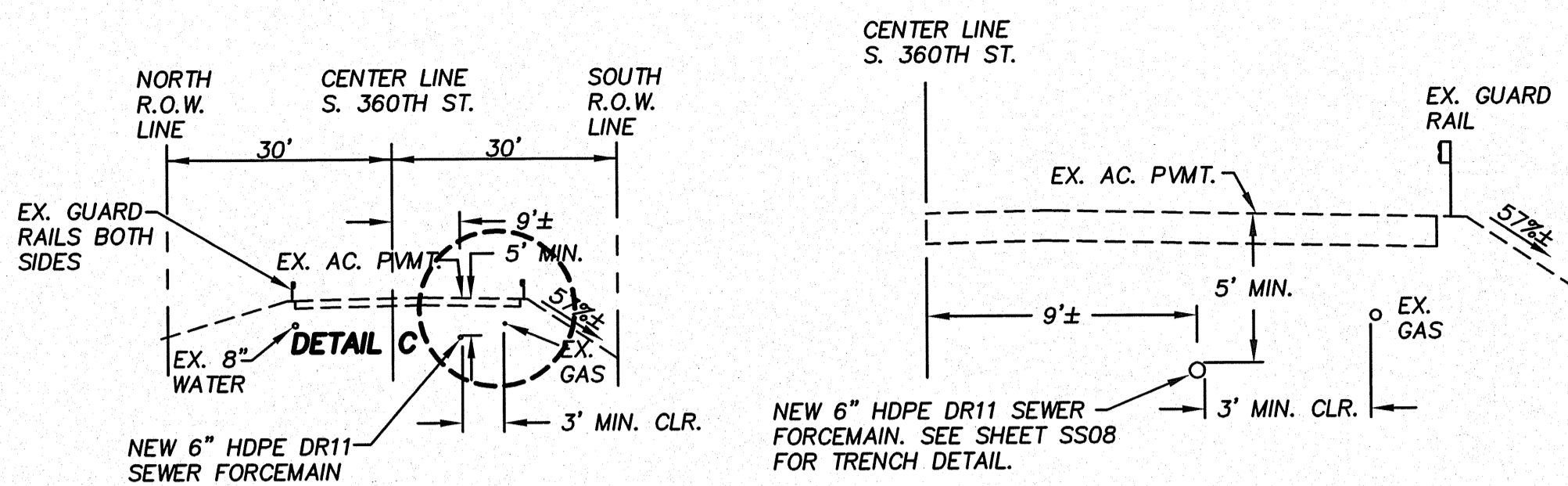


N.W. 1/4, SEC. 26, T. 21 N., R. 4 E., W.M.

- 7 ISOLATION VALVE W/TRACER WIRE STATION SEE SHEET SS04
- 8 1-6" ISOLATION GATE VALVE W/BOX
- 8A 1-1/2" WASTEWATER AIR RELEASE VALVE SEE SHEET SS08 FOR DETAIL
- 9 2-6" ISOLATION GATE VALVE W/ BOX  
1-6" FORCE MAIN CLEANOUT W/PIG PORT #2  
1-6" HDPE DR 11 SPOOL, SEE SHEET SS08 FOR DETAIL
- 1 MAINTAIN 3' HORIZONTAL CLEARANCE BETWEEN THE 6" SEWER FORCEMAIN, THE EXISTING POWER POLE AND THE EXISTING GAS LINE.



SOUTH R.O.W. LINE

0 Water Plan       $\theta$  Sewer Plan

Dated \_\_\_\_\_

**APPROVED FOR CONSTRUCTION**  
SUBJECT TO CHANGES NOTED

The District's review is not a check of any dimension or quantities and will not relieve the Developer from responsibility for errors of any sort. No changes shall be made in the plans except by the consent of the District.

General Manager/District Engineer \_\_\_\_\_ Date \_\_\_\_\_

This construction plan will expire one year from plan approval date, if construction has not commenced.

**VERTICAL DATUM:**

NAVD 88

**BENCH MARK:**

KING COUNTY SURVEY CONTROL POINT No. 6905, SW CORNER OF SECTION 27, T 24 N, R 4 E, W.M. CONCRETE MONUMENT WITH LEAD AND BRASS TACK, SET 1.2 FEET BELOW GRADE, IN STANDARD KC MON. CASE.

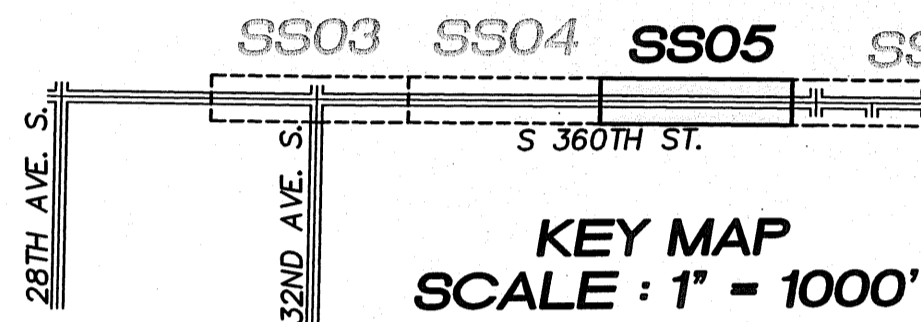
ELEVATION = 367.06

$\Delta$  SECTION C-C  
SCALE: 1" = 20'

$\Delta$  DETAIL C  
SCALE: 1" = 5'

$\Delta$  SECTION D-D  
SCALE: 1" = 20'

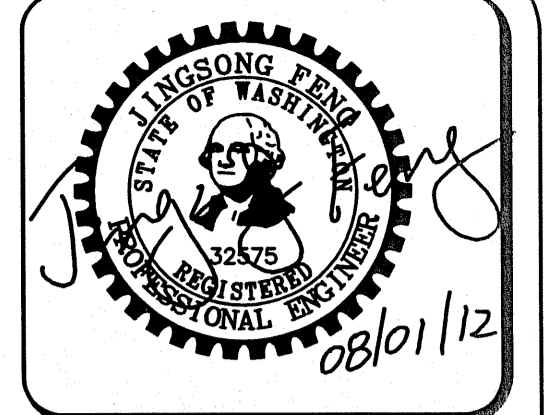
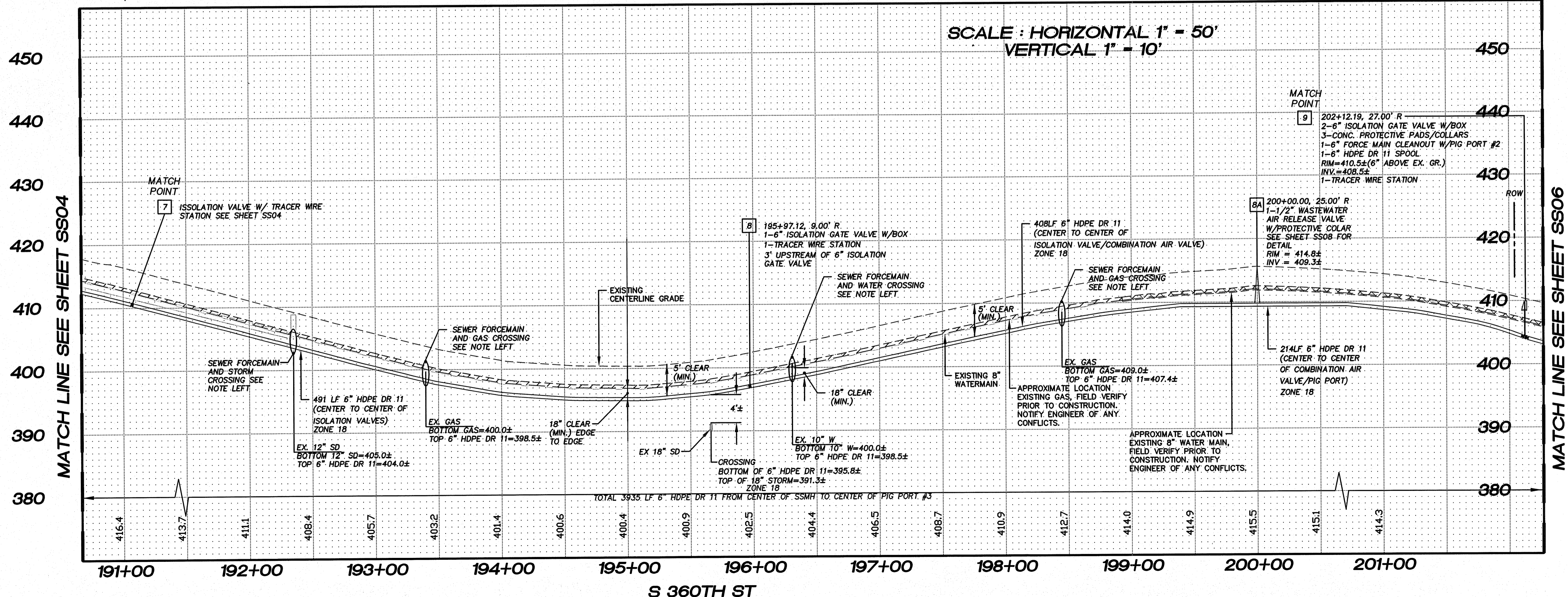
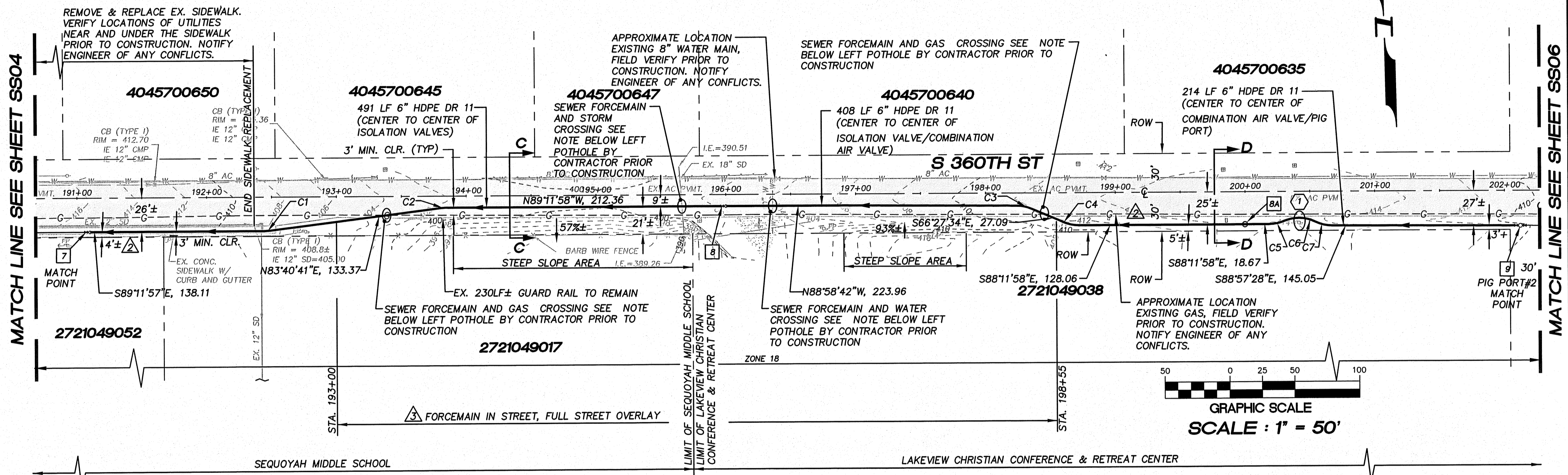
$\Delta$  DETAIL D  
SCALE: 1" = 5'



| CURVE NO. | R   | DELTA ANGLE | L      | PC STATION | OFFSET  | PT STATION | OFFSET  |
|-----------|-----|-------------|--------|------------|---------|------------|---------|
| C1        | 30' | 77°21"      | 3.73'  | 192+44.98  | 26.00'R | 192+48.70  | 25.77'R |
| C2        | 30' | 77°21"      | 3.73'  | 193+81.04  | 9.23'R  | 193+84.76  | 9.00'R  |
| C3        | 30' | 22°22'30"   | 11.72' | 198+24.08  | 9.86'R  | 198+35.49  | 12.20'R |
| C4        | 30' | 22°30'00"   | 11.78' | 198+60.47  | 22.67'R | 198+71.94  | 25.00'R |
| C5        | 30' | 22°22'46"   | 11.72' | 200+18.68  | 25.00'R | 200+30.10  | 22.74'R |
| C6        | 30' | 47°48'54"   | 25.04' | 200+30.10  | 22.74'R | 200+54.40  | 23.39'R |
| C7        | 30' | 25°7'57"    | 13.16' | 200+54.40  | 23.39'R | 200+67.13  | 26.30'R |
| C8        | 30' | 16°38'52"   | 8.72'  | 202+41.39  | 27.00'R | 202+49.99  | 25.74'R |
| C9        | 30' | 33°17'43"   | 17.43' | 202+49.99  | 25.74'R | 202+67.18  | 25.74'R |
| C10       | 30' | 16°38'51"   | 8.72'  | 202+67.18  | 25.74'R | 202+75.77  | 27.00'R |
| C11       | 30' | 27°27'56"   | 14.38' | 206+27.56  | 27.00'R | 206+41.39  | 23.62'R |
| C12       | 30' | 50°27'6"    | 26.42' | 206+41.39  | 23.62'R | 206+66.94  | 22.62'R |
| C13       | 30' | 22°59'10"   | 12.04' | 206+66.94  | 22.62'R | 206+78.66  | 25.00'R |
| C14       | 30' | 22°30'0"    | 11.78' | 210+82.71  | 25.00'R | 210+94.19  | 27.28'R |
| C15       | 30' | 22°30'0"    | 11.78' | 211+09.73  | 33.72'R | 211+21.21  | 36.00'R |

**NOTES:**

- THE MINIMUM SEPARATION BETWEEN (PARALLEL PIPELINES) WATER MAIN, WATER SERVICE LINE AND PRESSURE SEWER FACILITIES (MUST BE BELOW WATER MAIN OR WATER SERVICE) MUST BE MET, ARE AS FOLLOWS: HORIZONTAL  $\geq$ 10' MEASURED EDGE TO EDGE VERTICAL  $\geq$ 18", MEASURED EDGE TO EDGE.
- THE MINIMUM SEPARATION BETWEEN (CROSSING PIPELINES) WATER MAIN, WATER SERVICE LINE AND PRESSURE SEWER FACILITIES (MUST BE BELOW WATER MAIN OR WATER SERVICE) MUST BE MET, ARE AS FOLLOWS: VERTICAL  $\geq$ 18" MEASURED EDGE TO EDGE.
- IF THE EXISTING WATER IS AC PIPE, IT SHALL BE REPLACED WITH SAME SIZE DUCTILE IRON PIPE NO LESS THAN 2 FEET INTO BOTH TRENCH WALLS (NO CDF CRADLE ALLOWED).
- LOCATION OF EXISTING UNDERGROUND UTILITIES WAS PROVIDED BY UTILITY LOCATE AND BY AS BUILT RECORDS. UTILITY PAINT MARKS WERE FIELD SURVEYED BY CES NW INC.
- OTHER UTILITY SEPARATION BETWEEN PRESSURE SEWER FACILITIES MUST BE MET, ARE AS FOLLOWS: HORIZONTAL  $\geq$ 3' MEASURED EDGE TO EDGE VERTICAL  $\geq$ 6", MEASURED EDGE TO EDGE.
- FOR PARCELS IN PEPPER HILL ESTATES AREAS, EXISTING PARCEL NUMBERS AND LOT NUMBERS WILL BE UPDATED AFTER BOUNDARY LINE ADJUSTMENTS ARE RECORDED.
- ALL CLEANOUTS W/PIG PORTS ARE USED AS TRACE WIRE STATIONS.
- FRAMES AND COVERS FOR CLEANOUTS/PIGPORTS NOT SUBJECT TO VEHICULAR TRAFFIC SHALL BE SET 6" ABOVE FINISHED GRADE AND BE PROTECTED BY VALVE BOX PROTECTIVE PADS.
- TRACER WIRES ARE REQUIRED FOR BOTH THE 6" LPS LINES. THE WIRES SHOULD BE TAGGED OR LABELED IN EACH TRACER WIRE STATION. THE TAGS SHOULD BE STAINLESS OR OTHER NON RUSTING METAL.



15445 59RD AVE. S.  
SEATTLE, WA 98188  
PHONE: (206) 431-7970  
FAX: (206) 388-1648  
WEB SITE: PACENG.COM

Pacific  
Engineering  
Design, LLC

Civil Engineering and  
Planning Consultants

LAKEHAVEN UTILITY DISTRICT PROJECT NO. 6308021  
RAM NAWAS CHURCH  
KING COUNTY, WA.

FOR: SARKAR HOLDINGS, L.L.C.  
27502 36TH AVENUE SOUTH  
AUBURN, WA 98001

PROJECT NO.: 10021  
DRAWN BY: JGC  
ISSUE DATE: 7-23-2010  
SHEET REV.: 08-01-2012

FORCE MAIN  
SANITARY SEWER  
S 360TH ST  
STA. 191+07.00 TO  
STA. 200+92.19  
PLAN AND PROFILE

05052SS02-SS02-SS06.DWG

**SS05**