

N.W. 1/4, SEC. 26, T. 21 N., R. 4 E., W.M.

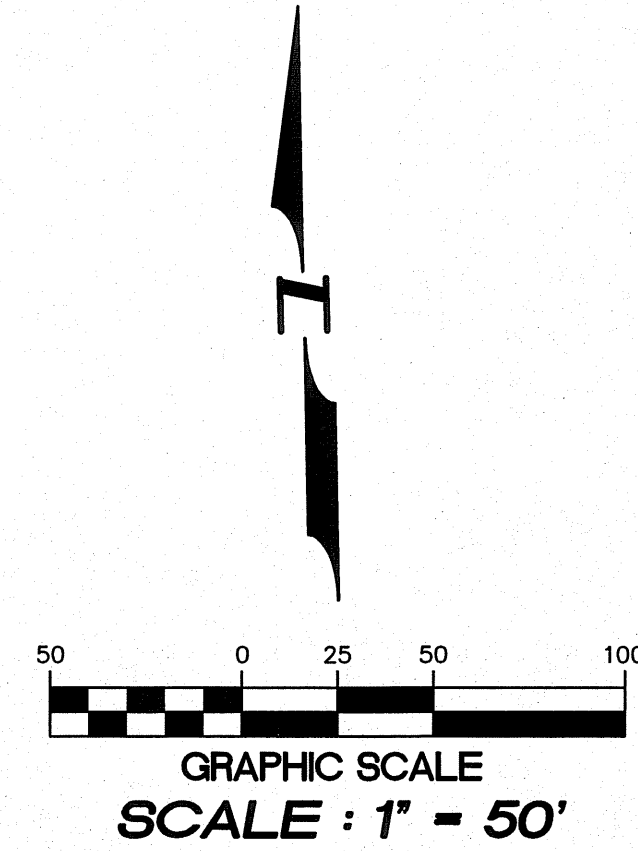
- 1 SSMH #3 (LAKELAND ELEMENTARY SCHOOL IMPROVEMENTS CS.20, LUD PROJECT NUMBER 6309007 RECORD DRAWING S1725)
- 2 1-6" HDPE DR 11 45° BEND (FLXMJ)
- 3 1-6" HDPE DR 11 45° BEND (MJXFL)
- 5 1-6" ISOLATION GATE VALVE W/BOX
- 1 REPLACE EX. 12" A.C. WATER, INSTALL 8 LF 12" D.I. CL50 WATER 2 FEET INTO TRENCH WALLS
- 2 CROSSINGS BETWEEN 6" SEWER FORCEMAIN AND EXISTING GAS AND EXISTING 12" STORM

**VERTICAL DATUM :**

NAVD 88

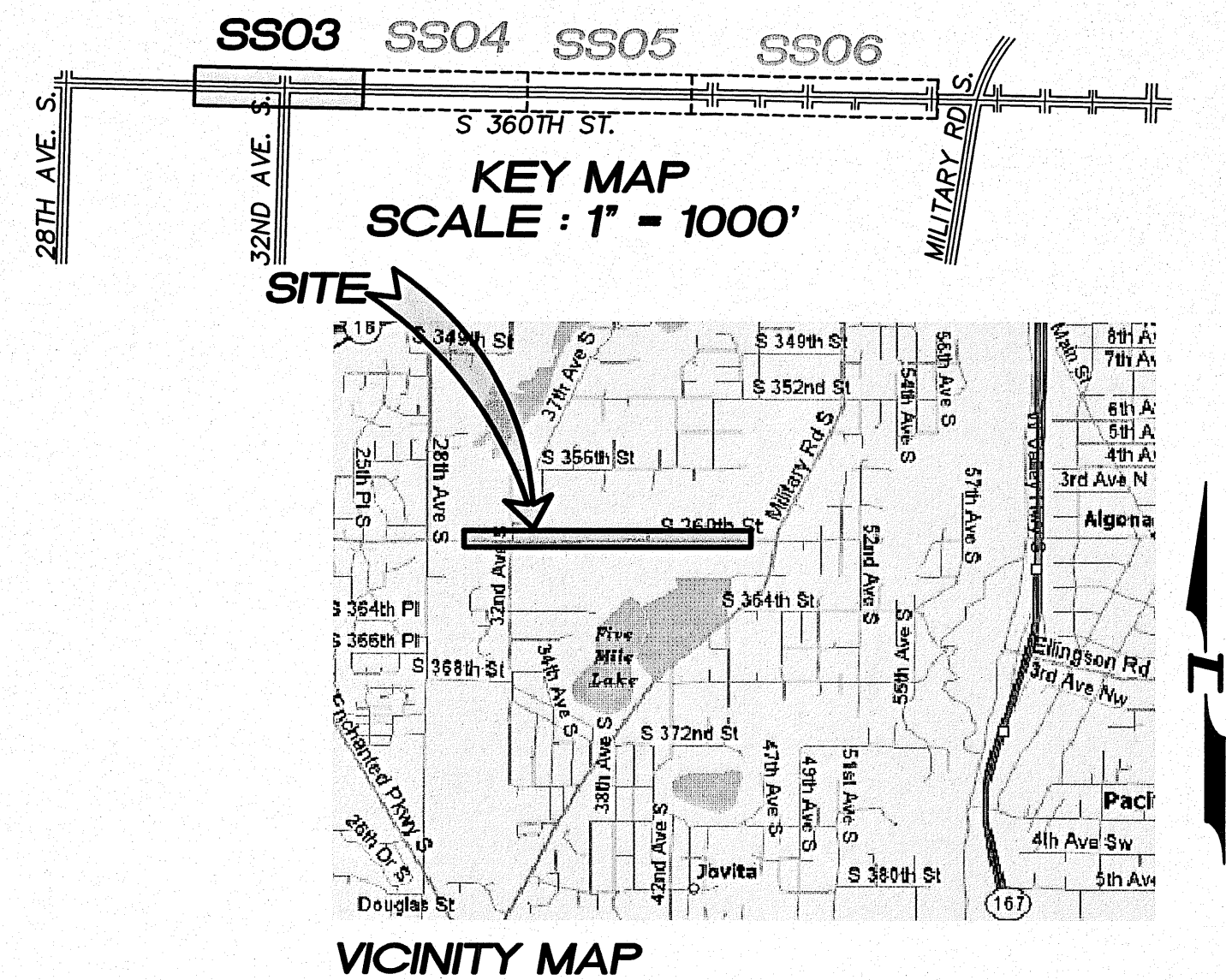
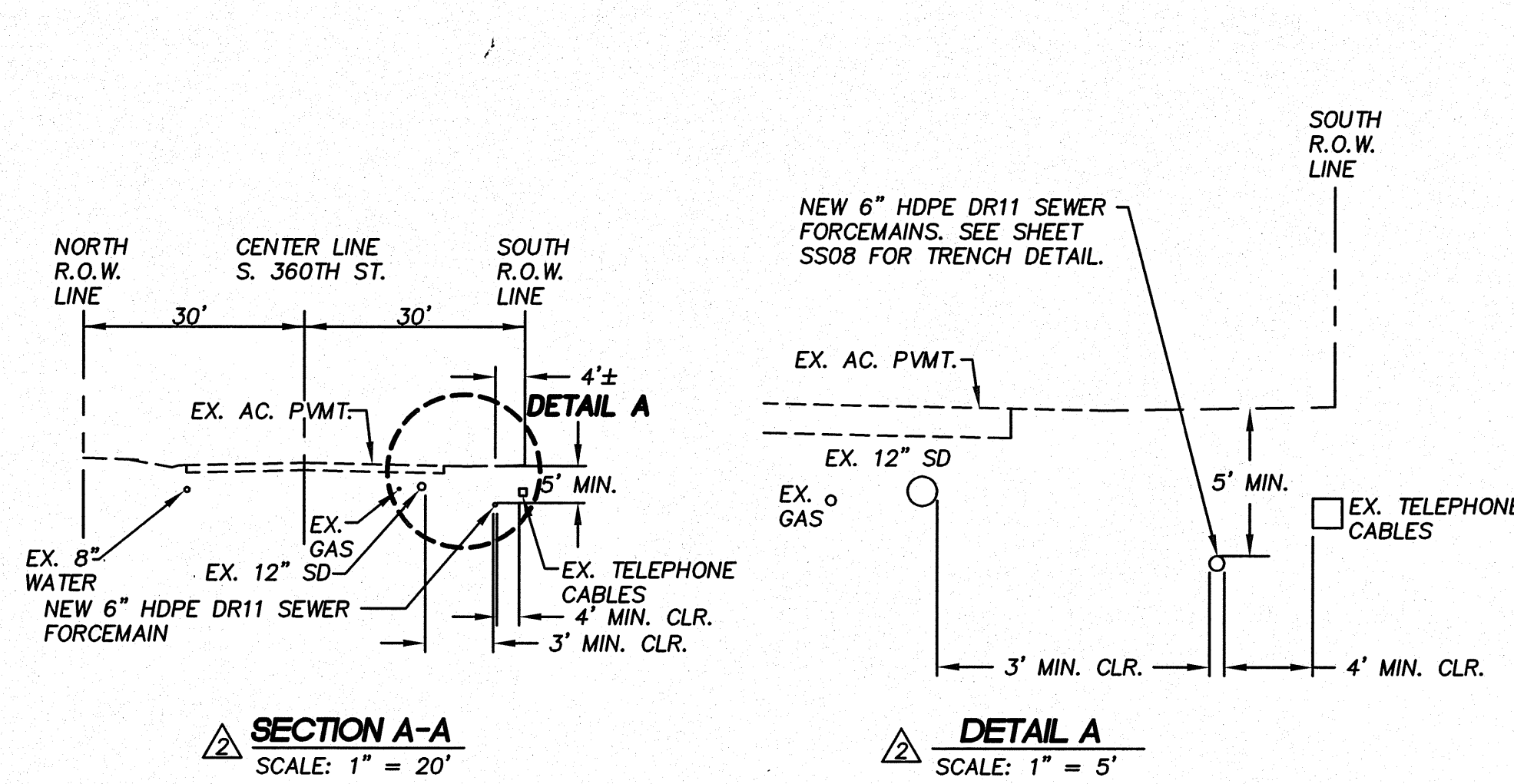
**BENCH MARK :**

KING COUNTY SURVEY CONTROL POINT No. 6905, SW CORNER OF SECTION 27, T 24 N, R 4 E, W.M., CONCRETE MONUMENT WITH LEAD AND BRASS TACK, SET 1.2 FEET BELOW GRADE, IN STANDARD KC MON. CASE.  
ELEVATION = 367.06



**NOTES :**

1. THE MINIMUM SEPARATION BETWEEN (PARALLEL PIPELINES) WATER MAIN, WATER SERVICE LINE AND PRESSURE SEWER FACILITIES (MUST BE BELOW WATER MAIN OR WATER SERVICE) MUST BE MET, ARE AS FOLLOWS: HORIZONTAL >=10' MEASURED EDGE TO EDGE VERTICAL >=18", MEASURED EDGE TO EDGE.
2. THE MINIMUM SEPARATION BETWEEN (CROSSING PIPELINES) WATER MAIN, WATER SERVICE LINE AND PRESSURE SEWER FACILITIES (MUST BE BELOW WATER MAIN OR WATER SERVICE) MUST BE MET, ARE AS FOLLOWS: HORIZONTAL >=18" MEASURED EDGE TO EDGE VERTICAL >=18" MEASURED EDGE TO EDGE.
3. IF THE EXISTING WATER IS AC PIPE, IT SHALL BE REPLACED WITH SAME SIZE DUCTILE IRON PIPE NO LESS THAN 2 FEET INTO BOTH TRENCH WALLS (NO CDF CRADLE ALLOWED).
4. LOCATION OF EXISTING UNDERGROUND UTILITIES WAS PROVIDED BY UTILITY LOCATE AND BY AS BUILT RECORDS. UTILITY PAINT MARKS WERE FIELD SURVEYED BY CES NW INC.
5. OTHER UTILITY SEPARATION BETWEEN PRESSURE SEWER FACILITIES MUST BE MET, ARE AS FOLLOWS: HORIZONTAL >=3' MEASURED EDGE TO EDGE VERTICAL >=6", MEASURED EDGE TO EDGE.
6. FOR PARCELS IN PEPPER HILL ESTATES AREAS, EXISTING PARCEL NUMBERS AND LOT NUMBERS WILL BE UPDATED AFTER BOUNDARY LINE ADJUSTMENTS ARE RECORDED.
7. ALL CLEANOUTS W/PIG PORTS ARE USED AS TRACER WIRE STATIONS.
8. FRAMES AND COVERS FOR CLEANOUTS/PIGPORTS NOT SUBJECT TO VEHICULAR TRAFFIC SHALL BE SET 6" ABOVE FINISHED GRADE AND BE PROTECTED BY VALVE BOX PROTECTIVE PADS.
9. TRACER WIRES ARE REQUIRED FOR THE 6" LPS LINES. THE WIRES SHOULD BE TAGGED OR LABELED IN EACH TRACER WIRE STATION. THE TAGS SHOULD BE STAINLESS OR OTHER NON RUSTING METAL.



**LAKEHAVEN UTILITY DISTRICT**

0 Water Plan      8 Sewer Plan

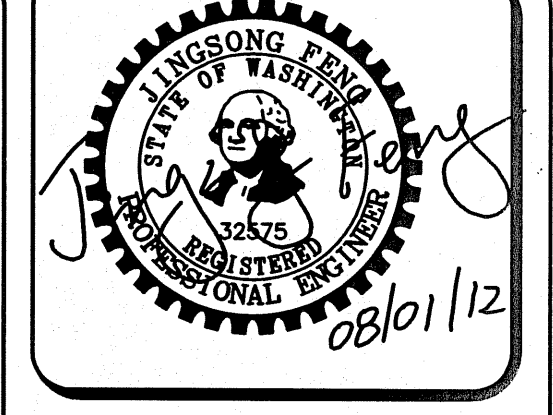
Dated \_\_\_\_\_

**APPROVED FOR CONSTRUCTION**  
SUBJECT TO CHANGES NOTED

The District's review is not a check of any dimension or quantities and will not relieve the Developer from responsibility for errors of any sort. No changes shall be made in the plans except by the consent of the District.

General Manager/District Engineer      Date \_\_\_\_\_

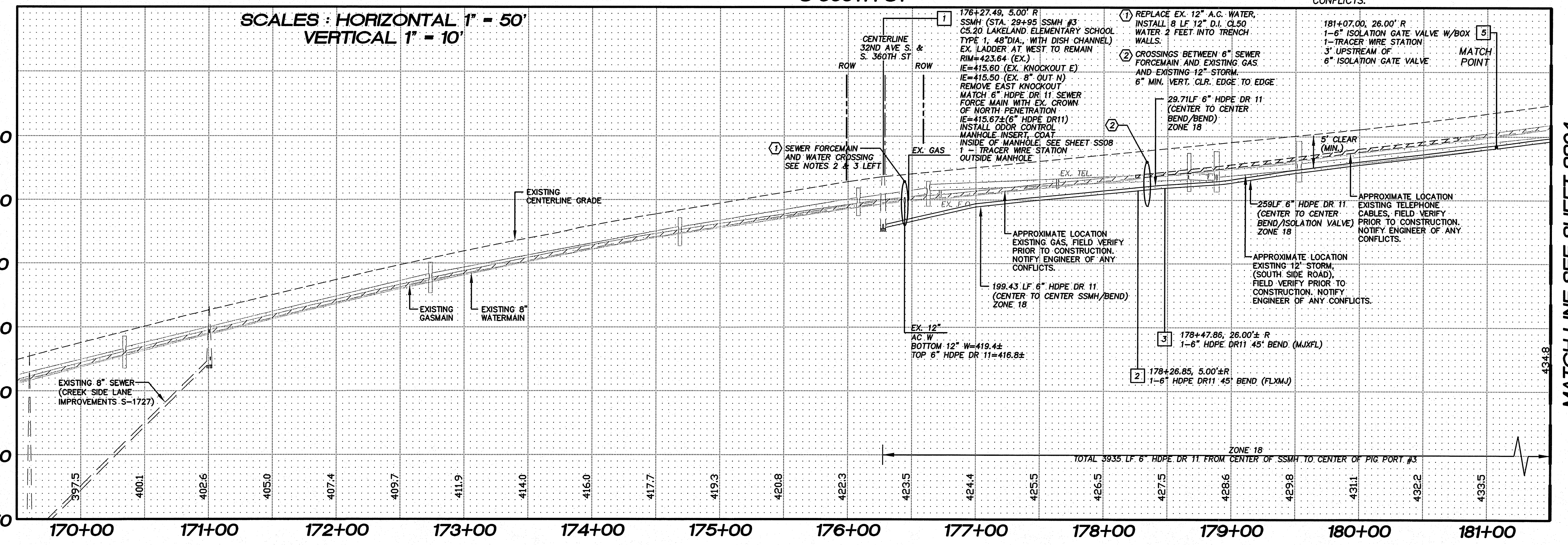
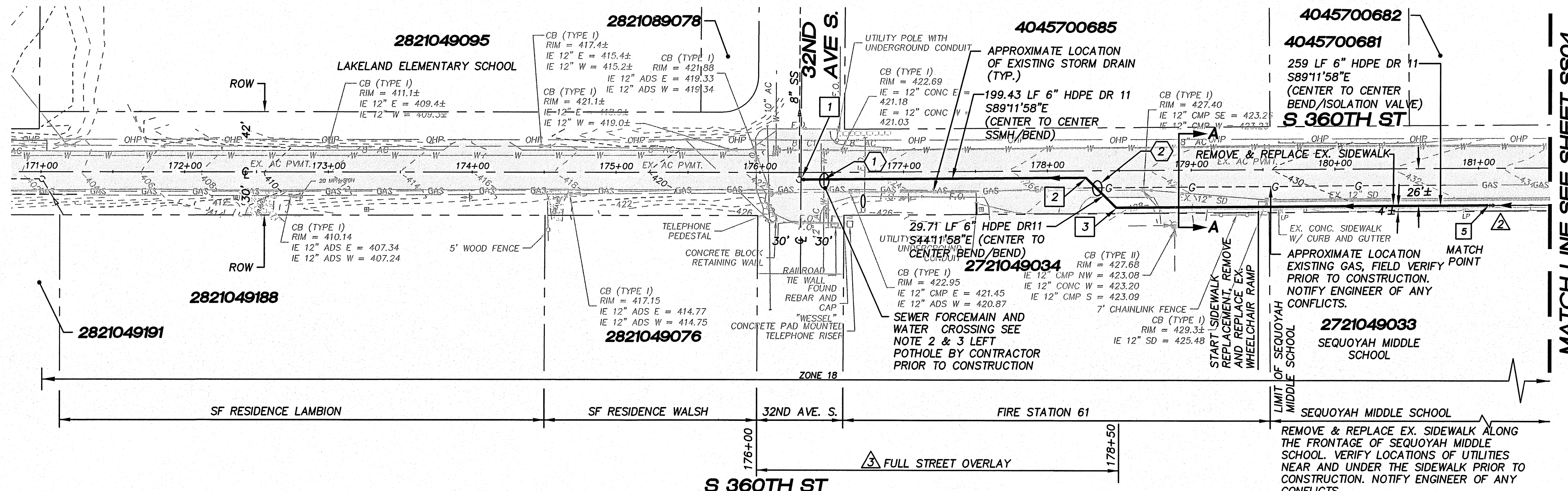
This construction plan will expire one year from plan approval date, if construction has not commenced.



15445 53RD AVE. S.  
SEATTLE, WA 98188  
PHONE: (206) 431-7970  
FAX: (206) 388-1648  
WEB SITE: PACENG.COM

**Pacific Engineering Design, LLC**

Civil Engineering and Planning Consultants



LAKEHAVEN UTILITY DISTRICT PROJECT No. 6308021

**RAM NIWAS CHURCH**

KING COUNTY, WA

FOR: SARKAR HOLDINGS, LLC.  
27902 36TH AVENUE SOUTH  
AUBURN, WA 98001

PROJECT NO.: 10021  
DRAWN BY: JQC  
ISSUE DATE: 7-23-2010  
SHEET REV.: 08-01-2011

**FORCE MAIN SANITARY SEWER**  
S 360TH ST  
STA. 171+00.70 TO STA. 181+07.00  
PLAN AND PROFILE

05052SS02-SS02-SS06.DWG

SS03