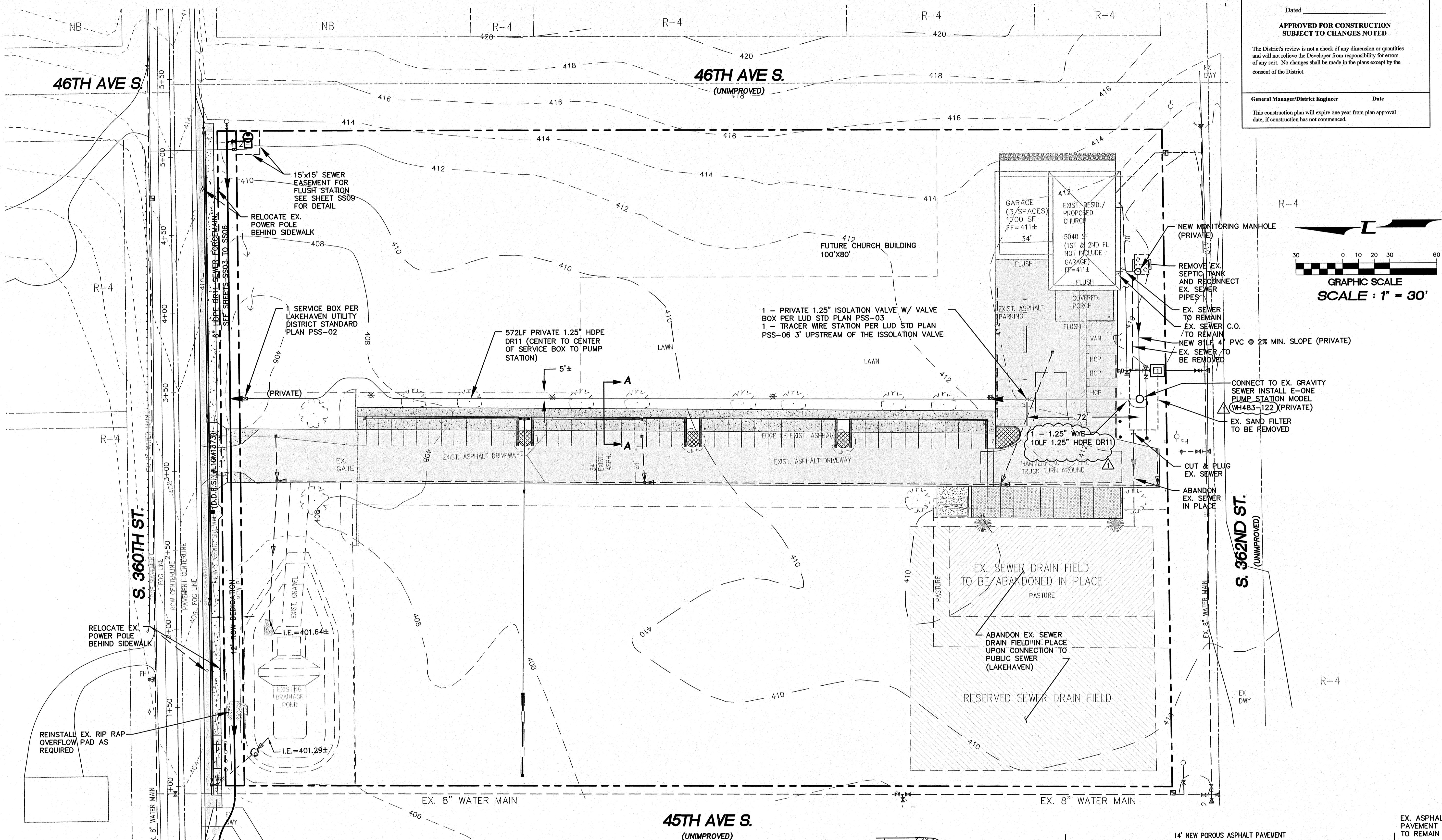
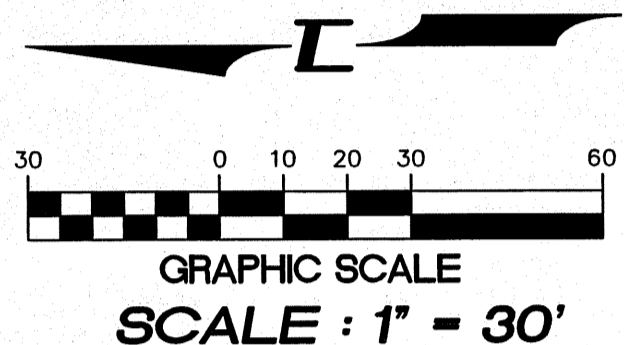


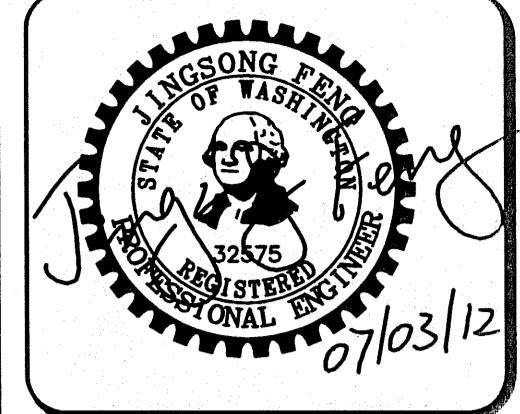
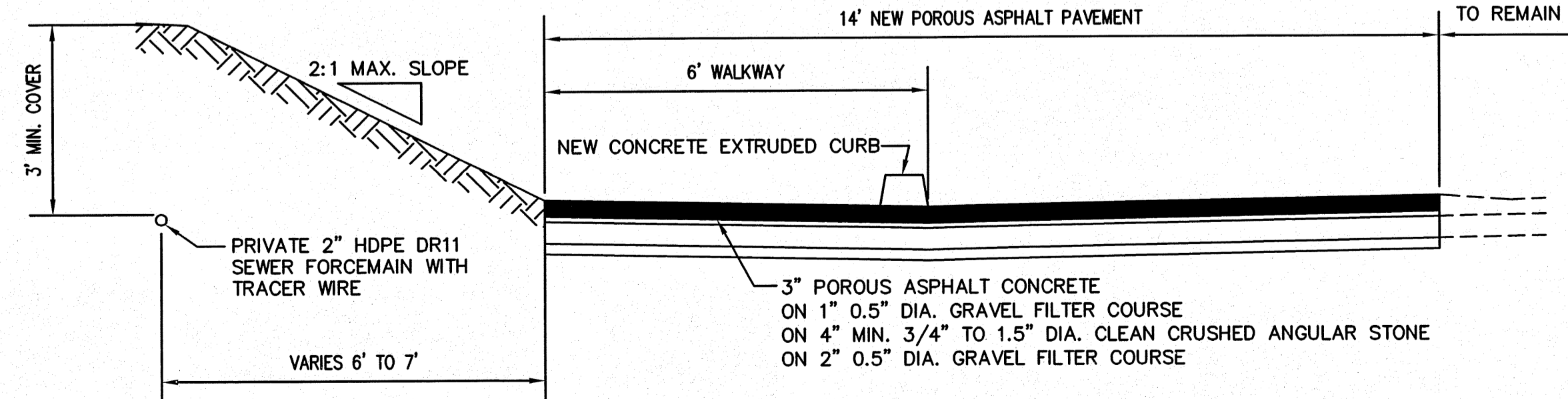
S.E. 1/4, SEC. 27, T. 21 N., R. 4 E., W.M.



LAKEHAVEN UTILITY DISTRICT
 0 Water Plan 9 Sewer Plan
 Dated _____
APPROVED FOR CONSTRUCTION
 SUBJECT TO CHANGES NOTED
 The District's review is not a check of any dimension or quantities and will not relieve the Developer from responsibility for errors of any sort. No changes shall be made in the plans except by the consent of the District.
 General Manager/District Engineer _____ Date _____
 This construction plan will expire one year from plan approval date, if construction has not commenced.



- NOTE:**
- A 6" HDPE DR11 FORCEMAIN WILL BE INSTALLED ALONG SOUTH 360TH STREET FROM THE GRAVITY SEWER CONNECTION POINT (SSMH#3, LUD PROJECT NUMBER 6309007, RECORD DRAWING NUMBER S1725, C5.20 LAKELAND ELEMENTARY SCHOOL) TO THE FLUSH STATION CONNECTION POINT AT THE NORTHEAST CORNER OF THE CHURCH INCLUDING PROPERTY FRONTAGE ON SOUTH 360TH STREET. SEE SHEET SS03 TO SS06 FOR SEWER FORCEMAIN PLANS ALONG S 360TH STREET.
 - SEPARATE SEWER SERVICE CONNECTION PERMIT REQUIRED TO CONSTRUCT BUILDING SEWER /GRINDER PUMP AND TO CONNECT TO THE SEWER MAIN.
 - SEE CIVIL PLANS OF BUILDING PERMIT SET FOR FRONTAGE IMPROVEMENT, ONSITE PARKING IMPROVEMENT, WALKWAYS AND STORM IMPROVEMENTS.



15445 53RD AVE. S.
 SEATTLE, WA 98188
 PHONE: (206) 481-7970
 FAX: (206) 388-1648
 WEB SITE: PACENG.COM

Pacific Engineering Design, LLC
 Civil Engineering and Planning Consultants

LAKEHAVEN UTILITY DISTRICT PROJECT No. 6308021
RAM NIWAS CHURCH
 KING COUNTY, WA
 FOR: SARKAR HOLDINGS, LLC.
 27902 36TH AVENUE SOUTH
 AUBURN, WA 98001

PROJECT NO.: 10021
 DRAWN BY: CJB
 ISSUE DATE: 7-23-2010
 SHEET REV.: 07-03-2012

SANITARY SEWER PLAN

10021SS01.DWG
SS02