

S 360 TH ST

← 211

-176 + 27.49
CONNECT TO EX. SMH

2" & 6" HOPE DRILL
SEWER FORCE MAIN

32 ND AVE. S.



S. 360TH ST.

GAS

EX. 12" STORM

32 AVE. S.

176+27.49
CONNECT TO EX. SMH

2" & 6" HDPE
DRILL SEWER
FORCE MAIN

N





S. 360TH ST.

32ND AVE S.

FIRE STATION 61

178+00

2" & 6" HDPE
DRILL SEWER
FORCE MAIN

EX. 12" STORM

GAS

EX. 12" STORM

179+00

FIRE STATION 61

S. 360TH ST.

GAS

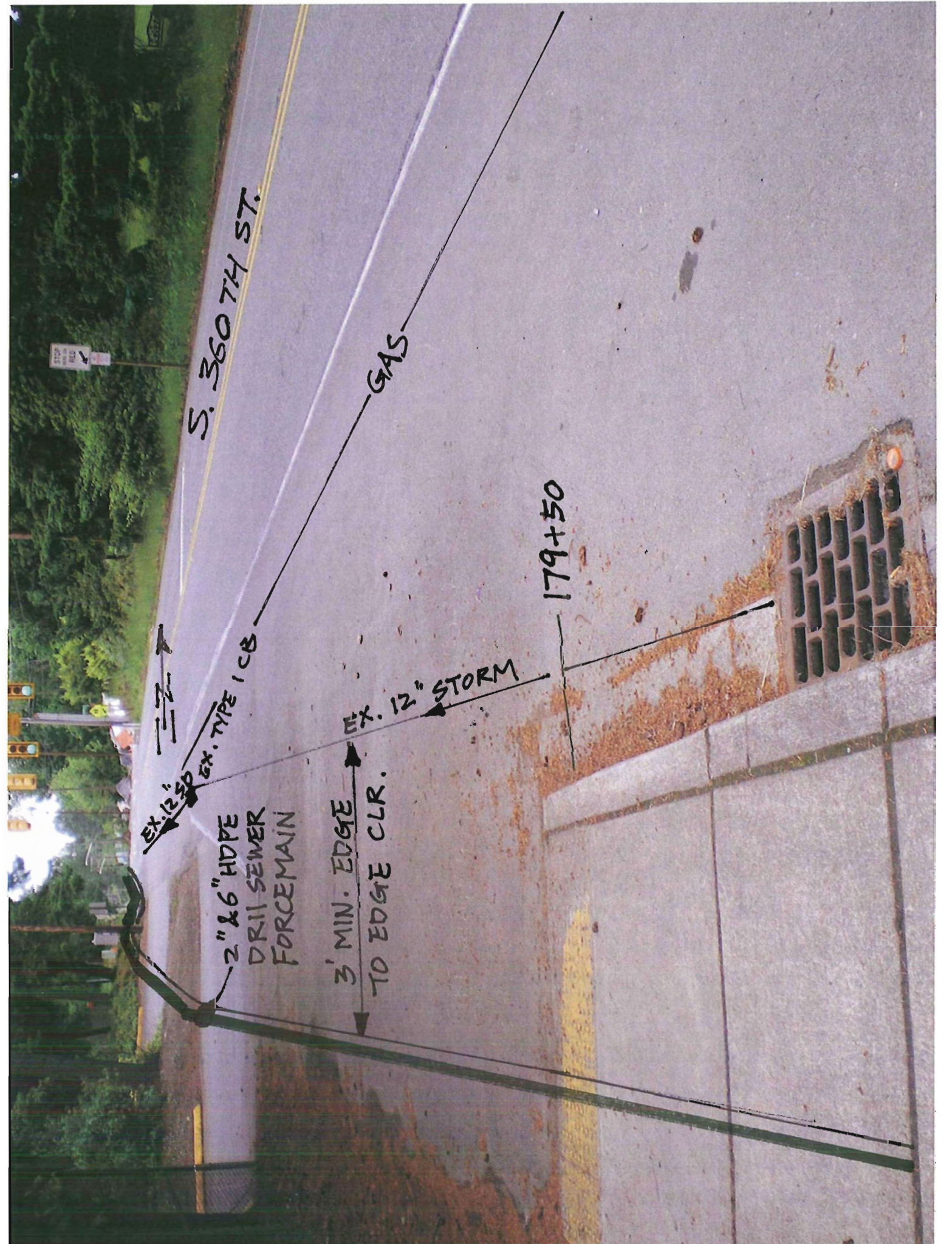
179+50

EX. 12" SD
EX. TYPE 1 CB

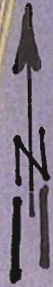
2" & 6" HDPE
DRILL SEWER
FORCE MAIN

3' MIN. EDGE
TO EDGE CLR.

EX. 12" STORM



S. 360TH ST.



2" & 6" HOPE DRILL
SEWER FORCE MAIN

OPTIONAL
ALIGNMENT
IF EASEMENT
IS AVAILABLE

GAS

8" x 12" STORM

3' MIN. EDGE
TO EDGE CLR.

181+00

179+50

20

OPTIONAL ALIGNMENT
IF EASEMENT IS AVAILABLE

3' MIN. EDGE
TO EDGE CLR.

12" STORM

2" X 6" HDPE
DRILL SEWER
FORCE MAIN

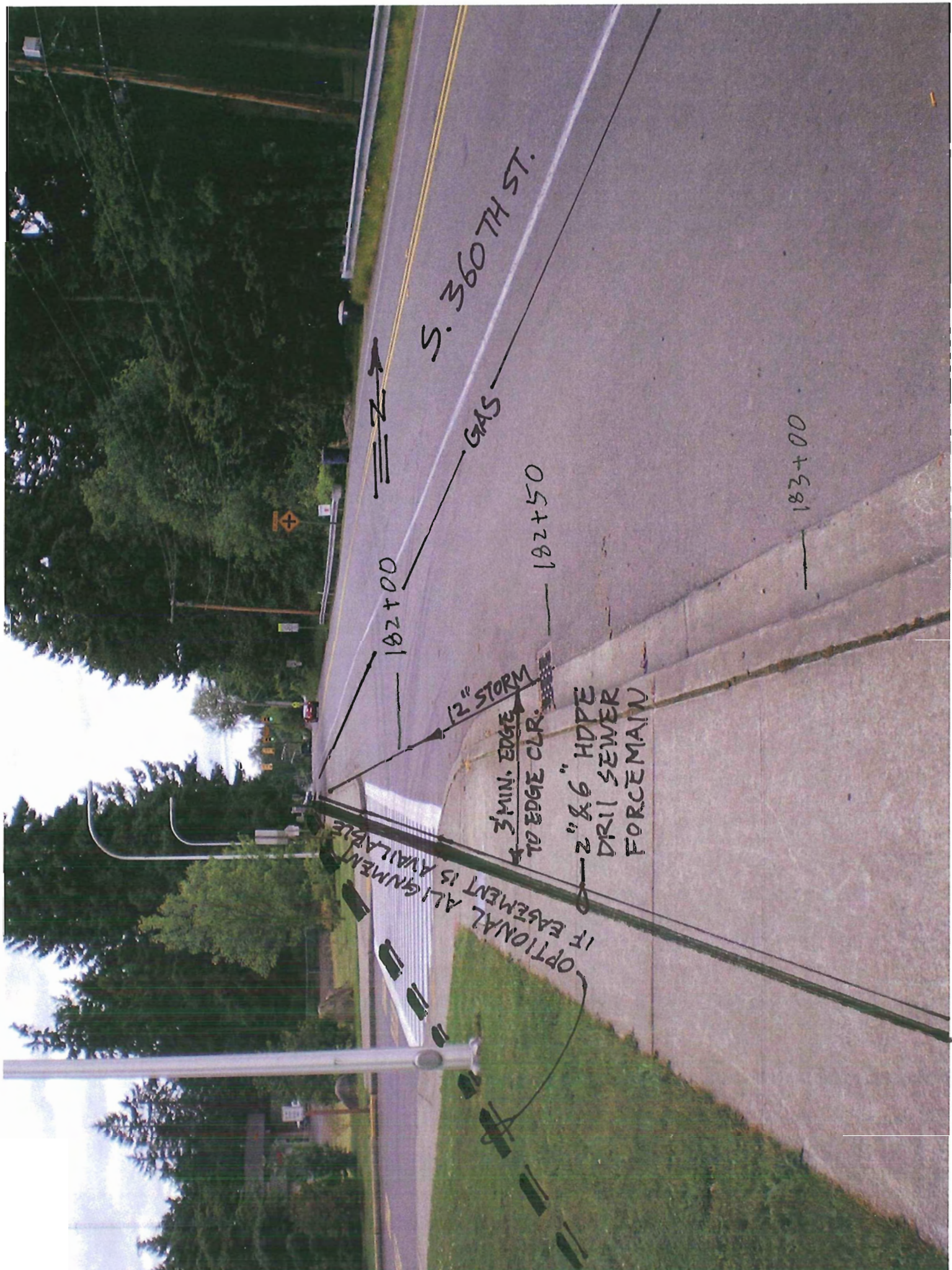
182+00

182+50

183+00

S. 360TH ST.

GAS



S 360TH ST.

GAS

184+25

OPTIONAL ALIGNMENT IF EASEMENT IS AVAILABLE 2" & 6 HOPE DRILL SEWER FORCE MAIN

182+00



S. 360 TH ST.

GAS

OPTIONAL
ALIGNMENT
IF EASEMENT
IS AVAILABLE

185+00

2" x 6" HOPE DRILL
SEWER FORCEMAIN



S. 360TH ST.

ZZ

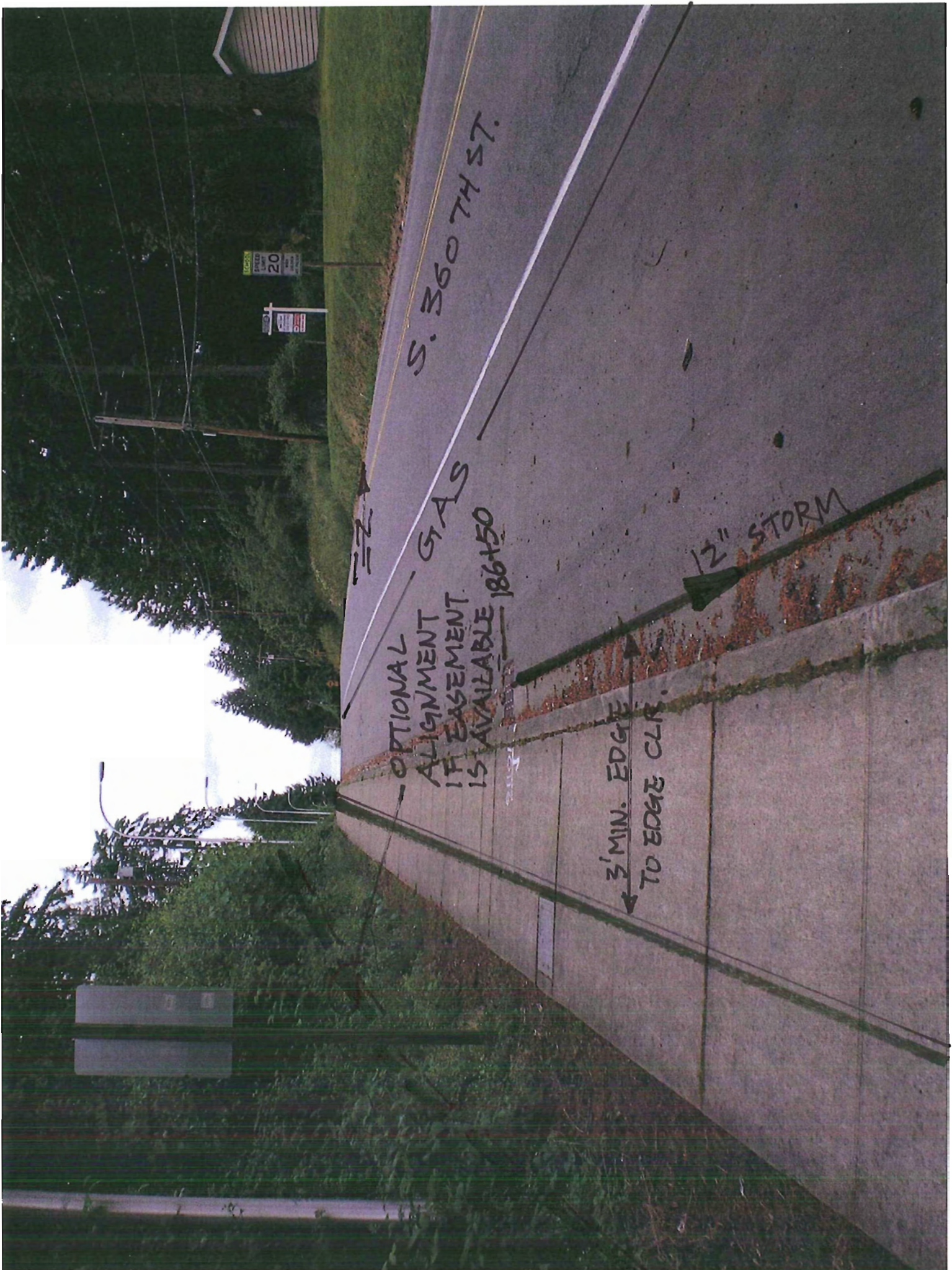
OPTIONAL ALIGNMENT IF EASEMENT IS AVAILABLE 186+50

12" STORM

3' MIN. EDGE TO EDGE CLR.

20

STOP



S 360TH ST.

186+80

ZZZ

2" & 6" HDPE
DRILL SEWER
FORCE MAIN

OPTIONAL ALIGNMENTS
IF EASEMENT IS AVAILABLE
GAS

12" STORM

3' MIN. EDGE
TO EDGE CLR.



S. 3607H ST.

GAS

12" STORM

189+50

Ø-2" & 6" HDPE
DRY | SEWER
FORCE MAIN

3' MIN. EDGE TO
EDGE CLR.

OPTIONAL ALIGNMENT
IF EASEMENT IS
AVAILABLE



S 360 74 ST.

→

GAS

OPTIONAL ALIGNMENT IF EASEMENT IS AVAILABLE

2" & 6" HDPE DRILL SEWER FORCE MAIN

192+40

12" STORM

3' MIN. EDGE TO EDGE CLR.

12" STORM



192+90.0

S 360 TH ST.
FULL WIDTH ASPHALT OVERLAY

2" x 6" HDPE DRILL SEWER FORCE MAIN
ALONG CENTER OF EAST BOUND LANE
FULL WIDTH ASPHALT OVERLAY IS
REQUIRED

GAS

195+60 ± MIN.
CRACK

EX. GUARD RAIL
TO REMAIN, IF DAMAGED
REPLACED BY CERTIFIED
CONTRACTOR





S. 360 TH ST.

A FULL WIDTH OVERLAY

2" & 6" HDPE DRILL SEWER FORCE MAIN

2" & 6" HDPE DRILL SEWER FORCE MAIN

GAS

195+60

GAS

197+50

DITCH





Full Width Overlay
199+00
S. 360TH ST.

199+50±

GAS

2" & 6" HDPE
DR-11 SEWER
FORCE MAIN

199+00



202+60

S 360TH ST.

GAS

2" & 6" HDPE
DRILL SEWER
FORCE MAIN

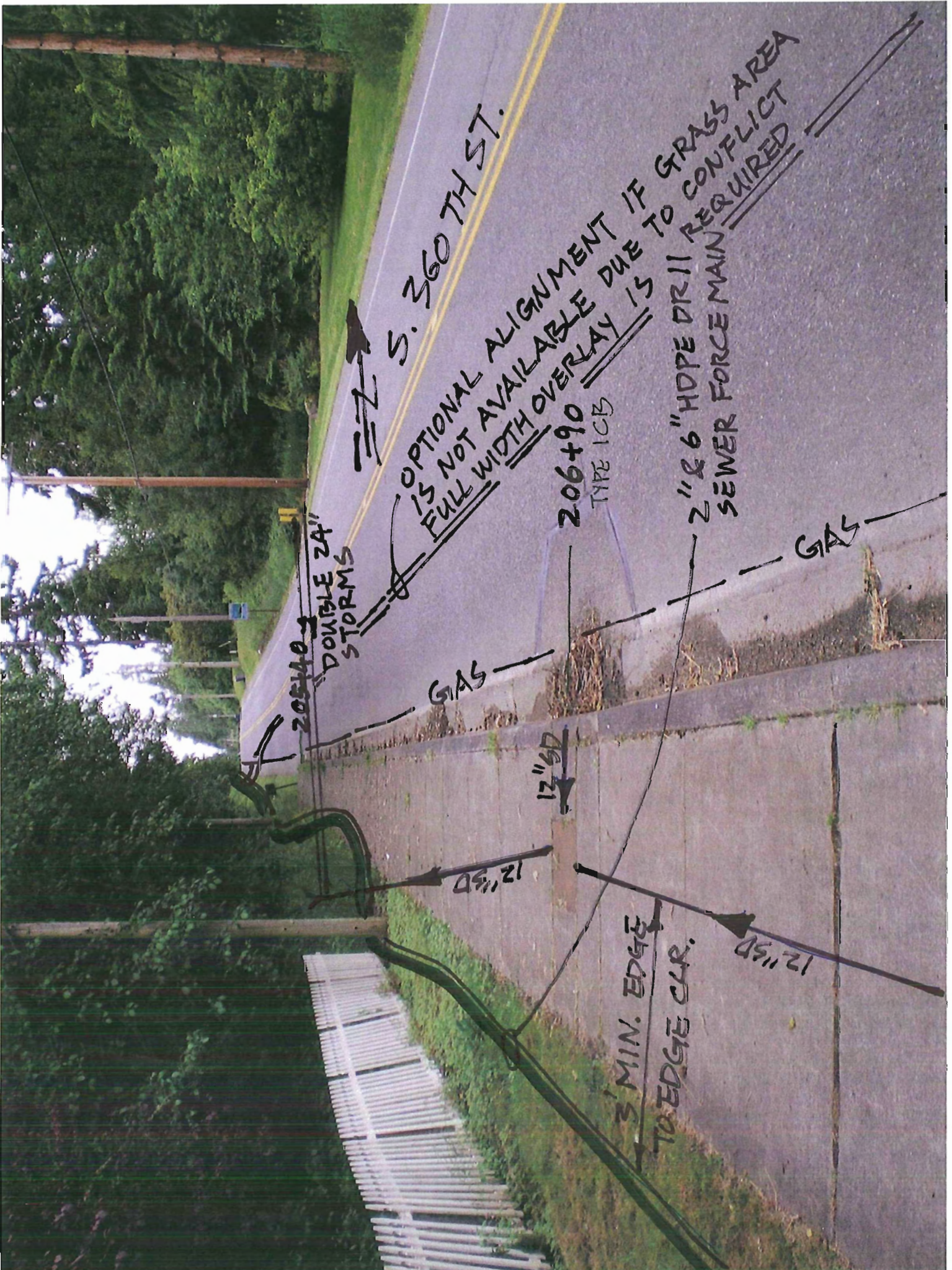
DITCH

3' MIN.
CLR.

2' 0" MIN.

3'





S. 360 TH ST.

OPTIONAL ALIGNMENT IF GRASS AREA IS NOT AVAILABLE DUE TO CONFLICT FULL WIDTH OVERLAY IS REQUIRED

205+40 DOUBLE 24" STORMS

206+90 TYPE 1CB

2" & 6" HDPE DRILL SEWER FORCE MAIN

GAS

GAS

12" SD

12" SD

3' MIN. EDGE TO EDGE CUR.

12" SD



FULL WIDTH OVERLAY
IS REQUIRED FOR
OPTIONAL ALIGNMENT
IF GRASS AREA IS NOT
AVAILABLE

S. 360TH ST.

S. 206TH ST.
TYPE 1 CB

DOUBLE 24" SD

2" & 6" HDPE
DRILL SEWER
FORCE MAIN

12" SD



วัดวชิรวิวัฒน์ ธรรมศาล
WASHINGTON BUDDHIST MONASTERY
BUDDHIST CENTER

4401

S. 360TH ST.

2" & 6" HDPE DRILL
SEWER FORCE MAIN

208+45

OPTIONAL
ALIGNMENT IF
GRASS AREA
IS NOT AVAILABLE

FULL WIDTH OVERLAY
IS REQUIRED FOR THIS
OPTION

GAS

GAS

12" SD

12" SD

12" SD

3' MIN. EDGE TO
EDGE CLR.

208+45
TYPE 1 CB

20" x 6" HOPE
DRILL SEWER
FORCE MAIN

GAS

S. 360TH ST.

OPTIONAL
ALIGNMENT IF
GRASS AREA IS
NOT AVAILABLE
FULL WIDTH OVERLAY
IS REQUIRED FOR
THIS OPTION

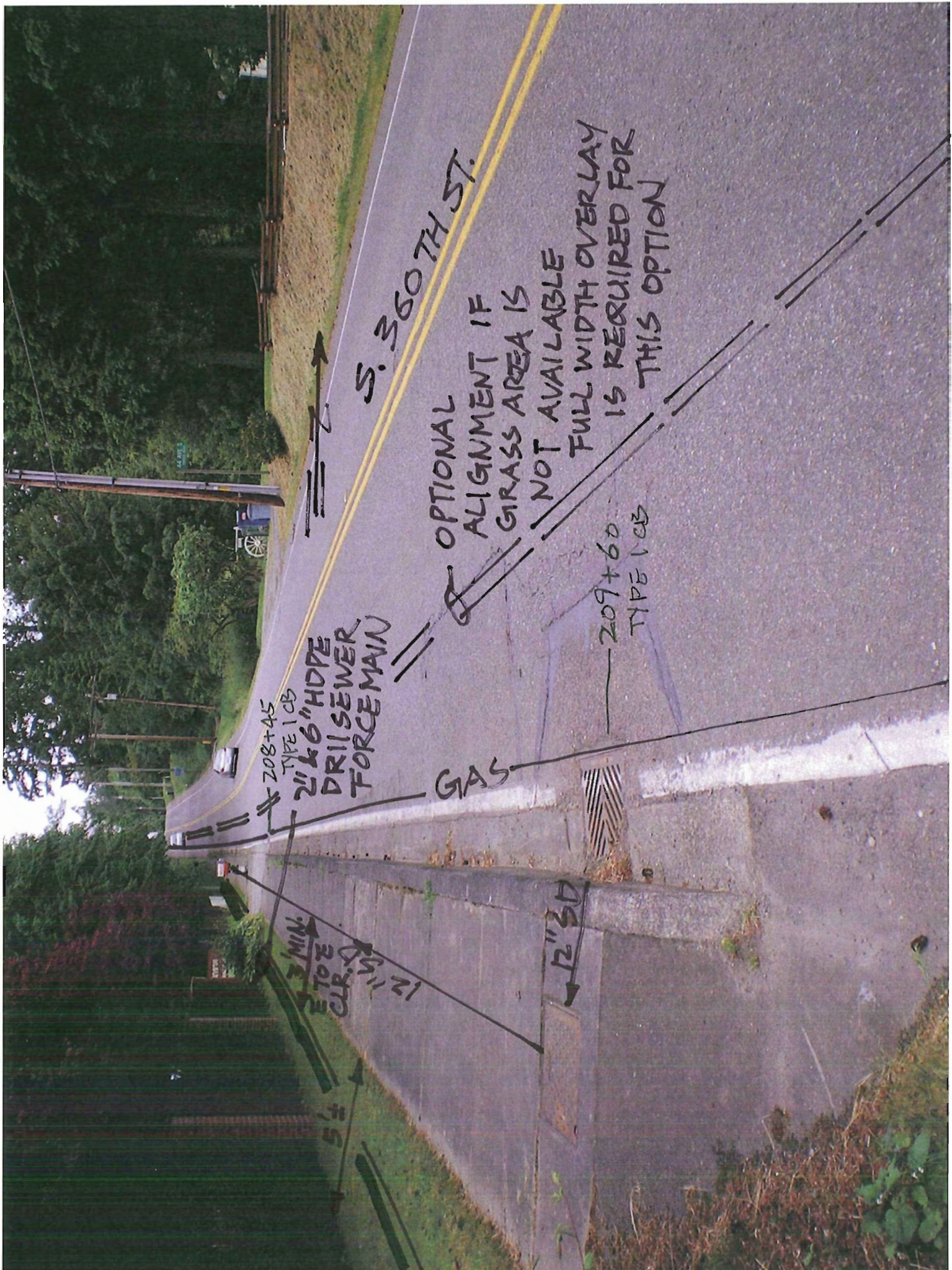
209+60
TYPE 1 CB

3 MIN.
TO E
CUR. A

12" SD

5' ±

12" MIN.





S. 360TH ST.

210400

2" x 6" HDPE DRILL
SEWER FORCE MAIN

GAS



← Z E

MAY NEED
TO REMOVE
TREE

RAM NIWAS

210+40

2" & 6" HDPE
DIR II SEWER
FORCE
MAIN



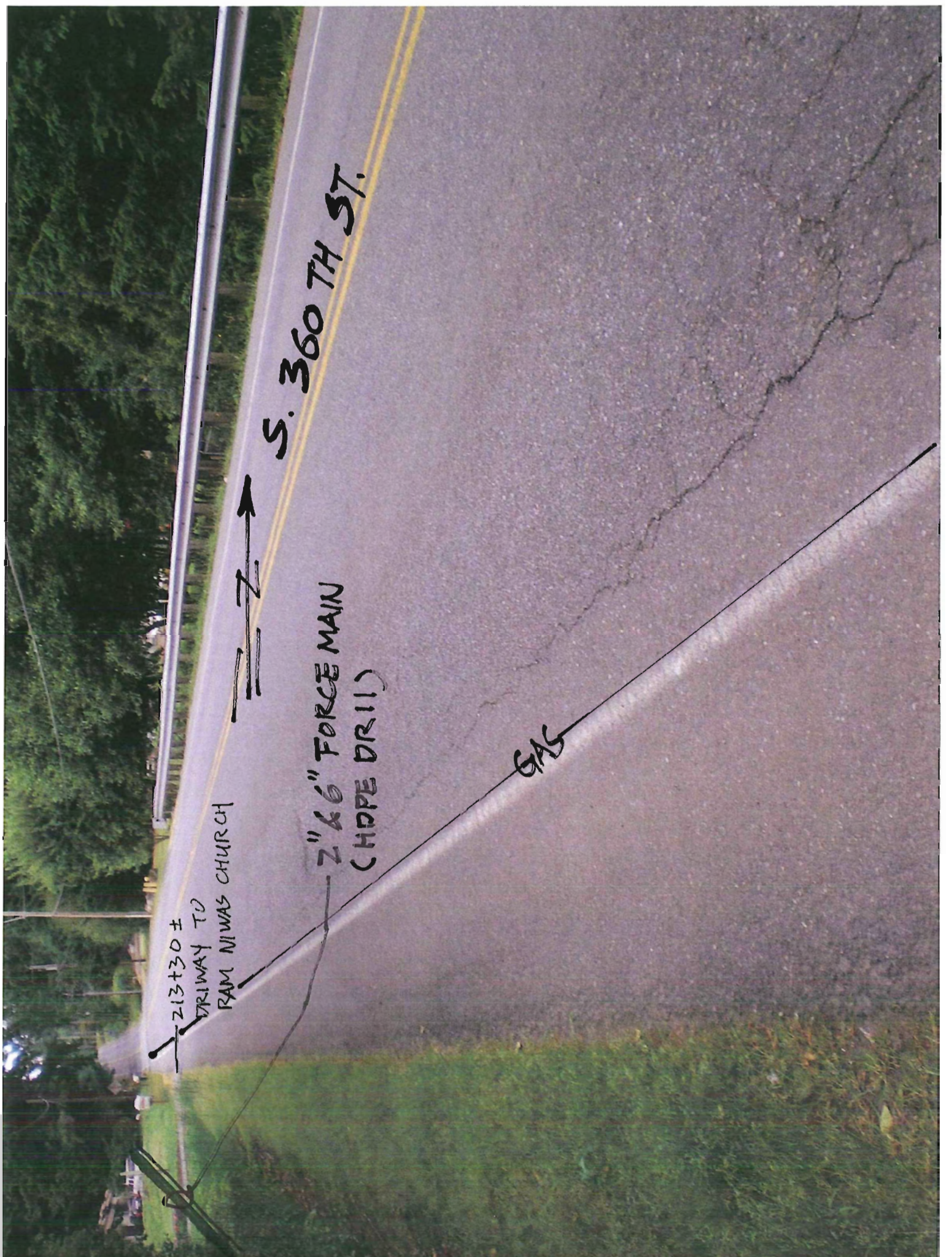
213+30 ±
DRIVEWAY TO
RAM NIWAS CHURCH



S. 360 TH ST.

2" & 6" FORCE MAIN
(CHDPE DR11)

GAS





2" & 6" HDPE
DR 11 SEWER
FORCE MAIN

213+30±
DRIVEWAY TO
RAM NIWAS
CHURCH

S. 360 TH ST.

23 S. 360TH ST.

CLEANOUT/
PIGPOPT
END OF 6"
HDPE DR11
SEWER
FORCE MAIN

215140 ± END
OF RAM NINAS
CHURCH
FRONTAGE