

- 7 1-6" ISOLATION GATE VALVE W/BOX
- 8 1-6" ISOLATION GATE VALVE W/BOX
- 9 2-6" ISOLATION GATE VALVE W/ BOX  
1-6" FORCE MAIN CLEANOUT W/PIG PORT #3  
1-6" HDPE DR 11 SPOOL

N.W. 1/4, SEC. 26, T. 21 N., R. 4 E., W.M.

VERTICAL DATUM:

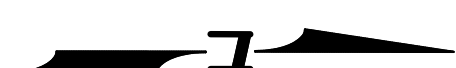
N.AVD 88

BENCH MARK:

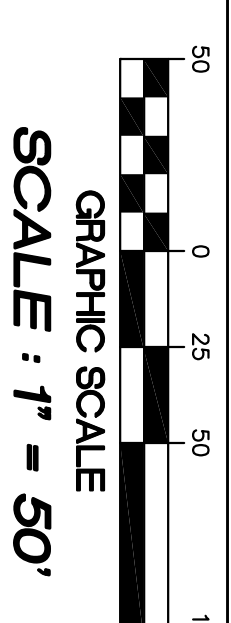
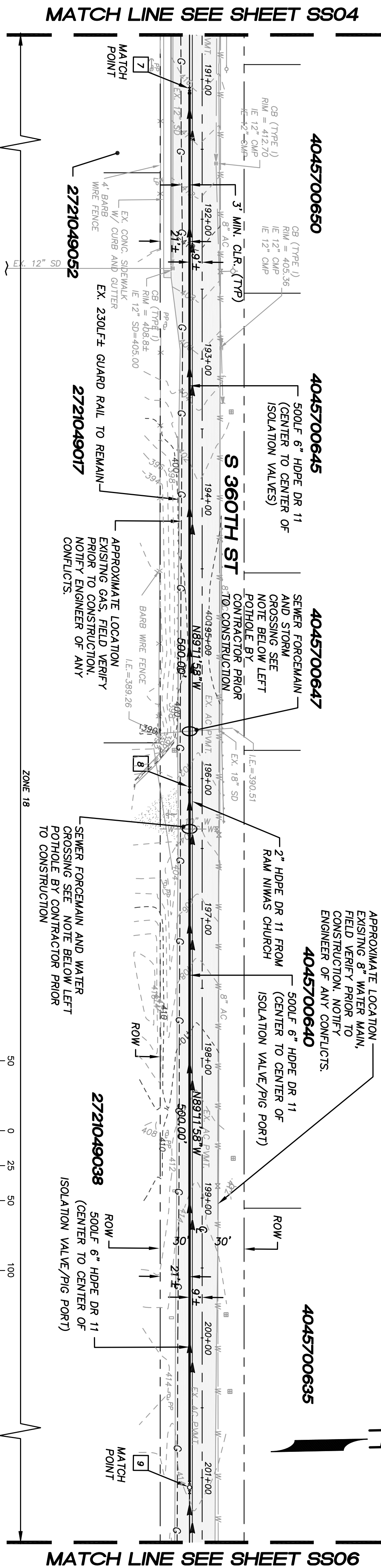
KING COUNTY SURVEY CONTROL POINT No. 8905  
SW CORNER OF SECTION 27, T. 24 N., R. 4 E. W.M.,  
CONCRETE MONUMENT WITH LEAD AND BRASS TACK,  
SET 1.2 FEET BELOW GRADE, IN STANDARD RO. MON. CASE.  
ELEVATION = 367.06

KEY MAP  
SCALE: 1" = 1000'

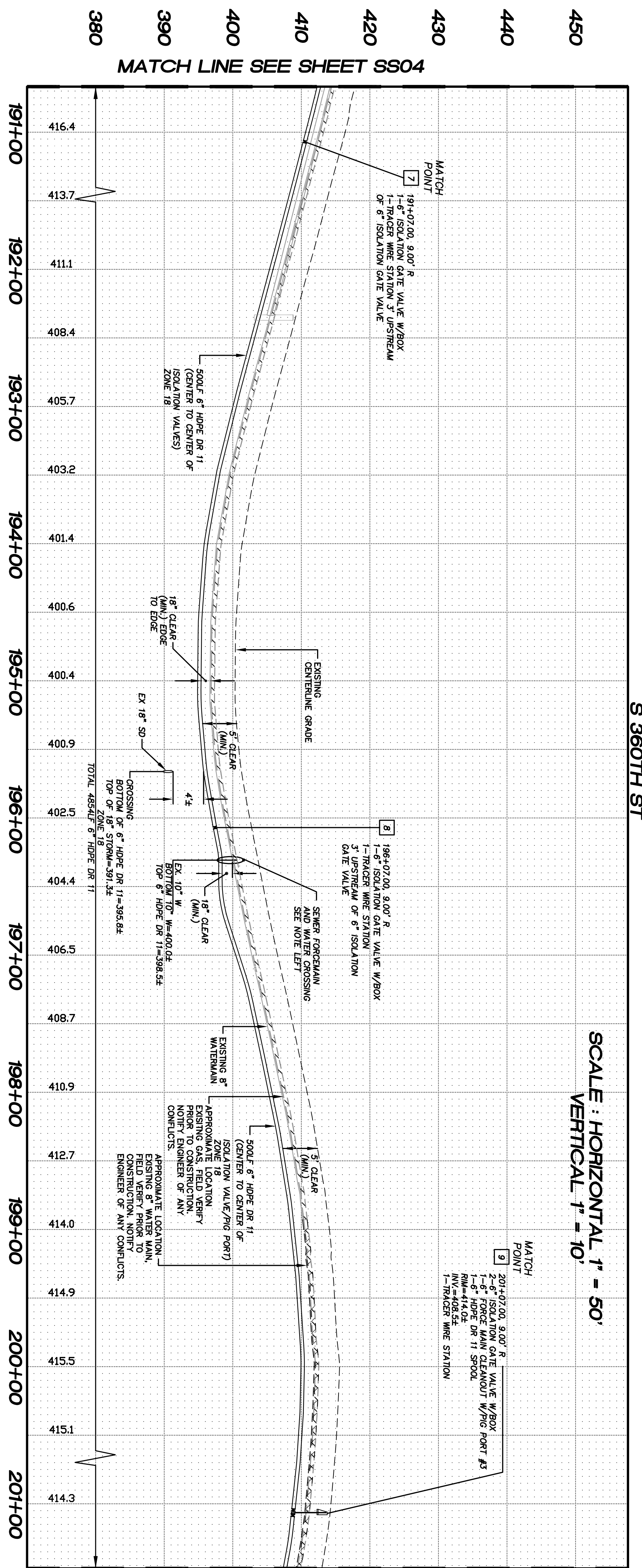
SS03 SS04 SS05 SS06



LAKEHAVEN UTILITY DISTRICT	
0 Water Plan	9 Sewer Plan
Date: _____	Date: _____
APPROVED FOR CONSTRUCTION SUBJECT TO CHANGES VOTED	
<p><small>The District's review is not a check of any dimension or quantities and will not relieve the Developer from responsibility for errors of any sort. No changes shall be made in the plans except by the consent of the District.</small></p>	
General Manager/District Engineer	Date
<p><small>This construction plan will expire one year from plan approval date. If construction has not commenced.</small></p>	



MATCH LINE SEE SHEET SS04



NOTES:

1. THE MINIMUM SEPARATION BETWEEN (PARALLEL PIPELINES) WATER MAIN, WATER SERVICE LINE AND PRESSURE SEWER FACILITIES (MUST BE BELOW WATER MAIN OR WATER SERVICE) MUST BE MET, ARE AS FOLLOWS: HORIZONTAL >=10' MEASURED EDGE TO EDGE. VERTICAL >=18" MEASURED EDGE TO EDGE.
2. THE MINIMUM SEPARATION BETWEEN (CROSSING PIPELINES) WATER MAIN, WATER SERVICE LINE AND PRESSURE SEWER FACILITIES (MUST BE BELOW WATER MAIN OR WATER SERVICE) MUST BE MET, ARE AS FOLLOWS: VERTICAL >=18" MEASURED EDGE TO EDGE. HORIZONTAL >=6" MEASURED EDGE TO EDGE. OTHER UTILITY SEPARATION BETWEEN PRESSURE SEWER FACILITIES FOR PARCELS IN PEPPER HILL ESTATES AREAS, EXISTING PARCEL BOUNDARY LINE ADJUSTMENTS WILL BE UPDATED AFTER BOUNDARY LINE ADJUSTMENTS ARE RECORDED.
3. ALL CLEANOUTS W/PIG PORTS ARE USED AS TRACE WIRE.
4. FRAMES AND COVERS FOR CLEANOUTS/PIGPORTS NOT SUBJECT TO VEHICULAR TRAFFIC SHALL BE SET 6" ABOVE FINISHED GRADE AND BE PROTECTED BY VALVE BOX PROTECTIVE PADS.
5. INSTALL APPROXIMATELY 4300 LF OF 2" HDPE DR11 FORCEMAIN AT THE SAME TRENCH OF THE 6" HDPE DR11 FORCEMAIN FROM SS04 #10 (S-1222) TO THE RAM NIWAS CHURCH. HORIZONTAL SEPARATION BETWEEN 2" AND 6" FORCEMANS SHOULD BE 2'-4" AND AS CONSISTENT AS POSSIBLE. PIPE CROWN ELEVATIONS SHOULD MATCH. TRACER WIRE AND TRACER WIRE STATIONS ONLY APPLY TO THE 6" FORCEMAIN.

MATCH LINE SEE SHEET SS06

SS05  
05055502-SS02-SS06.DWG

FORCE MAIN  
SANITARY SEWER  
S 3607TH ST  
STA. 191+07.00 TO  
STA. 201+07.00  
PLAN AND PROFILE

PROJECT NO.: 10021  
DRAWN BY: JQC  
ISSUE DATE: 7-23-2010  
SHEET REV.: 9-29-2010

LAKEHAVEN UTILITY DISTRICT PROJECT No. 6308021  
RAM NIWAS CHURCH  
KING COUNTY, WA.  
SATGURU RAM SINGH STANG  
15701 138TH PLACE SE  
RENTON, WA 98058  
PHONE: (206) 304-1911

Pacific  
Engineering  
Design, LLC  
Civil Engineering and  
Planning Consultants

15445 53RD AVE. S,  
SEATTLE, WA 98188  
PHONE:  
(206) 431-7970  
FAX:  
(206) 388-1648  
WEB SITE:  
PACENG.COM

