

08/20/2010 09:48:43 05052SS03-SS03-SS06

REVISIONS:

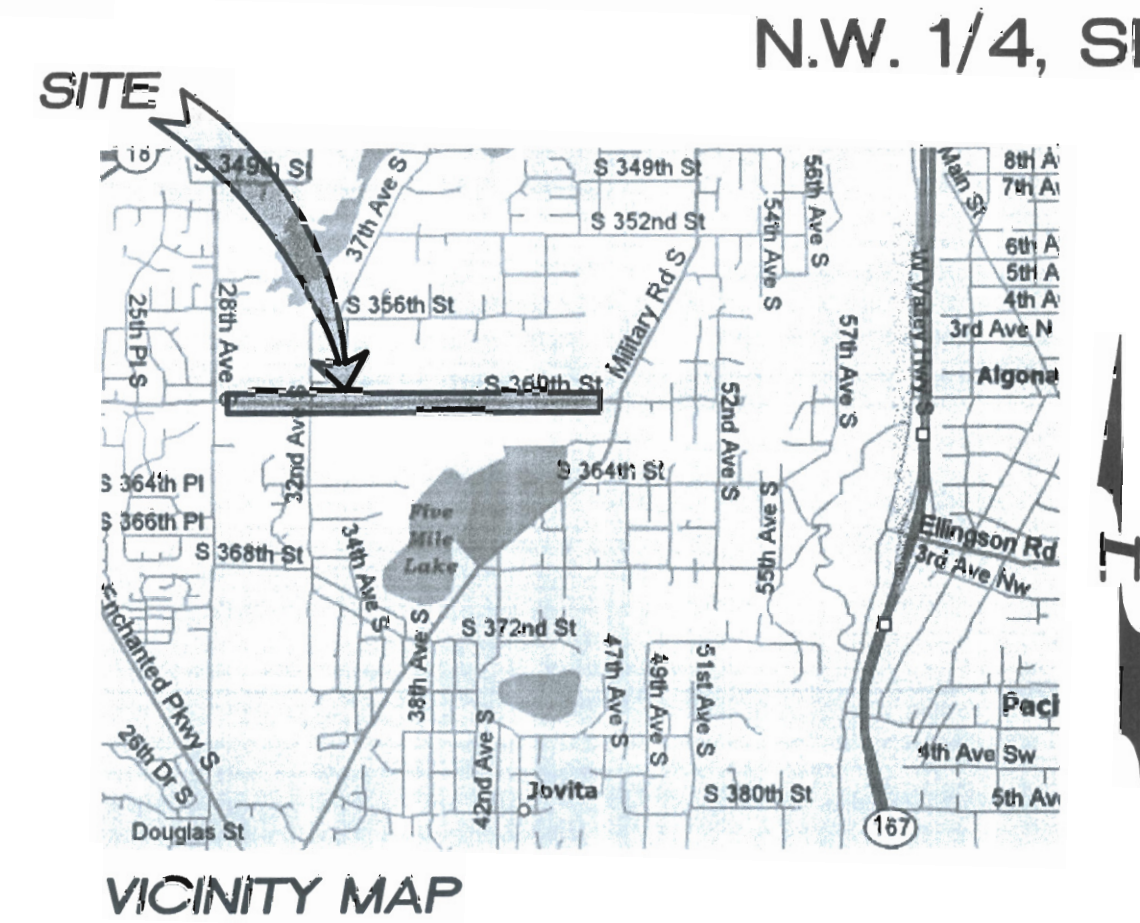
- 1 SSMH #10 (CREEK SIDE LANE IMPROVEMENTS S-1727)
- 2 2-6" HDPE DR 11 45' BEND
- 3 2-6" ISOLATION GATE VALVE W/ BOX
1-6" FORCE MAIN CLEANOUT W/PIG PORT #1
- 4 1-6" ISOLATION GATE VALVE W/BOX
- 5 1-6" ISOLATION GATE VALVE W/BOX
- 6 REPLACE EX. 12" A.C. WATER, INSTALL 20LF 12" D.I. CL50 WATER 10 FEET BOTH SIDES OF SEWER CROSSING.

VERTICAL DATUM:

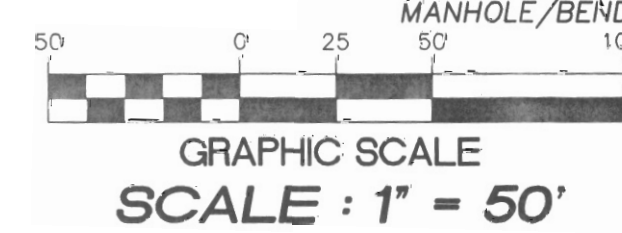
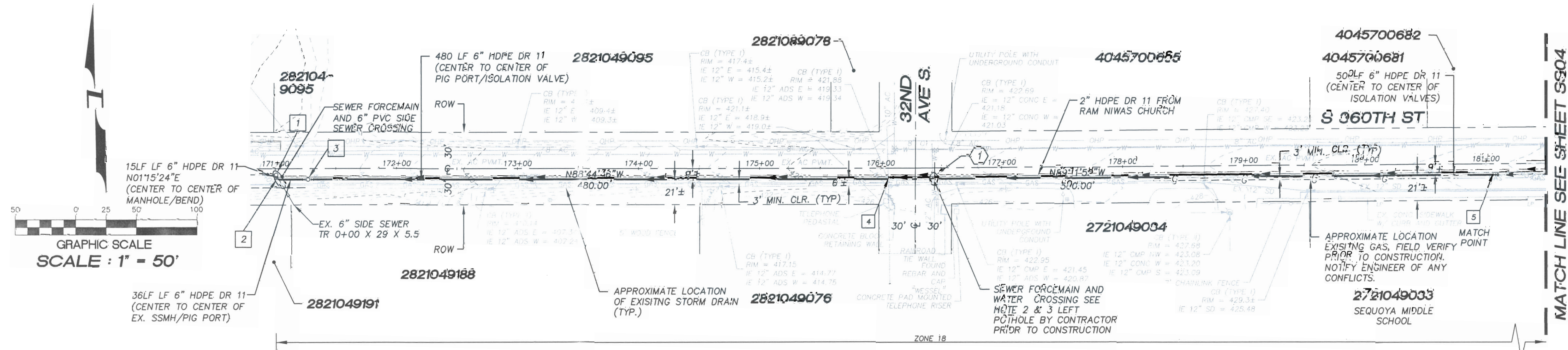
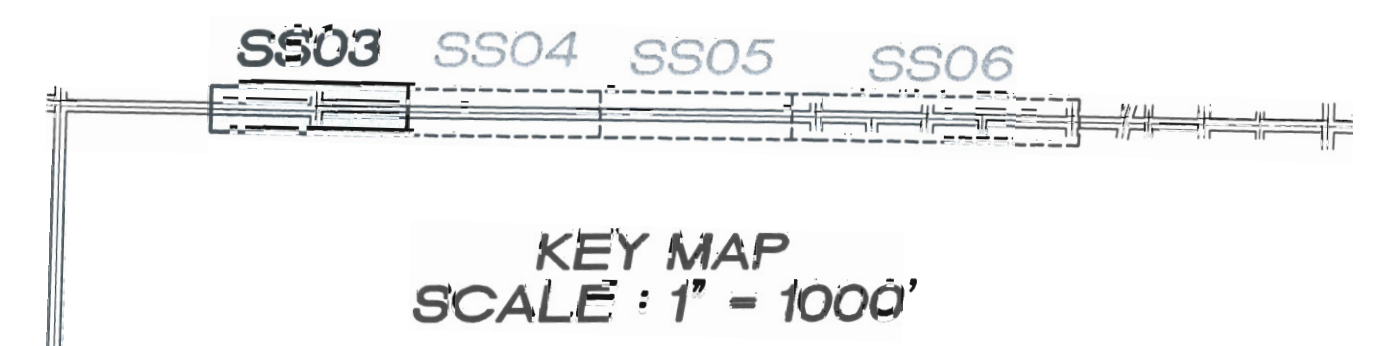
NAVD 88

BENCH MARK:

KING COUNTY SURVEY CONTROL POINT No. 6905, SW CORNER OF SECTION 27, T 24 N, R 4 E, W.M., CONCRETE MONUMENT WITH LEAD AND BRASS TACK, SET 1.2 FEET BELOW GRADE, IN STANDARD KC MON. CASE.
ELEVATION = 367.06

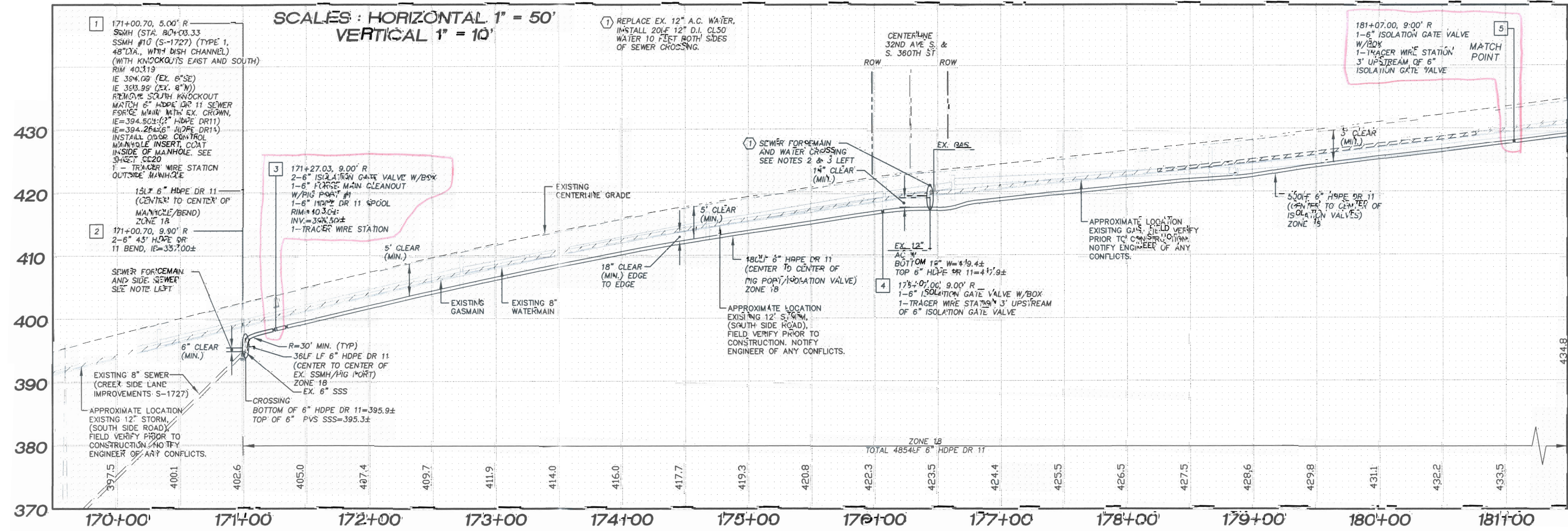


N.W. 1/4, SEC. 26, T. 21 N., R. 4 E., W.M.

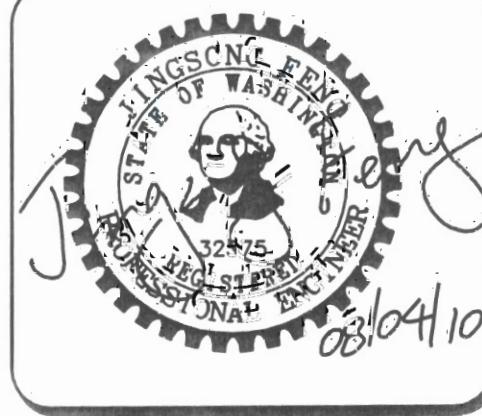


NOTES:

- THE MINIMUM SEPARATION BETWEEN (PARALLEL PIPELINES) WATER MAIN, WATER SERVICE LINE AND PRESSURE SEWER FACILITIES (MUST BE BELOW WATER MAIN OR WATER SERVICE) MUST BE MET, ARE AS FOLLOWS: HORIZONTAL >=10' MEASURED EDGE TO EDGE VERTICAL >=18" MEASURED EDGE TO EDGE.
- THE MINIMUM SEPARATION BETWEEN (CROSSING PIPELINES) WATER MAIN, WATER SERVICE LINE AND PRESSURE SEWER FACILITIES (MUST BE BELOW WATER MAIN OR WATER SERVICE) MUST BE MET, ARE AS FOLLOWS: HORIZONTAL >=10' MEASURED EDGE TO EDGE VERTICAL >=18" MEASURED EDGE TO EDGE.
- IF THE EXISTING WATER IS AC PIPE, IT SHALL BE REPLACED WITH SAME SIZE DUCTILE IRON PIPE 10 FEET EACH SIDE OF SEWER CROSSING BUT NO LESS THAN 2 FEET INTO BOTH TRENCH WALLS (NO CDF CRADLE ALLOWED).
- LOCATION OF EXISTING UNDERGROUND UTILITIES WAS PROVIDED BY UTILITY LOCATE AND BY AS BUILT RECORDS. UTILITY PAINT MARKS WERE FIELD SURVEYED BY CES NW INC.
- OTHER UTILITY SEPARATION BETWEEN PRESSURE SEWER FACILITIES MUST BE MET, ARE AS FOLLOWS: HORIZONTAL >=3' MEASURED EDGE TO EDGE VERTICAL >=6", MEASURED EDGE TO EDGE.
- FOR PARCELS IN PEPPER HILL ESTATES AREAS, EXISTING PARCEL NUMBERS AND LOT NUMBERS WILL BE UPDATED AFTER BOUNDARY LINE ADJUSTMENTS ARE RECORDED.
- ALL CLEANOUTS W/PIG PORTS ARE USED AS TRACE WIRE STATIONS.
- FRAMES AND COVERS FOR CLEANOUTS/PIGPORTS NOT SUBJECT TO VEHICULAR TRAFFIC SHALL BE SET 6" ABOVE FINISHED GRADE AND BE PROTECTED BY VALVE BOX PROTECTIVE PADS.
- INSTALL APPROXIMATELY 4300 LF ± OF 2" HDPE DR11 FORCE MAIN AT THE SAME TRENCH OF THE 6" HDPE DR11 FORCE MAIN FROM SSMH #10 (S-1727) TO THE RAM NIWAS CHURCH. HORIZONTAL SEPARATION BETWEEN 2" AND 6" FORCE MAINS SHOULD BE 2' ± AND AS CONSISTENT AS POSSIBLE. PIPE CROWN ELEVATIONS SHOULD MATCH. TRACER WIRE AND TRACER WIRE STATIONS ONLY APPLY TO THE 6" FORCE MAIN.



LAKEHAVEN UTILITY DISTRICT
 0 Water Plan 8 Sewer Plan
 Dated _____
 APPROVED FOR CONSTRUCTION
 SUBJECT TO CHANGES NOTED
 The District's review is for a check of any dimension or quantities and will not relieve the Developer from responsibility for errors of any kind. No changes shall be made in the plans except by the consent of the District.
 General Manager/District Engineer Date
 This construction plan will expire one year from plan approval date, if construction has not commenced.



15445 53RD AVE S.
 SEATTLE, WA 98188
 PHONE: (206) 431-7970
 FAX: (206) 388-1648
 WEB SITE: PACENG.COM

Pacific Engineering Design, LLC
 Civil Engineering and Planning Consultants

LAKEHAVEN UTILITY DISTRICT PROJECT No. XXXXXXXXX
RAM NIWAS CHURCH
 KING COUNTY, WA.

FOR: SATGURU RAM SINGH STANG
 1801 BERTH PLACE SE
 BELLEVUE, WA 98006
 PHONE: (206) 304-1911

PROJECT NO.: 05052
 DRAWN BY: JGC
 ISSUE DATE: 7-23-2010
 SHEET REV.: 8-04-2010

FORCE MAIN SANITARY SEWER
 S 360TH ST
 STA. 171+00.70 TO STA. 181+07.00
 PLAN AND PROFILE

SS03