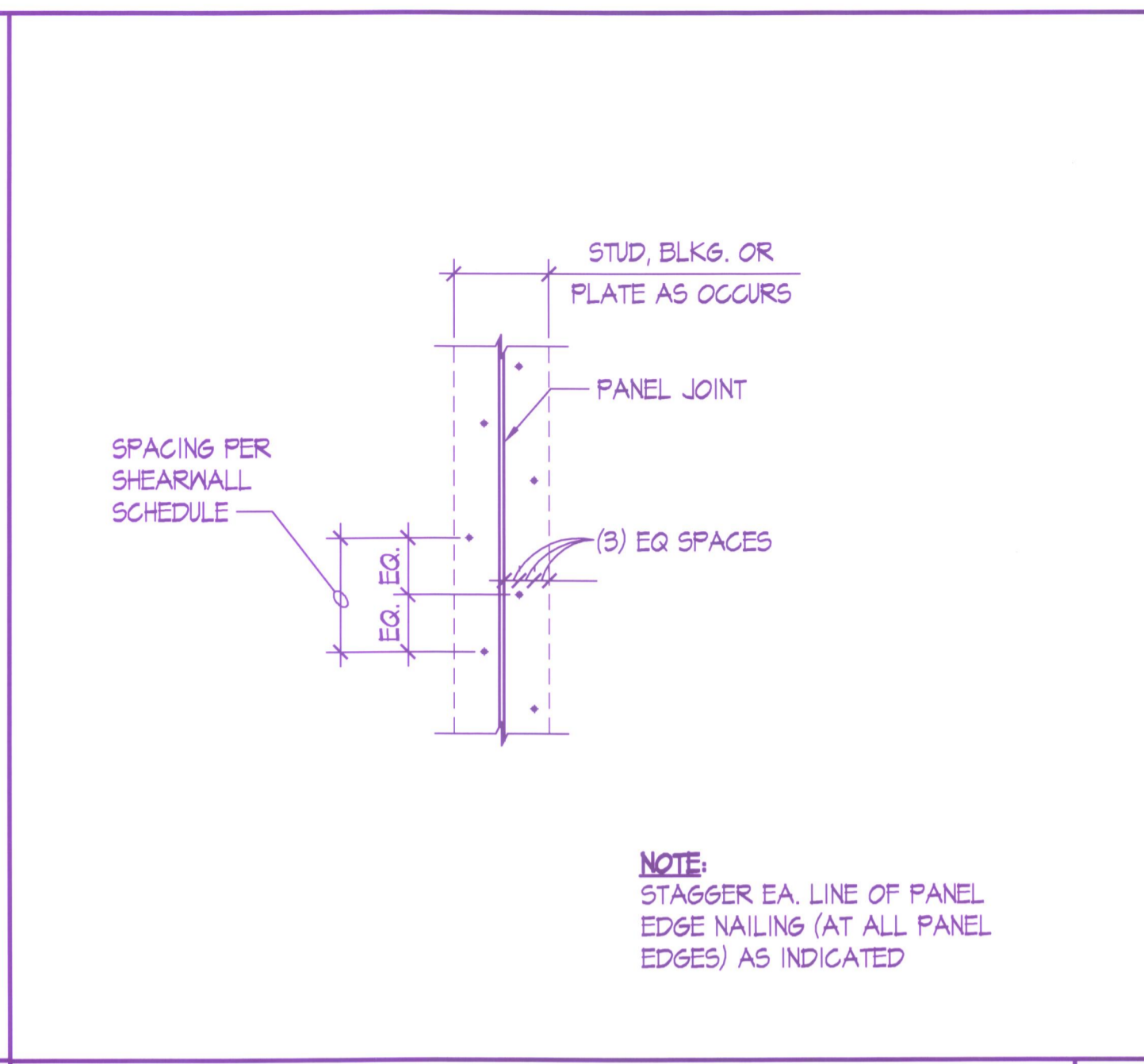
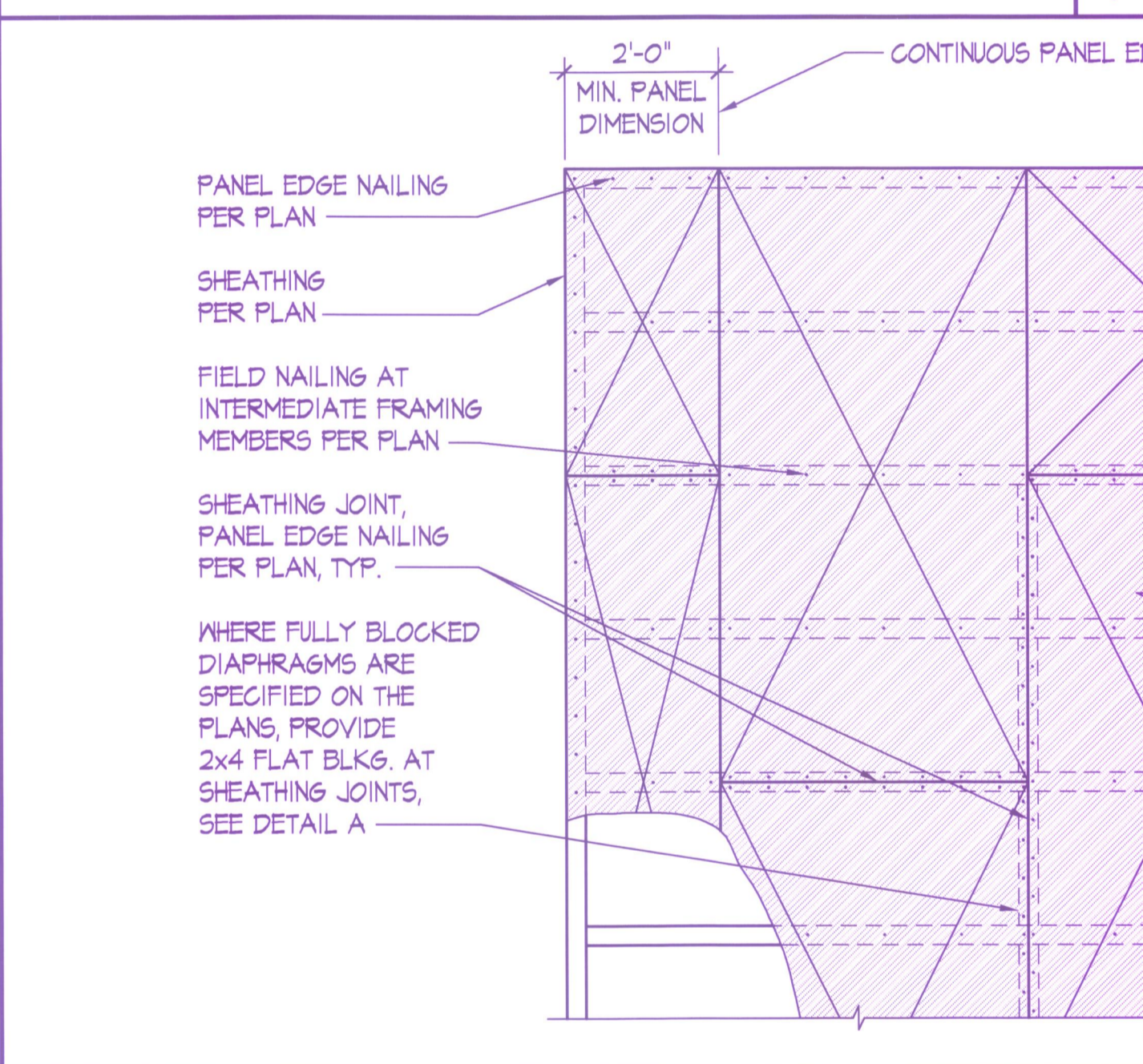


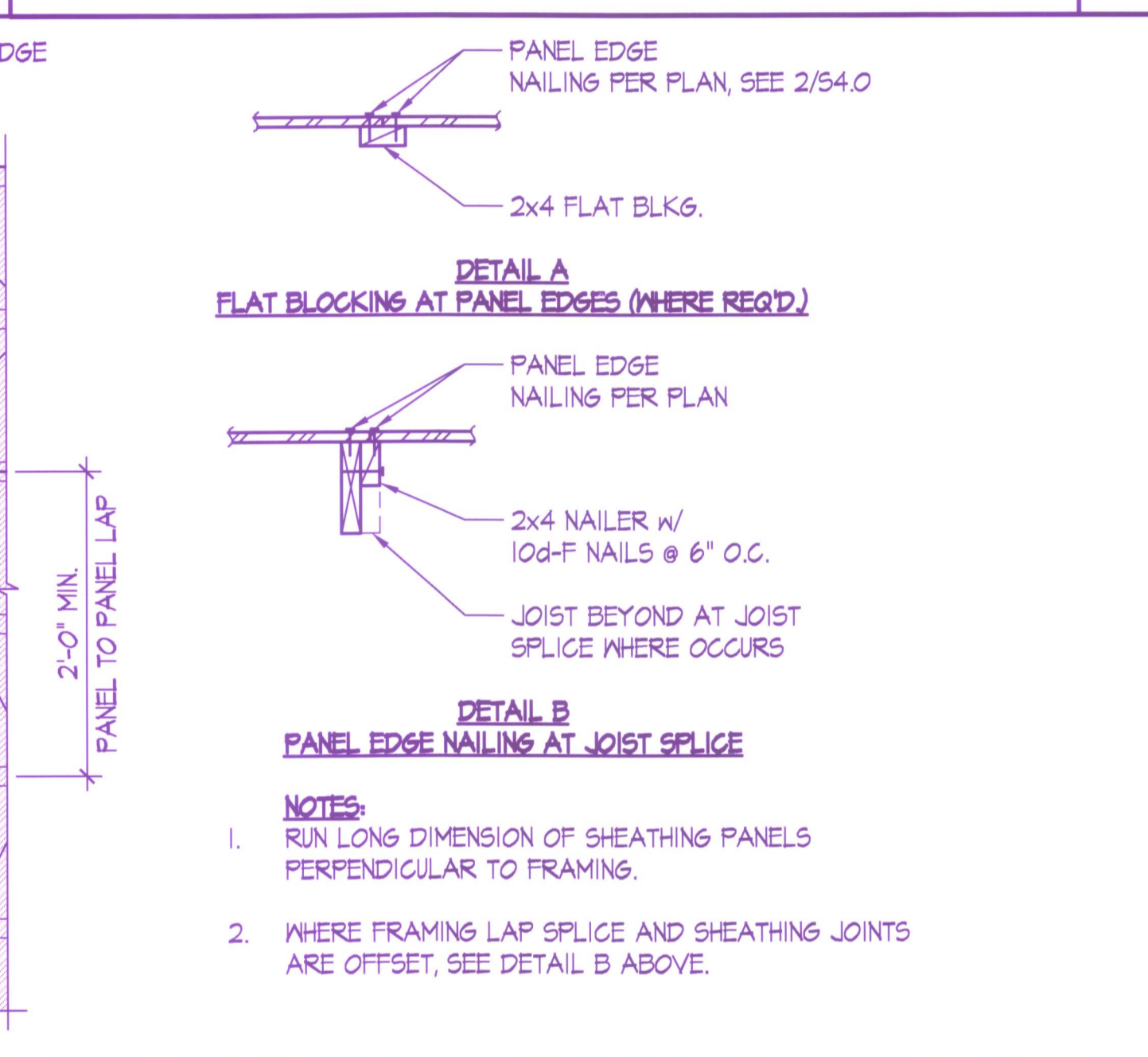
TYPICAL SILL PLATE BOLTING - PLAN VIEW SCALE: NONE



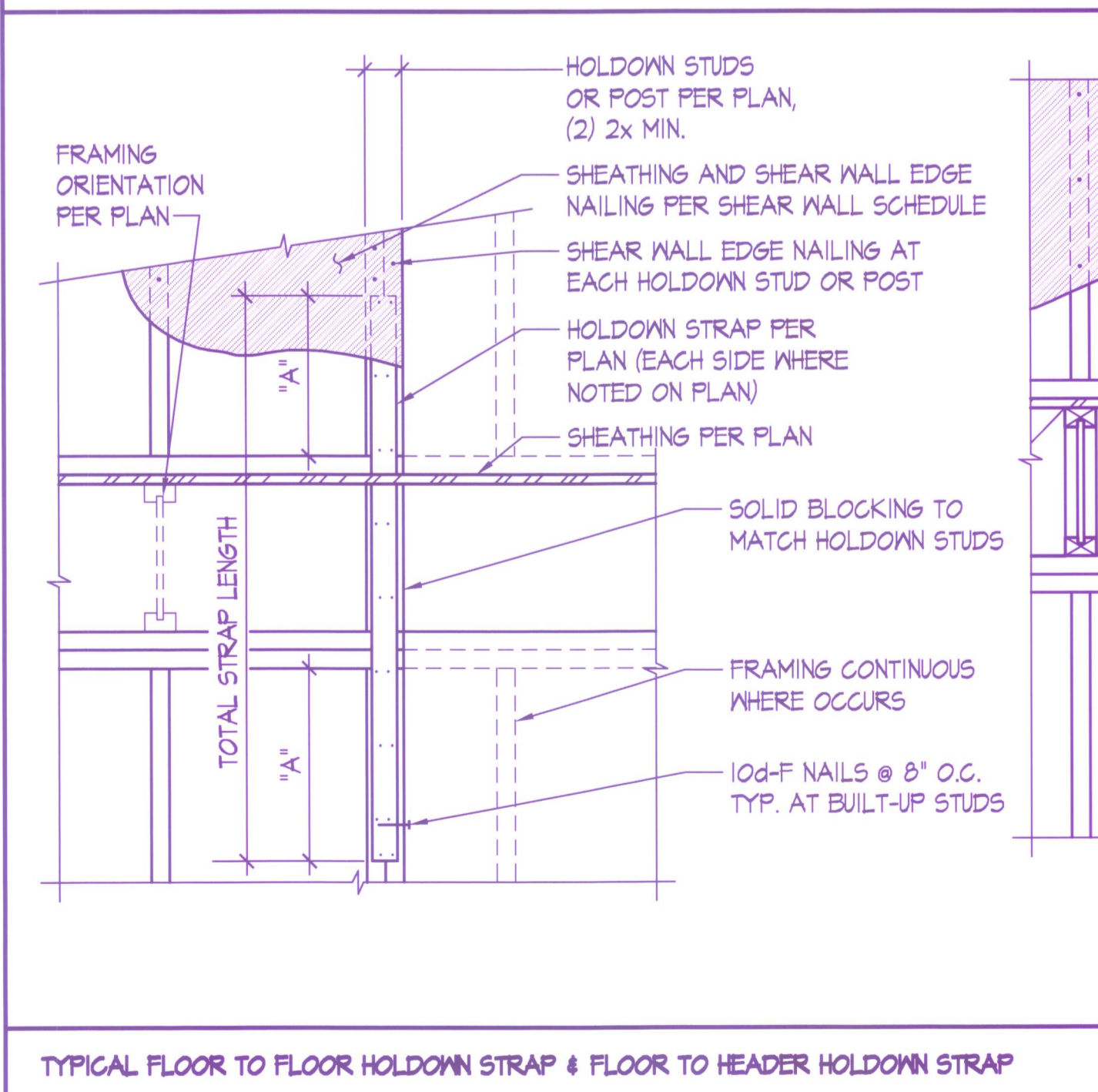
TYPICAL STAGGERED NAILING SCALE: NONE **2**



TYPICAL ROOF AND FLOOR DIAPHRAGM SHEATHING SCALE: NONE **6**



SCALE: NONE **6**



TYPICAL FLOOR TO FLOOR HOLDOWN STRAP & FLOOR TO HEADER HOLDOWN STRAP SCALE: NONE **10**

HOLDOWN STRAP	MIN. NUMBER OF NAILS EACH END	MIN. STRAP END LENGTH 'A'
MSTC48B3	(38) 16d SINKERS *	1'-9"
CS16	(15) 8d	1'-4"
CMSTC16	(30) 16d SINKERS	2'-4"
MSTC18	(38) 16d SINKERS	2'-6"
CMST14	(38) 16d SINKERS	3'-0"

* (38) INTO STUDS, (12) INTO BEAM FACE, (4) INTO BEAM BOTTOM

0348 0352 0363

SHEAR WALL TYPE	SHEAR WALL SHEATHING (1)	PANEL EDGE FRAMING (2)	PANEL EDGE NAILING (3)	BOTTOM PLATE ATTACHMENT		TOP PLATE ATTACHMENT		
				2x BOTTOM PLATE CONNECTION TO RIM JOIST OR BLOCKING BELOW (10)	ANCHOR BOLTING OF SILL PLATE TO CONCRETE BELOW (4)(5)		RIM JOIST OR BLOCKING CONNECTION TO TOP PLATE (6)	
					3x PLATE	2x PLATE	INTERIOR WALL	EXTERIOR WALL
SW-6	15/32" APA ONE-SIDE SHTG.	2x	0.148"φx3" @ 6" O.C.	0.148"φx3 1/4" @ 6" O.C.	N/A	3/8"φ @ 48" O.C.	A35 @ 16" O.C.	LTP4 @ 16" O.C.
SW-4	15/32" APA ONE-SIDE SHTG.	3x OR (2) 2x (7)	0.148"φx3" @ 4" O.C. (8)	0.148"φx3 1/4" @ 4" O.C. (10)	3/8"φ @ 48" O.C.	3/8"φ @ 16" O.C.	A35 @ 16" O.C.	LTP4 @ 16" O.C.
SW-3	15/32" APA ONE-SIDE SHTG.	3x	0.148"φx3" @ 3" O.C. (8)	0.148"φx3 1/4" @ 3" O.C. (10)	3/8"φ @ 32" O.C.	N/A	A35 @ 12" O.C.	LTP4 @ 12" O.C.
SW-2	15/32" APA ONE-SIDE SHTG.	3x	0.148"φx3" @ 2" O.C. (8)	(2) ROWS 0.148"φx3 1/4" @ 4" O.C. STAGGERED (11)	3/8"φ @ 24" O.C.	N/A	A35 @ 8" O.C.	LTP4 @ 8" O.C.

NOTES:

- INSTALL PANEL SHEATHING EITHER HORIZONTALLY OR VERTICALLY FOR THE ENTIRE LENGTH OF THE WALL PER PLAN.
- ALL INTERMEDIATE WALL STUDS SHALL BE PER PLAN. PROVIDE BACKING FRAMING AT ALL PANEL EDGES INCLUDING HORIZONTAL BLOCKING PER THE SCHEDULE.
- PROVIDE NAILING TO ALL PANEL EDGES, TOP & BOTTOM PLATES AND HORIZONTAL BLOCKING. PROVIDE THE SAME NAILING PATTERN TO EACH MULTIPLE STUD OF THE BUILT-UP HOLD DOWN POST. NAIL PANEL TO INTERMEDIATE FRAMING MEMBERS W/ 0.131"φ x 2 1/2" @ 12" O.C.
- EMBED CAST-IN-PLACE 5/8"φ ANCHOR BOLTS 7" MIN. (OR EMBED ADHESIVE ANCHOR BOLTS 5 1/2" IN (E) CONCRETE; SEE STRUCTURAL NOTES). PROVIDE PLATE WASHER 3" x 3" x 1/4" AT EACH ANCHOR BOLT. SILL PLATES SHALL BE TREATED PER GENERAL NOTES, AND SHALL BE 2x OR 3x PER THE SCHEDULE. SEE DETAIL 1/54.0 FOR OTHER REQUIREMENTS.
- PROVIDE HOT DIPPED GALVANIZED NAILS, BOLTS, OR METAL PLATES FOR ALL CONNECTORS IN CONTACT WITH PRESSURE TREATED MEMBERS.
- PROVIDE 0.131"φ x 1-1/2" LONG NAILS FOR CLIPS DIRECTLY ATTACHED TO FRAMING MEMBERS; PROVIDE 0.131"φ x 2-1/2" LONG NAILS FOR CLIPS INSTALLED OVER FLOOR OR WALL SHEATHING ON FRAMING MEMBERS. SEE 6/54.1 FOR TOP PLATE SPLICE.
- ALTERNATIVE TO 3x STUDS FOR THIS WALL ONLY IS (2) 2x STUDS NAILED TOGETHER WITH 0.148"φ x 3" LONG NAILS WITH THE SAME SPACING AS THE PANEL EDGE NAILING PER THE SCHEDULE (STAGGER).
- STAGGER THE PANEL EDGE NAILS PER 2/54.0.
- RIM JOIST/BLOCKING MINIMUM WIDTH OF 1 3/4" .
- RIM JOIST/BLOCKING MINIMUM WIDTH OF 1 3/4" AT EXTERIOR WALLS, 3/2" AT INTERIOR WALLS. STAGGER NAILS SIMILAR TO 2/54.0.

SPECIAL INSPECTION REQUIRED SEE ATTACHED CHECK LIST

HOLDOWN	ANCHOR BOLT φ	ANCHOR BOLT IN CONCRETE EMBED LENGTH	CONNECTORS TO HOLDOWN STUDS
HDU2	5/8"φ	13"	(6) SDS 1/4"x2 1/2" SCREWS
HDU4	5/8"φ	13"	(10) SDS 1/4"x2 1/2" SCREWS
HDU5	5/8"φ	13"	(14) SDS 1/4"x2 1/2" SCREWS
HDU8	7/8"φ	18"	(20) SDS 1/4"x2 1/2" SCREWS
HDQ8	7/8"φ	20"	(20) SDS 1/4"x3" SCREWS

NOTE: PROVIDE HOT DIPPED GALVANIZED NAILS, BOLTS, OR METAL PLATES FOR ALL CONNECTORS IN CONTACT WITH PRESSURE TREATED MEMBERS.

TYPICAL HOLDOWN TO CONCRETE SCALE: NONE **12**

File: L36-r402.dwg PlotDate: Tue, 06/20/2011 12:22 PM



PROJECT:
RAM NIWAS CHURCH

AUBURN, WA 98001

OWNER: SATGURU RAM SINGH SATSUNGH
Contact Person: Mr. Sukhdev Aulekh
Contact Phone: (425) 255-6476

SHEET NOTES:

PERMIT SUBMITTAL	8/2/11

NO.	DESCRIPTION	DATE	BY

TYPICAL WOOD DETAILS

SHEET NO.

S4.0R

REVISION