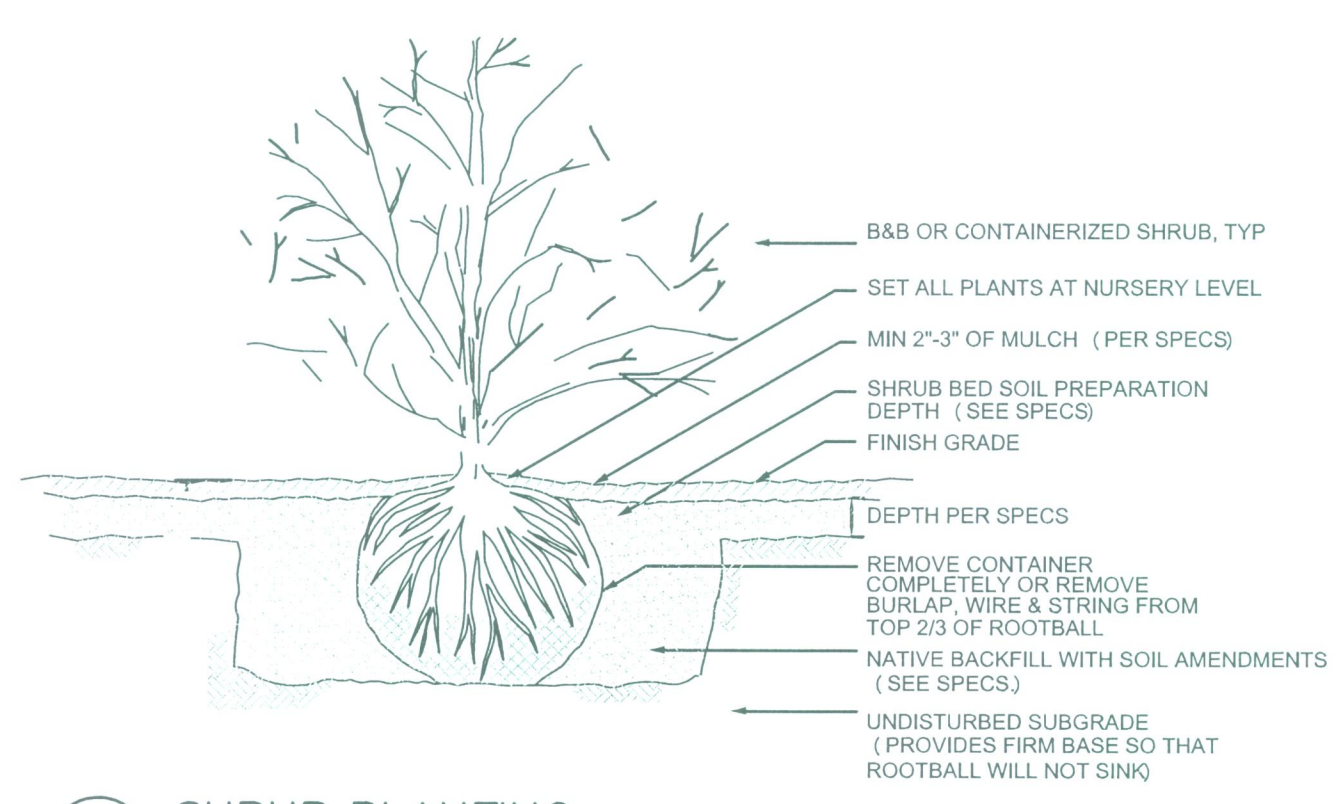
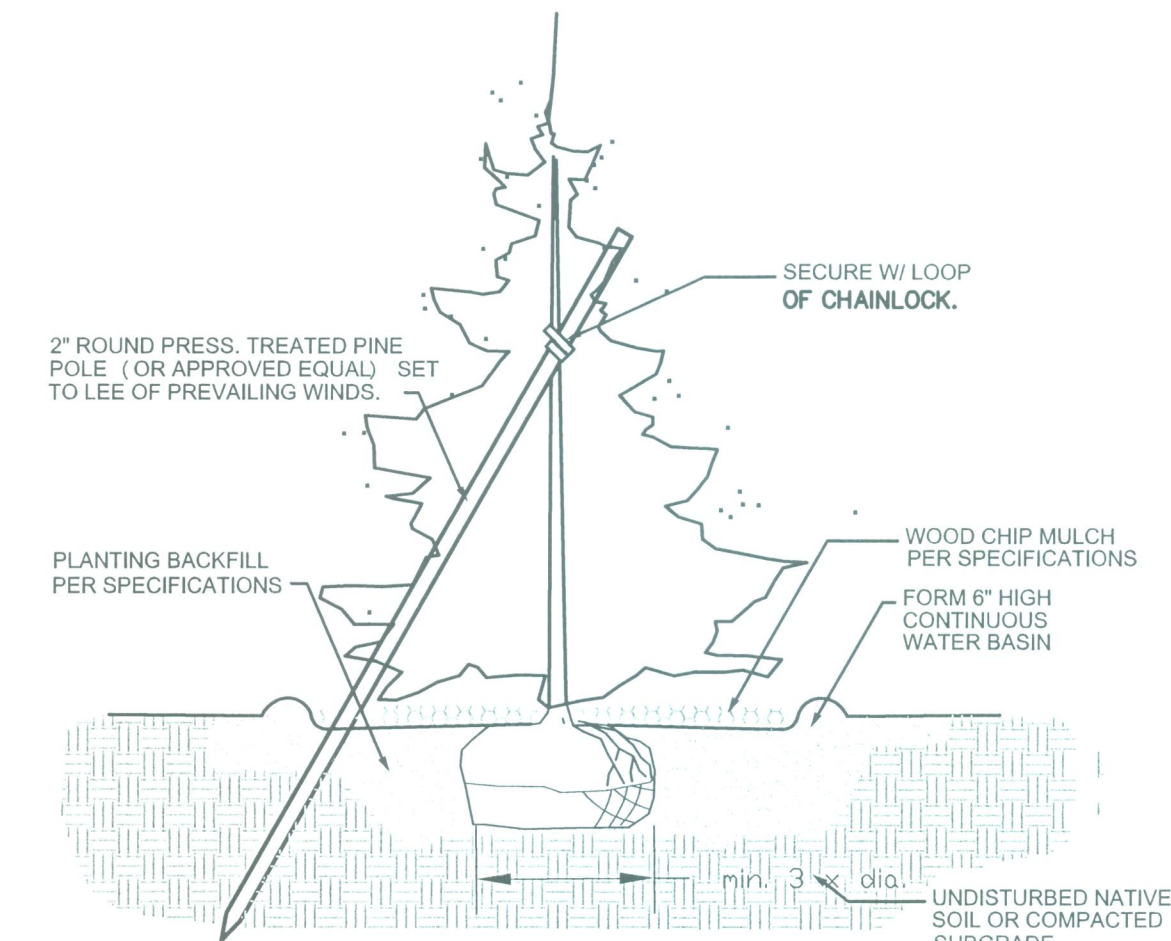


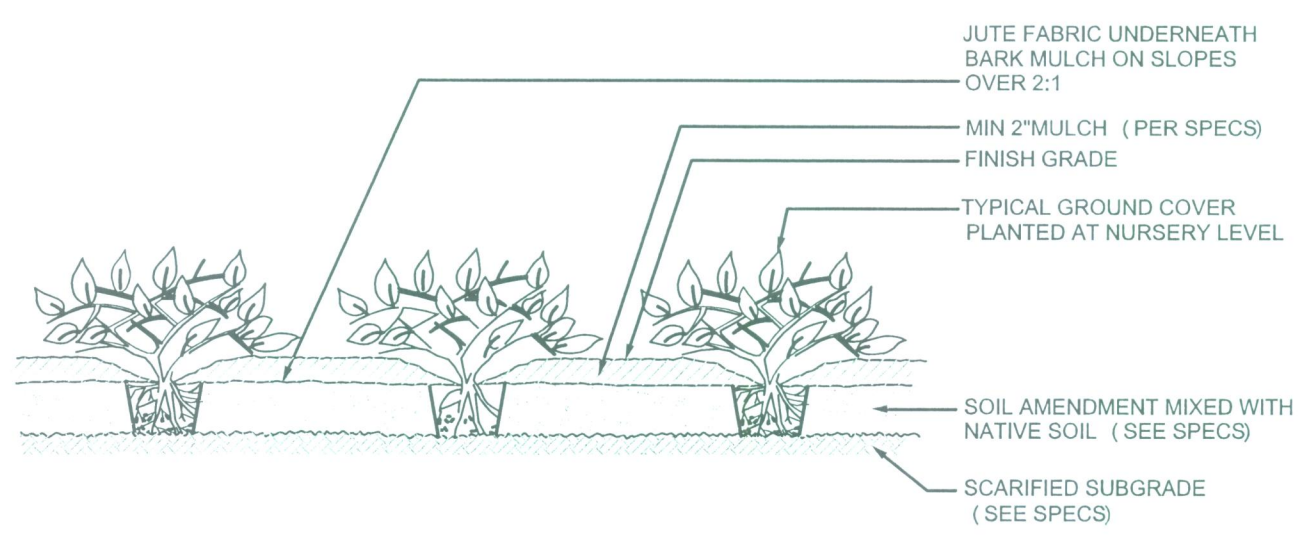
1 DECIDUOUS TREE PLANTING
NOT TO SCALE



3 SHRUB PLANTING
NOT TO SCALE



2 CONIFER TREE PLANTING
NOT TO SCALE



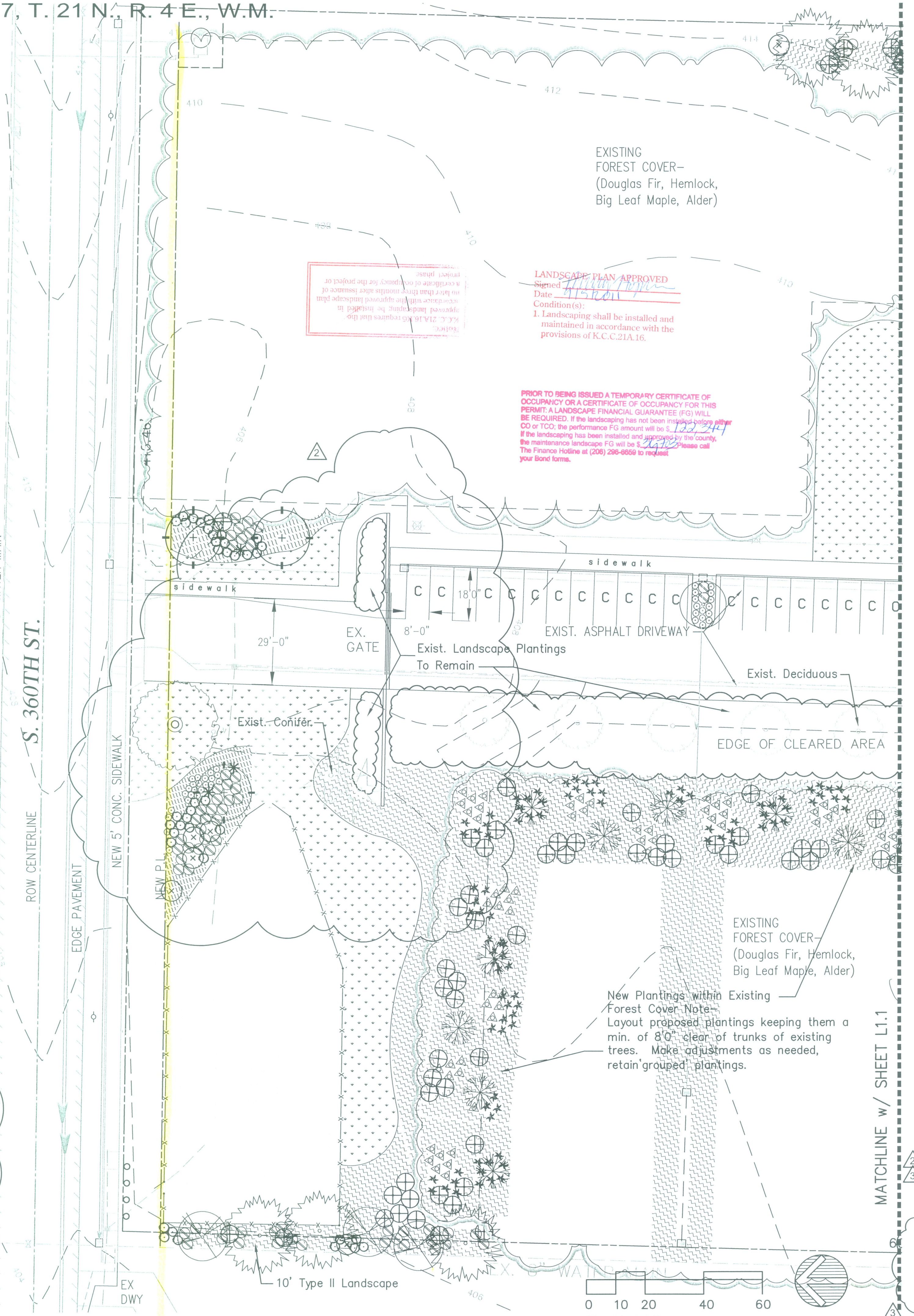
4 GROUND COVER PLANTING
NOT TO SCALE

TREES:		
6	Acer griseum / PAPERBARK MAPLE	min. 2" cal., single trunk
15	Acer Circinatum / VINE MAPLE	min. 1-1/2" cal., single trunk
13	Cercis canadensis / EASTERN REDBUD	min. 1.75" cal.
24	Pseudotsuga menziesii / DOUGLAS FIR	min. 5'-0" hgt.
1	Quercus alba / WHITE OAK	min. 2" cal., single trunk
3	Zelkova s. 'Mushashino' / COLUMNAR ZELKOVA	min. 1.75" cal., single trunk
SHRUBS / GROUNDCOVERS:		
89	Mahonia aquifolium / TALL OREGON GRAPE	min. 12" hgt., spr., compact
133	Epimedium x versicolor 'Sulphureum' / NCN	min. 1 gal., full.
142	Ilex c. 'Convexa' / BOXLEAF JAPANESE HOLLY	min. 2 gal.
3	Miscanthus s. 'Morning Light' / MAIDEN GRASS	min. 5 gal.
38	Myrica californica / PACIFIC WAX MYRTLE	min. 5 gal., 30" hgt.
30	Potentilla f. 'Abbotswood' / CINQUEFOIL	min. 2 gal.
192	Polystichum munitum / WEST. SWORD FERN	min. 5 fronds @ 12"
133	Ribes sanguineum / RED FLOWERING CURRANT	min. 2 gal.
8519	Gaultheria shallon / SALAL	1 gal. pots @ 18" o.c. tri-spacing
246	Mahonia repens / CREEPING MAHONIA	1 gal. pots @ 18" o.c. tri-spacing
as required	Lawn	

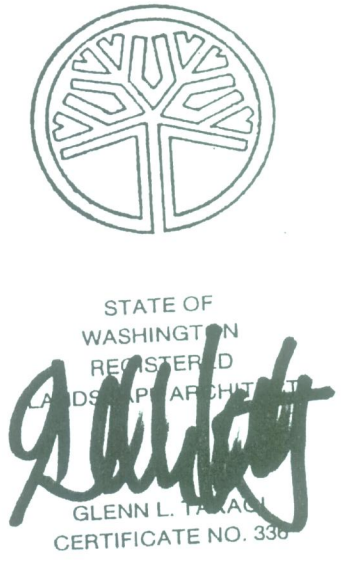
* Plant sizes are specified per the American Standard for Nursery Stock, Publication-May 2, 1986 sponsored by the American Association of Nurserymen, Inc.
 * If plant count represented by symbol differs from quantity shown in Plant Schedule, the quantity per symbol shall be used.
 * All plant materials selected are either Native or considered Drought Tolerant except lawn.

Parking Calculations:
 Parking Spaces Required- 63 Stalls
 3158 s.f. Bldg. floor Area / 50 = 63 Stalls Required
 Parking Provided- 76 Stalls (incl. 3 Garage Stalls)
 Compact- 24
 Standard- 45
 HCP- 3
 Van- 1
 (Garage- 3)

Parking Lot Landscape Calculations:
 Interior Landscape Beds Required- 2275 s.f.
 73 stalls x 25 s.f./ stall = 1475 s.f.
 Interior Landscape Beds Provided- 2894 s.f.
 Interior Trees Required- 12
 1 tree per 5 stalls = 12 Trees Req'd.
 Interior Trees Provided- 17



Ram Niwas Church
 4511 So. 360th Street
 Auburn, WA



Glenn Takagi
 Landscape Architect
 18550 Firlands Way N.
 Suite #102
 Shoreline, WA 98133
 (206) 572-6100
 FAX: (206) 510-1128

Planting Plan-
 Northern Portion

Project No.: _____
 Drawn: GT
 Checked: GT

Drawing Issue:
 9.20.10-B. Permit
 5.31.11-B. Permit 2
 6.17.11-B. Permit 2r
 7.22.11-B. Permit 3r

Revisions:
 5.31.11- Parking Rev.
 6.17.11- Gate
 7.22.11

Sheet
L 1.0
 2 of 2

REVISION