

CODE COMPLIANCE

GENERAL

Ground floor all at same elevations and flush with exterior grade.

EXITING

Section 1004

Occupant Load

Table 1004.1 Assembly without fixed seats 7sf net.
 2nd floor worship space 1,732 sf / 7=246 occupants
 1st floor Dining Hall 1,295 sf / 7=185 occupants

Section 1005.1

Egress Width

2nd floor worship space 246 Occ. x 0.3" = 73.8" required egress width.
 Provided 57" at front doors + 34" at door to dining hall for total of 91"
 1st floor Dining Hall 185 Occ x 0.3" = 55.5" required egress width.
 Provided 34" at west wall + 34" at north wall for total of 68"

Section 1007

Accessible Means of Egress

1007.2 Continuity and components
 No. 2 Stairways within vertical exit enclosures complying with Sections 1007.3 and 1020

Section 1007.3 Exit stairways

Exception #2 - The area of refuge is not required at unenclosed exit stairways as permitted by section 1020.1 in buildings of facilities that are equipped throughout with an automatic sprinkler system installed in accordance with Section 903.3.1.1

Section 1020

Vertical Exit Enclosures

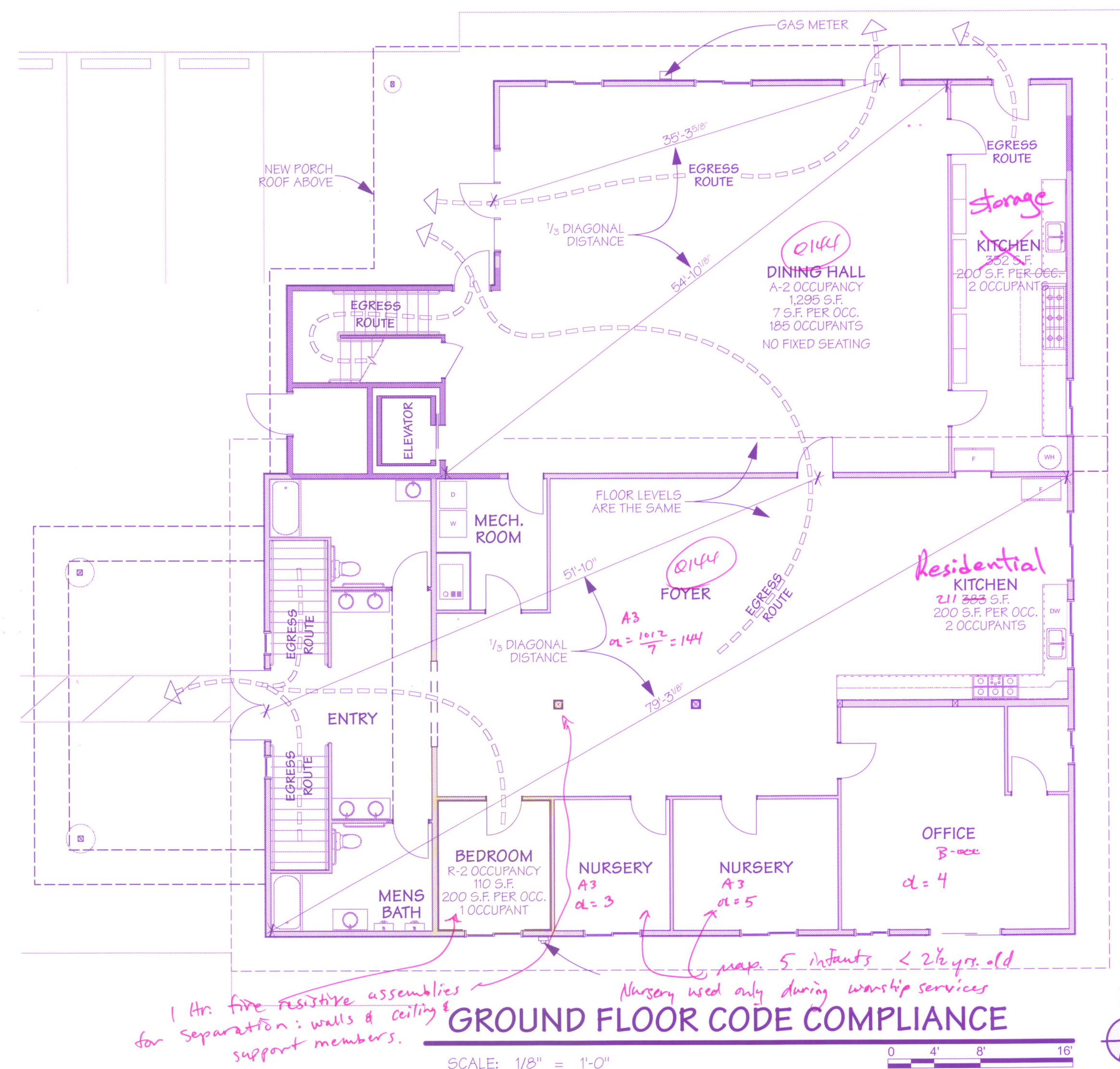
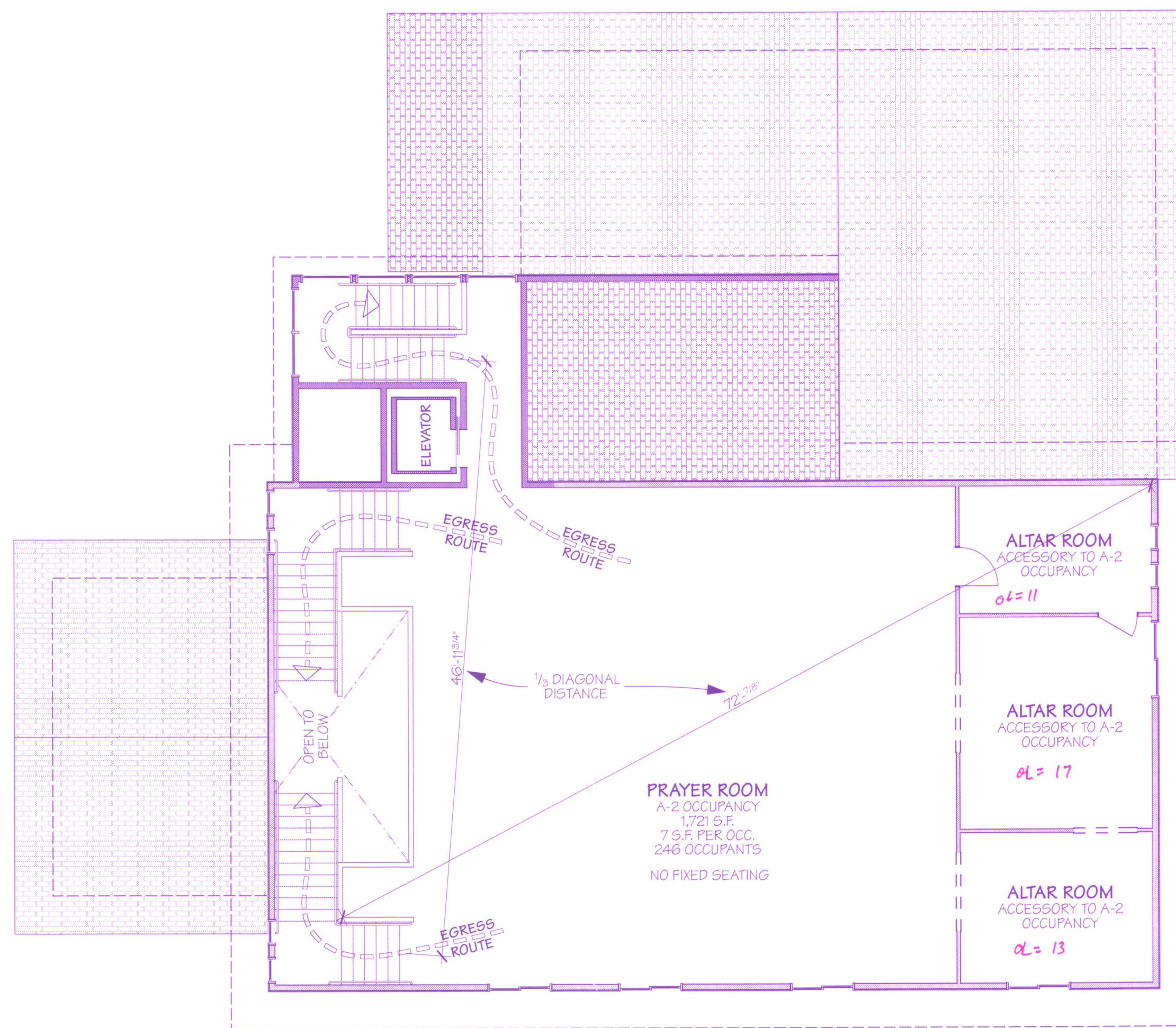
Section 1020.1 exception #9 - In other than Group H and I occupancies, interior egress stairways serving only the first and second stories of a building equipped throughout with an automatic sprinkler system in accordance with Section 903.3.1.1 are not required to be enclosed, provided at least two means of egress are provided. Such inter-connected stories shall not be open to other stories. Unenclosed exit stairways shall be remotely located as required in Section 1015.2

Section 1015

Exit and Exit Access Doorways

Section 1015.1 Exit and exit access doorways required - per table 1015.1
 2 exits required.

Section 1015.2.1 exception #2 - Where a building is equipped throughout with an automatic sprinkler system in accordance with Section 903.3.1.1 or 903.3.1.2, the separation distance of the exit doors or exit access doorways shall not be less than one-third of the length of the maximum overall diagonal dimension of the area served.



*Kitchen changed to storage per request from the applicant (9/20)
 See main file for a copy of the letter.
 Sherie Sabour
 9/21/11*

REVISION