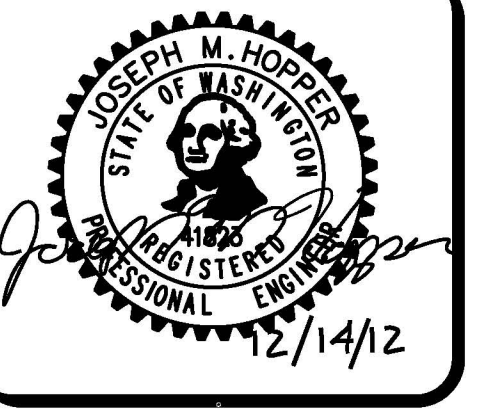
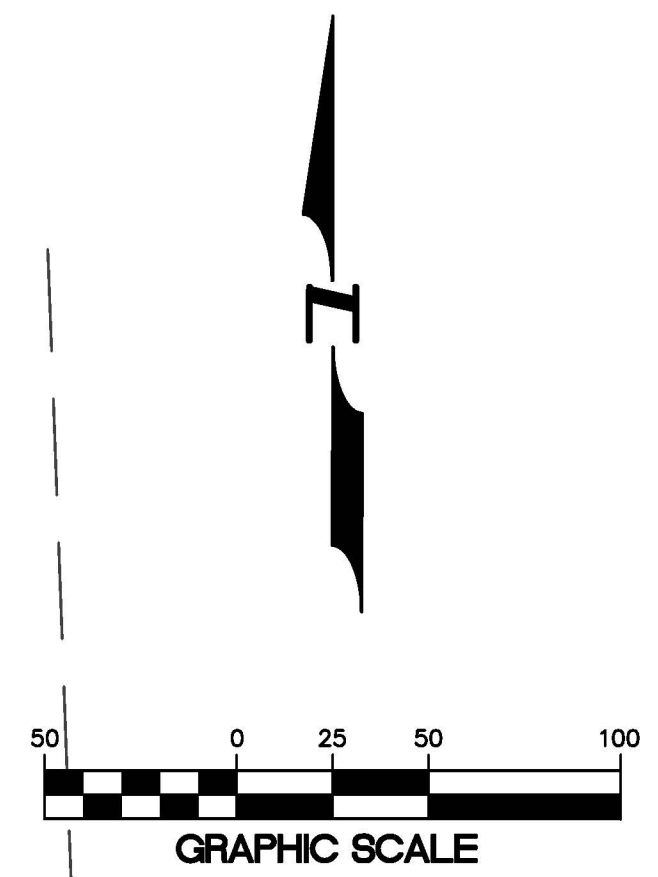
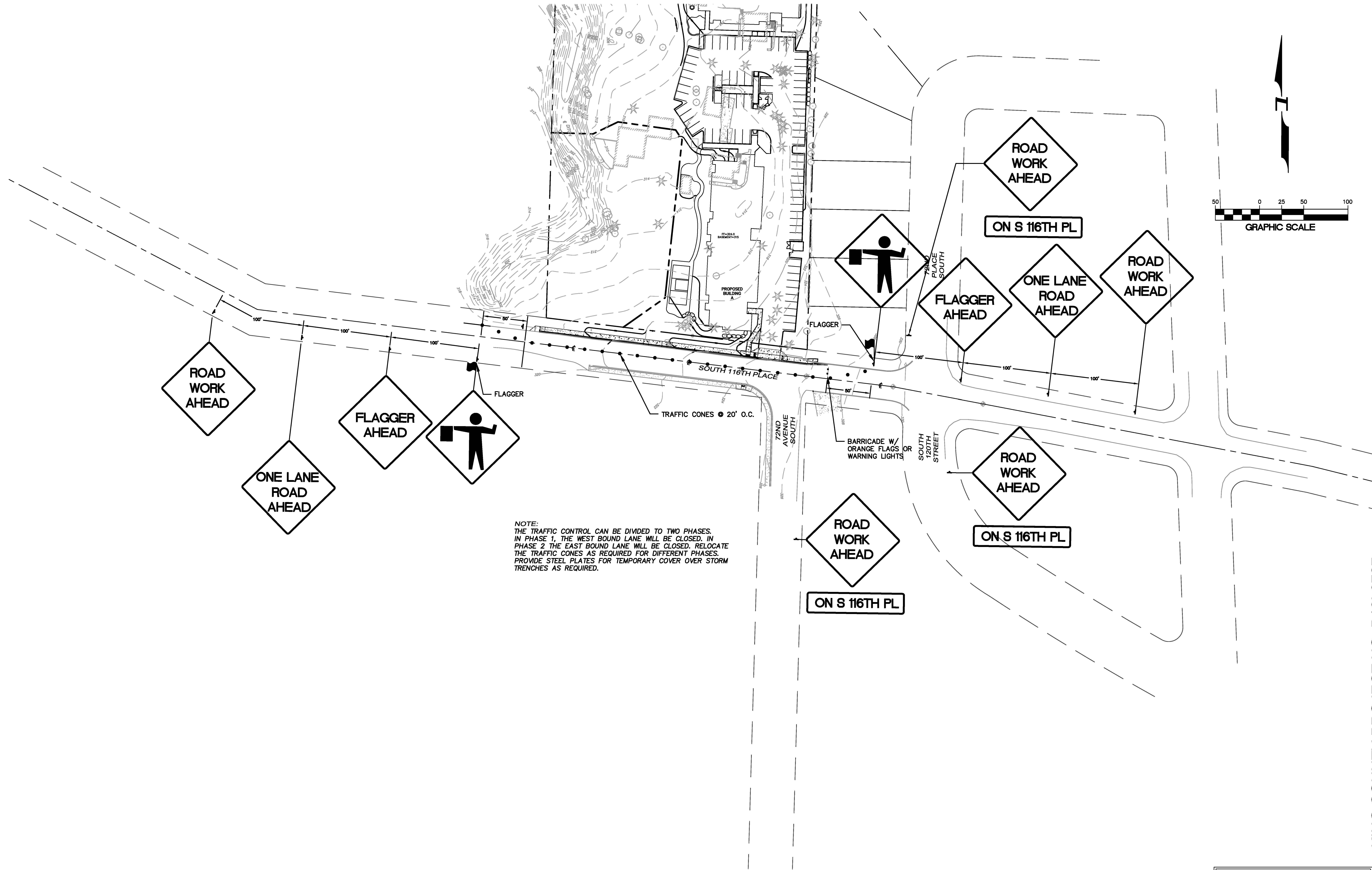


THE SW CORNER OF THE SW 1/4, NW 1/4, SEC. 12, TWP. 23 N., RGE. 04 E., W.M.



Phone: (206) 431-7970 Fax: (206)388-1648  
15445 53RD Ave. S. Seattle, WA 98188 www.paceeng.com



NOTE:  
THE TRAFFIC CONTROL CAN BE DIVIDED TO TWO PHASES.  
IN PHASE 1, THE WEST BOUND LANE WILL BE CLOSED. IN  
PHASE 2 THE EAST BOUND LANE WILL BE CLOSED. RELOCATE  
THE TRAFFIC CONES AS REQUIRED FOR DIFFERENT PHASES.  
PROVIDE STEEL PLATES FOR TEMPORARY COVER OVER STORM  
TRENCHES AS REQUIRED.

KING COUNTY PROJECT NO: B10L0727

Taylor Creek Apartments  
KING COUNTY  
RYAN GROUWS  
G3 INVESTMENTS, LLC  
P.O. BOX 78448  
SEATTLE, WA 98178  
Phone: (425) 255-5747  
Fax: (425) 255-4882

PROJECT NO.: 10018  
DRAWN BY: ENM  
ISSUE DATE: 11-30-2011  
SHEET REV.: 2012-12-14

TRAFFIC CONTROL PLAN

KING COUNTY DPER APPROVAL	
Review Engineer	Date
Senior Engineer	Date
Molly A. Johnson, P.E. DEVELOPMENT ENGINEER	Date

10018TRAFF.DWG  
**TC1**  
SHEET 1 OF 1