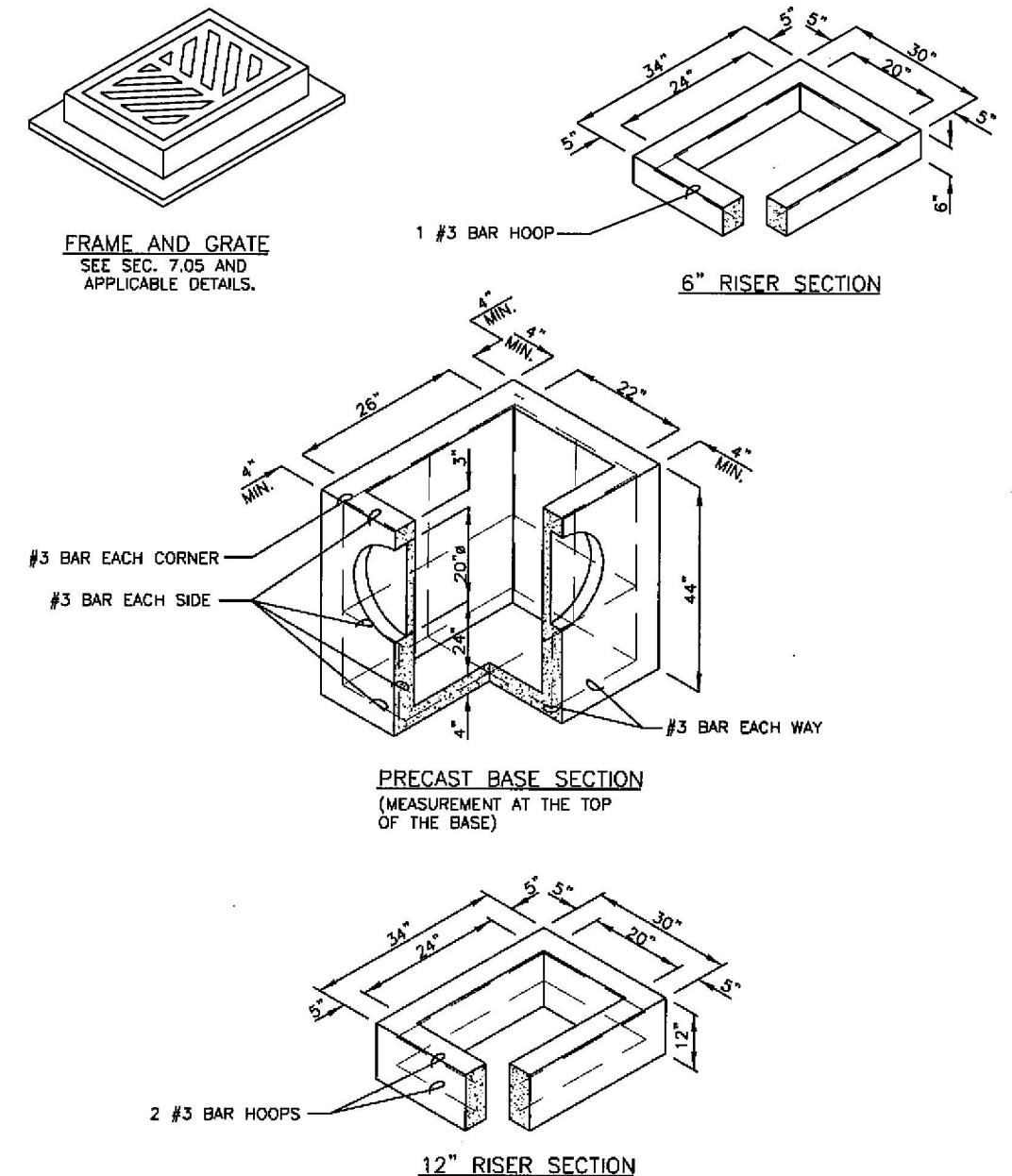
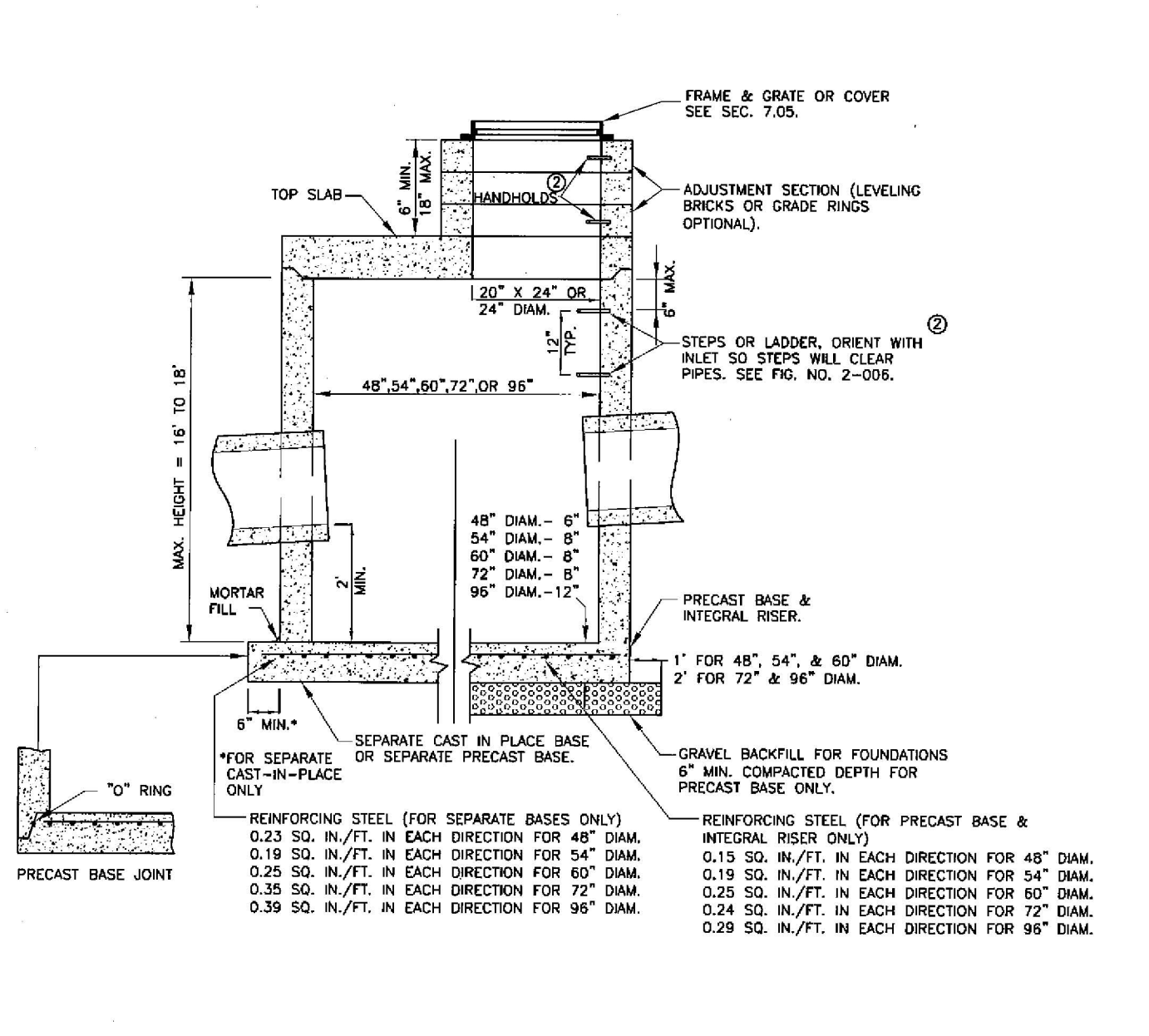


THE SW CORNER OF THE SW 1/4, NW 1/4, SEC. 12, TWP. 23 N., RGE. 04 E., W.M.



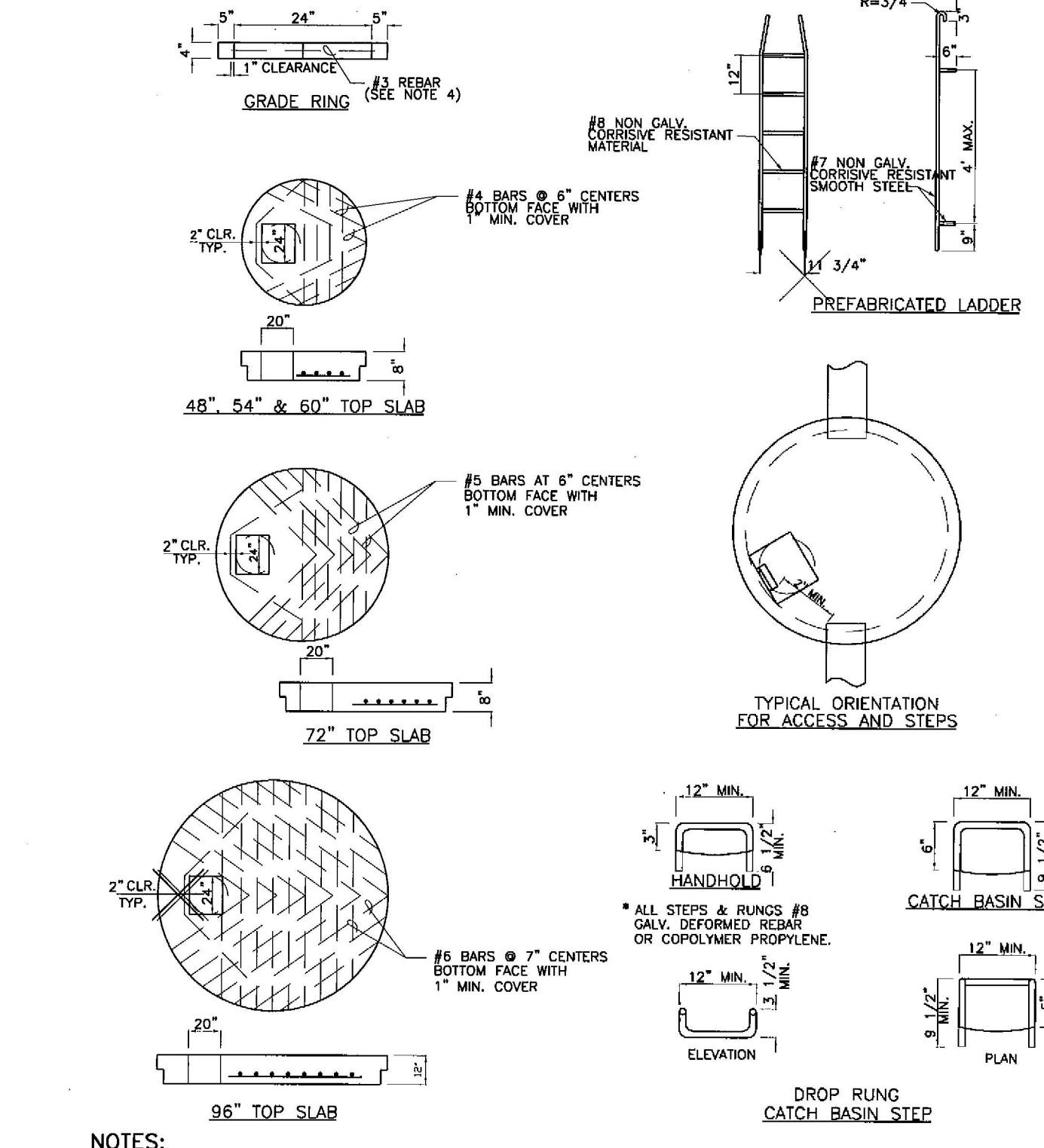
- NOTES: 1. CATCH BASINS SHALL BE CONSTRUCTED IN ACCORDANCE WITH ASTM C478 (ASTM M 199) & C890 UNLESS OTHERWISE SHOWN ON PLANS OR NOTED IN THE WSDOT/APWA STANDARD SPECIFICATIONS. 2. AS AN ACCEPTABLE ALTERNATIVE TO REBAR, WELDED WIRE FABRIC HAVING A MIN. AREA OF 0.12 SQ. IN. PER FT. MAY BE USED. WELDED WIRE FABRIC SHALL CONFORM TO ASTM A497 (ASTM M 221). WIRE FABRIC SHALL NOT BE PLACED IN KNOCKOUTS. 3. ALL REINFORCED CAST-IN-PLACE CONCRETE SHALL BE CLASS 4000. 4. PRECAST BASES SHALL BE FURNISHED WITH CUTOUTS OR KNOCKOUTS. KNOCKOUTS SHALL HAVE A WALL THICKNESS OF 2 IN. MIN. ALL PIPE SHALL BE INSTALLED IN FACTORY PROVIDED KNOCKOUTS. UNUSED KNOCKOUTS NEED NOT BE GROUDED IF WALL IS LEFT INTACT. 5. KNOCKOUT OR CUTOUT HOLE SIZE IS EQUAL TO PIPE OUTER DIAM. PLUS CATCH BASIN WALL THICKNESS. 6. ROUND KNOCKOUTS MAY BE ON ALL 4 SIDES, WITH MAX. DIAM. OF 20 IN. KNOCKOUTS MAY BE EITHER ROUND OR "D" SHAPE. 7. THE MAX. DEPTH FROM THE FINISHED GRADE TO THE PIPE INVERT IS 5 FT. 8. THE TAPER ON THE SIDES OF THE PRECAST BASE SECTION AND RISER SECTION SHALL NOT EXCEED 1/2" PER FT. 9. CATCH BASIN FRAME AND GRATE SHALL BE IN ACCORDANCE WITH STANDARD SPECIFICATIONS AND MEET THE STRENGTH REQUIREMENTS OF FEDERAL SPECIFICATION RR-F-620B. MATING SURFACES SHALL BE FINISHED TO ASSURE NON-ROCKING FIT WITH ANY COVER POSITION. 10. FRAME AND GRATE MAY BE INSTALLED WITH FLANGE DOWN OR CAST INTO RISER. 11. FOR CATCH BASINS IN PARKING LOTS REFER TO WSDOT/APWA STANDARD DWG. 81-8. 12. EDGE OF RISER OR BRICK SHALL NOT BE MORE THAN 2 IN. FROM VERTICAL EDGE OF CATCH BASIN WALL.

CATCH BASIN TYPE 1 FIG. 7-003 7-8



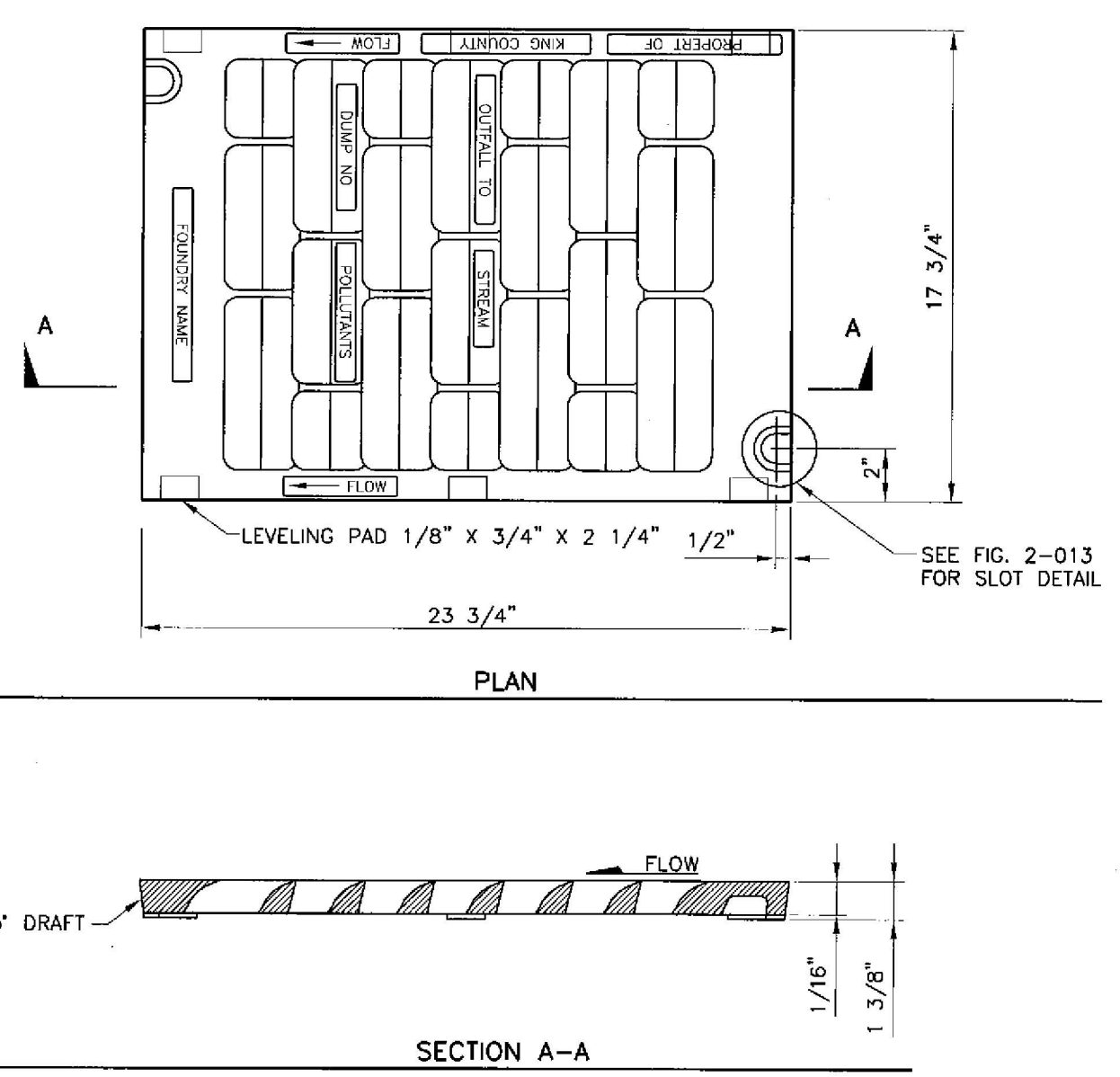
- NOTES: 1. CATCH BASINS SHALL BE CONSTRUCTED IN ACCORDANCE WITH ASTM C478 (ASTM M 199) AND ASTM C890 UNLESS OTHERWISE SHOWN ON PLANS OR NOTED IN THE WSDOT/APWA STANDARD SPECIFICATIONS. 2. HANDHOLES IN ADJUSTMENT SECTION SHALL HAVE 3" MIN. CLEARANCE. STEPS IN CATCH BASIN SHALL HAVE 8" MIN. CLEARANCE. SEE FIG. NO. 7-005 CATCH BASIN DETAILS. HANDHOLES SHALL BE PLACED IN ALTERNATING GRADE RINGS OR LEVELING BRICK COURSE WITH A MIN. OF ONE HANDHOLD BETWEEN THE LAST STEP AND TOP OF THE MANHOLE. 3. ALL REINFORCED CAST-IN-PLACE CONCRETE SHALL BE CLASS 4000. ALL PRECAST CONCRETE SHALL BE CLASS 4000. 4. PRECAST BASES SHALL BE FURNISHED WITH CUTOUTS OR KNOCKOUTS. KNOCKOUTS SHALL HAVE WALL THICKNESS OF 2 IN. MIN. UNUSED KNOCKOUTS NEED NOT BE GROUDED IF WALL IS LEFT INTACT. PIPES SHALL BE INSTALLED ONLY IN FACTORY KNOCKOUTS UNLESS OTHERWISE APPROVED BY THE ENGINEER. 5. KNOCKOUT OR CUTOUT HOLE SIZE SHALL EQUAL PIPE OUTER DIAM. PLUS CATCH BASIN WALL THICKNESS. MAX. HOLE SIZE SHALL BE 36 IN. FOR 48 IN. CATCH BASIN, 42 IN. FOR 54 IN. C.B., 48 IN. FOR 60 IN. C.B., 60 IN. FOR 72 IN. C.B., 84 IN. FOR 96 IN. C.B. MIN. DISTANCE BETWEEN HOLES SHALL BE 8 IN. FOR 48 IN., 54 IN. AND 60 IN. C.B.; 12 IN. FOR 72 IN. AND 96 IN. C.B. 6. CATCH BASIN FRAMES AND GRATES OR COVERS SHALL BE IN ACCORDANCE WITH SEC. 7.05 AND MEET THE STRENGTH REQUIREMENTS OF FEDERAL SPECIFICATION RR-F-620B. MATING SURFACES SHALL BE FINISHED TO ASSURE NON-ROCKING FIT WITH ANY COVER POSITION. 7. ALL BASE REINFORCING STEEL SHALL HAVE A MIN. YIELD STRENGTH OF 60,000 PSI AND BE PLACED IN THE UPPER HALF OF THE BASE WITH 1 IN. MIN. CLEARANCE. 8. MIN. SOLE BEARING VALUE SHALL EQUAL 3,000 POUNDS PER SQUARE FOOT. 9. FOR DETAILS SHOWING LADDER, STEPS, HANDHOLES AND TOP SLABS. SEE FIG. 7-006. 10. SEE THE WSDOT/APWA STANDARD SPECIFICATIONS SEC. 7-05.3 FOR JOINT REQUIREMENTS.

CATCH BASIN TYPE 2 48", 54", 60", 72", AND 96" FIG. 7-005 7-10



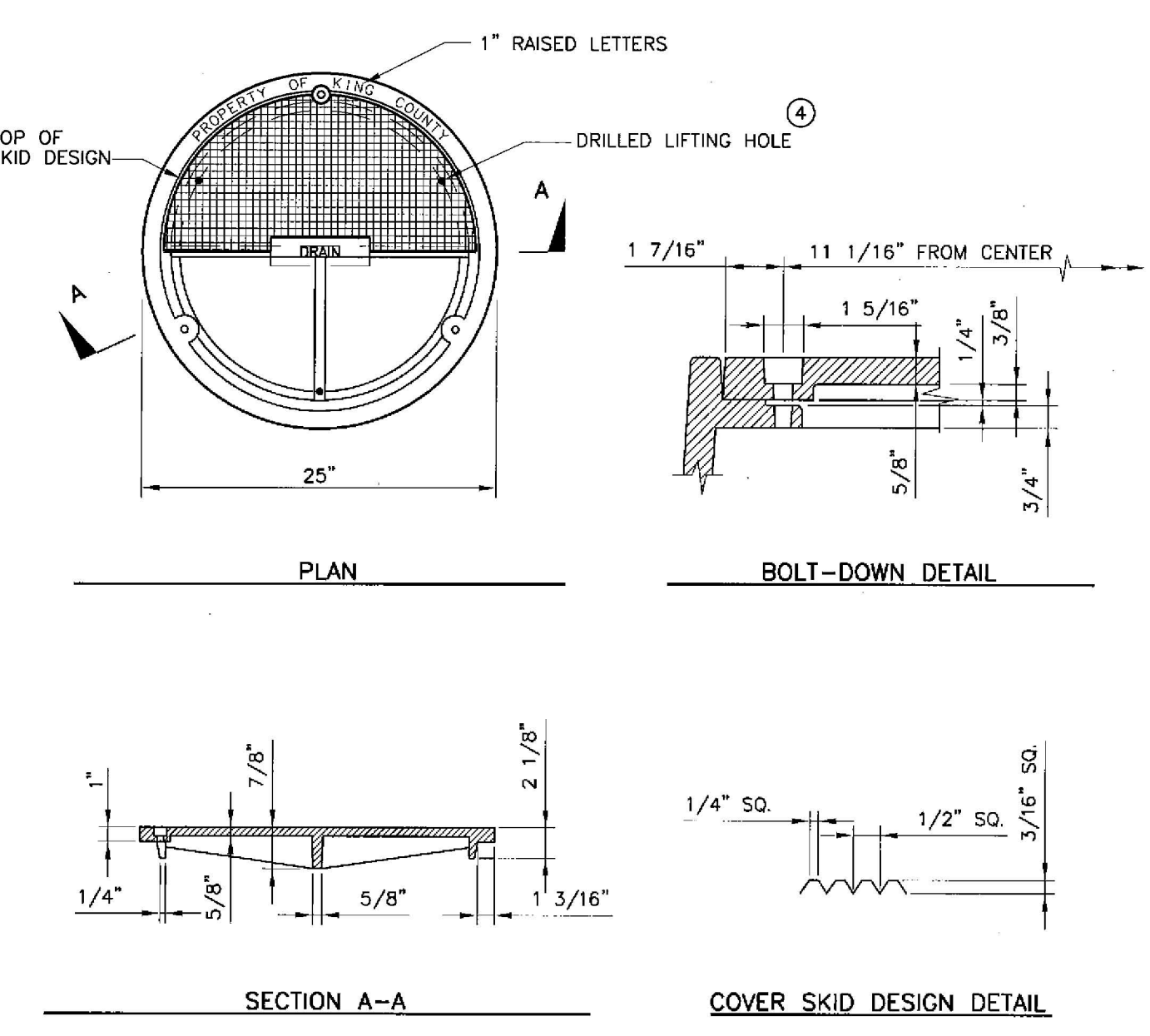
- NOTES: 1. PROPRIETARY CATCH BASIN HANDHOLES AND STEPS ARE ACCEPTABLE, PROVIDED THAT THEY CONFORM TO SEC. 7.05, ASTM C478, ASTM M-199 AND MEET ALL WSDOT REQUIREMENTS. 2. CATCH BASIN STEP/HANDHOLD LOGS SHALL BE PARALLEL OR APPROXIMATELY RADIAL AT THE OPTION OF THE MANUFACTURER, EXCEPT THAT ALL STEPS IN ANY CATCH BASIN SHALL BE SIMILAR. PENETRATION OF OUTER WALL BY A LEG IS PROHIBITED. 3. HANDHOLES AND STEPS SHALL HAVE "DROP" RUNGS AS SHOWN ON DETAIL OR PROTRUDANCES TO PREVENT SIDEWAYS SLIP. 4. SLAB OPENING MAY BE 24" X 20" OR 24" DIAM. 5. AS AN ACCEPTABLE ALTERNATIVE TO REBAR, WELDED WIRE FABRIC HAVING A MIN. AREA OF 0.12 SQ. IN. PER FT. MAY BE USED. WELDED WIRE FABRIC SHALL COMPLY TO ASTM A497. 6. LADDERS OR STEPS SHALL EXTEND TO WITHIN 16 IN. OF BOTTOM OF CATCH BASIN. 7. HANGING LADDERS SHALL BE PERMANENTLY FASTENED AT TOP BY HANGING ON STEP OR BY BOLTING OR EMBEDDING IN CONCRETE. EACH SHALL BE EMBEDDED AT BOTTOM IN BASE. 8. ADDITIONAL SAFETY FEATURES MAY BE REQUIRED IN VERY DEEP OR UNUSUAL STRUCTURES.

CATCH BASIN DETAILS FIG. 7-006 7-11



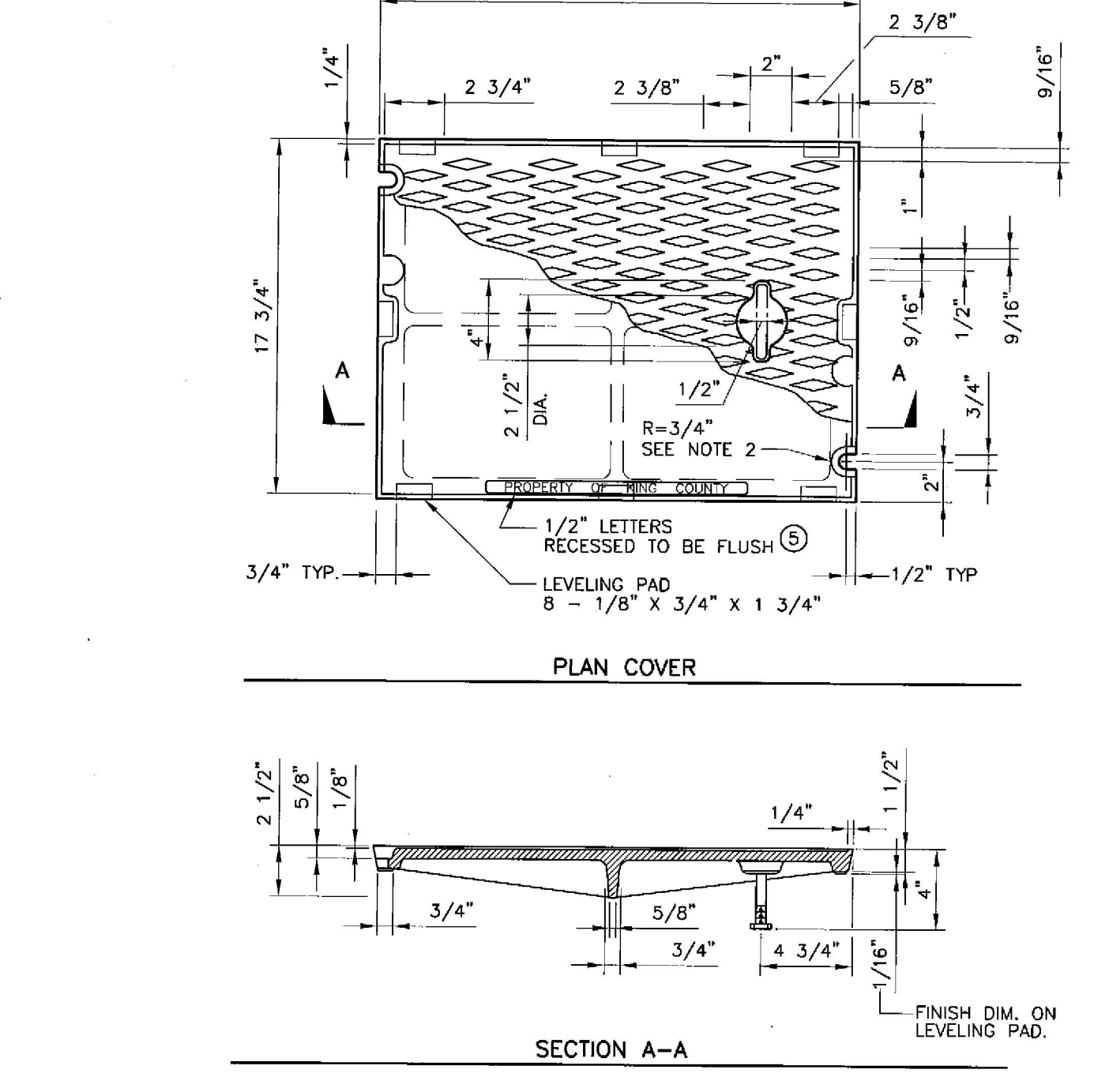
- NOTES: 1. SELF-LOCK VANED GRATE MANUFACTURER SUBJECT TO APPROVAL BY ENGINEER. 2. USE WITH TWO LOCKING BOLTS 5/8 IN.-11 NC STAINLESS TYPE 304 STEEL SOCKET HEAD (ALLEN HEAD) CAP SCREWS 2 IN. LONG. NOTE SLOT DETAIL. 3. MATERIAL IS DUCTILE IRON ASTM A536 GRADE 80-55-06. 4. "OUTFALL TO STREAM DUMP NO POLLUTANTS" MAY BE LOCATED ON BORDER AREA. 5. SEE SEC. 7.05. 6. THE WORDS "PROPERTY OF KING COUNTY" SHALL BE OMITTED IF GRATE IS ON PRIVATE SYSTEM.

VANED GRATE FIG. 7-018 7-23



- NOTES: 1. USE WITH THREE LOCKING BOLTS 5/8 IN.-11 NC STAINLESS TYPE 304 STEEL SOCKET HEAD (ALLEN HEAD) CAP SCREWS 2 IN. LONG. DRILL HOLES SPACED 120" AT 11 1/16 IN. RADIUS. 2. MATERIAL IS DUCTILE IRON ASTM A536 GRADE 80-55-06. 3. SEE SEC. 7.05. 4. DRILL THREE 1 IN. HOLES SPACED AT 120" AND 9 1/2 IN. RADIUS.

LOCKING MANHOLE COVER FIG. 7-022 7-27



- NOTES: 1. USE WITH FRAME (FIG. 7-014) DRILLED AND TAPPED FOR LOCKING BOLTS. 2. USE WITH TWO LOCKING BOLTS 5/8 IN.-11 NC STAINLESS STEEL TYPE 304 STEEL SOCKET HEAD (ALLEN HEAD) CAP SCREWS, MIN. 2 IN. LONG. 3. MATERIAL IS CAST IRON PER ASTM A48 CLASS 30. 4. SEE SEC. 7.05. 5. THE WORDS "PROPERTY OF KING COUNTY" SHALL BE OMITTED IF COVER IS ON A PRIVATE SYSTEM.

SOLID COVER FIG. 7-015 7-20

DRAINAGE NOTES:

- 1. PROOF OF LIABILITY INSURANCE SHALL BE SUBMITTED TO DDES PRIOR TO THE CONSTRUCTION OF THE DRAINAGE FACILITIES, PREFERABLY AT THE PRECONSTRUCTION MEETING. 2. ALL PIPE AND APPURTENANCES SHALL BE LAID ON A PROPERLY PREPARED FOUNDATION IN ACCORDANCE WITH WSDOT SPECIFICATIONS. THIS SHALL INCLUDE LEVELING AND COMPACTING THE TRENCH BOTTOM, THE TOP OF THE FOUNDATION MATERIAL, AND ANY REQUIRED PIPE BEDDING, TO A UNIFORM GRADE SO THAT THE ENTIRE PIPE IS SUPPORTED BY A UNIFORMLY DENSE UNYIELDING BASE. 3. STEEL PIPE SHALL BE ALUMINIZED, OR GALVANIZED WITH ASPHALT TREATMENT #1 OR BETTER INSIDE AND OUTSIDE. 4. ALL DRAINAGE STRUCTURES, SUCH AS CATCH BASINS AND MANHOLES, NOT LOCATED WITHIN A TRAVELED ROADWAY OR SIDEWALK, SHALL HAVE SOLID LOCKING LIDS. ALL DRAINAGE STRUCTURES ASSOCIATED WITH A PERMANENT RETENTION/DETENTION FACILITY SHALL HAVE SOLID LOCKING LIDS. 5. ALL CATCH BASIN GRATES SHALL CONFORM TO KCORS, WHICH INCLUDES THE STAMPING "OUTFALL TO STREAM, DUMP NO POLLUTANTS" AND "PROPERTY OF KING COUNTY", EXCEPT THAT PRIVATE DRAINAGE SYSTEMS SHALL NOT HAVE THE WORDS "PROPERTY OF KING COUNTY". 6. ALL DRIVEWAY CULVERTS LOCATED WITHIN KING COUNTY RIGHT-OF-WAY SHALL BE OF SUFFICIENT LENGTH TO PROVIDE A MINIMUM 3:1 SLOPE FROM THE EDGE OF THE DRIVEWAY TO THE BOTTOM OF THE DITCH. CULVERTS SHALL HAVE BEVELED END SECTIONS TO MATCH THE SIDE SLOPE KCORS. 7. ROCK FOR EROSION PROTECTION OF ROADWAY DITCHES, WHERE REQUIRED, MUST BE OF SOUND QUARRY ROCK, PLACED TO A DEPTH OF 1 FOOT, AND MUST MEET THE FOLLOWING SPECIFICATIONS: 4"-8"/40%-70% PASSING; 2"-4" ROCK/30%-40% PASSING; AND -2" ROCK/10%-20% PASSING. INSTALLATION SHALL BE IN ACCORDANCE WITH KCORS. 8. DRAINAGE OUTLETS (STUB-OUTS) SHALL BE PROVIDED FOR EACH INDIVIDUAL LOT, EXCEPT FOR THOSE LOTS APPROVED FOR INFILTRATION BY KING COUNTY. STUB-OUTS SHALL CONFORM TO THE FOLLOWING: 8.A. EACH OUTLET SHALL BE SUITABLY LOCATED AT THE LOWEST ELEVATION ON THE LOT, SO AS TO SERVICE ALL FUTURE ROCK PROTECTIONS AND FOOTING DRAINS, DRIVEWAYS, YARD DRAINS, AND ANY OTHER SURFACE OR SUBSURFACE DRAINS NECESSARY TO RENDER THE LOTS SUITABLE FOR THEIR INTENDED USE. EACH OUTLET SHALL HAVE FREE-FLOWING, POSITIVE DRAINAGE TO AN APPROVED STORMWATER CONVEYANCE SYSTEM OR TO AN APPROVED OUTFALL LOCATION. 8.B. OUTLETS ON EACH LOT SHALL BE LOCATED WITH A FIVE-FOOT-HIGH, 2" X 4" STAKE MARKED "STORM" OR "DRAIN". THE STUB-OUT SHALL EXTEND ABOVE SURFACE LEVEL, BE VISIBLE, AND BE SECURED TO THE STAKE. 8.C. PIPE MATERIAL SHALL CONFORM TO UNDERDRAIN SPECIFICATIONS DESCRIBED IN KCORS AND, IF NON-METALLIC, THE PIPE SHALL CONTAIN WIRE OR OTHER ACCEPTABLE DETECTION. 8.D. DRAINAGE EASEMENTS ARE REQUIRED FOR DRAINAGE SYSTEMS DESIGNED TO CONVEY FLOWS THROUGH INDIVIDUAL LOTS. 8.E. THE APPLICANT/CONTRACTOR IS RESPONSIBLE FOR COORDINATING THE LOCATIONS OF ALL STUB-OUT CONVEYANCE LINES WITH RESPECT TO THE UTILITIES (E.G. POWER, GAS, TELEPHONE, TELEVISION). 8.F. ALL INDIVIDUAL STUB-OUTS SHALL BE PRIVATELY OWNED AND MAINTAINED BY THE LOT HOME OWNER. 9. ALL DISTURBED PERVIOUS AREAS (COMPACTED, GRADED, LANDSCAPED, ETC.) OF THE DEVELOPMENT SITE MUST DEMONSTRATE ONE OF THE FOLLOWING: THE EXISTING DUFF LAYER SHALL BE STAGED AND REDISTRIBUTED TO MAINTAIN THE MOISTURE CAPACITY OF THE SOIL; OR AMENDED SOIL SHALL BE ADDED TO MAINTAIN THE MOISTURE CAPACITY. 10. SEASONAL CLEARING IS LIMITED BETWEEN OCTOBER 1 AND MARCH 30 INCLUSIVE, UNLESS OTHERWISE APPROVED WITH A WRITTEN DECISION BY THE REVIEWING AGENCY. 11. IMPROVEMENTS AND/OR BUILDINGS SHALL NOT BE INSTALLED UNTIL DRAINAGE FACILITIES ARE "IN OPERATION", (KCC 9.04).



Pacific Engineering Design, LLC Civil Engineering & Planning Consultants

Phone: (206) 431-7970 Fax: (206) 388-1648 15445 53RD Ave. S. Seattle, WA 98188 www.paceng.com

KING COUNTY Taylor Creek Apartments RYAN GROUWS G3 INVESTMENTS, LLC P.O. BOX 78448 SEATTLE, WA 98178 Phone: (425) 255-5747 Fax: (425) 255-4882

PROJECT NO.: 10018 DRAWN BY: ENM ISSUE DATE: 12-01-2010 SHEET REV.: 2012-12-14

NOTES AND DETAILS

10018FRD01.DWG RW2 SHEET 2 OF 3



Department of Transportation Road Services Division 2007 Design and Construction Standards



Department of Transportation Road Services Division 2007 Design and Construction Standards



Department of Transportation Road Services Division 2007 Design and Construction Standards

Table for KING COUNTY DPER APPROVAL with columns for Review Engineer, Senior Engineer, and Date.