

THE SW CORNER OF THE SW 1/4, NW 1/4, SEC. 12, TWP. 23 N., RGE. 04 E., W.M.

TEMPORARY EROSION AND SEDIMENT CONTROL STANDARD NOTES:

- APPROVAL OF THIS EROSION AND SEDIMENTATION CONTROL (ESC) PLAN DOES NOT CONSTITUTE AN APPROVAL OF PERMANENT ROAD OR DRAINAGE DESIGN (E.G. SIZE AND LOCATION OF ROADS, PIPES, RESTRICTORS, CHANNELS, RETENTION FACILITIES, UTILITIES, ETC.)
- THE IMPLEMENTATION OF THESE ESC PLANS AND THE CONSTRUCTION, MAINTENANCE, REPLACEMENT, AND UPGRADING OF THESE ESC FACILITIES IS THE RESPONSIBILITY OF THE APPLICANT/ESC SUPERVISOR UNTIL ALL CONSTRUCTION IS APPROVED.
- THE BOUNDARIES OF THE CLEARING LIMITS SHOWN ON THIS PLAN SHALL BE CLEARLY FLAGGED BY SURVEY TAPE OR FENCING, IF REQUIRED, PRIOR TO CONSTRUCTION (SWDM APPENDIX D). DURING THE CONSTRUCTION PERIOD, NO DISTURBANCE BEYOND THE CLEARING LIMITS SHALL BE PERMITTED. THE CLEARING LIMITS SHALL BE MAINTAINED BY THE APPLICANT/ESC SUPERVISOR FOR THE DURATION OF CONSTRUCTION.
- STABILIZED CONSTRUCTION ENTRANCES SHALL BE INSTALLED AT THE BEGINNING OF CONSTRUCTION AND MAINTAINED FOR THE DURATION OF THE PROJECT. ADDITIONAL MEASURES, SUCH AS CONSTRUCTED WHEEL WASH SYSTEMS OR WASH PADS, MAY BE REQUIRED TO ENSURE THAT ALL PAVED AREAS ARE KEPT CLEAN AND TRACK OUT TO ROAD RIGHT OF WAY DOES NOT OCCUR FOR THE DURATION OF THE PROJECT.
- THE ESC FACILITIES SHOWN ON THIS PLAN MUST BE CONSTRUCTED PRIOR TO OR IN CONJUNCTION WITH ALL CLEARING AND GRADING SO AS TO ENSURE THAT THE TRANSPORT OF SEDIMENT TO SURFACE WATERS, DRAINAGE SYSTEMS, AND ADJACENT PROPERTIES IS MINIMIZED.
- THE ESC FACILITIES SHOWN ON THIS PLAN ARE THE MINIMUM REQUIREMENTS FOR ANTICIPATED SITE CONDITIONS DURING THE CONSTRUCTION PERIOD. THESE ESC FACILITIES SHALL BE UPGRADED AS NEEDED FOR UNEXPECTED STORM EVENTS AND MODIFIED TO ACCOUNT FOR CHANGING SITE CONDITIONS (E.G. ADDITIONAL COVER MEASURES, ADDITIONAL SUMP PUMPS, RELOCATION OF DITCHES AND SILT FENCES, PERIMETER PROTECTION ETC.).
- THE ESC FACILITIES SHALL BE INSPECTED DAILY BY THE APPLICANT/ESC SUPERVISOR AND MAINTAINED TO ENSURE CONTINUED PROPER FUNCTIONING. WRITTEN RECORDS SHALL BE KEPT OF WEEKLY REVIEWS OF THE ESC FACILITIES.
- ANY AREAS OF EXPOSED SOILS, INCLUDING ROADWAY EMBANKMENTS, THAT WILL NOT BE DISTURBED FOR TWO DAYS DURING THE WET SEASON OR SEVEN DAYS DURING THE DRY SEASON SHALL BE IMMEDIATELY STABILIZED WITH THE APPROVED ESC COVER METHODS (E.G., SEEDING, MULCHING, PLASTIC COVERING, ETC.).
- ANY AREA NEEDING ESC MEASURES, NOT REQUIRING IMMEDIATE ATTENTION, SHALL BE ADDRESSED WITHIN SEVEN (7) DAYS.
- THE ESC FACILITIES ON INACTIVE SITES SHALL BE INSPECTED AND MAINTAINED A MINIMUM OF ONCE A MONTH OR WITHIN 24 HOURS FOLLOWING A STORM EVENT.
- AT NO TIME SHALL MORE THAN ONE (1) FOOT OF SEDIMENT BE ALLOWED TO ACCUMULATE WITHIN A CATCH BASIN. ALL CATCH BASINS AND CONVEYANCE LINES SHALL BE CLEANED PRIOR TO PAVING. THE CLEANING OPERATION SHALL NOT FLUSH SEDIMENT-LADEN WATER INTO THE DOWNSTREAM SYSTEM.
- ANY PERMANENT RETENTION/DETENTION FACILITY USED AS A TEMPORARY SETTLING BASIN SHALL BE MODIFIED WITH THE NECESSARY EROSION CONTROL MEASURES AND SHALL PROVIDE ADEQUATE STORAGE CAPACITY. IF THE PERMANENT FACILITY IS TO FUNCTION ULTIMATELY AS AN INFILTRATION SYSTEM, THE TEMPORARY FACILITY MUST BE ROUGH GRADED SO THAT THE BOTTOM AND SIDES ARE AT LEAST THREE FEET ABOVE THE FINAL GRADE OF THE PERMANENT FACILITY.
- COVER MEASURES WILL BE APPLIED IN CONFORMANCE WITH APPENDIX D OF THE SURFACE WATER DESIGN MANUAL.
- PRIOR TO THE BEGINNING OF THE WET SEASON (OCT. 1), ALL DISTURBED AREAS SHALL BE REVIEWED TO IDENTIFY WHICH ONES CAN BE SEEDED IN PREPARATION FOR THE WINTER RAINS. DISTURBED AREAS SHALL BE SEEDED WITHIN ONE WEEK OF THE BEGINNING OF THE WET SEASON. A SKETCH MAP OF THOSE AREAS TO BE SEEDED AND THOSE AREAS TO REMAIN UNCOVERED SHALL BE SUBMITTED TO THE DDES INSPECTOR FOR REVIEW.

WET SEASON SPECIAL PROVISIONS (OCTOBER 1ST THROUGH APRIL 30TH)

ALL OF THE FOLLOWING PROVISIONS FOR WET SEASON CONSTRUCTION ARE DETAILED IN THE REFERENCED SECTIONS. THESE REQUIREMENTS ARE LISTED HERE FOR THE CONVENIENCE OF THE DESIGNER AND THE REVIEWER.

- THE ALLOWED TIME THAT A DISTURBED AREA MAY REMAIN UNWORKED WITHOUT COVER MEASURES IS REDUCED TO TWO CONSECUTIVE WORKING DAYS, RATHER THAN SEVEN (SECTION D.3.2).
- STOCKPILES AND STEEP CUT AND FILL SLOPES ARE TO BE PROTECTED IF UNWORKED FOR MORE THAN 12 HOURS (SECTION D.3.2).
- COVER MATERIALS SUFFICIENT TO COVER ALL DISTURBED AREAS SHALL BE STOCKPILED ON SITE (SECTION D.3.2).
- ALL AREAS THAT ARE TO BE UNWORKED DURING THE WET SEASON SHALL BE SEEDED WITHIN ONE WEEK OF THE BEGINNING OF THE WET SEASON (SECTION D.3.2.5).
- MULCH IS REQUIRED TO PROTECT ALL SEEDED AREAS (SECTION D.3.2.1).
- FIFTY LINEAR FEET OF SILT FENCE (AND THE NECESSARY STAKES) PER ACRE OF DISTURBANCE MUST BE STOCKPILED ON SITE (SECTION D.3.3.1).
- CONSTRUCTION ROAD AND PARKING LOT STABILIZATION ARE REQUIRED FOR ALL SITES UNLESS THE SITE IS UNDERLAIN BY COARSE-GRAINED SOIL (SECTION D.3.4.2).
- SEDIMENT RETENTION IS REQUIRED UNLESS NO OFFSITE DISCHARGE IS ANTICIPATED FOR THE SPECIFIED DESIGN FLOW (SECTION D.3.5).
- SURFACE WATER CONTROLS ARE REQUIRED UNLESS NO OFFSITE DISCHARGE IS ANTICIPATED FOR THE SPECIFIED DESIGN FLOW (SECTION D.3.6).
- PHASING AND MORE CONSERVATIVE BMPs MUST BE EVALUATED FOR CONSTRUCTION ACTIVITY NEAR SURFACE WATERS (SECTION D.5.3).
- ANY RUNOFF GENERATED BY DEWATERING MAY BE REQUIRED TO DISCHARGE TO THE SANITARY SEWER (WITH APPROPRIATE DISCHARGE AUTHORIZATION), PORTABLE SAND FILTER SYSTEMS, OR HOLDING TANKS.
- THE FREQUENCY OF MAINTENANCE REVIEW INCREASES FROM MONTHLY TO WEEKLY (SECTION D.5.4).

ADDITIONAL TESC NOTES:

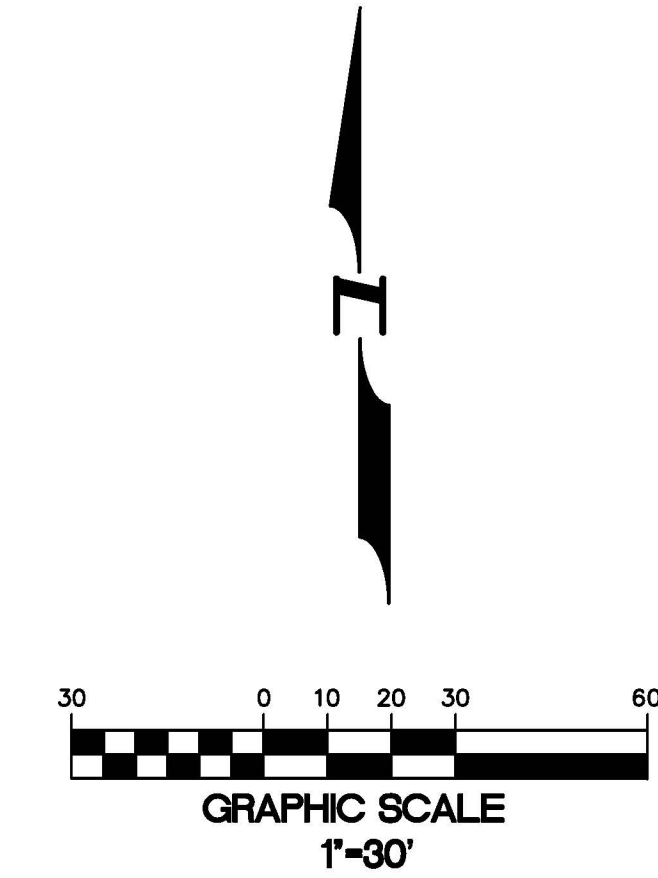
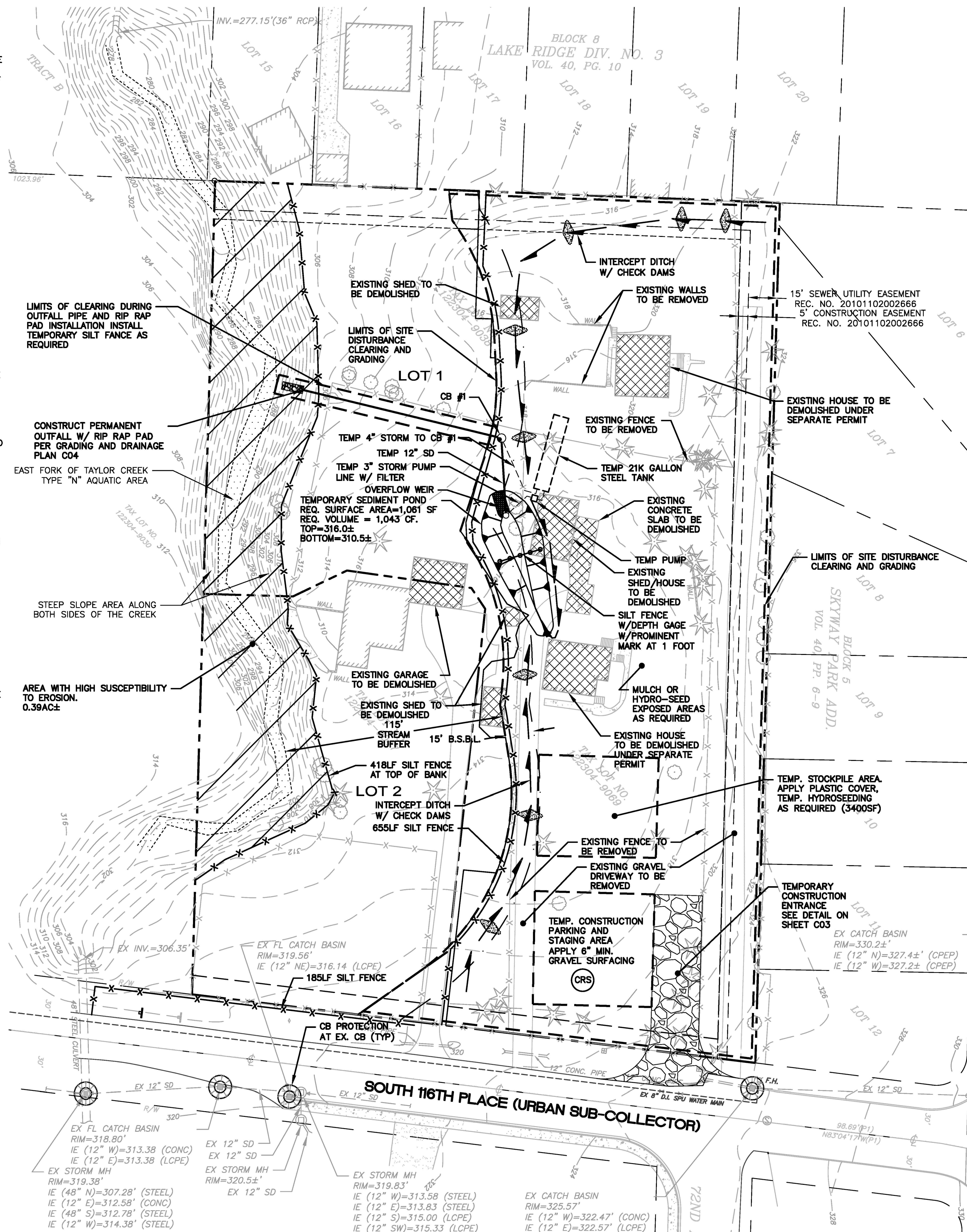
- FROM OCTOBER 1ST THROUGH APRIL 30TH, NO SOILS SHALL BE EXPOSED FOR MORE THAN TWO CONSECUTIVE WORKING DAYS. ALSO THIS TWO-DAY REQUIREMENT MAY BE APPLIED AT OTHER TIMES OF THE YEAR IF STORM EVENTS WARRANT MORE CONSERVATIVE MEASURES.
- EXPOSED SOILS SHALL BE STABILIZED AT THE END OF THE WORKDAY PRIOR TO A WEEKEND, HOLIDAY, OR PREDICTED RAIN EVENT.
- MULCH SHALL MEET WITH THE MULCH STANDARDS AND GUIDELINES IN D.3.2.2 OF SWDM.
- HYDROSEEDING SHALL MEET WITH THE STANDARDS AND GUIDELINES IN D.3.2.6 OF SWDM.
- WATER WILL BE USED FOR DUST CONTROL PER D.3.8 OF SWDM.
- SILT FENCE SHALL BE STANDARD STRENGTH WIRE BACKED SILT FENCE OR APPROVED EQUAL.

CONSTRUCTION SEQUENCE:

- PRE-CONSTRUCTION MEETING.
- POST SIGN WITH NAME AND PHONE NUMBER OF ESC SUPERVISOR (MAY BE CONSOLIDATED WITH THE REQUIRED NOTICE OF CONSTRUCTION SIGN).
- FLAG OR FENCE CLEARING LIMITS.
- INSTALL CATCH BASIN PROTECTION IF REQUIRED.
- GRADE AND INSTALL CONSTRUCTION ENTRANCE(S).
- INSTALL PERIMETER PROTECTION (SILT FENCE, BRUSH BARRIER, ETC.).
- CONSTRUCT CB#1 AND ITS OUTFALL PIPE AND RIP RAP PAD.
- CONSTRUCT SEDIMENT PONDS AND TRAPS.
- CONSTRUCT SURFACE WATER CONTROLS (INTERCEPT DIKES, PIPE SLOPE DRAINS, ETC.) SIMULTANEOUSLY WITH CLEARING AND GRADING FOR PROJECT DEVELOPMENT.
- GRADE AND STABILIZE CONSTRUCTION ROADS.
- MAINTAIN EROSION CONTROL MEASURES IN ACCORDANCE WITH KING COUNTY STANDARDS AND MANUFACTURER'S RECOMMENDATIONS.
- RELOCATE EROSION CONTROL MEASURES OR INSTALL NEW MEASURES SO THAT AS SITE CONDITIONS CHANGE THE EROSION AND SEDIMENT CONTROL IS ALWAYS IN ACCORDANCE WITH THE KING COUNTY EROSION AND SEDIMENT CONTROL STANDARDS.
- COVER ALL AREAS THAT WILL BE UNWORKED FOR MORE THAN SEVEN DAYS DURING THE DRY SEASON OR TWO DAYS DURING THE WET SEASON WITH STRAW, WOOD FIBER MULCH, COMPOST, PLASTIC SHEETING OR EQUIVALENT.
- STABILIZE ALL AREAS THAT REACH FINAL GRADE WITHIN SEVEN DAYS.
- SEED OR SOD ANY AREAS TO REMAIN UNWORKED FOR MORE THAN 30 DAYS.
- UPON COMPLETION OF THE PROJECT, ALL DISTURBED AREAS MUST BE STABILIZED AND BMPs REMOVED IF APPROPRIATE.

DEWATERING DISCHARGE REQUIREMENT:

STATE WATER QUALITY STANDARDS REQUIRE DISCHARGED WATER TO NOT EXCEED 5 NTU ABOVE THE RECEIVING WATER AND THE PH TO BE WITHIN 0.3 PH UNITS OF THE RECEIVING WATER. OTHERWISE, THE TEMPORARY OUTLET OF THE TEMPORARY SEDIMENT POND WILL BE PLUGGED FROM THE INSIDE OF CB #1 WITH A TEMPORARY STORM PIPE PLUG. WATER IN THE TEMPORARY SEDIMENT POND WILL BE PUMPED TO A TEMPORARY HOLDING TANK FOR FURTHER TREATMENT UNTIL IT MEETS THE DISCHARGE STANDARD AND THEN BE DISCHARGED TO CB #1. ADDITIONAL HOLDING TANK MAY BE USED DEPENDING ON WEATHER CONDITIONS.



VERTICAL DATUM:

THE ELEVATIONS AND CONTOURS SHOWN HEREON ARE BASED CITY OF SEATTLE BENCHMARK NO. 93V-831, ELEVATION BEING: 362.980 FEET, NAVD88.

SET AN ONSITE TEMPORARY BENCHMARK: NAIL IN UTILITY POLE NEAR SE COR. OF PROP. ELEVATION = 325.36 FEET.

CONTOUR INTERVAL: 2 FEET.

BASIS OF BEARINGS:

THE BASIS OF BEARINGS FOR THIS MAP IS BETWEEN THE TWO FOUND MONUMENTS ON THE CENTERLINE OF S. 115TH STREET, BEARING N87°46'02\"/>

TEMPORARY EROSION CONTROL SEED MIX			
	%WEIGHT	%PURITY	%GERMINATION
CHEWINGS OR RED FESCUE FESTUCA RUBRA VAR. COMMUTATA OR FESTUCA RUBRA	40	98	90
ANNUAL OR PERENNIAL RYE LOLIUM MULTIFLORUM OR LOLIUM PERENNIS	40	98	90
REDTOP OR COLONIAL BENTGRASS AGROSTIS ALBA OR AGROSTIS TENUIS	10	92	85
WHITE DUTCH CLOVER TRIFOLIUM REPENS	10	98	90

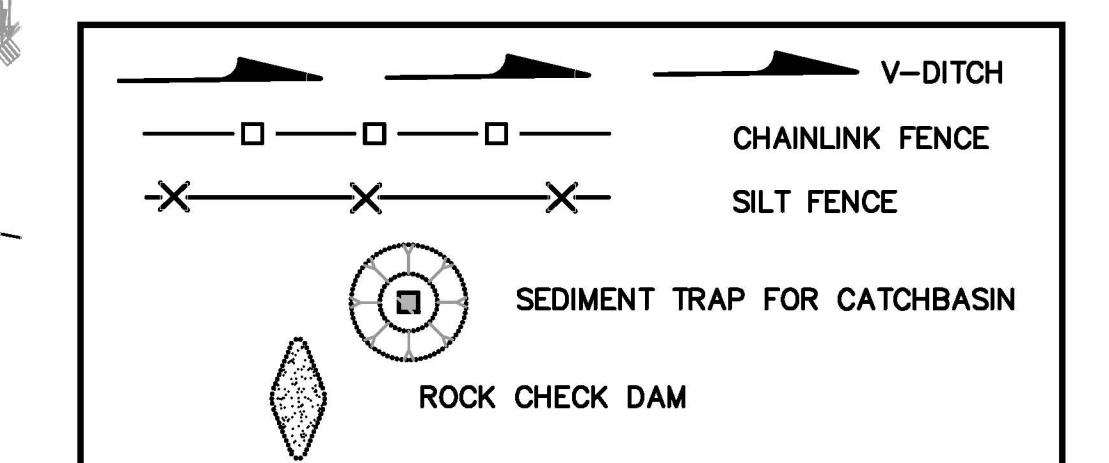
OWNER/DEVELOPER:

RYAN GROUWS
G3 INVESTMENTS, LLC
P.O. BOX 78448
SEATTLE, WA 98178
PH: (425) 255-5747

PROJECT EROSION LEAD/ESC SUPERVISOR

BILL GRANGER
RE-ALIGN ENVIRONMENTAL
14056 180TH AVE SE
RENTON, WA
PH: (206) 798-6132
CESCL NO 63301

LEGEND



Pacific Engineering Design, LLC
Civil Engineering & Planning Consultants

Phone: (206) 431-7970 Fax: (206) 388-1648
15445 53RD Ave. S. Seattle, WA 98188 www.paceeng.com

TAYLOR CREEK APARTMENTS
KING COUNTY

RYAN GROUWS
G3 INVESTMENTS, LLC
P.O. BOX 78448
SEATTLE, WA 98178
Phone: (425) 255-5747
Fax: (425) 255-4882

PROJECT NO.: 10018
DRAWN BY: ENM
ISSUE DATE: 2010-12-01
SHEET REV.: 2012-12-14

TEMPORARY EROSION CONTROL PLAN AND DEMOLITION PLAN

10018TE01.DWG
C02
SHEET 02 OF 11