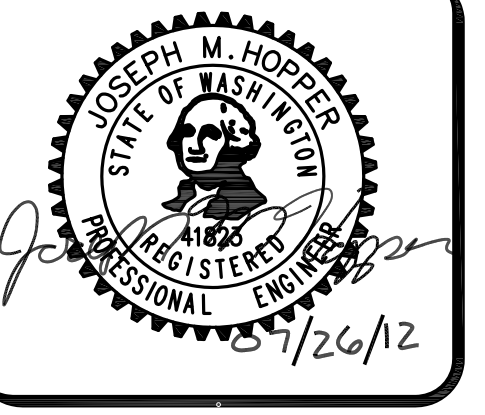


THE SW CORNER OF THE SW 1/4, NW 1/4, SEC. 12, TWP. 23 N., RGE. 04 E., W.M.

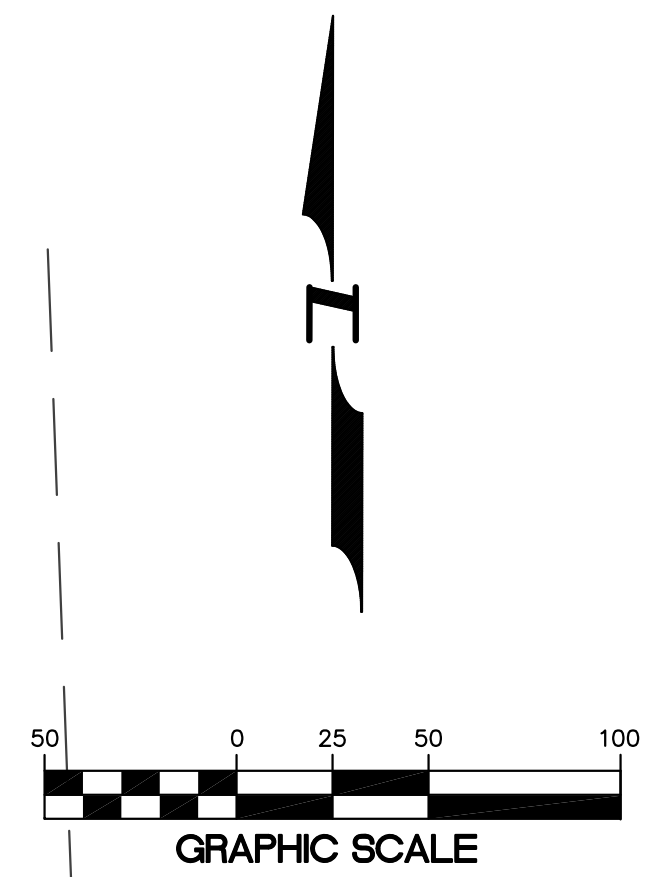
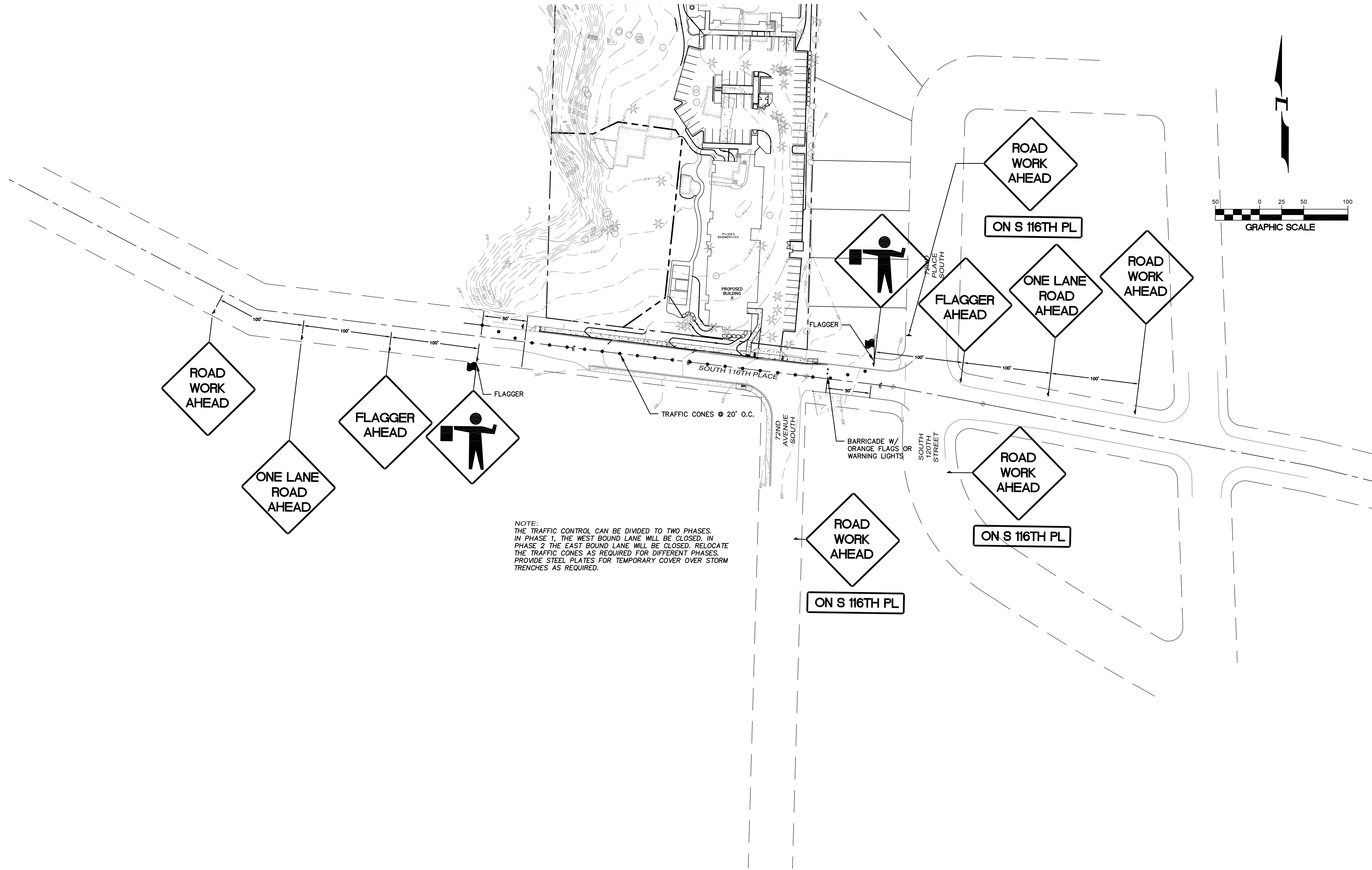


Taylor Creek Apartments
KING COUNTY
RYAN GROUWS
G3 INVESTMENTS, LLC
P.O. BOX 78448
SEATTLE, WA 98178
Phone: (425) 255-5747
Fax: (425) 255-4882

PROJECT NO.: 10018
DRAWN BY: ENM
ISSUE DATE: 11-30-2011
SHEET REV.: 07-26-2012

TRAFFIC CONTROL PLAN

10018TRAFF.DWG
TC1
SHEET 1 OF 1



NOTE:
THE TRAFFIC CONTROL CAN BE DIVIDED TO TWO PHASES.
IN PHASE 1, THE WEST BOUND LANE WILL BE CLOSED. IN
PHASE 2 THE EAST BOUND LANE WILL BE CLOSED. RELOCATE
THE TRAFFIC CONES AS REQUIRED FOR DIFFERENT PHASES.
PROVIDE STEEL PLATES FOR TEMPORARY COVER OVER STORM
TRENCHES AS REQUIRED.

APPROVED FOR CONSTRUCTION
DEPARTMENT OF DEVELOPMENT & ENVIRONMENTAL SERVICES
King County, Washington
Date _____ Development Engineer _____