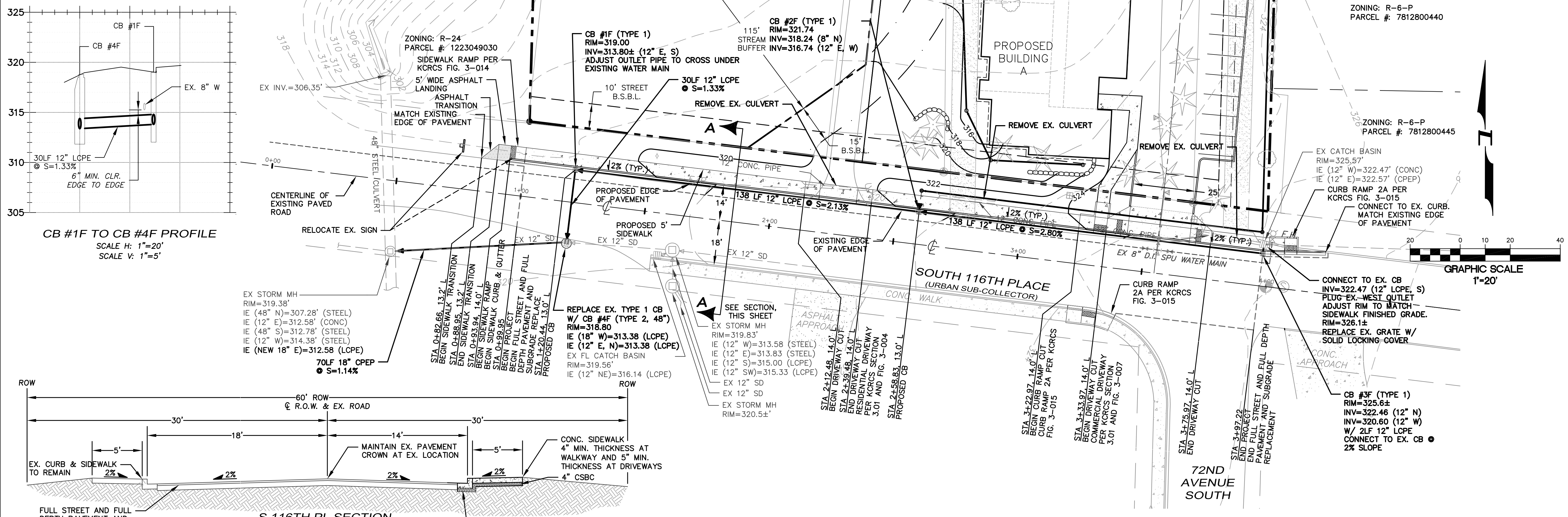
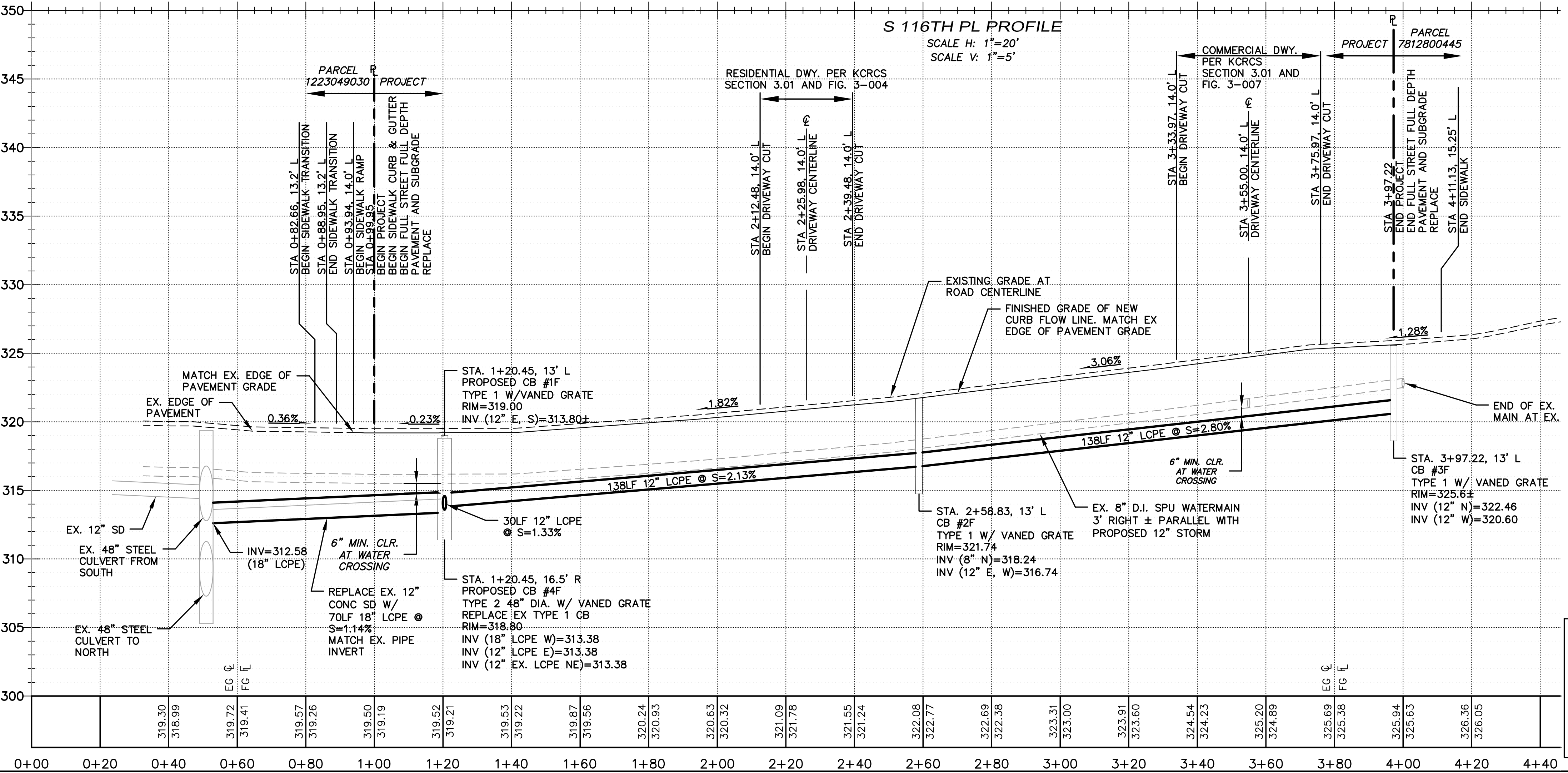
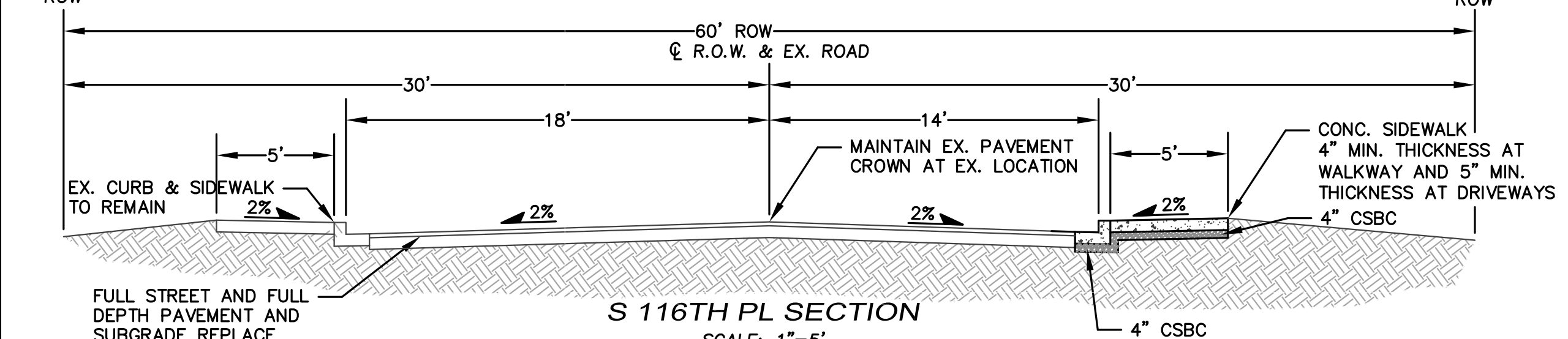


THE SW CORNER OF THE SW 1/4, NW 1/4, SEC. 12, TWP. 23 N., RGE. 04 E., W.M.



CB #1F TO CB #4F PROFILE
SCALE H: 1"=20'
SCALE V: 1"=5'



NOTE: ALL 12" AND 18" CPEP STORMS ARE N-12 PIPES WITH WATER TIGHT JOINTS OR EQUAL.

RESIDENTIAL AND COMMERCIAL DRIVEWAY DROPS PER KCRCs SECTION 3.01. RESIDENTIAL DRIVEWAY PER FIG. 3-004, COMMERCIAL DRIVEWAY PER FIG. 3-007.

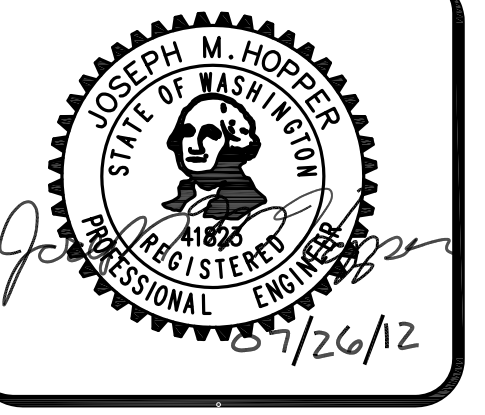
SHEET INDEX:
 RW1 - S. 116TH PL PLAN AND PROFILE
 RW2 - NOTES AND DETAILS
 RW3 - GENERAL NOTES AND DETAILS
 TC1 - TRAFFIC CONTROL PLAN

VERTICAL DATUM:
 THE ELEVATIONS AND CONTOURS SHOWN HEREON ARE BASED CITY OF SEATTLE BENCHMARK NO. 93V-831, ELEVATION BEING: 362.980 FEET, NAVD88.
 SET AN ONSITE TEMPORARY BENCHMARK: NAIL IN UTILITY POLE NEAR SE COR. OF PROP. ELEVATION = 325.36 FEET.
 CONTOUR INTERVAL: 2 FEET.

BASIS OF BEARINGS:
 THE BASIS OF BEARINGS FOR THIS MAP IS BETWEEN THE TWO FOUND MONUMENTS ON THE CENTERLINE OF S. 115TH STREET, BEARING N87°45'02"W, PER PLAT OF LAKE RIDGE DIV. NO. 3, 40-10, AS SHOWN.

APPROVED FOR CONSTRUCTION
 DEPARTMENT OF DEVELOPMENT & ENVIRONMENTAL SERVICES
 King County, Washington

Date _____ Development Engineer _____



Pacific Engineering Design, LLC
 Civil Engineering & Planning Consultants

Phone: (206) 431-7970 Fax: (206) 388-1648
 15445 53RD Ave. S. Seattle, WA 98188 www.paceng.com

Taylor Creek Apartments
 KING COUNTY

RYAN GROUWS
 G3 INVESTMENTS, LLC
 P.O. BOX 78448
 SEATTLE, WA 98178
 Phone: (425) 255-5747
 Fax: (425) 255-4882

PROJECT NO.: 10018
 DRAWN BY: ENM
 ISSUE DATE: 03-04-2011
 SHEET REV.: 07-26-2012

S. 116TH PL PLAN AND PROFILE

10018GR01.DWG
RW1
 SHEET 1 OF 3