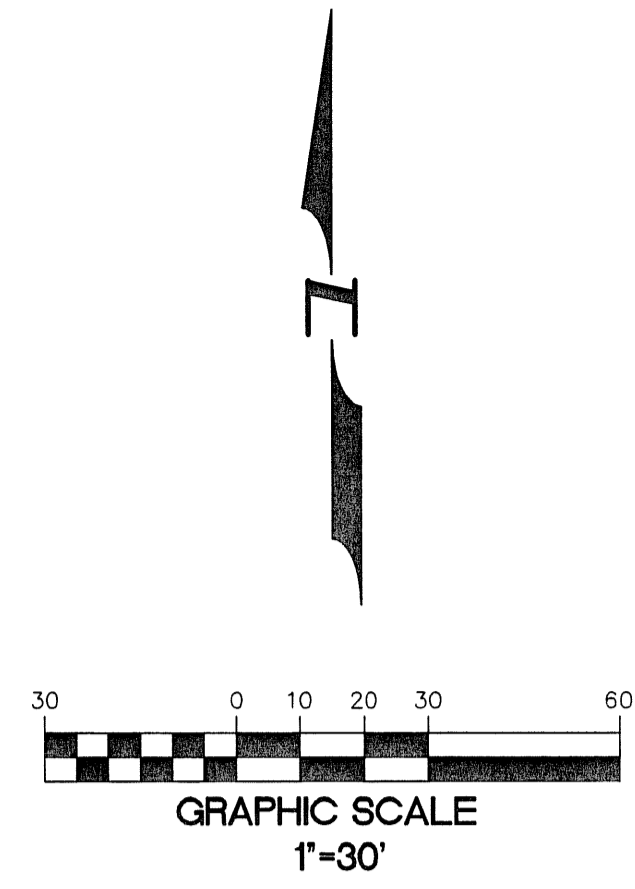
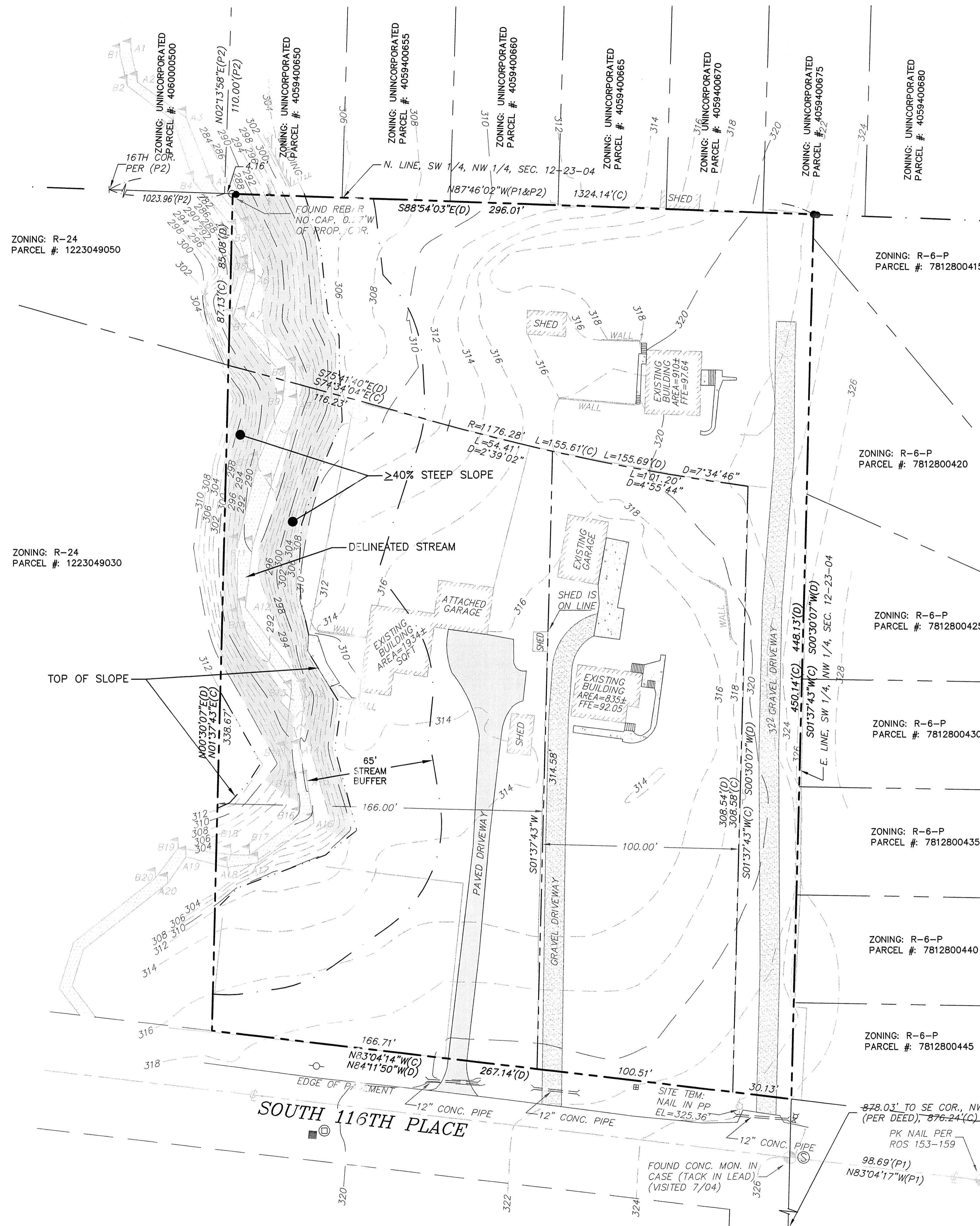


THE SW CORNER OF THE SW 1/4, NW 1/4, SEC. 12, TWP. 23 N., RGE. 04 E., W.M.



Pacific Engineering Design, LLC
Civil Engineering & Planning Consultants

Phone: (206) 431-7970 Fax: (206) 388-1648
15445 53RD Ave. S. Seattle, WA 98148 www.paceng.com

SKYWAY APARTMENTS
KING COUNTY

RYAN GROUWS
G3 INVESTMENTS, LLC
P.O. BOX 78448
SEATTLE, WA 98178
Phone: (XXX) XXX-XXXX
Fax: (XXX) XXX-XXXX

PROJECT NO.: 10018
DRAWN BY: ENM
ISSUE DATE: 2010-05-14
SHEET REV.:

GRADING AND DRAINAGE

10018EX01.DWG
EX01
SHEET OF

10018EX01.DWG 13:24:16 10018EX01.DWG