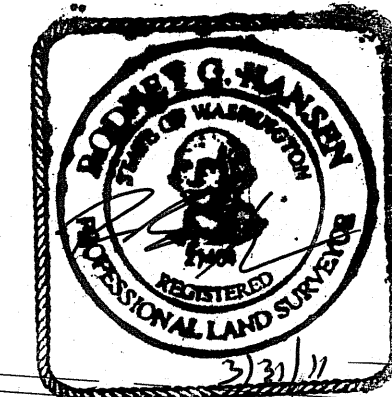


A PORTION OF THE SE 1/4, SEC. 23, TWP. 23 N., RGE. 5 E., W.M. AND A PORTION OF THE SE 1/4, SEC. 24, TWP. 23 N., RGE. 5 E., W.M.

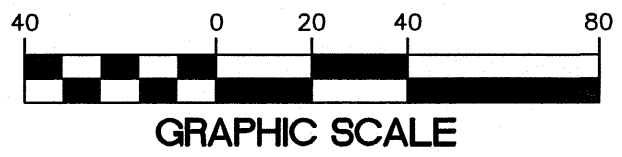
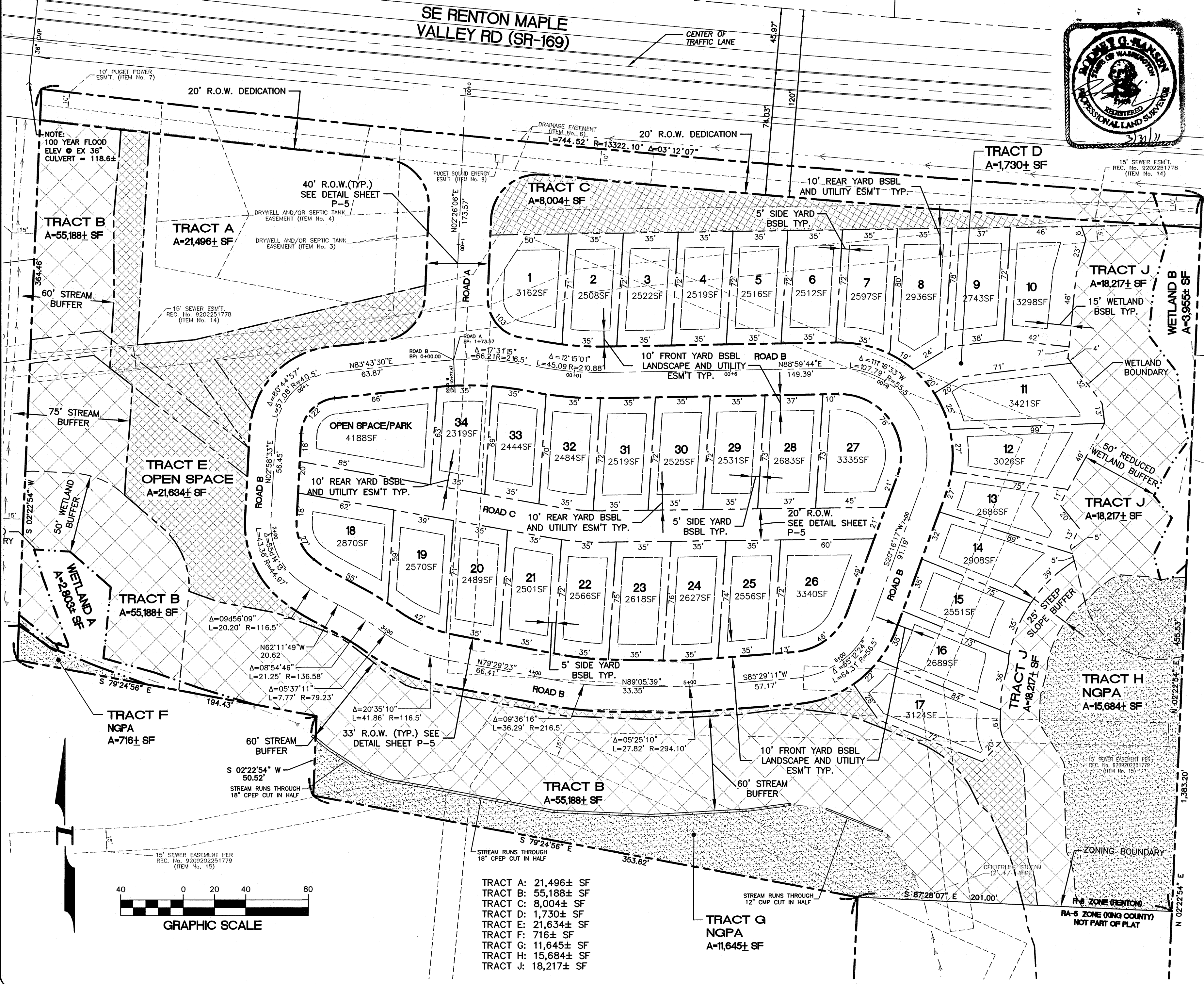
(CITY FILE # _____)



15445 53RD AVE. S.
SEATTLE, WA 98188
PHONE: (206) 431-7970
FAX: (206) 388-1648
WEB SITE: PACENG.COM

Pacific Engineering Design, LLC

Civil Engineering and
Planning Consultants



- TRACT A: 21,496± SF
- TRACT B: 55,188± SF
- TRACT C: 8,004± SF
- TRACT D: 1,730± SF
- TRACT E: 21,634± SF
- TRACT F: 716± SF
- TRACT G: 11,645± SF
- TRACT H: 15,684± SF
- TRACT J: 18,217± SF

MCCORMICK PLAT

CITY OF RENTON

FOR:
ROBERT MCCORMICK
161 MAPLEWAY ROAD
SELAH, WA 98642
PHONE: (509) 945-2219

PROJECT NO.: **07093**
DRAWN BY: **CJB**
ISSUE DATE: **12-13-2010**
SHEET REV.:

**PRELIMINARY
PLAT PLAN**

07093 Plat Plan.dwg
PLAT 2
SHEET 02 OF 02