

PORTION OF N.E. 1/4 S.W. 1/4 SEC. 34, T. 24N., R. 5 E., W.M.



15445 53RD AVE. S.  
SEATTLE, WA 98188  
PHONE: (206) 431-7970  
FAX: (206) 388-1648  
WEB SITE:  
PACENG.COM

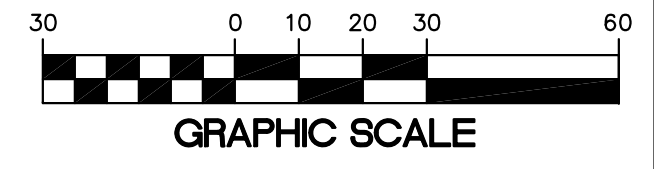
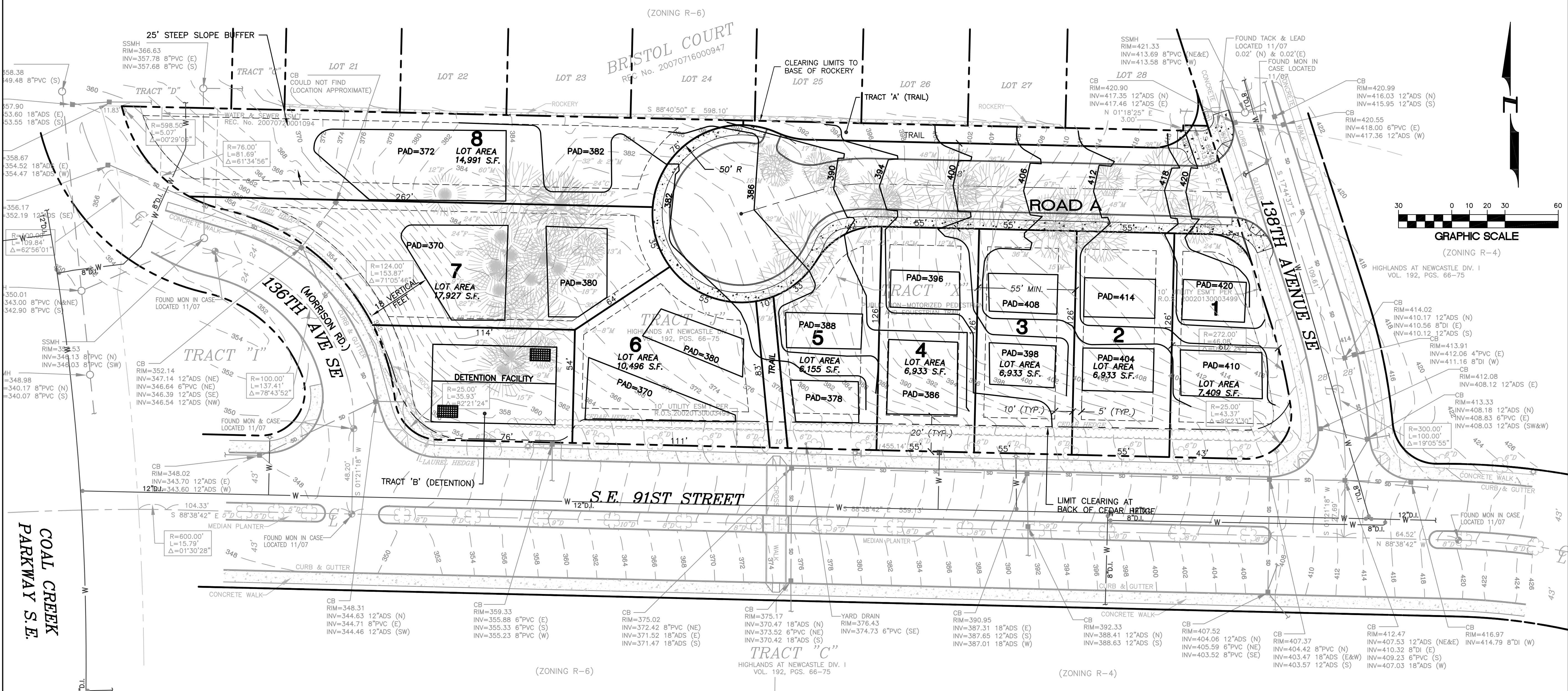
Pacific  
Engineering  
Design, LLC  
Civil Engineering and  
Planning Consultants

TRACT 'J'  
THE HIGHLANDS AT NEWCASTLE  
CITY OF NEWCASTLE  
FOR THE HIGHLANDS AT NEWCASTLE, LLC  
2801 NORTH WALKWAY, SUITE 100  
SEATTLE, WA 98147  
PHONE: (425) 789-3890  
FAX: (425) 827-0462

PROJECT NO.: 07052  
DRAWN BY: BCS  
ISSUE DATE: 01/18/08  
SHEET REV.:

SENSITIVE AREA  
SITE PLAN

07052S02.DWG  
S02



Sight Distance  
Stopping sight distance and intersection sight distance were measured at the Tract J site access street location at 138th Ave. SE. 138th Ave. SE is a recently constructed street and has excellent sight distance looking in both directions from the Tract J site access street location. Sight distance requirements are based on the American Association of Highway and Transportation Engineers (AASHTO) "Geometric Design of Highways and Streets" standards.  
Current AASHTO standards require an intersection sight distance of 335 ft. looking to the left from the side street and 390 ft. looking to the right from the side street for a design speed of 35 miles per hour (using an eye height of 3.5 ft. and a vehicle height of 4.25 ft.). The field measured intersection sight distance is met in both directions. Looking to the right there is a clear line of sight to the intersection of SE 91st Street.  
A stopping sight distance of 250 ft. is required for a 35 mph design speed. The field measured stopping sight distance is met in both directions.  
The current AASHTO intersection sight distance and stopping sight distance requirements are met at the proposed Tract J site access street/138th Ave. SE intersection in both directions.