

REVISIONS:

PORTION OF N.E. 1/4 S.W. 1/4 SEC. 34, T. 24N., R. 5 E., W.M.



15445 53RD AVE. S.  
SEATTLE, WA 98188  
PHONE: (206) 431-7970  
FAX: (206) 388-1648  
WEB SITE: PACENG.COM

Pacific  
Engineering  
Design, LLC

Civil Engineering and  
Planning Consultants

TRACT 'J' SUBDIVISION  
CITY OF NEWCASTLE

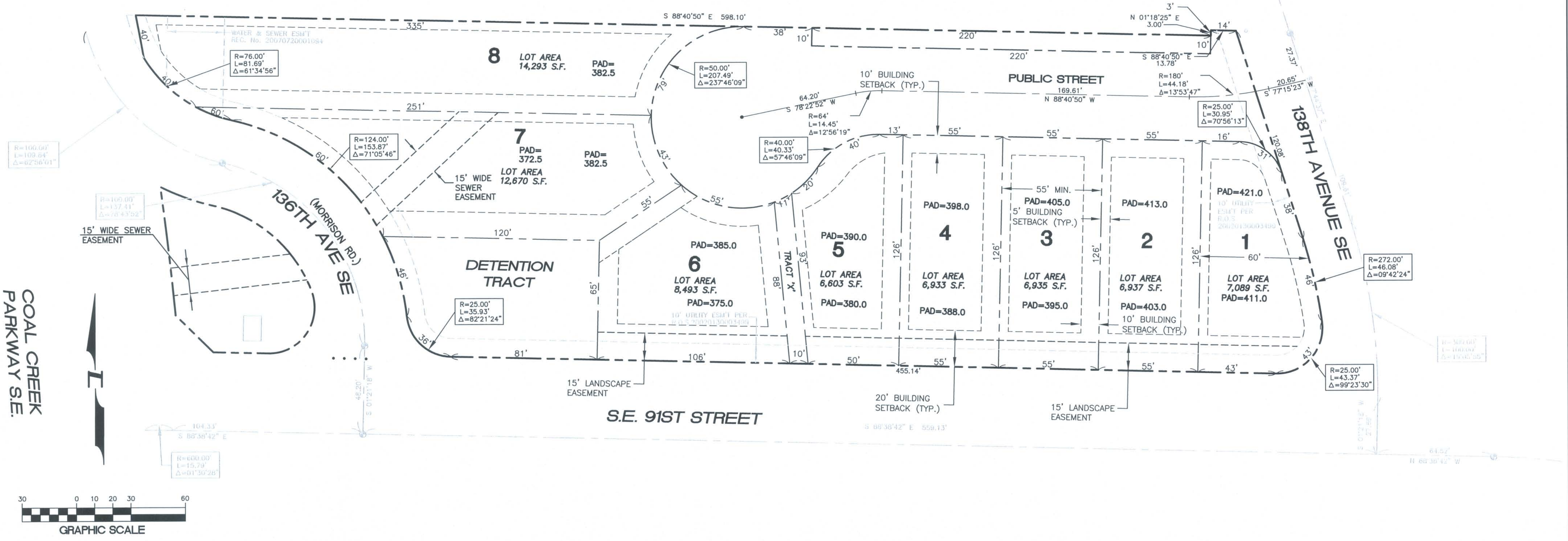
FOR: HIGHLANDS AT NEWCASTLE, LLC  
200 NORTHUP WAY STE 100  
BELLLEVUE, WA 98004-1447  
PHONE: (425) 739-3890  
FAX: (425) 827-0462

PROJECT NO.: 07052  
DRAWN BY: CJB  
ISSUE DATE: 07-02-08  
SHEET REV.: 01-06-09

PRELIMINARY  
PLAT

07052H001-P02.DWG

P02



COAL CREEK  
PARKWAY SE.



**LEGEND**

---	BOUNDARY / PROPERTY LINE
---	CENTERLINE
---	LOT LINE
---	BLDG SETBACK LINE
---	NEW ROW LINE
9,213 SF	LOT AREA