

PORTION OF THE S.E. 1/4, S.E. 1/4, SECTION 4, TOWNSHIP 23 NORTH, RANGE 5 EAST, W.M.

CD: DATE: FILEBOOK: PAGE: DRAWING NO.: C22 SHEET 22 OF 28

PAPER SPACE: REEDSHAW PLAT NE 14TH PL WATER PLAN AND PROFILE

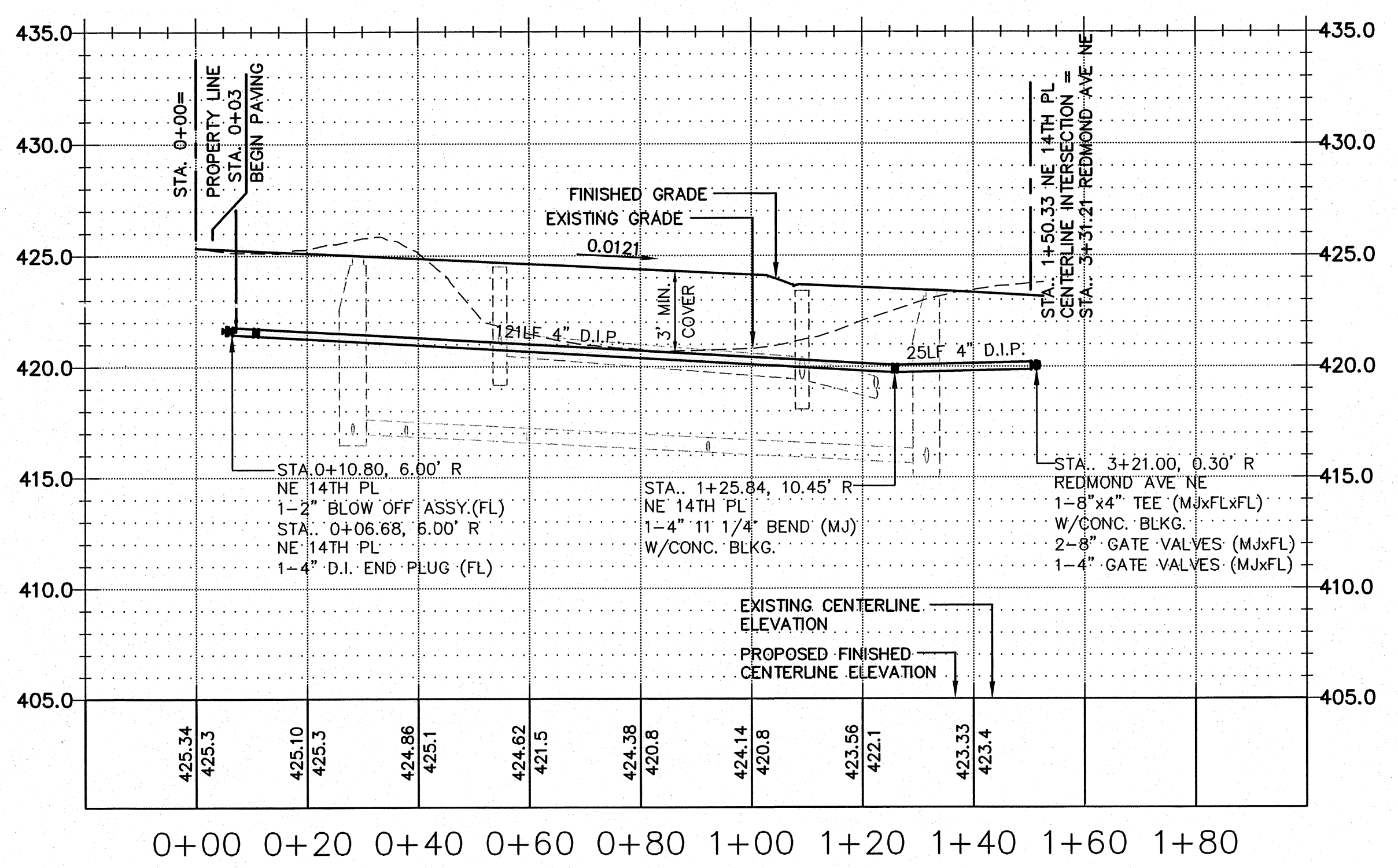
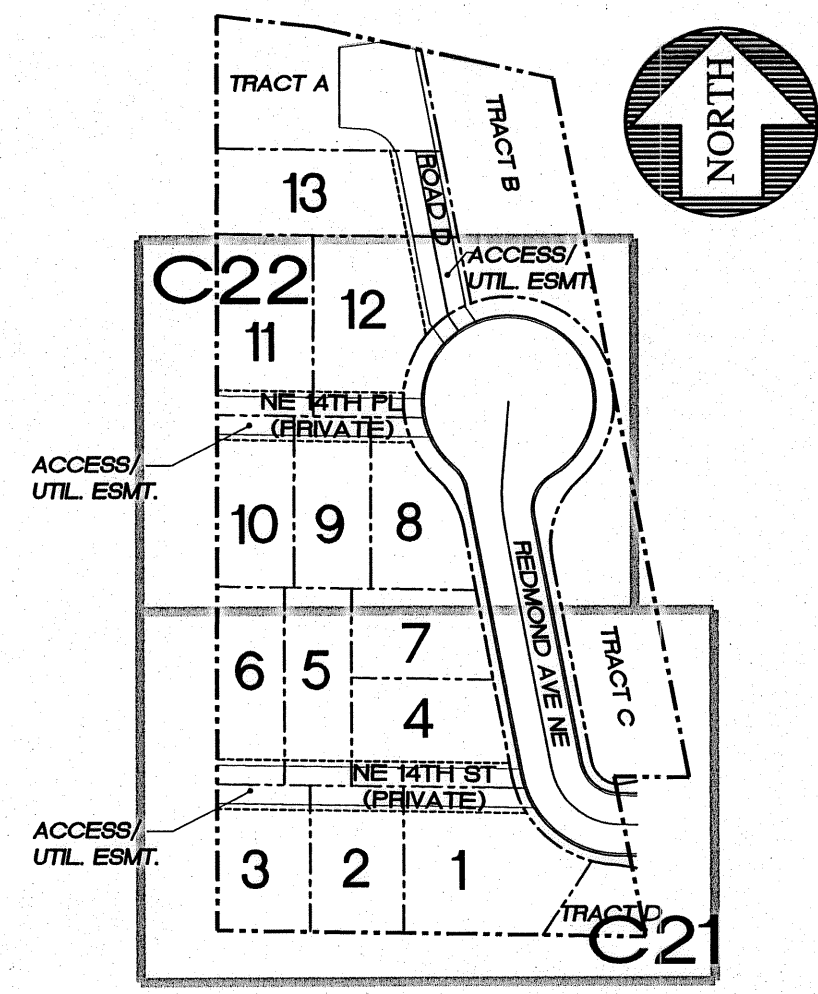
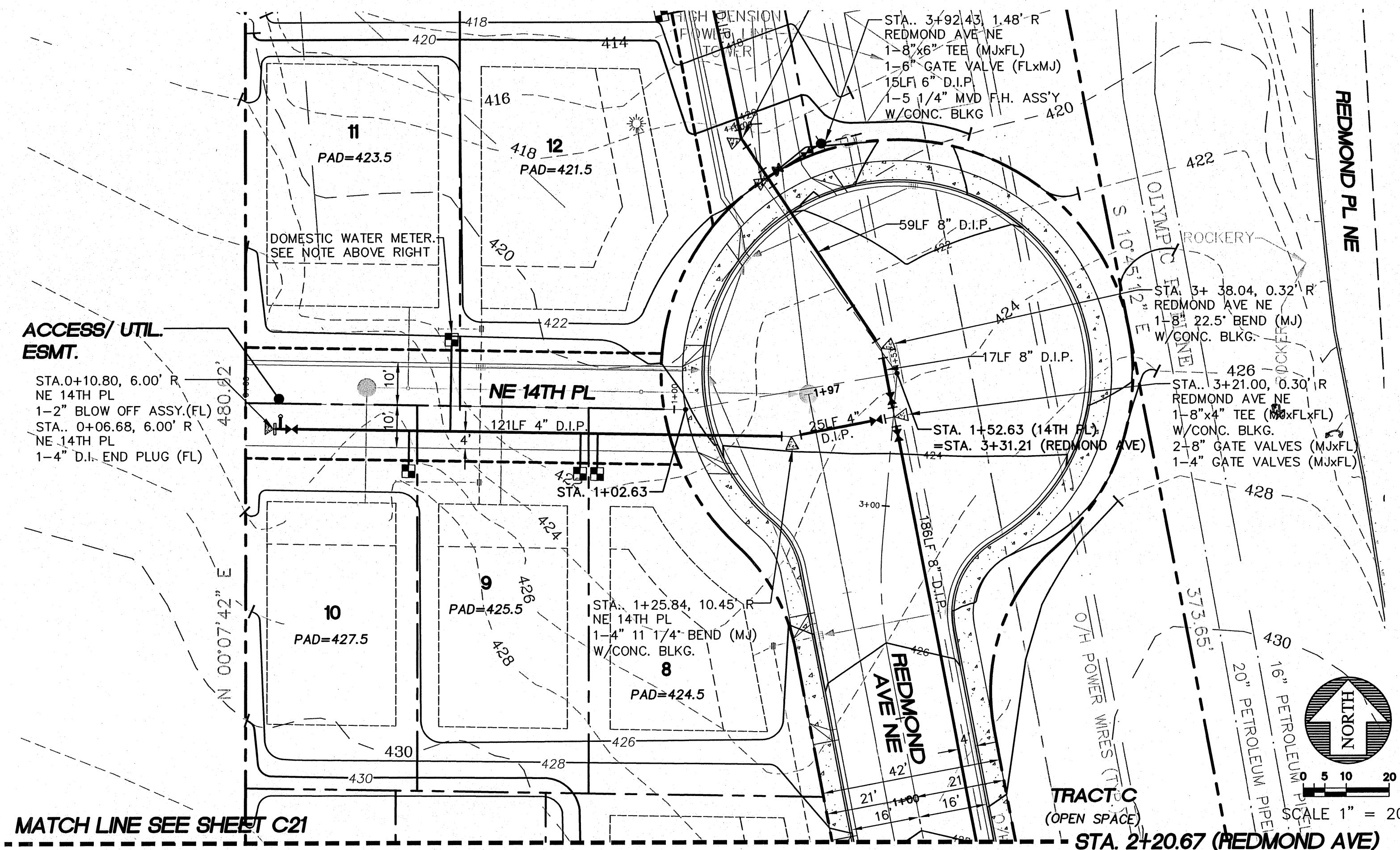
PLOT SCALE: CITY OF RENTON

VERTICAL DATUM: NAVD 88 1185/118

SCALE: 1" = 20'

DATE: 12/07/07

NO.	REVISION	DATE	BY	APPR
2	PER CITY OF RENTON COMMENTS		JGC	



VERTICAL DATUM
VERTICAL DATUM: CITY OF RENTON (NAVD88)

BENCHMARK
SITE BENCH MARK:
A 1-1/2" FLAT BRASS DISC WITH A PUNCH MARK ON A 4" X 4" CONCRETE POST MONUMENT DOWN 0.6' IN A MONUMENT CASE AT THE CONSTRUCTED INTERSECTION OF NE 12TH STREET AND UNION AVENUE NE. (CITY OF RENTON #159)
ELEV. = 415.95'

BASIS OF BEARING
BASIS OF BEARINGS IS PLAT OF HIGHPOINTE DIVISION II (A.K.A. GREENFIELD II), VOL. 216 PG. 30 SITE AREA = 98082.67 S.F. OR 2.25 ACRES +/-

W-337202

CALL 48 HOURS BEFORE YOU DIG 1-800-424-5555

CHECKED FOR COMPLIANCE TO CITY STANDARDS
Date: 12/17/08
Date: Jan 21, 2009
Date: 1/22/09

RECOMMENDED FOR APPROVAL
BY: _____
BY: _____



15445 53RD AVE. S.
SEATTLE, WA 98188
PHONE: (206) 431-7970
FAX: (206) 388-1648
WEB SITE: PACENG.COM

Pacific Engineering Design, LLC
Civil Engineering and Planning Consultants

REEDSHAW PLAT
RENTON, WA

FOR: MASTRO PROPERTIES
510 PANIER AVENUE SOUTH
SEATTLE, WA 98144
PHONE: (206) 276-7124 FAX: (206) 735-4689

PROJECT NO.: 06085
DRAWN BY: ENM
ISSUE DATE: 12/05/06
SHEET REV.: 10/30/07

NE 14TH PL WATER PLAN AND PROFILE

06085WA01-C22.DWG
C22
SHEET 22 OF 28