

# PORTION OF THE S.E. 1/4, S.E. 1/4, SECTION 4, TOWNSHIP 23 NORTH, RANGE 5 EAST, W.M.

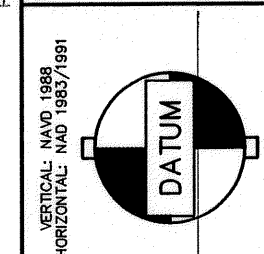
CD: DATE: \_\_\_\_\_  
 PAPER: \_\_\_\_\_  
 DRAWING NO.: C16  
 SHEET 16 OF 28

REVISIONS:

NO.	DATE	REVISION
2		PER CITY OF RENTON COMMENTS

REEDSHAW PLAT  
 STORM DRAINAGE DETAILS

CITY OF RENTON



SCALE: NONE  
 DESIGNED: LEL  
 DRAWN: VK  
 CHECKED: GAD  
 APPROVED: \_\_\_\_\_

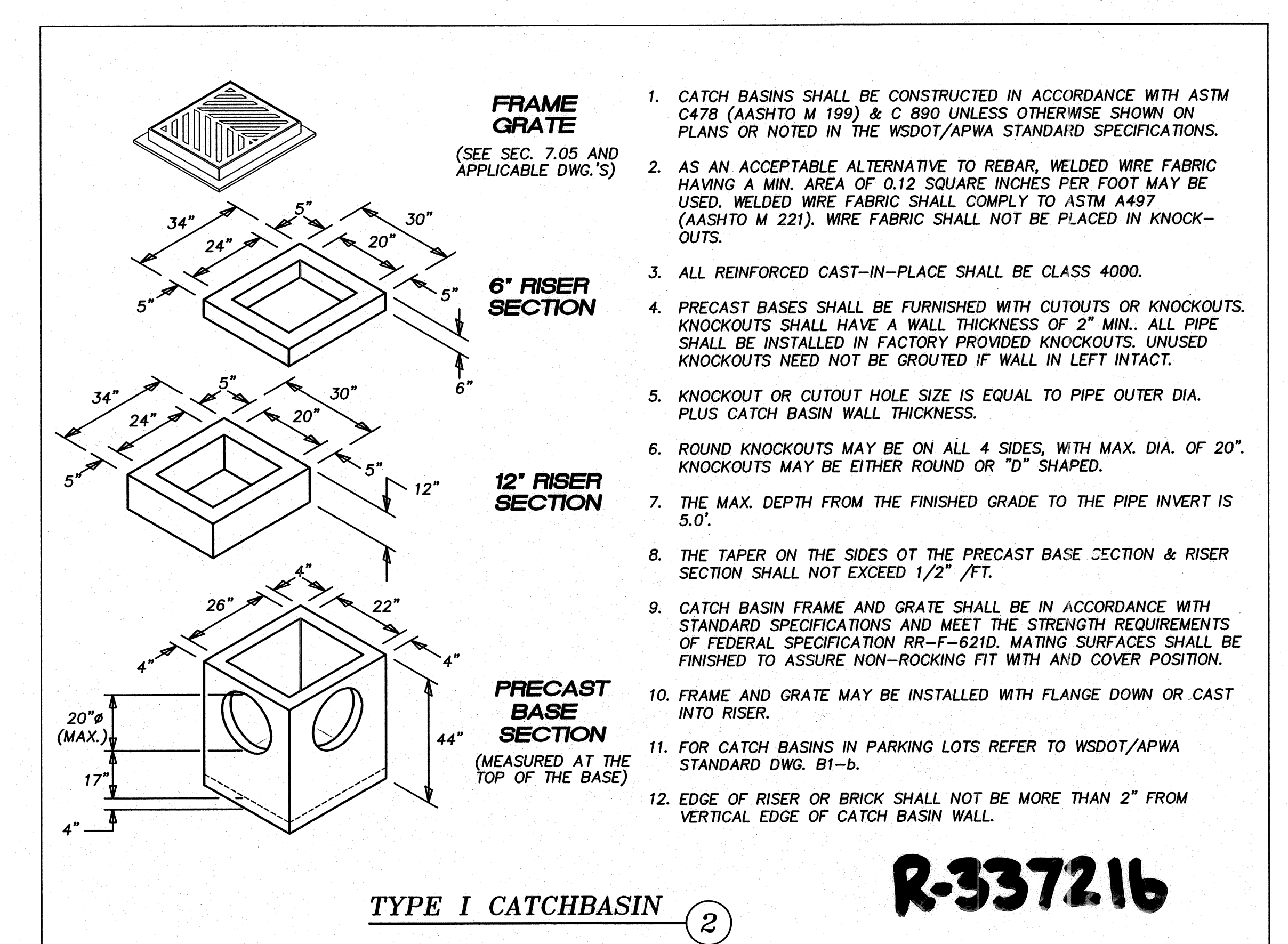
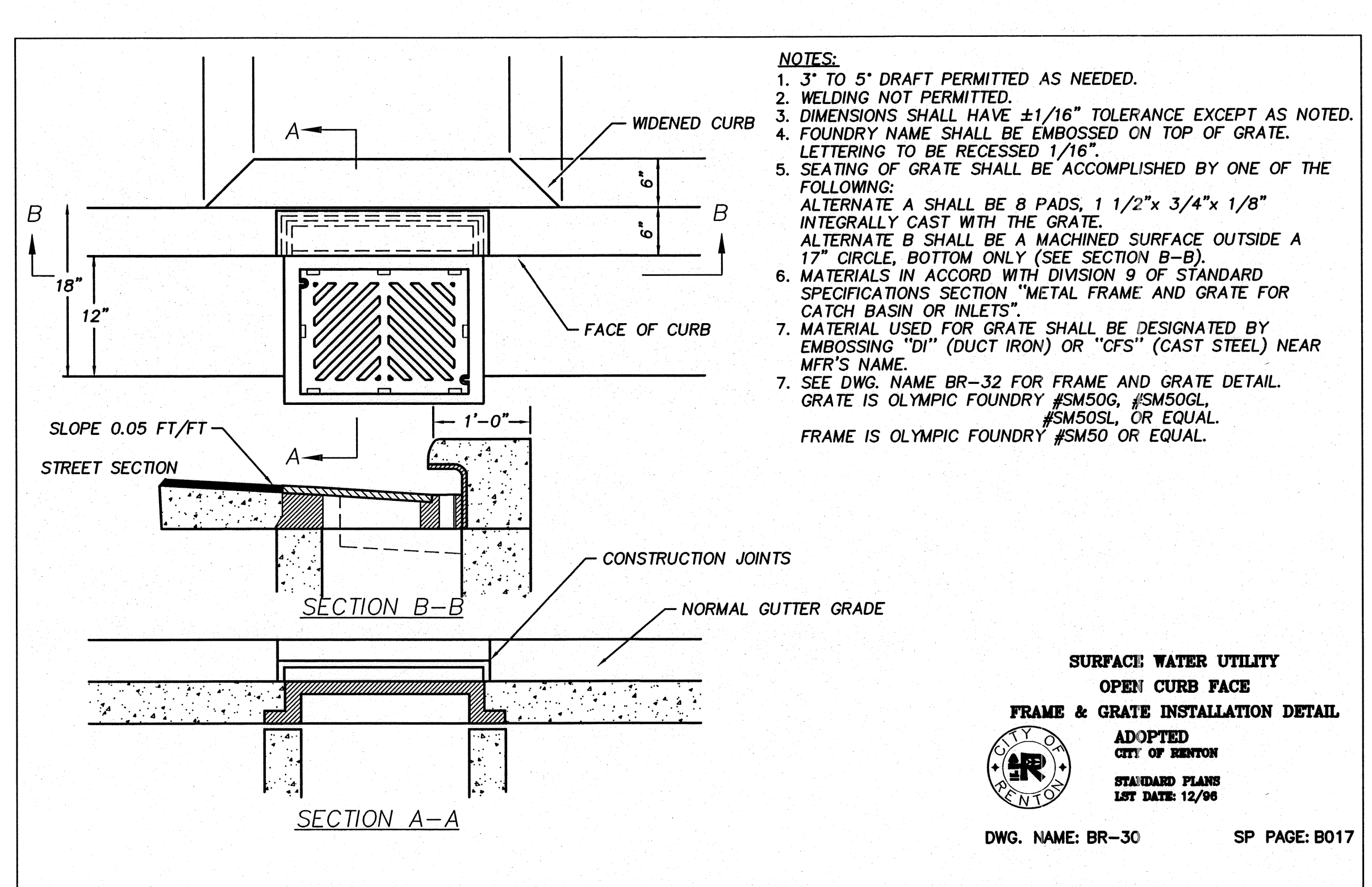
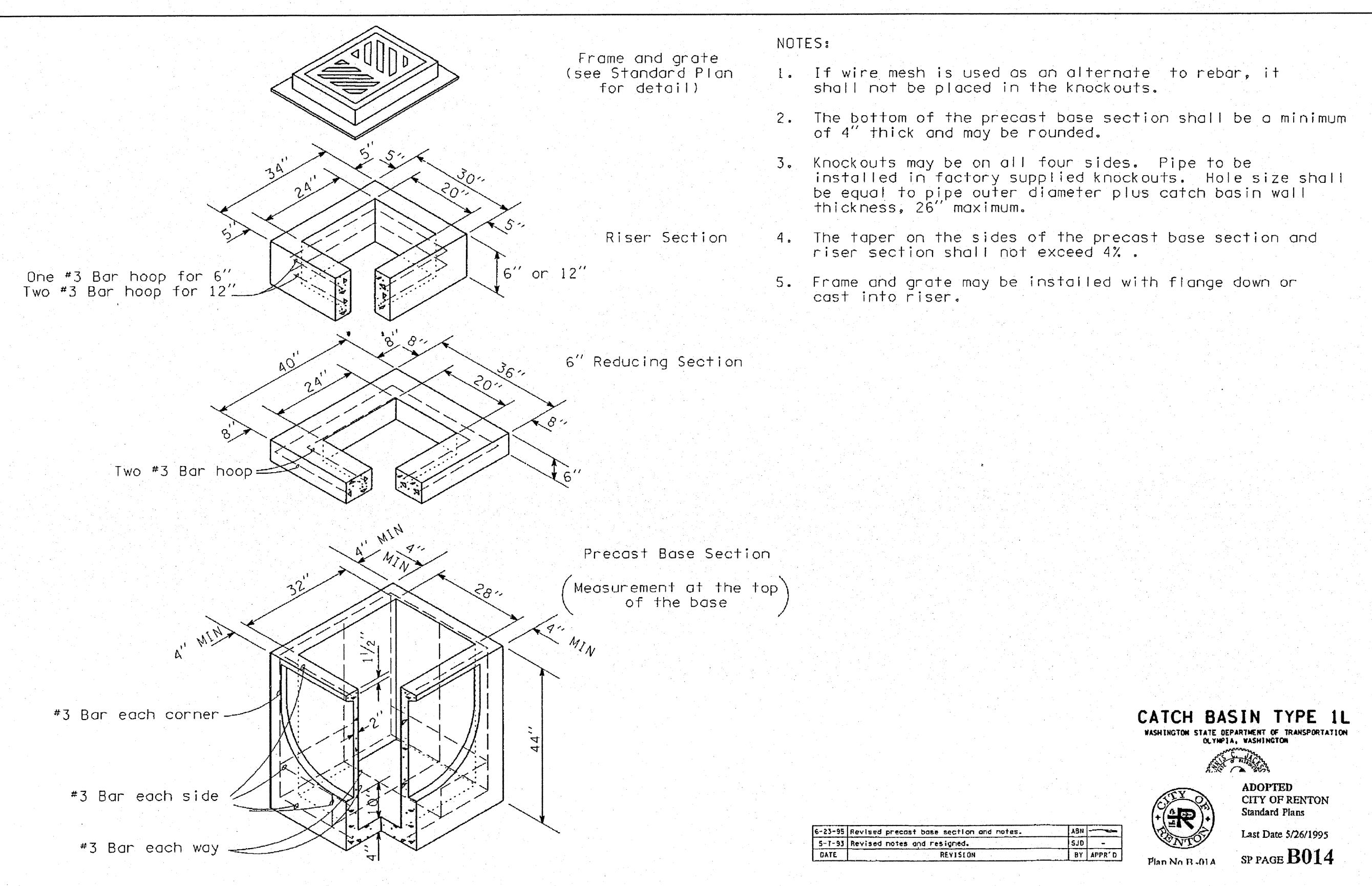
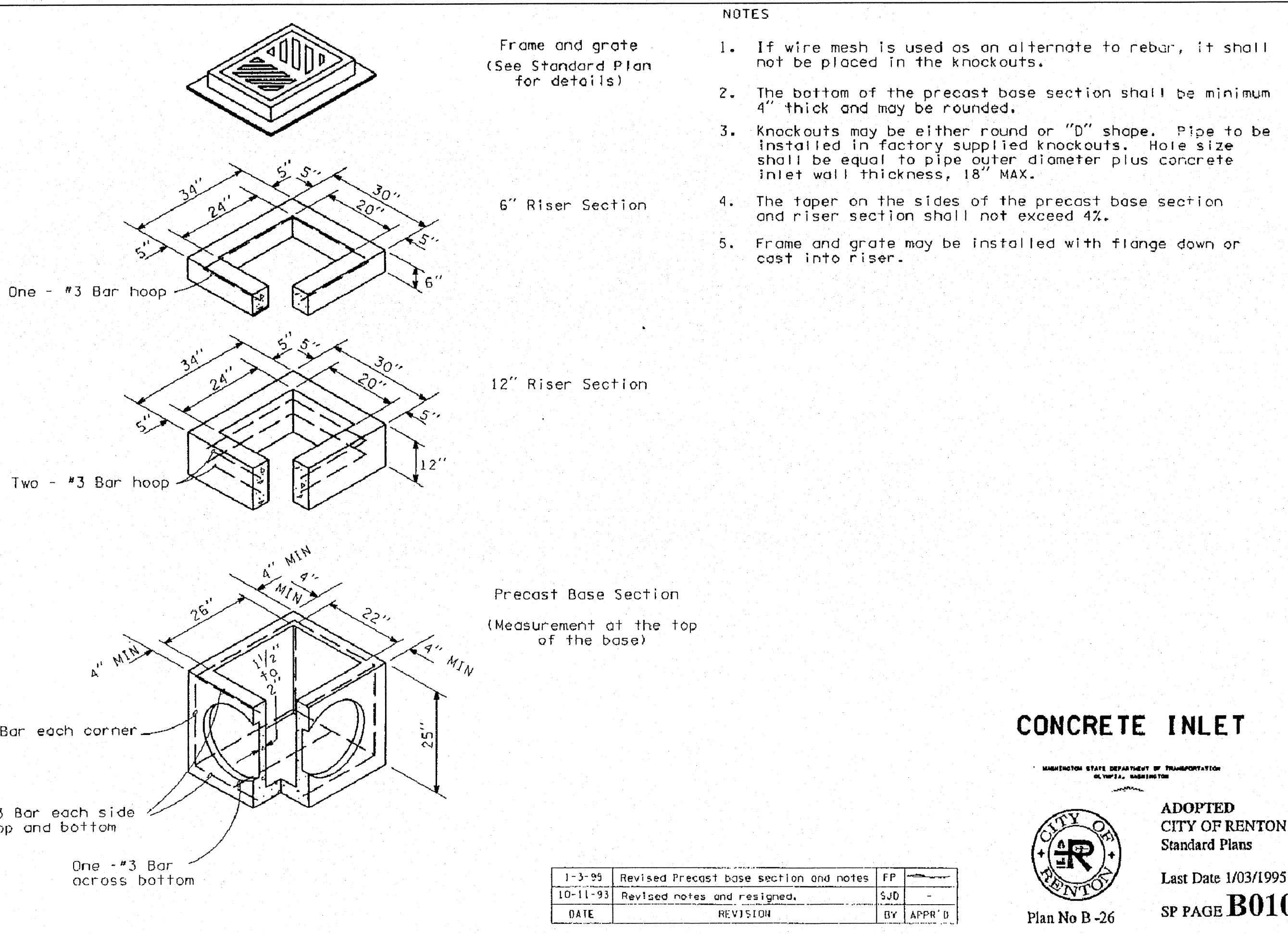
DATE: \_\_\_\_\_

BY: \_\_\_\_\_

PER CITY OF RENTON COMMENTS

REVISION

NO.



CHECKED FOR COMPLIANCE TO CITY STANDARDS  
 Date: \_\_\_\_\_  
 RECOMMENDED FOR APPROVAL  
 BY: \_\_\_\_\_  
 Date: \_\_\_\_\_



15445 53RD AVE. S.  
 SEATTLE, WA 98188  
 PHONE: (206) 431-7970  
 FAX: (206) 388-1648  
 WEB SITE: PACENG.COM

**Pacific Engineering Design, LLC**

Civil Engineering and Planning Consultants

REEDSHAW PLAT  
 RENTON, WA

FOR: MASTRO PROPERTIES  
 510 RAINIER AVENUE SOUTH  
 SEATTLE, WA 98144  
 PHONE: (206) 276-7124 FAX: (206) 735-4689

PROJECT NO.: 06085  
 DRAWN BY: VK  
 ISSUE DATE: 12/05/06  
 SHEET REV.: 10/30/07

STORM DRAINAGE DETAILS

06085D03-C16.DWG  
**C16**  
 SHEET 16 OF 28