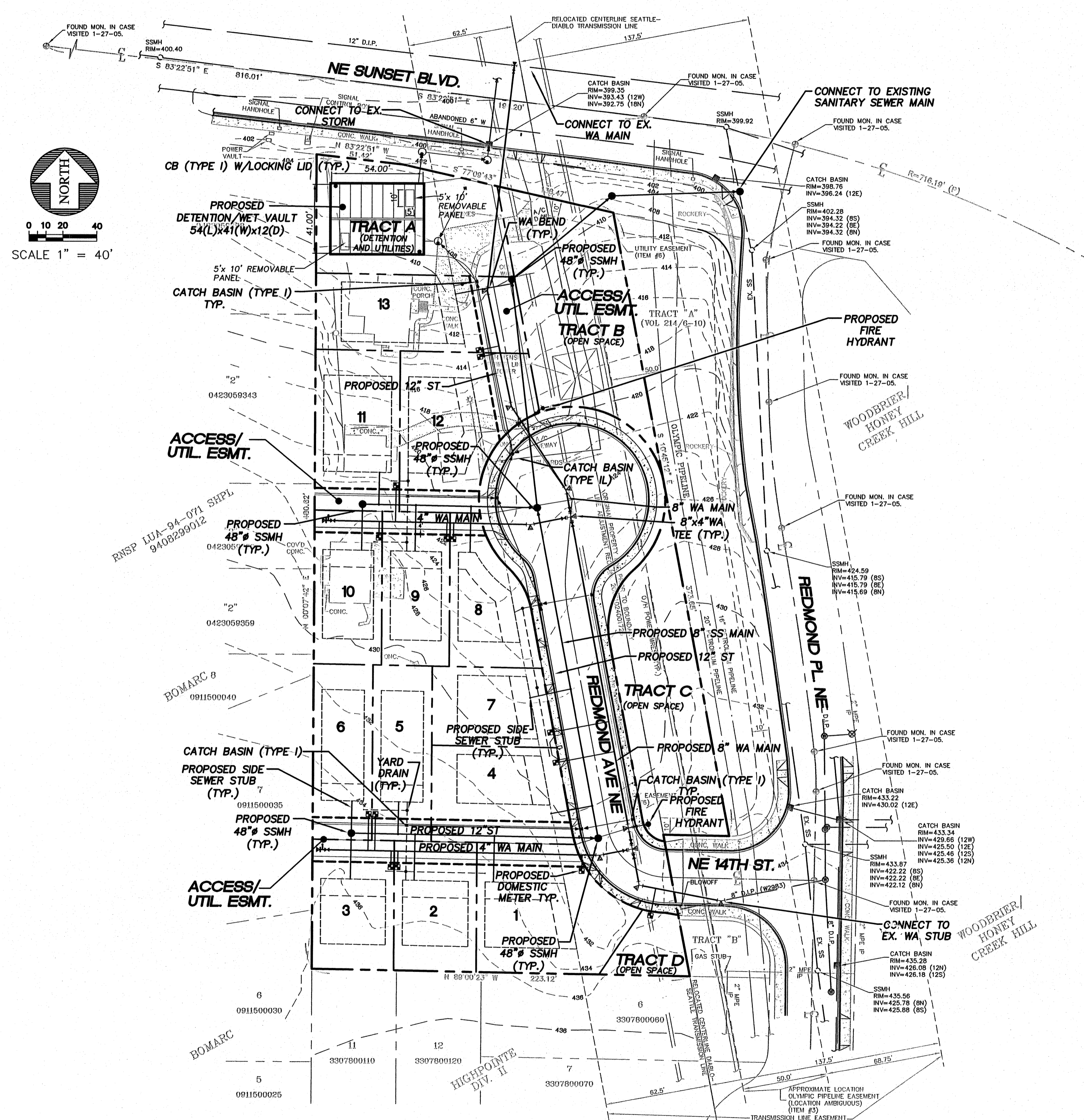


PORTION OF THE S.E. 1/4, S.E. 1/4, SECTION 4, TOWNSHIP 23 NORTH, RANGE 5 EAST, W.M.

DATE: _____	FILE NO: _____	DRAWING NO.: C06	SHEET 6 OF 28
REEDSHAW PLAT			
COMPOSITE UTILITY PLAN			
CITY OF RENTON			
DATUM			
SCALE: 1" = 40'	ONE INCH AT FULL SCALE IS NOT NECESSARILY ONE INCH AT THIS SCALE		
DESIGNED: LEL	CHECKED: GAD	DATE: 08-20-07	APPROVED: LEL
DRAWN: VK	CHECKED: GAD	DATE: 10-30-07	APPROVED: LEL
PER CITY OF RENTON COMMENTS			
NO.	BY	DATE	REVISION
2	JGC	10/30/07	PER CITY OF RENTON COMMENTS



LEGEND

- SANITARY SEWER CLEANOUT
- SANITARY SEWER MANHOLE
- FIRE HYDRANT ASSEMBLY
- CAP, WATER MAIN W/TEMPORARY 2" BLOWOFF ASSEMBLY
- WATER METER
- ELBOW
- CB TYPE I
- CB TYPE I W/SOLID LOCKING LID
- CB TYPE II
- CB TYPE II W/SOLID LOCKING LID
- PROPOSED EASEMENT
- PROPOSED 8" DOWNSPOUT MANIFOLD
- PROPOSED 6" DRIVEWAY DRAIN CONNECTION
- PROPOSED SIDEWALK

BASIS OF BEARING
BASIS OF BEARINGS IS PLAT OF HIGHPOINT DIVISION II (A.K.A. GREENFIELD II), VOL. 216 PG. 30 SITE AREA = 98082.67 S.F. OR 2.25 ACRES +/-

VERTICAL DATUM
VERTICAL DATUM: CITY OF RENTON (NAVD88)

BENCHMARK
SITE BENCH MARK:
A 1-1/2" FLAT BRASS DISC WITH A PUNCH MARK ON A 4" X 4" CONCRETE POST MONUMENT DOWN 0.6' IN A MONUMENT CASE AT THE CONSTRUCTED INTERSECTION OF NE 12TH STREET AND UNION AVENUE NE. (CITY OF RENTON #159)
ELEV. = 415.95'

R-337206

CALL 48 HOURS BEFORE YOU DIG
1-800-424-5555

CHECKED FOR COMPLIANCE TO CITY STANDARDS	RECOMMENDED FOR APPROVAL
Date _____	BY: <i>[Signature]</i> 10/1/08
Date _____	BY: _____
Date _____	



15445 53RD AVE S.
SEATTLE, WA 98188
PHONE: (206) 431-7970
FAX: (206) 388-1648
WEB SITE: PACENG.COM

Pacific Engineering Design, LLC

Civil Engineering and Planning Consultants

REEDSHAW PLAT

RENTON, WA

FOR: MASTRO PROPERTIES
510 RAINIER AVENUE SOUTH
SEATTLE, WA 98144
PHONE: (206) 276-7124 FAX: (252) 735-4689

PROJECT NO.: 06085
DRAWN BY: VK
ISSUE DATE: 12/05/06
SHEET REV.: 10/30/07

COMPOSITE UTILITY PLAN

06085CU01-C06.DWG

C06

SHEET 6 OF 28