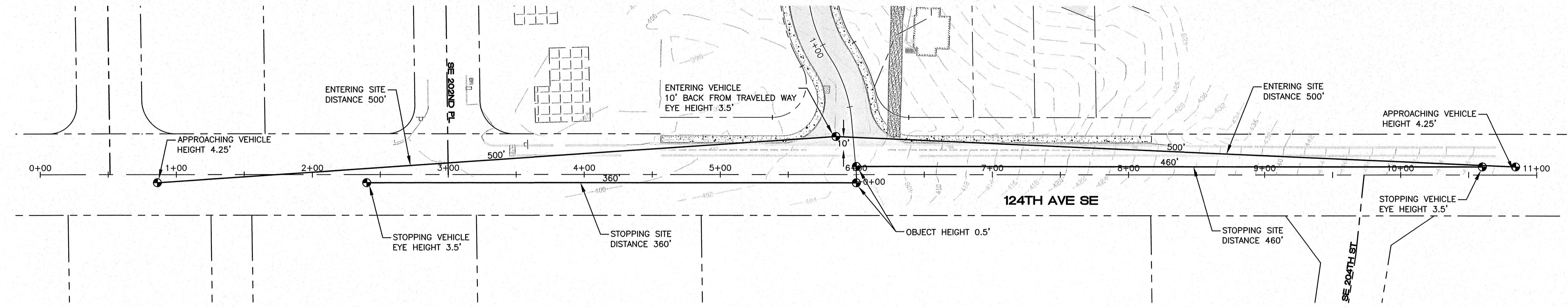
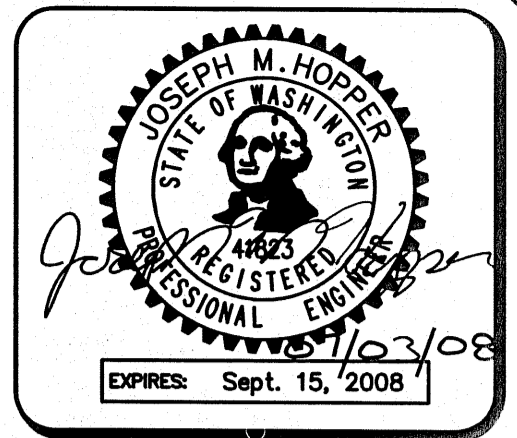
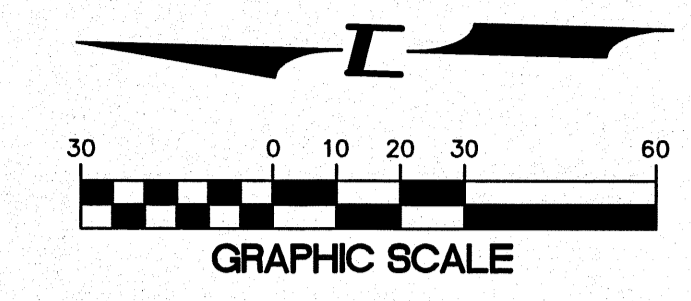


PORTION OF THE NW 1/4, SE 1/4, SECTION 4, T. 22 N., R. 5 E., W.M.

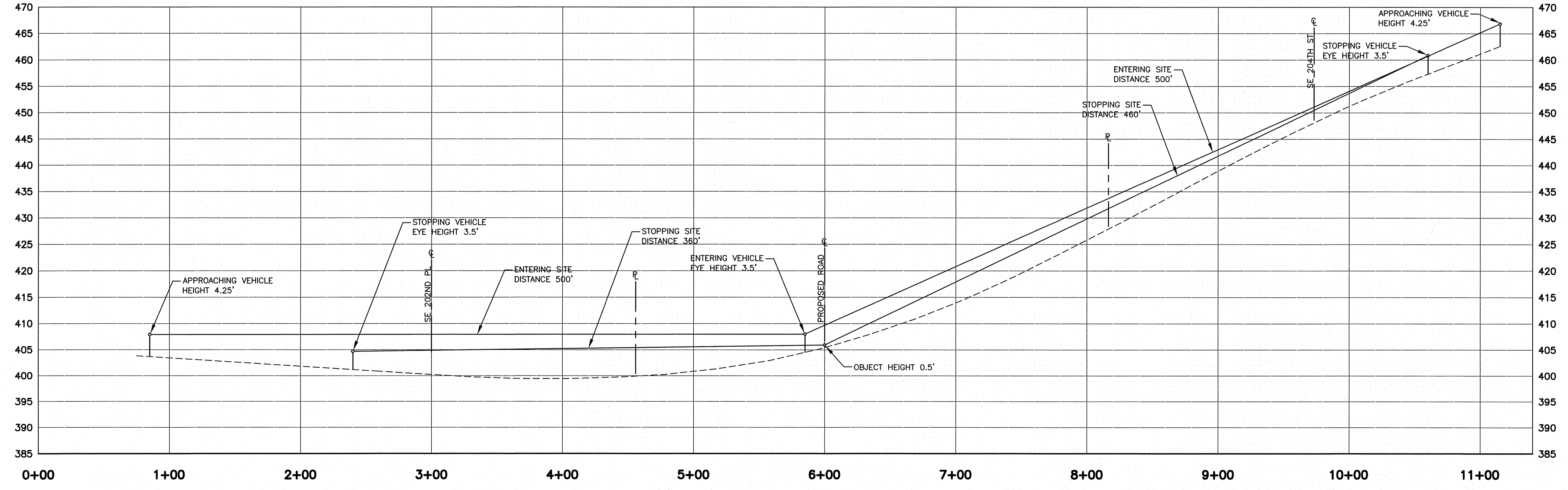


**NOTES:**  
 POSTED SPEED = 35MPH  
 DESIGN SPEED = 45MPH  
 ENTERING SITE DISTANCE REQUIRED = 500'  
 STOPPING SITE DISTANCE REQUIRED = 460' (NORTH BOUND)  
 360' (SOUTH BOUND)

**LEGEND**

- SITE DISTANCE MARKER
- SITE DISTANCE LINE
- ▨ PROPOSED PAVEMENT
- ▤ PROPOSED SIDEWALK
- - - BUILDING ENVELOPE
- - - PROPOSED ROW
- - - EXISTING CONTOURS

124TH AVE PROFILE  
 HORIZONTAL 1"=40'  
 VERTICAL 1"=10'



15445 53RD AVE. S.  
 SEATTLE, WA 98188  
 PHONE: (206) 431-7970  
 FAX: (206) 388-1648  
 WEB SITE: PACENG.COM

**Pacific Engineering Design, LLC**  
 Civil Engineering and Planning Consultants

**GLENDELLE PLAT**  
 KING COUNTY, WA  
 FOR: GLENDELLE L.L.C.  
 830 1ST AVE  
 SEATTLE, WA 98101  
 PHONE: (206) 228-1005 FAX: (206) 826-6475

PROJECT NO.: 06053  
 DRAWN BY: ENM  
 ISSUE DATE: 07-03-08  
 SHEET REV.:

PRELIMINARY SITE DISTANCE PLAN AND PROFILE

06053PR01.DWG  
**P05**  
 SHEET 05 OF 06