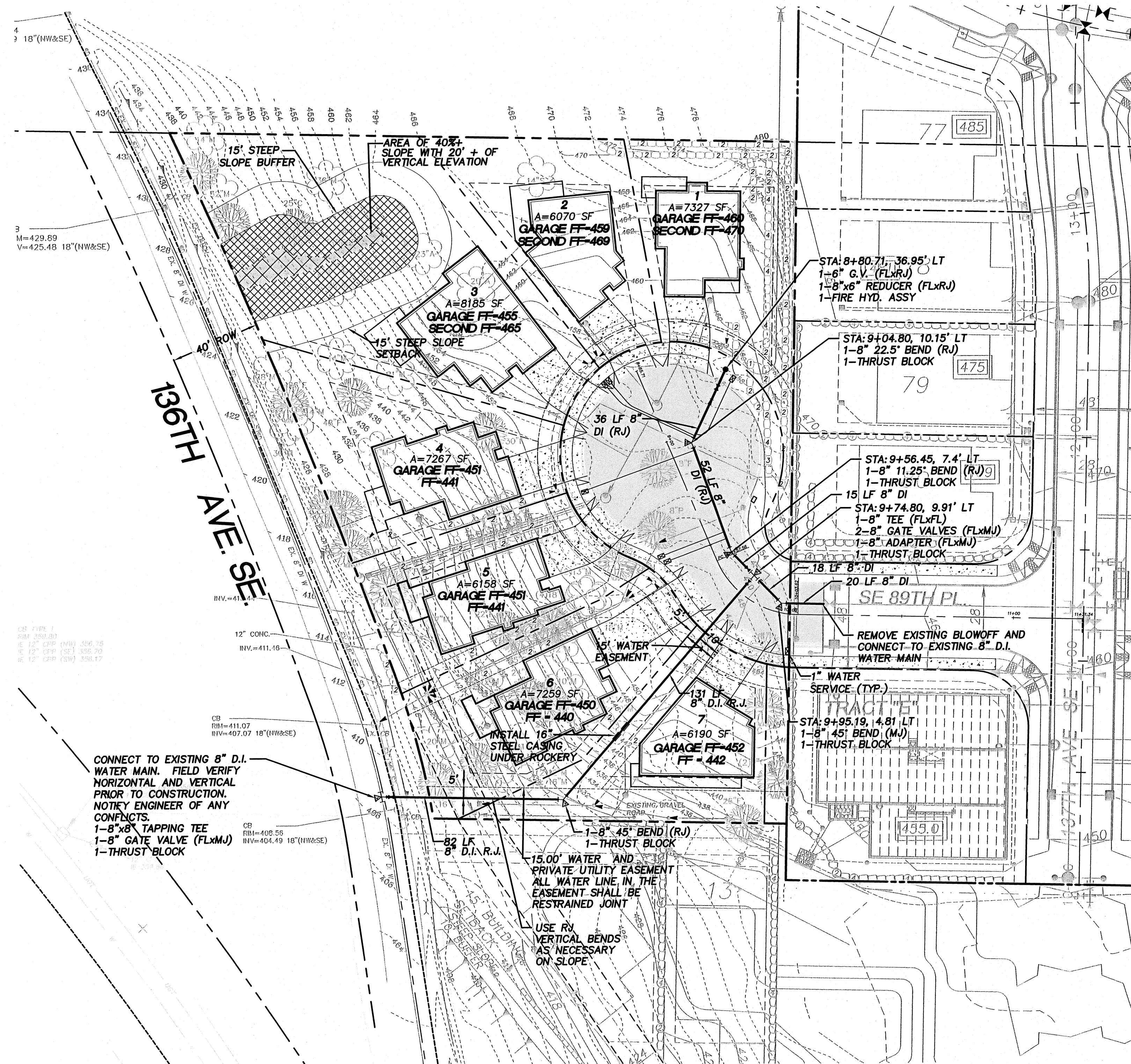


# NW 1/4 OF SW 1/4 OF SEC. 34, T. 24 N., R. 05 E., W.M. VARNEY SUBDIVISION

## WATER PLANS

## CITY OF NEWCASTLE



### OWNERS

MARK AND DORTHEA VARNEY  
GREACEN CONSTRUCTION, INC  
1140 140TH AVE NE STE D  
BELLEVUE, WA 98005-2976  
PHONE: (425) 746-6440  
FAX: (425) 766-2303

### PROJECT ENGINEER/PLANNER

PACIFIC ENGINEERING DESIGN, LLC  
15445 53RD AVE. S.  
SEATTLE, WA 98188  
PHONE: (206) 431-7970  
FAX: (206) 388-1648  
WEB SITE: PACENG.COM

### SURVEYOR

HANSEN SURVEYING  
17420 116TH AVE S.E.  
RENTON, WA 98058  
PHONE: (425) 235-8440  
FAX: (425) 235-0266

### GEOTECH

EARTH SOLUTIONS NW, LLC  
2881 152ND AVENUE N. E.  
REDMOND, WA 98052  
PHONE: (425) 284-3300  
FAX: (425) 284-2855

### SHEET INDEX

- 1 WATER PLAN/COVER SHEET
- 2 STANDARDS NOTES
- 3 STANDARDS DETAILS

### CAUTION

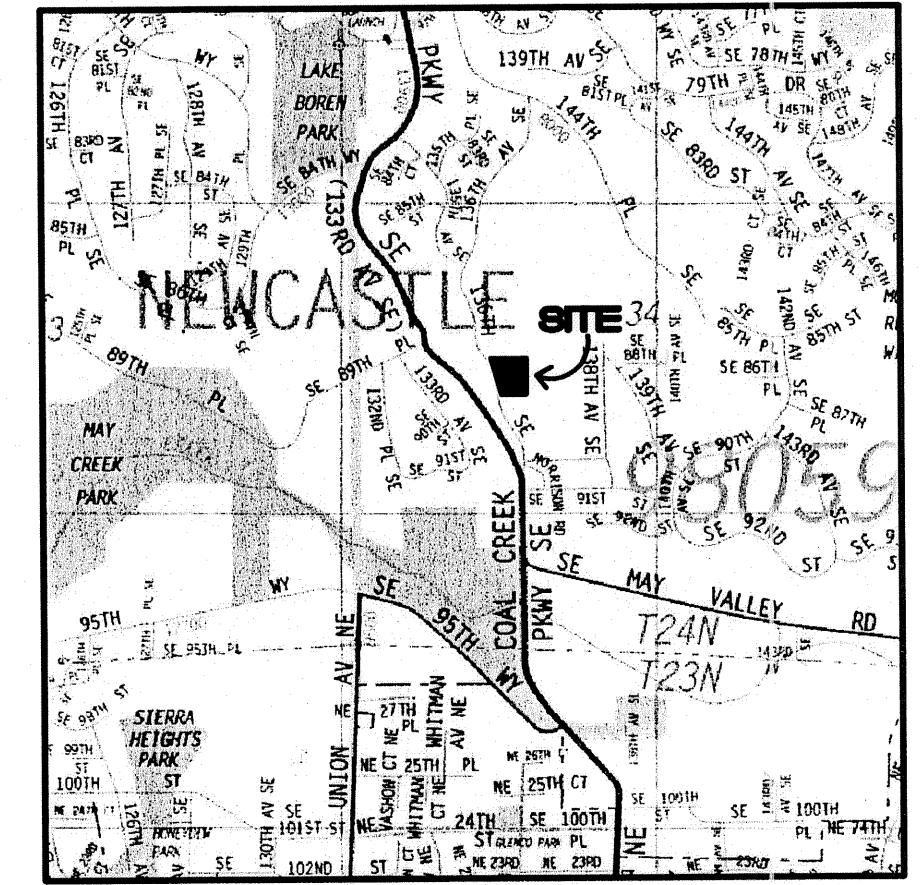
LOCATION OF EXISTING UTILITIES SHOWN IS APPROXIMATE AND MAY NOT BE ACCURATE OR ALL INCLUSIVE. IT IS THE CONTRACTOR'S RESPONSIBILITY TO FIELD VERIFY LOCATION OF UTILITIES PRIOR TO PROCEEDING WITH CONSTRUCTION.

### UTILITY PURVEYORS

WATER: COAL CREEK UTILITY DISTRICT  
SEWER: COAL CREEK UTILITY DISTRICT  
POWER: PUGET SOUND ENERGY  
TELEPHONE: QWEST COMMUNICATIONS  
SCHOOL DISTRICT: ISSAQUAH #411  
FIRE DISTRICT: BELLEVUE FIRE DISTRICT

### GENERAL NOTES

1. MAXIMUM ALLOWABLE DEFLECTION ON EACH JOINT SHALL NOT EXCEED ONE-HALF THE MANUFACTURER'S RECOMMENDED PERMISSIBLE DEFLECTION.
2. ALL CONSTRUCTION SHALL BE IN ACCORDANCE WITH COAL CREEK UTILITY DISTRICT STANDARD SPECIFICATIONS.
3. LOCATIONS OF THE EXISTING UTILITIES SHOWN ARE APPROXIMATE. EXISTING UTILITIES SHALL BE FIELD LOCATED BY REPRESENTATIVE UTILITY COMPANIES PRIOR TO CONSTRUCTION.
4. CONTRACTOR SHALL FIELD VERIFY ALL CONNECTIONS TO EXISTING PIPES FOR PROPER FITTING AND DEPTH.
5. CONTRACTOR SHALL NOTIFY ALL AFFECTED UTILITIES 24 HOURS PRIOR TO CONSTRUCTION.
6. ALL ADAPTERS ARE TO BE DUCTILE IRON FITTINGS.
7. VALVE POST MARKERS ARE TO BE INSTALLED FOR VALVES LOCATED OUT OF ASPHALTED AREAS.
8. "FIELD LOK" GASKETS MAY BE REQUIRED BY DISTRICT ON STEEP SLOPES.



VICINITY MAP

### SITE INFORMATION

PROPERTY ADDRESS: 8824 136TH AVE. SE.  
NEWCASTLE, WA 98059  
EXISTING SITE ZONING: R-6, CITY OF NEWCASTLE  
TOTAL SITE AREA: 1.5 AC  
PROPOSED LAND USE: SINGLE FAMILY DETACHED  
PROPERTY PARCEL NO.: 3424059012  
PROPOSED NUMBER OF LOTS: 7 LOTS  
PROPOSED DWELLING UNITS: 7 DWELLING UNITS

Approved By:  
Coal Creek Utility District  
Date 7/24/07 *[Signature]*

CALL BEFORE YOU DIG  
Call: TOLL FREE  
1-800-424-5555



EXPIRES: MAY 6, 2007

DESIGNED				
DRAWN	TJR	REVISED PER COAL CREEK UTILITY DISTRICT COMMENTS	09/12/08	JGC DGS
CHECKED	JWNSON	REVISE WATER PER COAL CREEK UTILITY DISTRICT COMMENTS	08/21/08	JGC DGS
		REVISION	DATE	BY

**Pacific Engineering Design, LLC**  
15445 53RD AVE. S. SEATTLE, WA 98188  
PHONE: (206) 431-7970 FAX: (206) 388-1648  
WEB SITE: PACENG.COM  
Civil Engineering and Planning Consultants

**COAL CREEK UTILITY DISTRICT**  
6801 132ND PLACE S.E.  
NEWCASTLE, WASHINGTON 98059

REFERENCE INFORMATION	DATE
FIELD BOOK:	JULY 26, 2007
SURV. CPU FILE:	SCALE
DATUM: NAD83	NOTED

**VARNEY WATER EXTENSION  
WATER PLAN/COVER SHEET**

JOB NUMBER	07019.00
DWG NO. 06015WA.DWG	
SHEET	1 OF 3