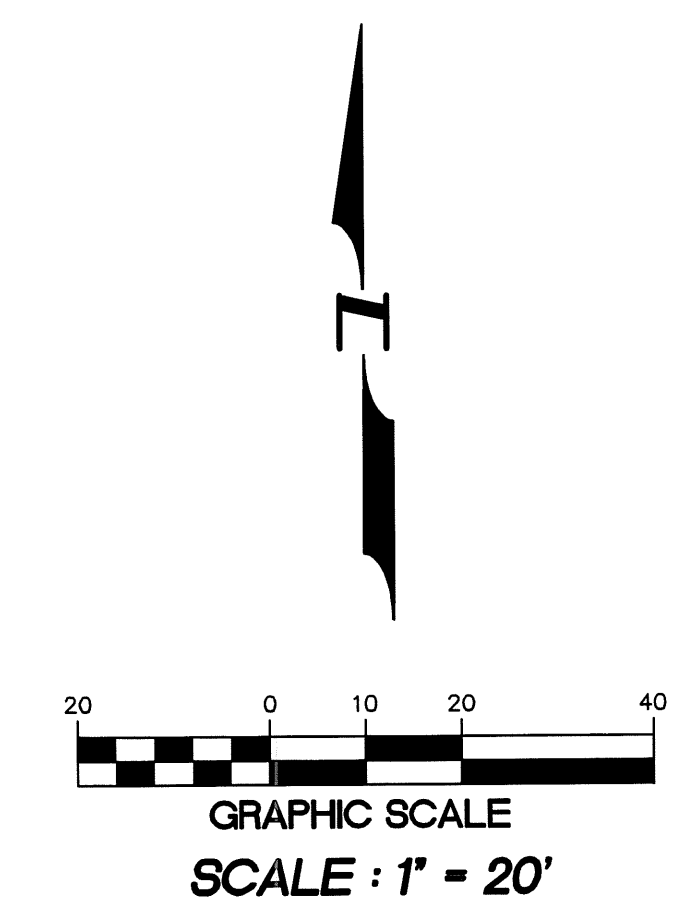
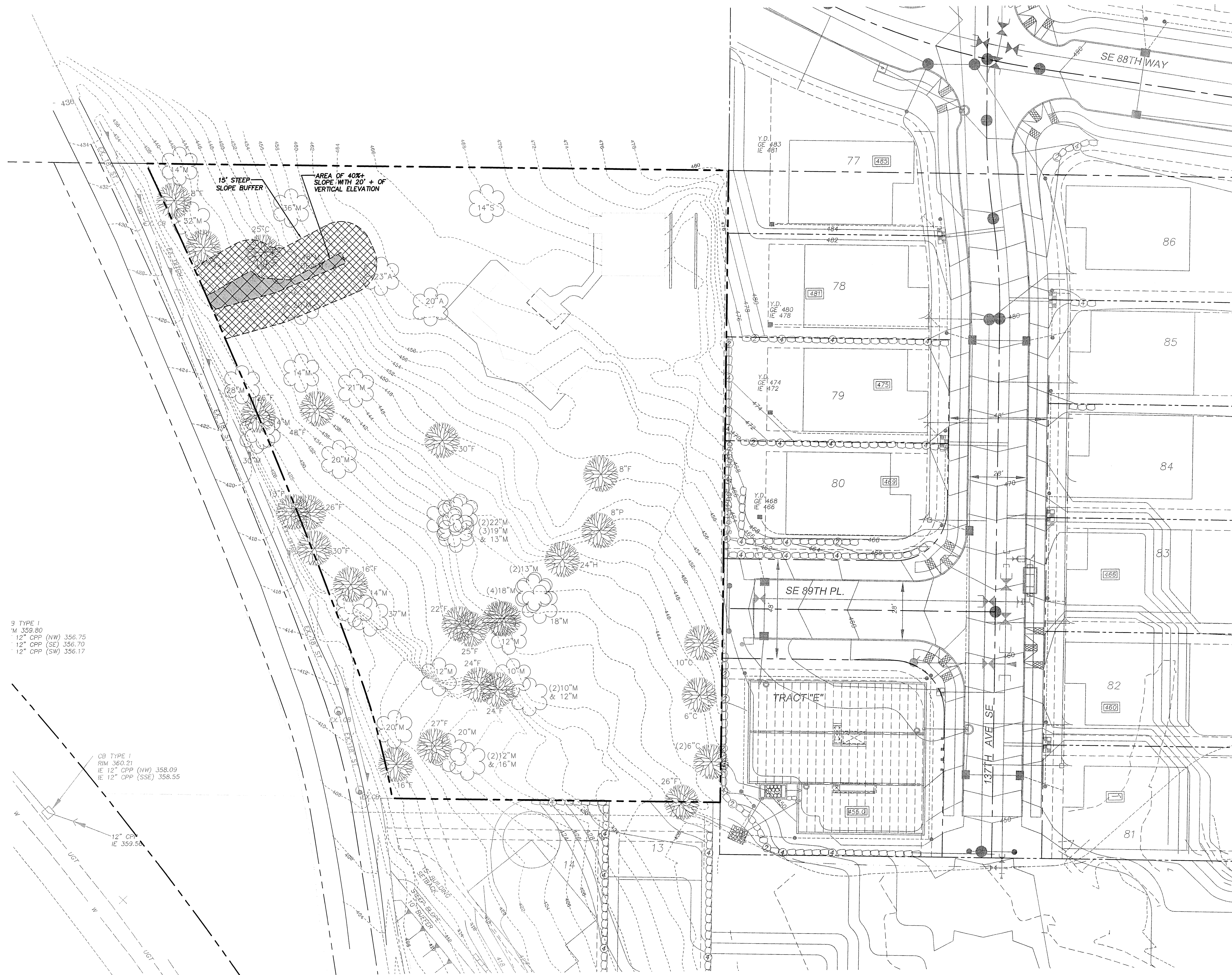


NW 1/4 OF SW 1/4 OF SEC. 34, T. 24 N., R. 05 E., W.M.



BENCH MARK
 VERTICAL DATUM : NAVD 88
 CITY OF RENTON BENCH MARK # RENT 2094
 TOP OF NAIL IN CONCRETE MONUMENT IN CASE AT
 INTERSECTION OF SE 89TH PLACE AND 133RD AVE, SE
 ELEVATION=346.43 FEET

BASIS OF BEARINGS
 S88°47'51"E ALONG CENTERLINE OF SE89TH PLACE

SITE SURVEY PROVIDED BY :
 HANSEN SURVEYING
 LAND SURVEYORS & CONSULTANTS
 17420 116TH AVE. S.E., RENTON, WA 98058
 TEL: 425-235-8440 FAX: 425-235-0266

DATED : 05/26/06

3 TYPE 1
 M 359.80
 12" CPP (NW) 356.75
 12" CPP (SE) 356.70
 12" CPP (SW) 356.17

CG TYPE 1
 RIM 360.21
 IE 12" CPP (NW) 358.09
 IE 12" CPP (SSE) 358.55

12" CP
 IE 359.50



15445 53RD AVE. S.
 SEATTLE, WA 98188
 PHONE: (206) 431-7970
 FAX: (206) 388-1648
 WEB SITE: PACENG.COM

Pacific Engineering Design, LLC
 Civil Engineering and Planning Consultants

VARNEY SUBDIVISION
 CITY OF NEWCASTLE

FOR: GREACEN HOMES, LLC.
 1140 140TH AVE NE SITE D
 BELLEVUE, WA 98005
 PHONE: (425) 746-6440 FAX: (425) 766-2303

PROJECT NO.: **06015**
 DRAWN BY: **JGC**
 ISSUE DATE: **02-01-08**
 SHEET REV.:

EXISTING CONDITIONS PLAN

CD\06015EC01-C12.DWG
C12