

NW 1/4 OF SW 1/4 OF SEC. 34, T. 24 N., R. 05 E., W.M.

APPROVED FOR CONSTRUCTION

BY: _____ DATE: _____
CITY OF NEWCASTLE

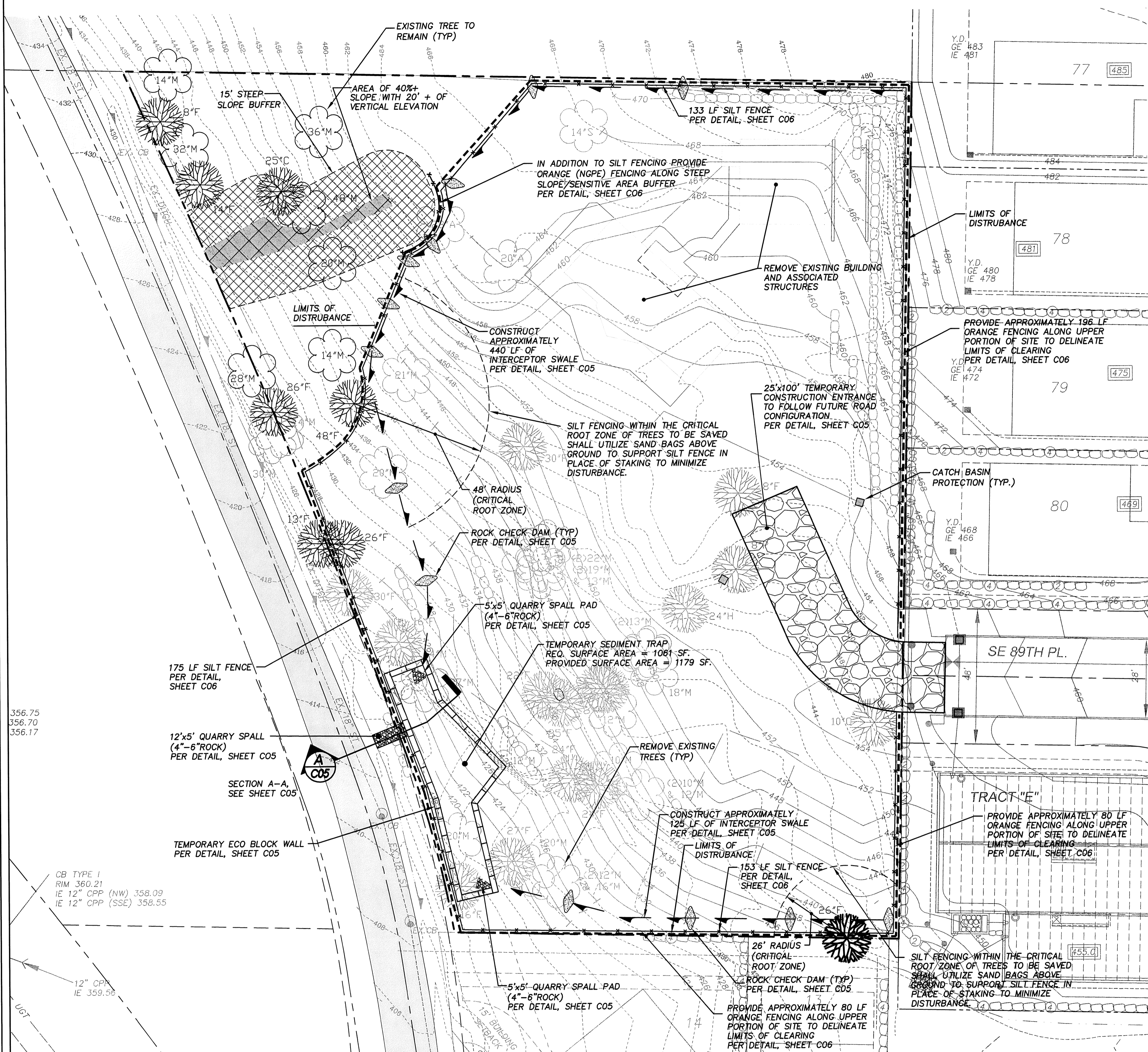
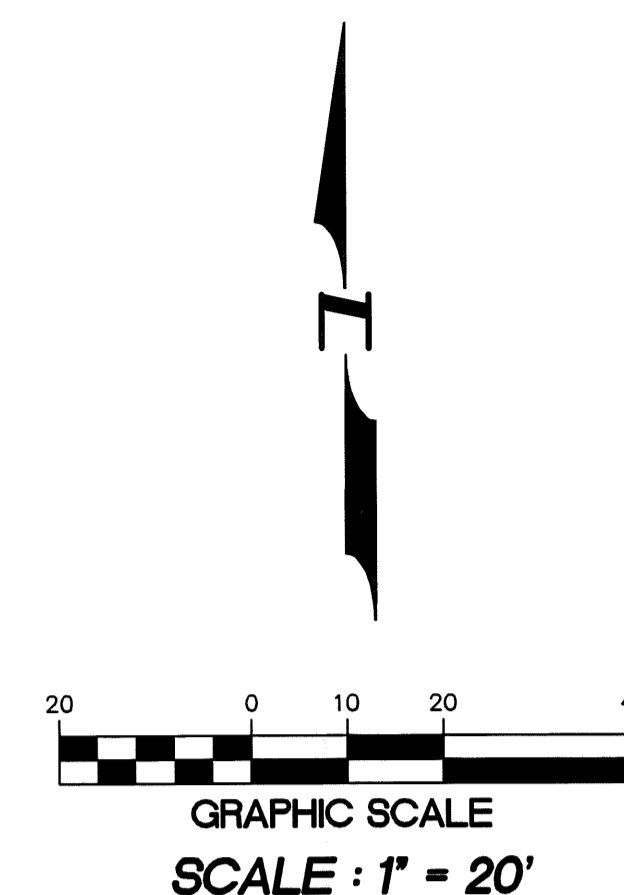
THESE DRAWINGS ARE APPROVED FOR CONSTRUCTION FOR A PERIOD OF 12 MONTHS FROM THE DATE SHOWN HEREON. THE CITY RESERVES THE RIGHT TO MAKE REVISIONS, ADDITIONS, DELETIONS, OR MODIFICATIONS SHOULD CONSTRUCTION BE DELAYED BEYOND THIS TIME LIMITATION. THE CITY, BY APPROVING THESE DRAWINGS, ASSUMES NO LIABILITY IN REGARDS TO THEIR ACCURACY OR OMISSIONS.

BENCH MARK

VERTICAL DATUM : NAVD 88
CITY OF RENTON BENCH MARK # RENT 2094
TOP OF NAIL IN CONCRETE MONUMENT IN CASE AT INTERSECTION OF SE 89TH PLACE AND 133RD AVE, SE ELEVATION=346.43 FEET

BASIS OF BEARINGS

S88°47'51"E ALONG CENTERLINE OF SE89TH PLACE



LEGEND

	INTERIM SEDIMENTATION PROTECTION PER DETAIL, SHEET C05
	ROCK CHECK DAM PER DETAIL, SHEET C05
	TEMPORARY ROCKED CONSTRUCTION ENTRANCE PER DETAIL, SHEET C05
	INTERCEPTOR SWALE PER DETAIL, SHEET C05
	SILT FENCE PER DETAIL, SHEET C06
	12" STORM
	LIMITS OF DISTURBANCE
	PROPOSED CONTOURS
	EXISTING CONTOURS
	DECIDUOUS
	EVERGREEN
	EXISTING SIGNIFICANT TREES TO BE REMOVED
	EXISTING SIGNIFICANT TREES TO BE SAVED
	EXISTING SIGNIFICANT SAVED TREES TO BE CREDITED AS TWO TREES FOR SIZE (24" DIA FOR EVERGREENS AND 30" DIA FOR BROADLEAF TREES)

TREE RETENTION DATA

EXISTING SIGNIFICANT TREES ON SITE		60 TREES
TOTAL EXISTING SIGNIFICANT TREES DIAMETER		1248"
AVERAGE EXISTING SIGNIFICANT TREES DIAMETER	1248/60=	20.8"
EXISTING SIGNIFICANT TREES INSIDE OF SENSITIVE AREA		3 TREES
EXISTING SIGNIFICANT TREES OUTSIDE OF SENSITIVE AREA	60-3 =	57
TOTAL TREES REQUIRED TO BE SAVED (25% OF TOTAL TREES OUTSIDE OF SENSITIVE)	57 * 0.25=	14 TREES
TREES PROPOSED TO BE SAVED		15 TREES
SIGNIFICANT TREE CREDIT EARNED		8 TREES
PROPOSED NUMBER OF REPLACEMENT TREES		N/A
TREE REPLACEMENT TOTAL		N/A

NOTES:

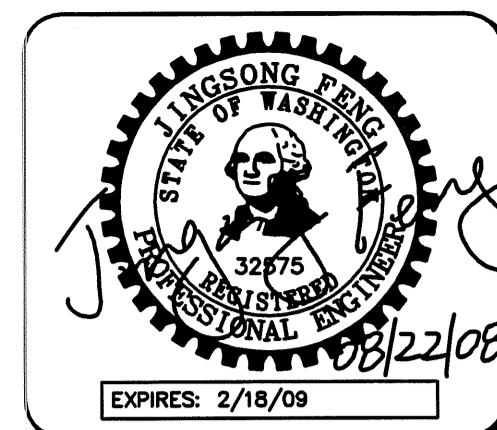
TREE RETENTION CALCULATIONS INCLUDE ADDITIONAL CREDIT FOR SIGNIFICANT TREES IN EXCESS OF 24" (EVERGREENS) AND 30" (DECIDUOUS), OR FOR TREES IN GROUPINGS OF 5 OR MORE WITH CONTINUOUS CANOPY COVERAGE AS REQUIREMENTS ARE MET ON A PERCENT BASIS WITHOUT THE NEED FOR ADDITIONAL CREDIT.

THIS TREE COUNT MAY BE MODIFIED AS A RESULT OF ADDITIONAL REVIEW BY AN ARBORIST TO DETERMINE A REVISED SIGNIFICANT TREE COUNT. MORE TREES MAY BE REMOVED THAN INDICATED IF THE TREES WITH ASSOCIATED DRIP LINES IMPOSE ON POTENTIAL HOUSE SITES.

ANY POTENTIAL DEFICIT IN THE SIGNIFICANT TREE COUNT IS PLANNED TO BE MITIGATED BY THE TREE REPLACEMENT IN APPROPRIATE AVAILABLE AREAS IN ACCORDANCE WITH CITY CODE.

TREE CLEARING AND REMOVAL SPECIFICATIONS PER CITY/ARBORIST RECOMMENDATIONS SHALL BE INCLUDED IN FINAL CONSTRUCTION PLANS.

ANY SIGNIFICANT TREES DESTROYED DURING GRADING SHALL BE REPLACED AT A RATIO REQUIRED BY NMC 18.16.170



15445 53RD AVE. S.
SEATTLE, WA 98188
PHONE: (206) 431-7970
FAX: (206) 388-1648
WEB SITE: PACENG.COM

Pacific Engineering Design, LLC
Civil Engineering and Planning Consultants

VARNEY SUBDIVISION
CITY OF NEWCASTLE

FOR: GREACEN HOMES, LLC
1140 140TH AVE NE, SITE D
BELLEVUE, WA 98005
PHONE: (425) 746-6440 FAX: (425) 766-2303

PROJECT NO.: **06015**
DRAWN BY: **JGC**
ISSUE DATE: **02-01-08**
SHEET REV.: **08-22-08**

TEMPORARY EROSION/ SEDIMENTATION CONTROL PLAN

CD\06015TE01-C04.DWG
C04