

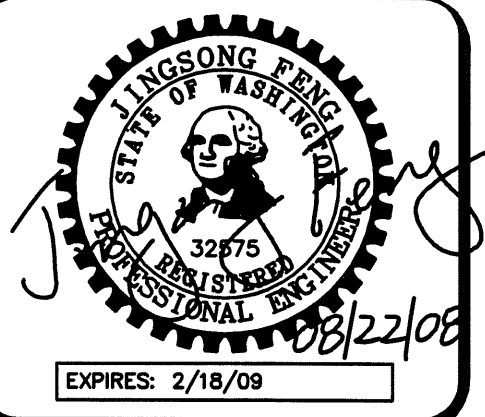
REVISIONS:

NW 1/4 OF SW 1/4 OF SEC. 34, T. 24 N., R. 05 E., W.M.

APPROVED FOR CONSTRUCTION

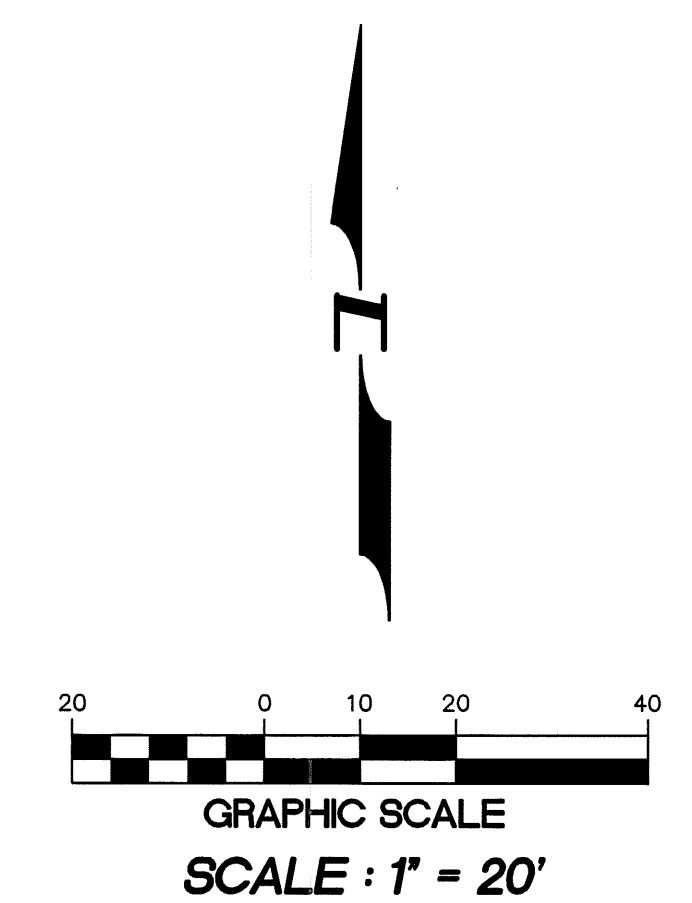
BY: _____ DATE: _____
CITY OF NEWCASTLE

THESE DRAWINGS ARE APPROVED FOR CONSTRUCTION FOR A PERIOD OF 12 MONTHS FROM THE DATE SHOWN HEREON. THE CITY RESERVES THE RIGHT TO MAKE REVISIONS, ADDITIONS, DELETIONS, OR MODIFICATIONS SHOULD CONSTRUCTION BE DELAYED BEYOND THIS TIME LIMITATION. THE CITY, BY APPROVING THESE DRAWINGS, ASSUMES NO LIABILITY IN REGARDS TO THEIR ACCURACY OR OMISSIONS.



15445 53RD AVE. S.
SEATTLE, WA 98188
PHONE: (206) 431-7970
FAX: (206) 388-1648
WEB SITE: PACENG.COM

Pacific Engineering Design, LLC
Civil Engineering and Planning Consultants

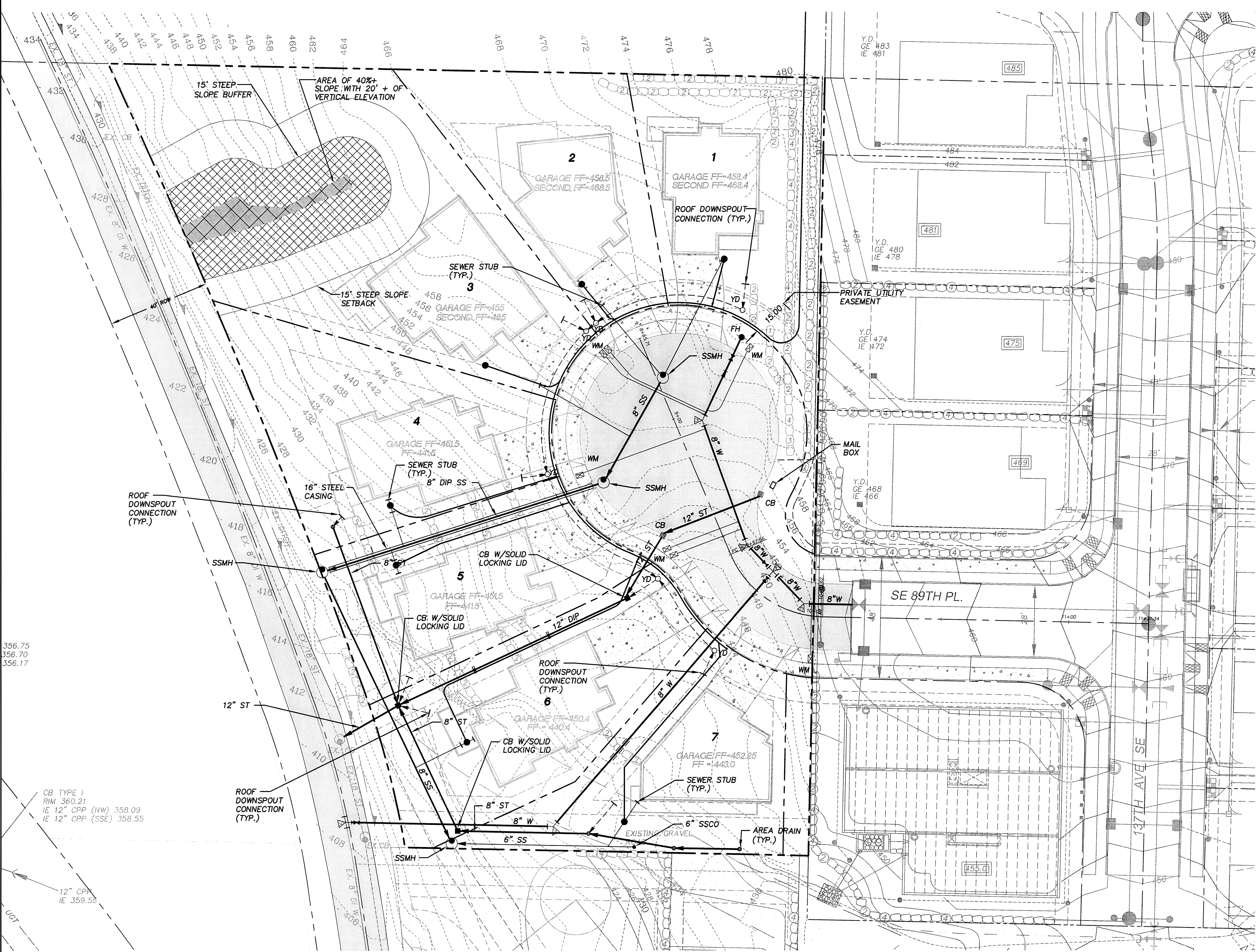


BENCH MARK

VERTICAL DATUM : NAVD 88
CITY OF RENTON BENCH MARK # RENT 2094
TOP OF NAIL IN CONCRETE MONUMENT IN CASE AT INTERSECTION OF SE 89TH PLACE AND 133RD AVE, SE ELEVATION=346.43 FEET

BASIS OF BEARINGS

S88°47'51"E ALONG CENTERLINE OF SE 89TH PLACE



356.75
356.70
356.17

CB TYPE I
RIM 360.21
IE 12" CPP (NW) 358.09
IE 12" CPP (SSE) 358.55

12" CPP
IE 359.58

VARNEY SUBDIVISION
CITY OF NEWCASTLE
FOR: GREACEN HOMES, LLC
PROJECT: 15445 53RD AVE S
PHONE: (206) 431-7970
FAX: (206) 388-1648

PROJECT NO.: **06015**
DRAWN BY: **JQC**
ISSUE DATE: **02-01-08**
SHEET REV.: **08-22-08**

COMPOSITE UTILITY PLAN

CD\06015CU01-003.DWG
C03