

STA: 1+18.60, 63.15 LT
 1-16"x6" TAPPING TEE (FL)
 1-6" GATE VALVES (FL/MJ)
 1-FIRE HYD. ASSY
 1-THRUST BLOCK

PLUG & BLOCK EXIST. VALVE.
 REMOVE VALVE BOX

STA: 1+28.63, 5.00 RT
 REMOVE EXISTING F.H. AND
 DELIVER TO DISTRICT

STA: 6+10.92, 32.72' RT
 1-6"x6" TEE (FL/MJ)
 1-8" GATE VALVE (FL/MJ)
 1-8" ADAPTER (FL/MJ)
 1-THRUST BLOCK

STA: 5+99.99, 33.82' LT
 1-FIRE HYD. ASSY
 PUMPER PORT TO FACE STREET

STA: 6+10.34, 25.98' LT
 1-8" 45° BEND (MJ)
 1-THRUST BLOCK

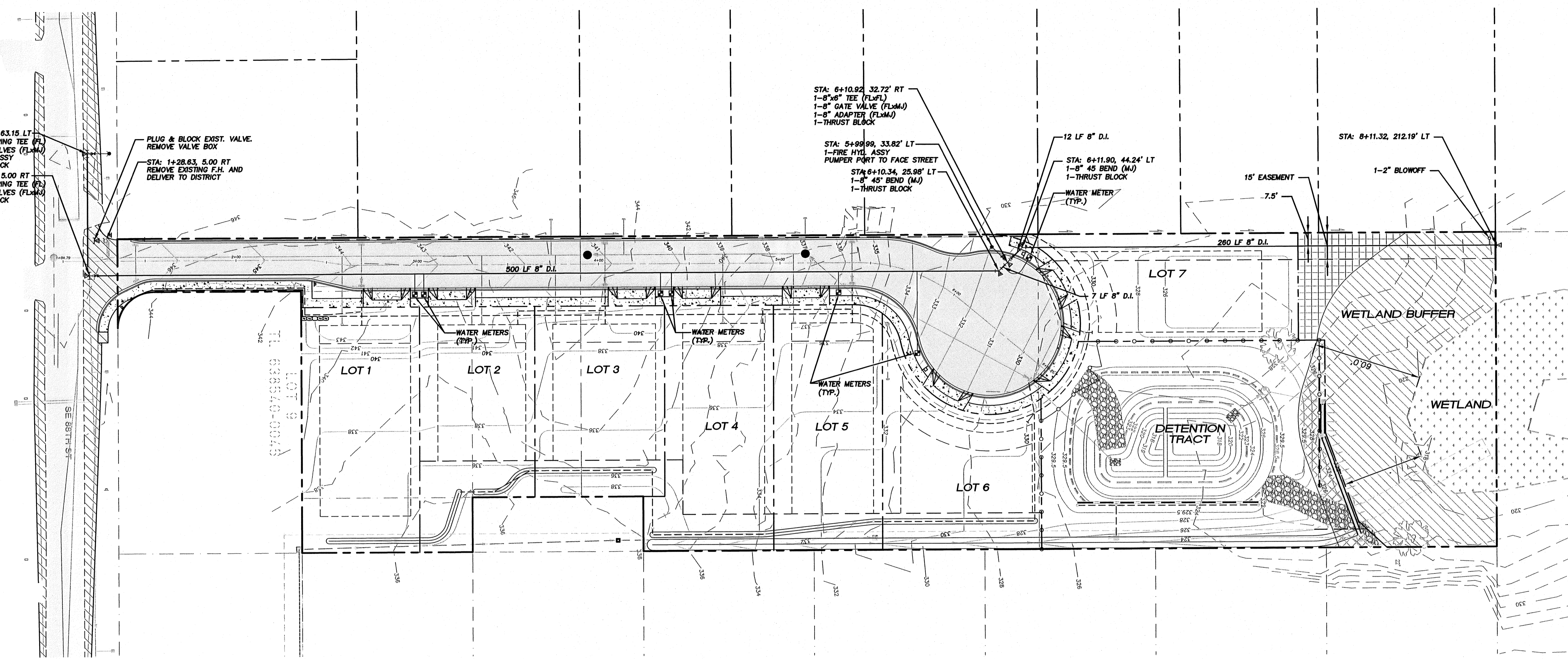
12 LF 8" D.I.
 STA: 6+11.90, 44.24' LT
 1-8" 45° BEND (MJ)
 1-THRUST BLOCK

WATER METER
 (TYP.)

STA: 8+11.32, 212.19' LT

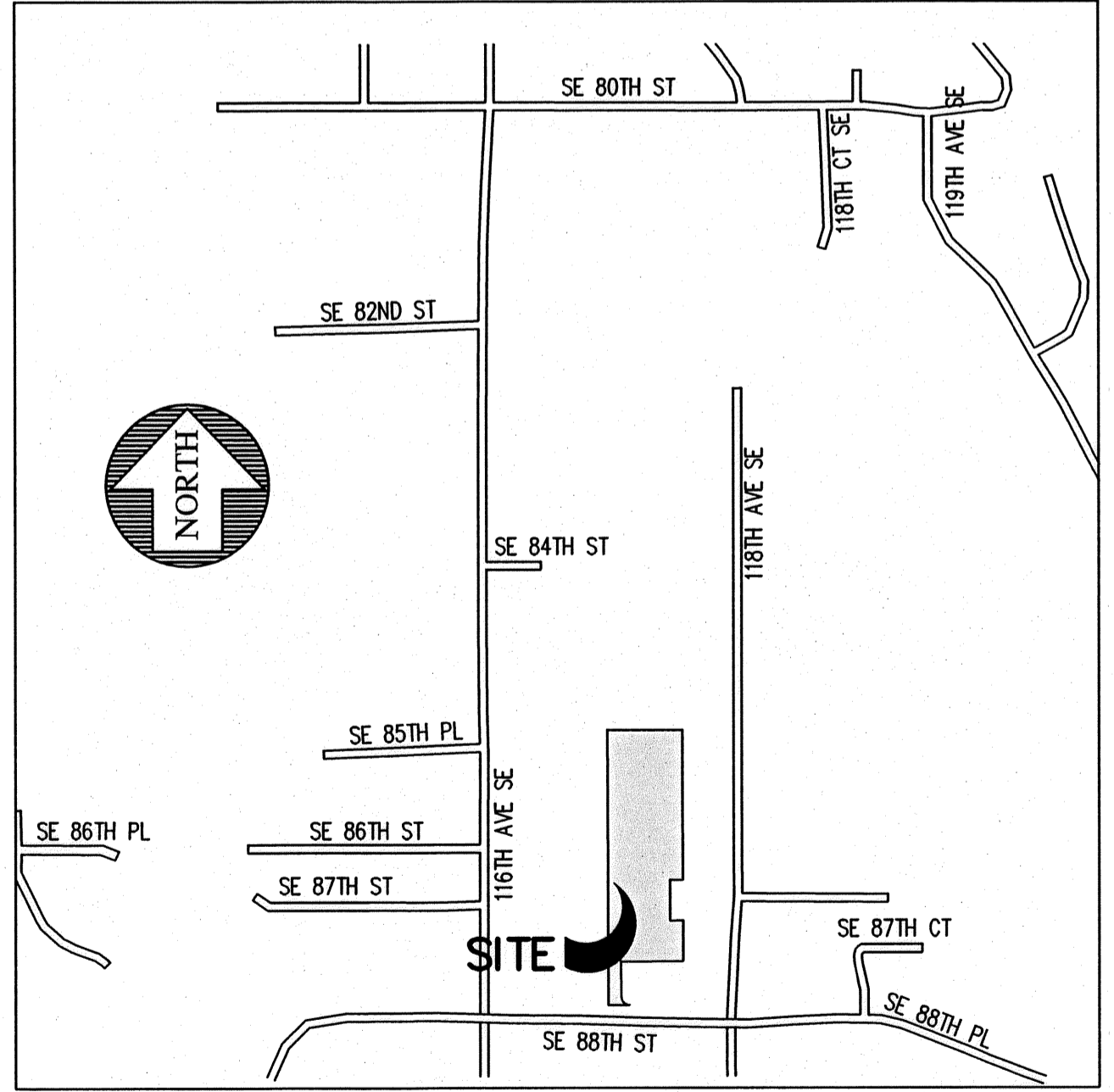
15' EASEMENT

1-2" BLOWOFF



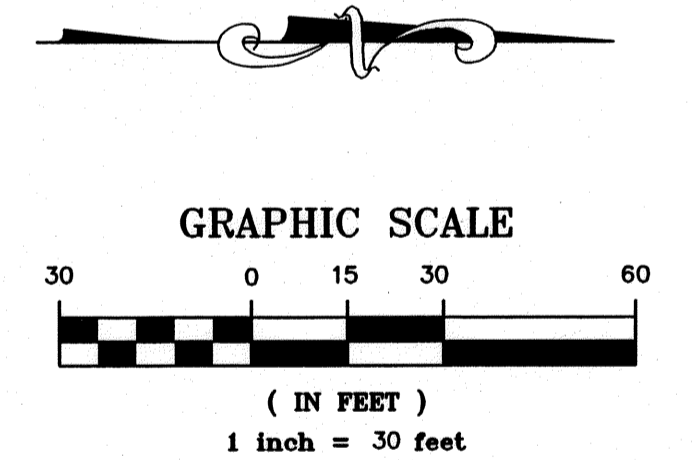
GENERAL NOTES

1. MAXIMUM ALLOWABLE DEFLECTION ON EACH JOINT SHALL NOT EXCEED ONE-HALF THE MANUFACTURER'S RECOMMENDED PERMISSIBLE DEFLECTION.
2. ALL CONSTRUCTION SHALL BE IN ACCORDANCE WITH COAL CREEK UTILITY DISTRICT STANDARD SPECIFICATIONS AND THE CITY OF NEWCASTLE.
3. LOCATIONS OF THE EXISTING UTILITIES SHOWN ARE APPROXIMATE. EXISTING UTILITIES SHALL BE FIELD LOCATED BY REPRESENTATIVE UTILITY COMPANIES PRIOR TO CONSTRUCTION.
4. CONTRACTOR SHALL FIELD VERIFY ALL CONNECTIONS TO EXISTING PIPES FOR PROPER FITTING AND DEPTH.
5. CONTRACTOR SHALL NOTIFY ALL AFFECTED UTILITIES 24 HOURS PRIOR TO CONSTRUCTION.
6. ALL ADAPTERS ARE TO BE DUCTILE IRON FITTINGS.
7. VALVE POST MARKERS ARE TO BE INSTALLED FOR VALVES LOCATED OUT OF ASPHALTED AREAS.
8. "FIELD LOK" GASKETS MAY BE REQUIRED BY DISTRICT ON STEEP SLOPES.



VICINITY MAP
 N.T.S.

BASIS OF BEARING
 THE MONUMENTED CENTERLINE OF 116TH AVE SE AT BEARING OF S00°10'00"E



Approved By:
 Coal Creek Utility District
 Date _____

CALL BEFORE YOU DIG
 Call: TOLL FREE
 1-800-424-5555



FILE NAME (UPDATED BY) PROJECT DATE & TIME

DESIGNED	REVISED PER DISTRICT COMMENTS	6/8/07	TLR/C.B.	DGS
DRAWN	REVISED PER DISTRICT COMMENTS	6/27/08	BCS	DGS
CHECKED	SYN	REVISION	DATE	BY
				APP'D

Pacific Engineering Design, LLC
 15445 53RD AVE. S. SEATTLE, WA 98188
 PHONE: (206) 431-7970 FAX: (206) 388-1648 WEB SITE: PACENG.COM
 Civil Engineering and Planning Consultants

COAL CREEK UTILITY DISTRICT
 6801 132ND PLACE S.E.
 NEWCASTLE, WASHINGTON 98059

REFERENCE INFORMATION	DATE
FIELD BOOK:	JUNE 27, 2008
SURV. CPU FILE:	SCALE
DATUM: NGVD29	NOTED

LAWRENCE PARK WATER EXTENSION PLAN

JOB NUMBER	07025.00
DWG NO.	0519WACV01-1.DWG
SHEET	1 OF 3