

**GENERAL NOTES**

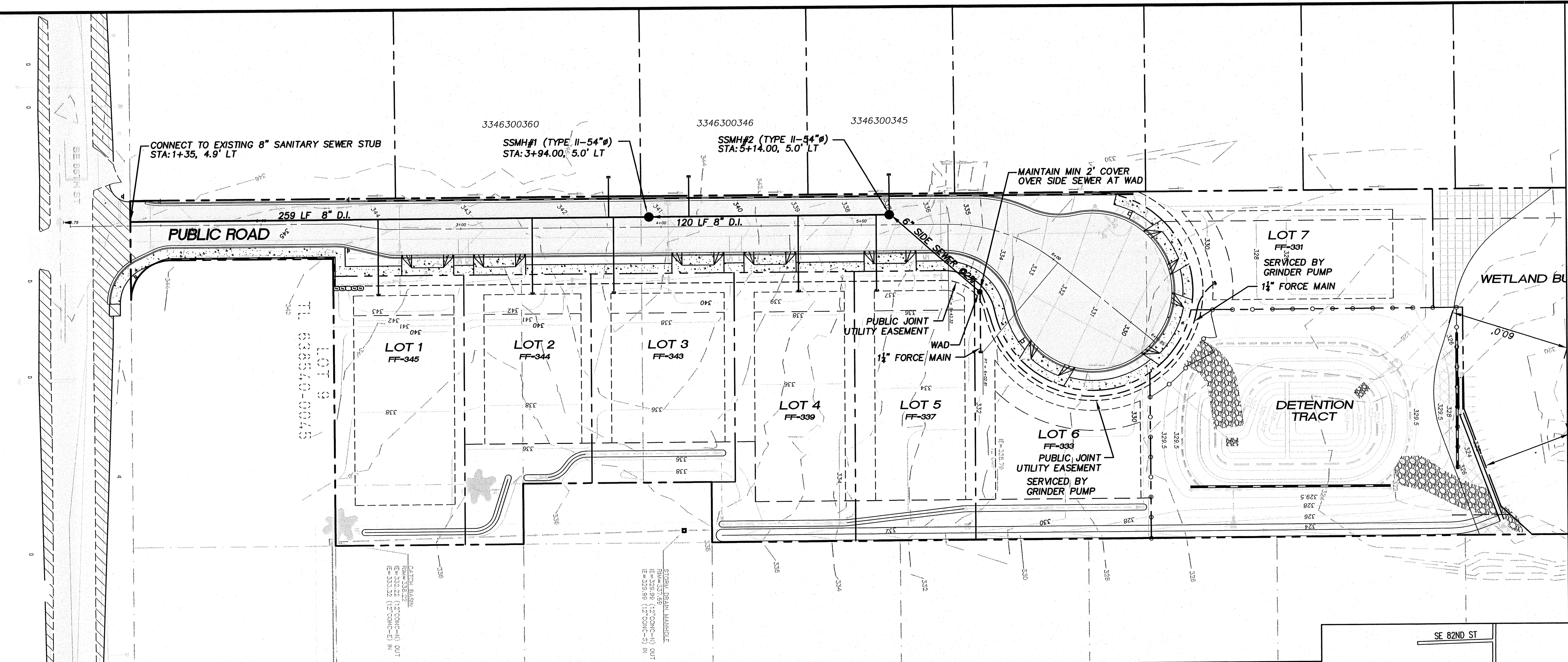
1. CONSTRUCTION SHALL BE IN ACCORDANCE WITH COAL CREEK UTILITY DISTRICT STANDARD SPECIFICATIONS.
2. WHERE THE WATER MAIN CROSSES OVER SANITARY SEWER, THE MINIMUM VERTICAL SEPARATION SHALL BE 18 INCHES, OR CONSTRUCTION SHALL BE IN ACCORDANCE WITH D.O.E. CRITERIA FOR SEWAGE WORKS DESIGN (SEE DETAILS).
3. ALL SIDE SEWER TEES SHALL BE FIELD LOCATED
4. SECURE SIDE SEWER PERMITS FROM DISTRICT PRIOR TO INSTALLING SIDE SEWERS.
5. MANHOLE RING COVERS SHALL BE SLOPED TO MATCH THE GRADE OF THE STREET IN WHICH THEY ARE PLACED.
6. STREETS SHALL BE CONSTRUCTED TO SUBGRADE PRIOR TO INSTALLING THE SANITARY SEWERS.
7. SIDE SEWERS TO BE EXTENDED 10 FEET INTO THE LOTS.

**VICINITY MAP**

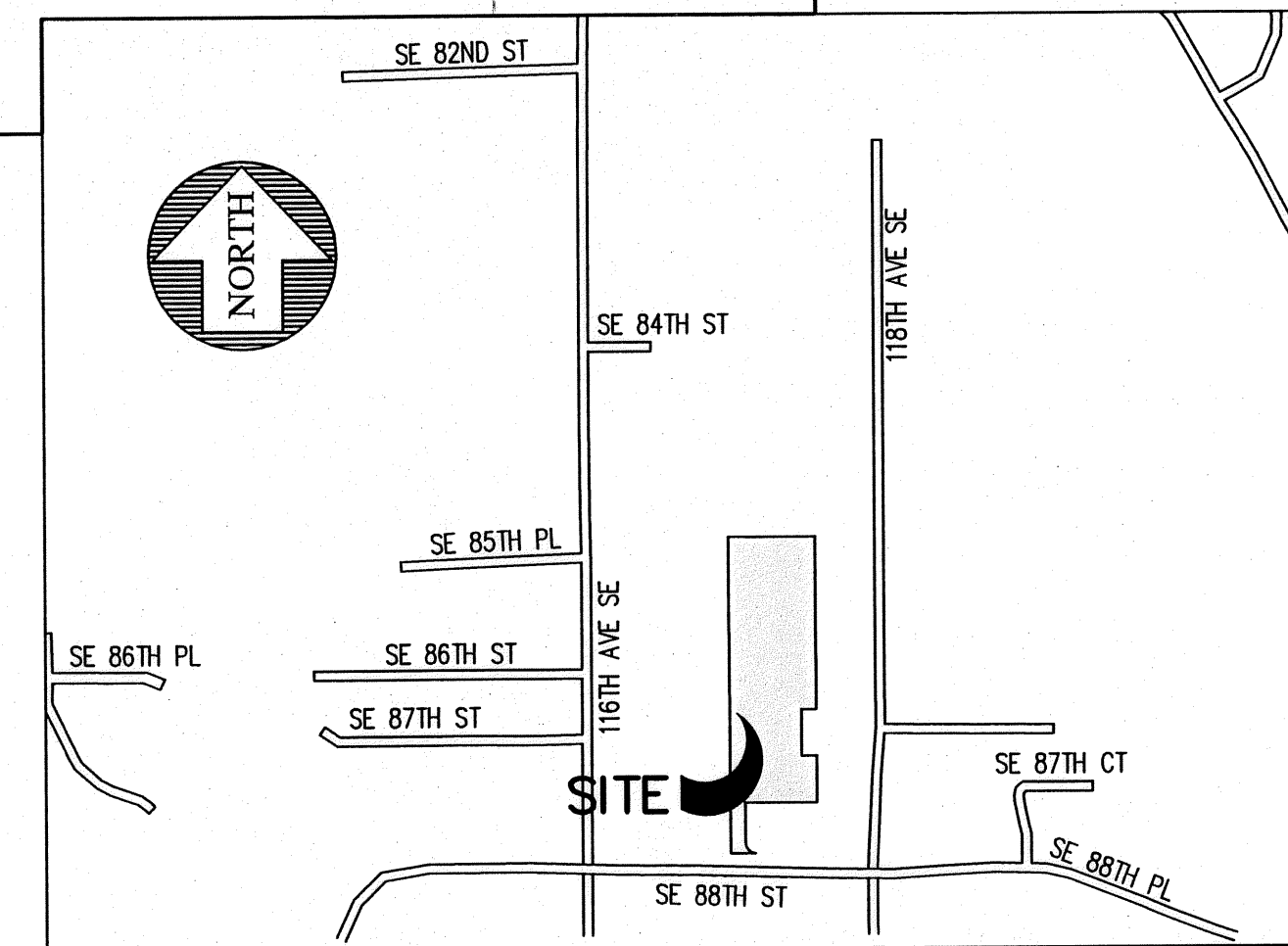
N.T.S.

**BASIS OF BEARING**

THE MONUMENTED CENTERLINE OF 116TH AVE SE AT BEARING OF 500°10'00"E



SCALE 1" = 30' H  
SCALE 1" = 10' V



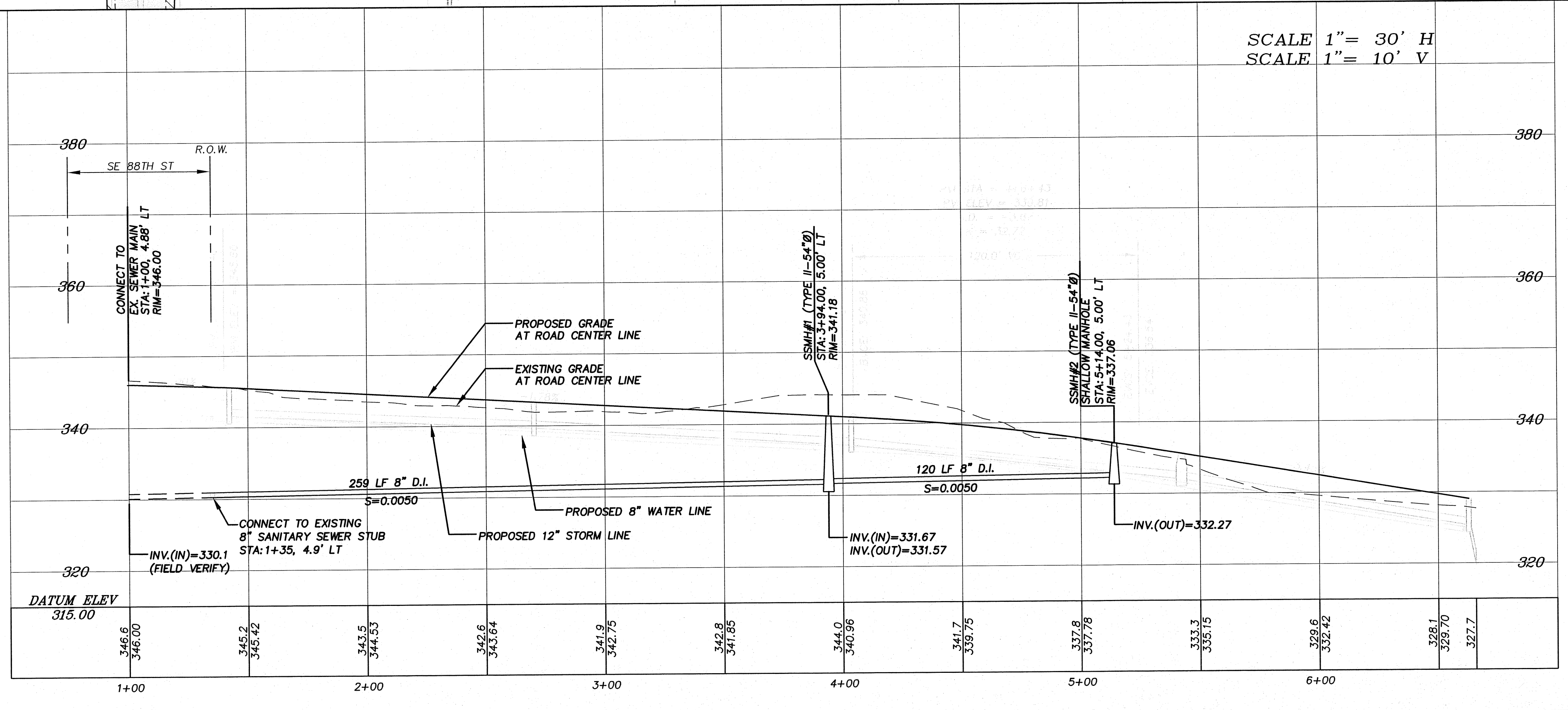
**SHEET INDEX**

P01	COVER SHEET/SANITARY SEWER PLAN AND PROFILE
P02	STANDARD NOTES
P03	STANDARD DETAILS

**Approved By:**  
**Coal Creek Utility District**  
Date \_\_\_\_\_

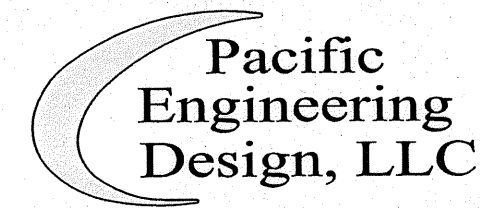
 CALL BEFORE YOU DIG  
Call: TOLL FREE  
1-800-424-5555


  
LAWRENCE PARK  
REGISTERED PROFESSIONAL ENGINEER  
18612  
EXPIRES: MAY 6, 2009



FILE NAME (UPDATED BY) PLOT DATE & TIME

DESIGNED	REVISED PER DISTRICT COMMENTS	6/8/07	TJR	DGS
DRAWN	REVISED PER DISTRICT COMMENTS	6/27/08	BCS	DGS
CHECKED				
	SYN	REVISION	DATE	BY
				APP'D

 **Pacific Engineering Design, LLC**  
15445 53RD AVE. S. SEATTLE, WA 98188  
PHONE: (206) 431-7970 FAX: (206) 368-1648 WEB SITE: PACENG.COM  
Civil Engineering and Planning Consultants

 **COAL CREEK UTILITY DISTRICT**  
6801 132ND PLACE S.E.  
NEWCASTLE, WASHINGTON 98059

REFERENCE INFORMATION	DATE
FIELD BOOK:	JUNE 27, 2008
SURV. CPU FILE:	SCALE
DATUM: NAD83	NOTED

**LAWRENCE PARK**  
**COVER SHEET/SANITARY SEWER**  
**PLAN AND PROFILE**

JOB NUMBER	<b>07026.00</b>
DWG NO. 051195SCV01-pl.DWG	
SHEET	<b>1</b> OF <b>3</b>