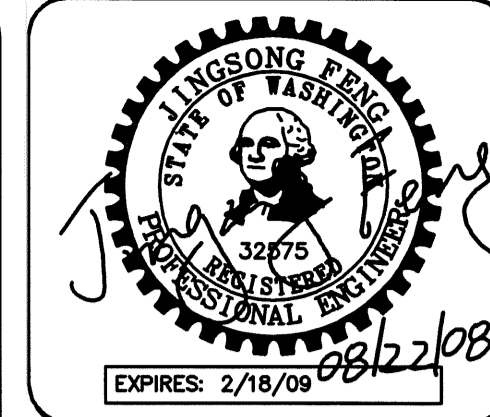


PORTION OF THE SW 1/4 OF THE NW 1/4 OF SEC. 33, TWN. 24N., RGE. 5E., W.M.  
MATCHLINE SEE LOWER LEFT

APPROVED FOR CONSTRUCTION

BY: \_\_\_\_\_ DATE: \_\_\_\_\_  
CITY OF NEWCASTLE

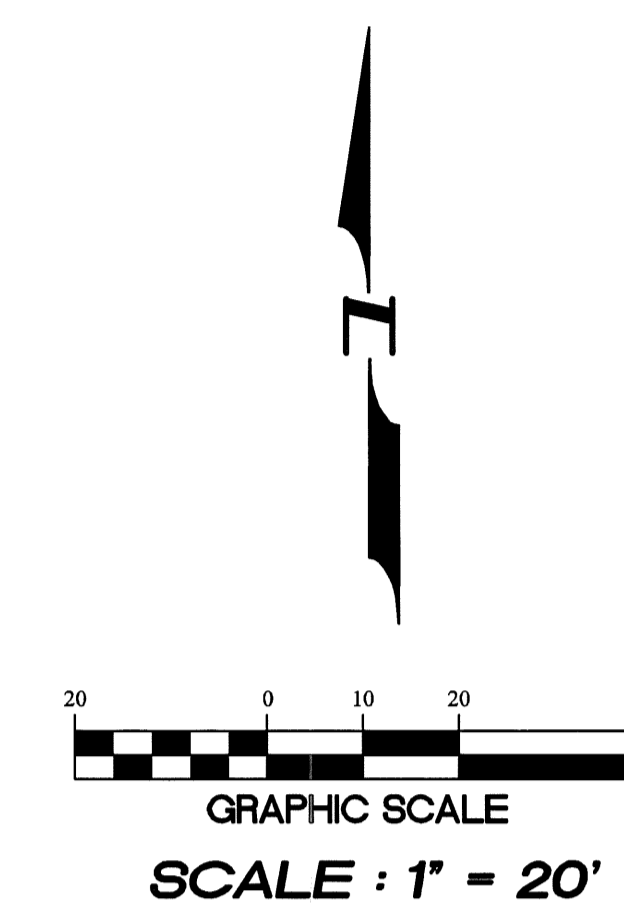
THESE DRAWINGS ARE APPROVED FOR CONSTRUCTION FOR A PERIOD OF 12 MONTHS FROM THE DATE SHOWN HEREON. THE CITY RESERVES THE RIGHT TO MAKE REVISIONS, ADDITIONS, DELETIONS, OR MODIFICATIONS SHOULD CONSTRUCTION BE DELAYED BEYOND THIS TIME LIMITATION. THE CITY, BY APPROVING THESE DRAWINGS, ASSUMES NO LIABILITY IN REGARDS TO THEIR ACCURACY OR OMISSIONS.



15445 53RD AVE S  
SEATTLE, WA 98188  
PHONE: (206) 431-7970  
FAX: (206) 388-1648  
WEB SITE: PACENG.COM

Pacific  
Engineering  
Design, LLC

Civil Engineering and  
Planning Consultants



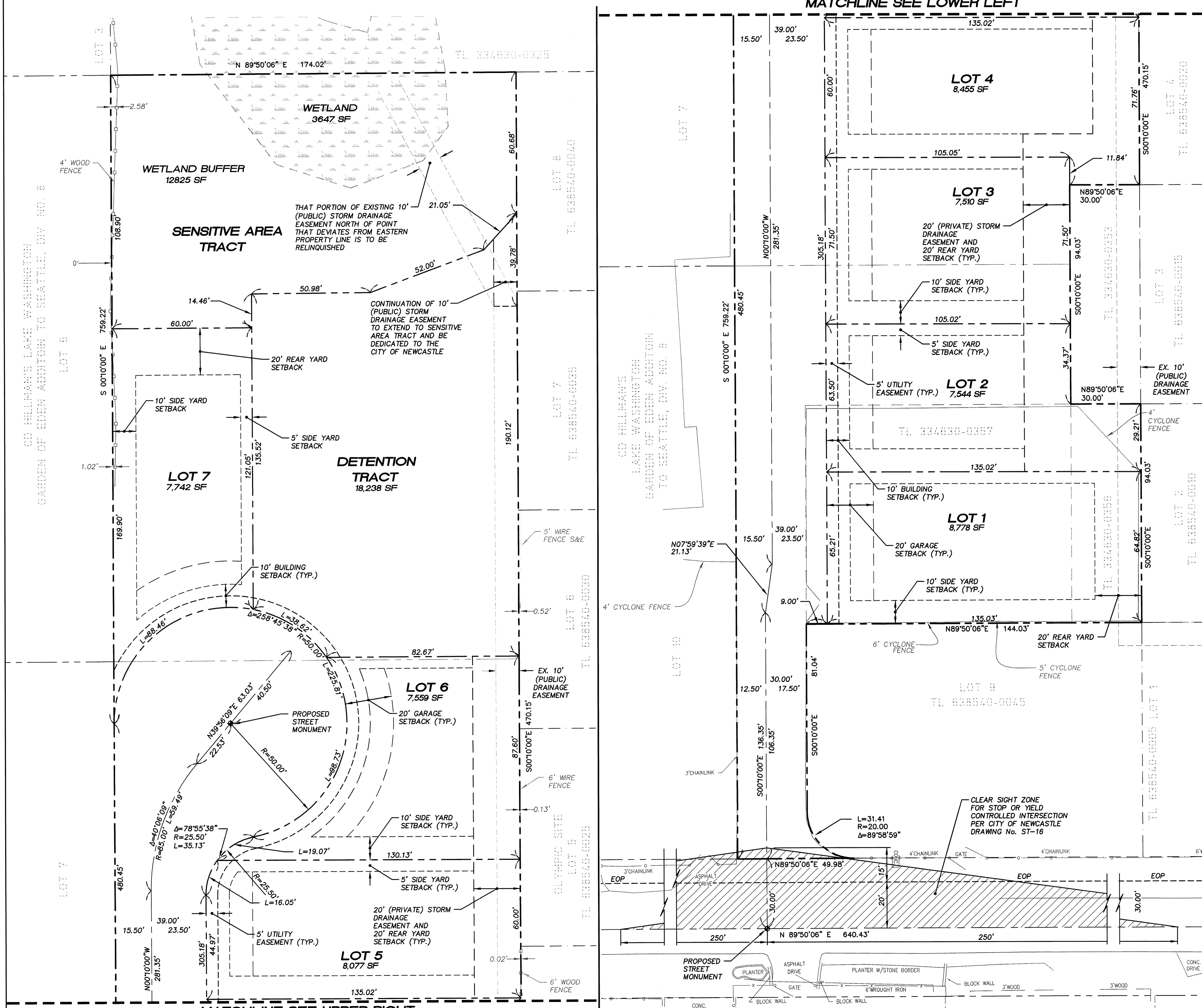
**BASIS OF BEARING :**

THE MONUMENTED CENTERLINE OF 116TH AVE SE AT BEARING OF S00°10'00"E

**BENCH MARK :**

VERTICAL DATUM : CITY OF RENTON - NAVD88

CITY OF RENTON No. 1893  
CONCRETE MONUMENT WITH BRASS DISK, SET 1.5' BELOW THE TOP OF AN IRON MONUMENT CASE AT THE INTERSECTION OF SE 80TH STREET AND 116TH AVENUE SE SET IN THE CENTER OF THE INTERSECTION.  
ELEVATION = 321.279 FEET



LAWRENCE PARK  
CITY OF NEWCASTLE

PROJECT NO.: 05119  
DRAWN BY: JQC  
ISSUE DATE: 05-23-08  
SHEET REV.: 08-22-08

HORIZONTAL  
CONTROL PLAN

05119CD01-C07.DWG  
**C16**