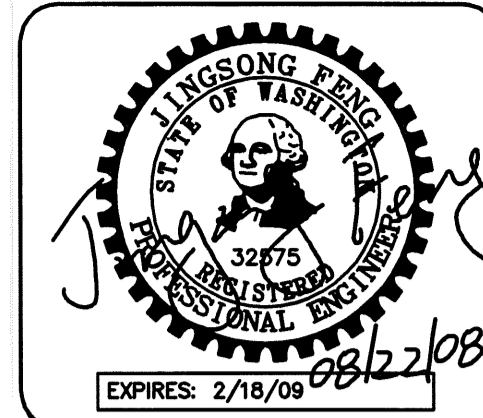


PORTION OF THE SW 1/4 OF THE NW 1/4 OF SEC. 33, TWN. 24N., RGE. 5E., W.M.

APPROVED FOR CONSTRUCTION

BY: _____ DATE: _____
CITY OF NEWCASTLE

THESE DRAWINGS ARE APPROVED FOR CONSTRUCTION FOR A PERIOD OF 12 MONTHS FROM THE DATE SHOWN HEREON. THE CITY RESERVES THE RIGHT TO MAKE REVISIONS, ADDITIONS, DELETIONS, OR MODIFICATIONS SHOULD CONSTRUCTION BE DELAYED BEYOND THIS TIME LIMITATION. THE CITY, BY APPROVING THESE DRAWINGS, ASSUMES NO LIABILITY IN REGARDS TO THEIR ACCURACY OR OMISSIONS.



15445 53RD AVE. S.
SEATTLE, WA 98188
PHONE: (206) 431-7970
FAX: (206) 388-1648
WEB SITE: PACENG.COM

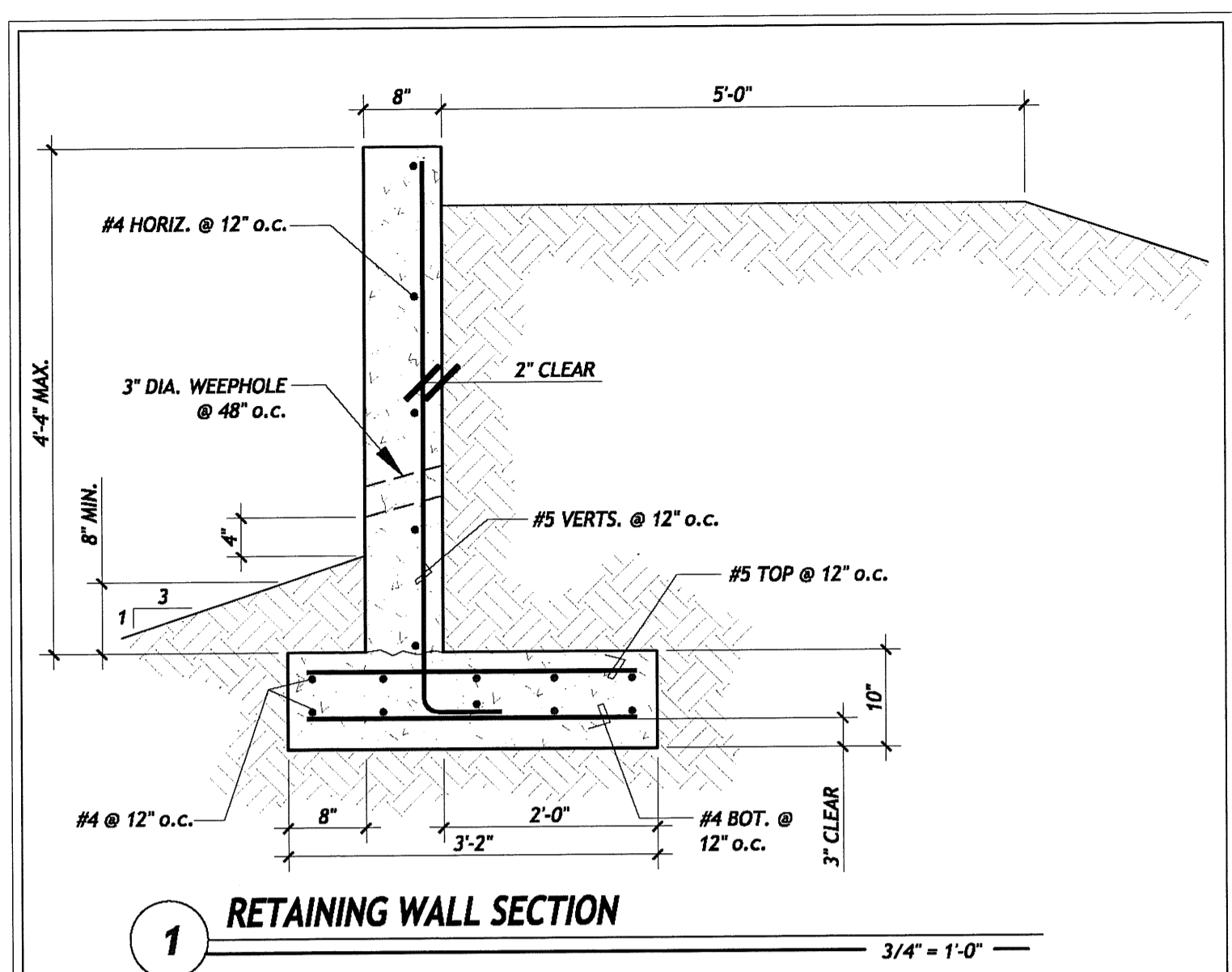
Pacific Engineering Design, LLC
Civil Engineering and Planning Consultants

LAWRENCE PARK
CITY OF NEWCASTLE
FOR: MR. SCOTT CAMERON
1215 120TH AVE NE SUITE 110
BELLEVUE, WA 98005
PHONE: (425) 453-9995

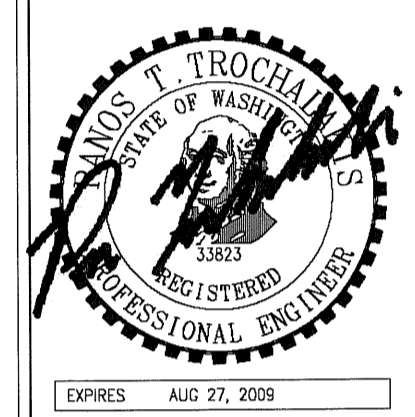
PROJECT NO.: 05119
DRAWN BY: RRJ
ISSUE DATE: 04-01-08
SHEET REV.: 08-22-08

DETENTION/WETPOND PLAN AND SECTIONS

05119DTC05-C13.DWG
C13



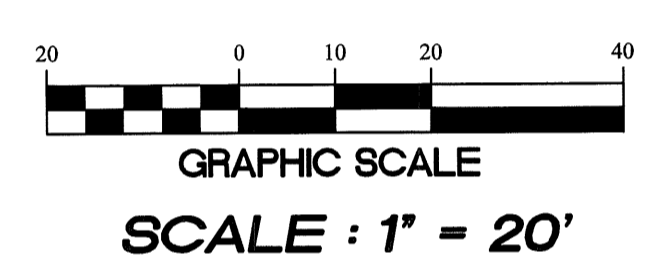
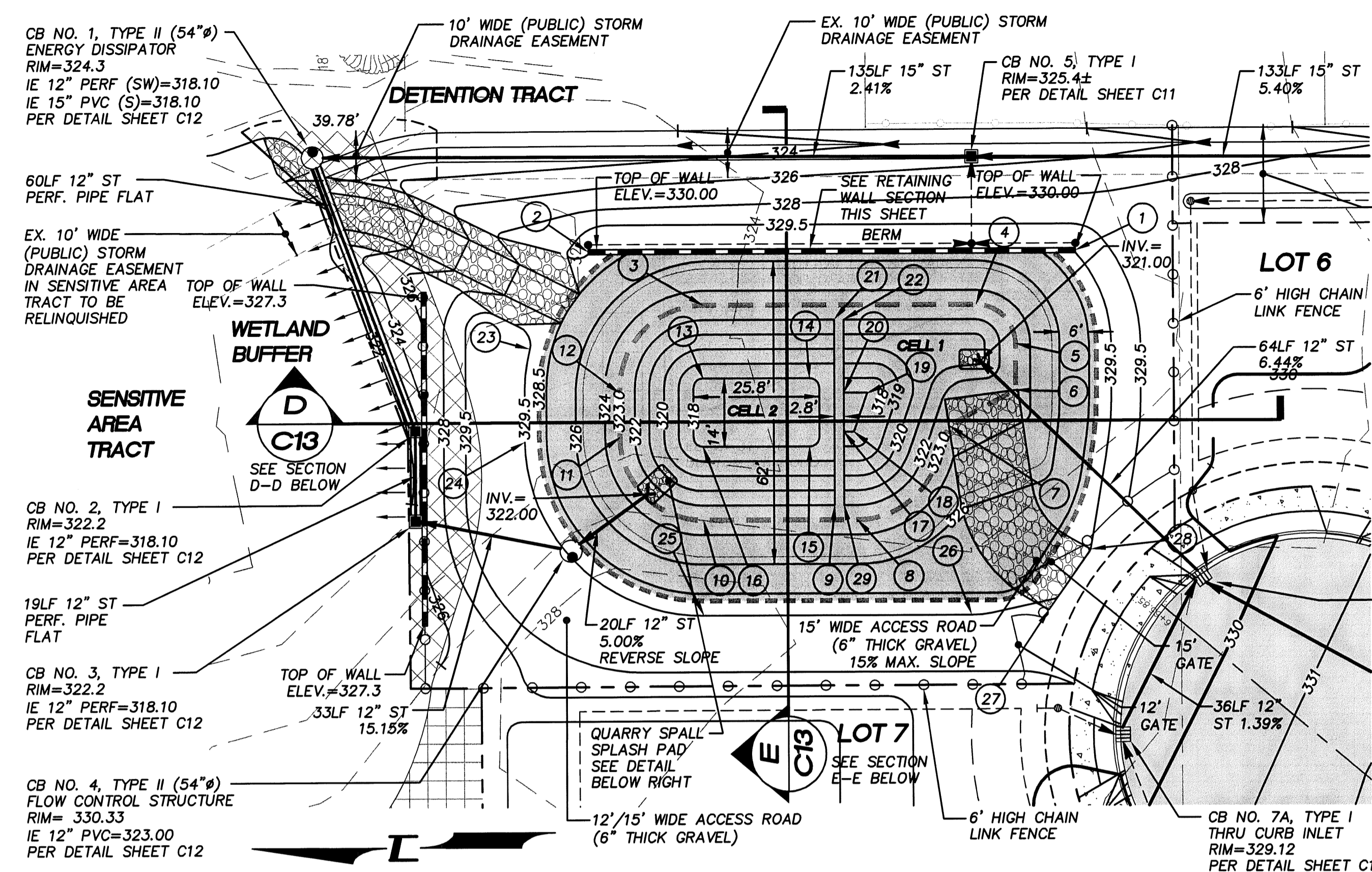
- NOTES:
1. CONCRETE STRENGTH $f_c = 3000$ psi. MAXIMUM WATER/CEMENTITIOUS RATIO = 0.50.
 2. PROVIDE 2'-0" LAP SPLICES FOR #4 REINFORCING BARS AND 2'-6" FOR #5 REINFORCING BARS.
 3. WALL DESIGN CRITERIA PER GEOTECHNICAL REPORT:
ALLOWABLE BEARING = 2,500 PSF
COEFF. FRICTION = 0.50
PASSIVE PRESSURE = 350 PCF
ACTIVE PRESSURE = 35 PCF
SOIL UNIT WEIGHT = 135 PCF



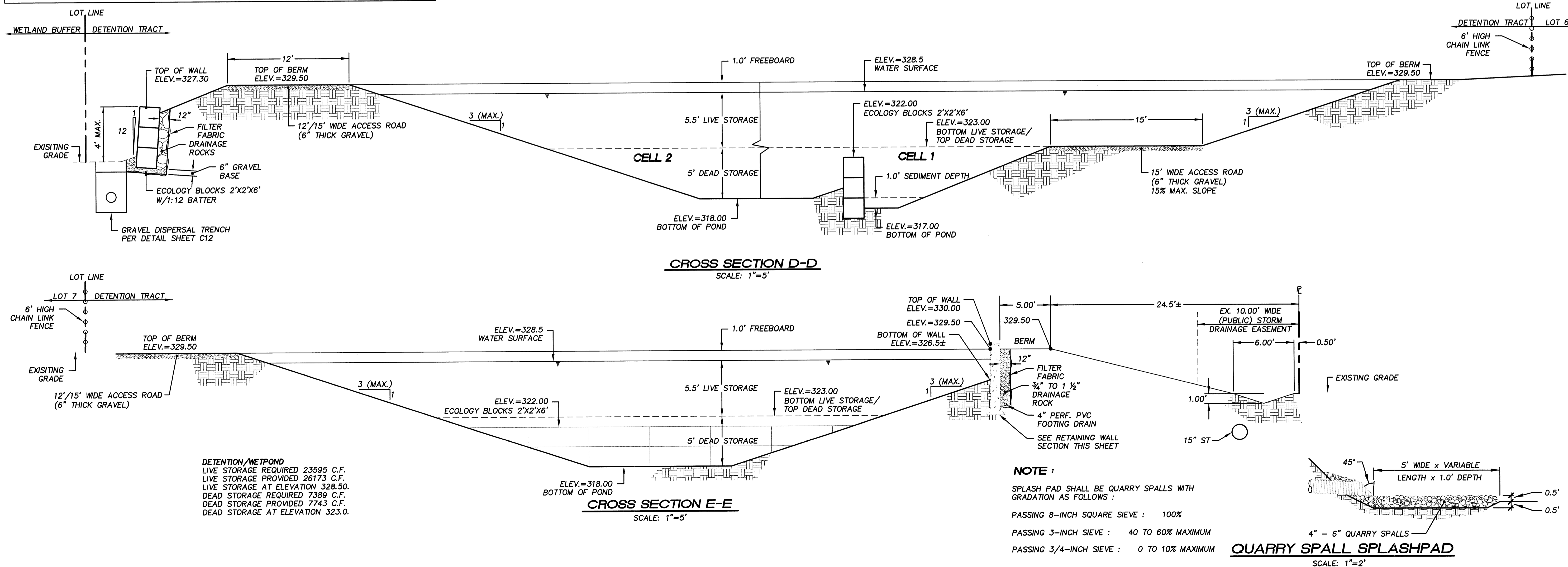
Yu & Trochalakis, PLLC
Structural Engineers
12011 NE 1st. St. Ste #306
Bellevue, WA 98005
Phone: 425-451-9049
Fax: 425-451-8532
http://www.YTEngineers.com

PROJECT: LAWRENCE PARK
PROJECT NUMBER: 08030
SHEET TITLE: DETENTION POND RETAINING WALL
ISSUE DATE: 6-24-08
PROJECT MANAGER: PTT

SCALE: 3/4" = 1'-0"



- | | |
|------------------------------------|------------------------------------|
| 1 N 196595.2657
E 1306311.6216 | 16 N 196671.5237
E 1306271.6216 |
| 2 N 196694.8944
E 1306311.6216 | 17 N 196642.7069
E 1306274.6216 |
| 3 N 196671.5237
E 1306300.6216 | 18 N 196640.7238
E 1306274.6216 |
| 4 N 196615.6543
E 1306300.6216 | 19 N 196637.9717
E 1306282.6216 |
| 5 N 196607.6543
E 1306292.6216 | 20 N 196642.7069
E 1306282.6216 |
| 6 N 196607.6543
E 1306283.0272 | 21 N 196644.7069
E 1306297.6216 |
| 7 N 196621.2812
E 1306275.8257 | 22 N 196642.7069
E 1306297.6216 |
| 8 N 196640.0103
E 1306256.6216 | 23 N 196706.8787
E 1306291.8175 |
| 9 N 196644.7069
E 1306259.6216 | 24 N 196708.0145
E 1306272.8026 |
| 10 N 196671.5237
E 1306256.6216 | 25 N 196671.5237
E 1306237.1216 |
| 11 N 196688.5237
E 1306273.6216 | 26 N 196616.7803
E 1306237.1216 |
| 12 N 196688.5237
E 1306283.7906 | 27 N 196600.9943
E 1306238.0840 |
| 13 N 196671.5237
E 1306285.6216 | 28 N 196592.3879
E 1306250.4498 |
| 14 N 196649.7470
E 1306285.6216 | 29 N 196642.7069
E 1306259.6216 |
| 15 N 196649.7470
E 1306271.6216 | |



- NOTE:
- SPLASH PAD SHALL BE QUARRY SPALLS WITH GRADATION AS FOLLOWS:
 - PASSING 8-INCH SQUARE SIEVE: 100%
 - PASSING 3-INCH SIEVE: 40 TO 60% MAXIMUM
 - PASSING 3/4-INCH SIEVE: 0 TO 10% MAXIMUM

QUARRY SPALL SPLASHPAD
SCALE: 1" = 2'

DETENTION/WETPOND
LIVE STORAGE REQUIRED 23595 C.F.
LIVE STORAGE PROVIDED 26173 C.F.
LIVE STORAGE AT ELEVATION 328.50
DEAD STORAGE REQUIRED 7389 C.F.
DEAD STORAGE PROVIDED 7743 C.F.
DEAD STORAGE AT ELEVATION 323.0