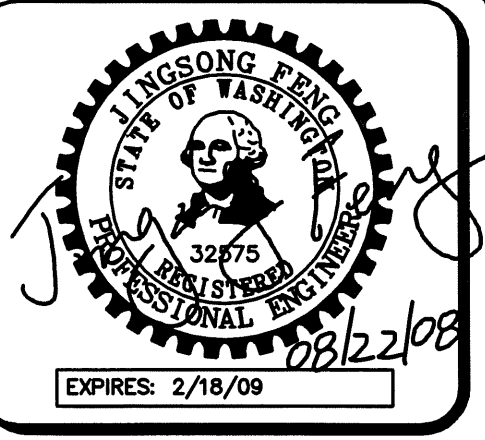


PORTION OF THE SW 1/4 OF THE NW 1/4 OF SEC. 33, TWN. 24N., RGE. 5E., W.M.

APPROVED FOR CONSTRUCTION

BY: _____ DATE: _____
CITY OF NEWCASTLE

THESE DRAWINGS ARE APPROVED FOR CONSTRUCTION FOR A PERIOD OF 12 MONTHS FROM THE DATE SHOWN HEREON. THE CITY RESERVES THE RIGHT TO MAKE REVISIONS, ADDITIONS, DELETIONS, OR MODIFICATIONS SHOULD CONSTRUCTION BE DELAYED BEYOND THIS TIME LIMITATION. THE CITY, BY APPROVING THESE DRAWINGS, ASSUMES NO LIABILITY IN REGARDS TO THEIR ACCURACY OR OMISSIONS.



15445 53RD AVE S
SEATTLE, WA 98188
PHONE: (206) 431-7970
FAX: (206) 388-1648
WEB SITE: PACENG.COM

Pacific Engineering Design, LLC
Civil Engineering and Planning Consultants

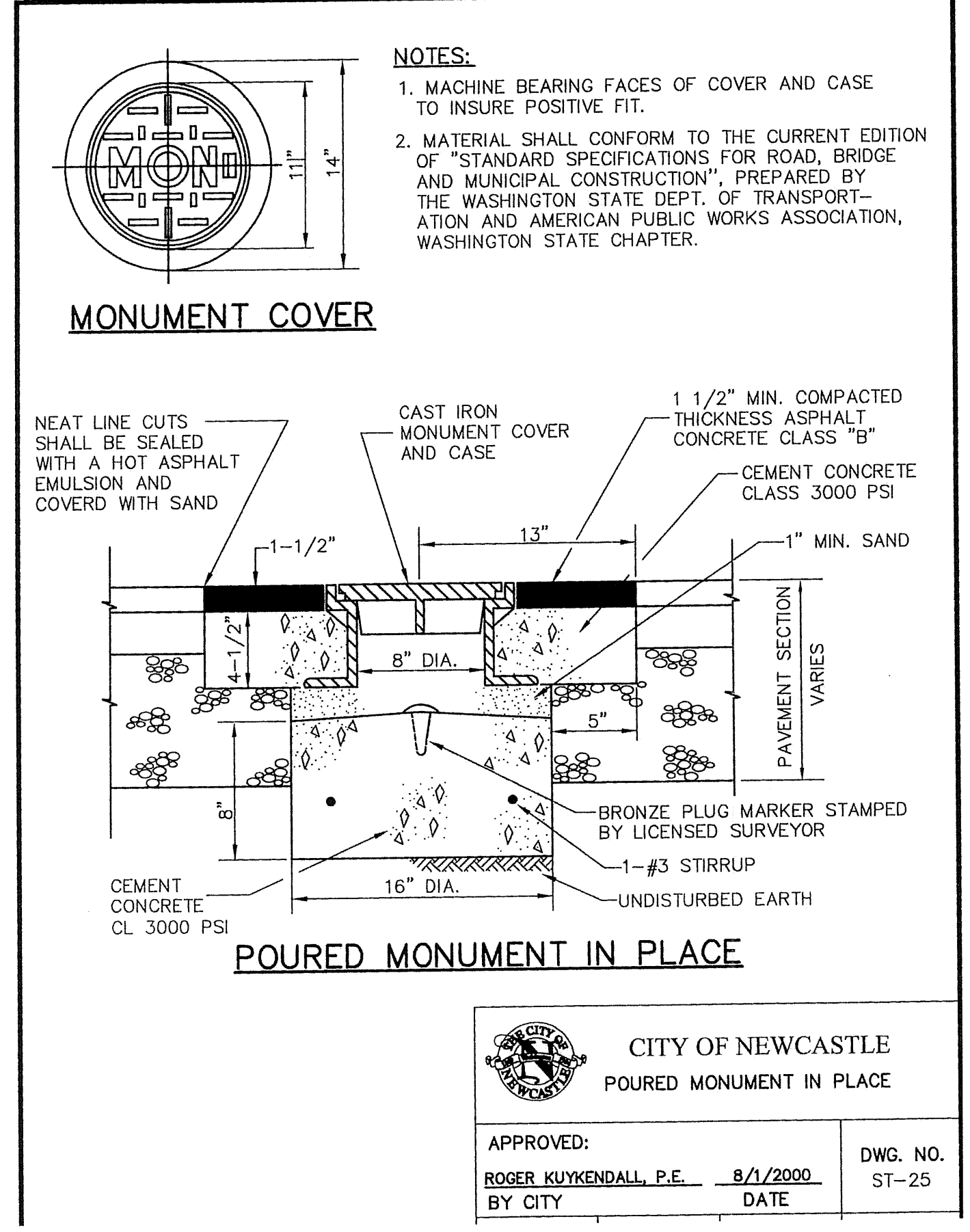
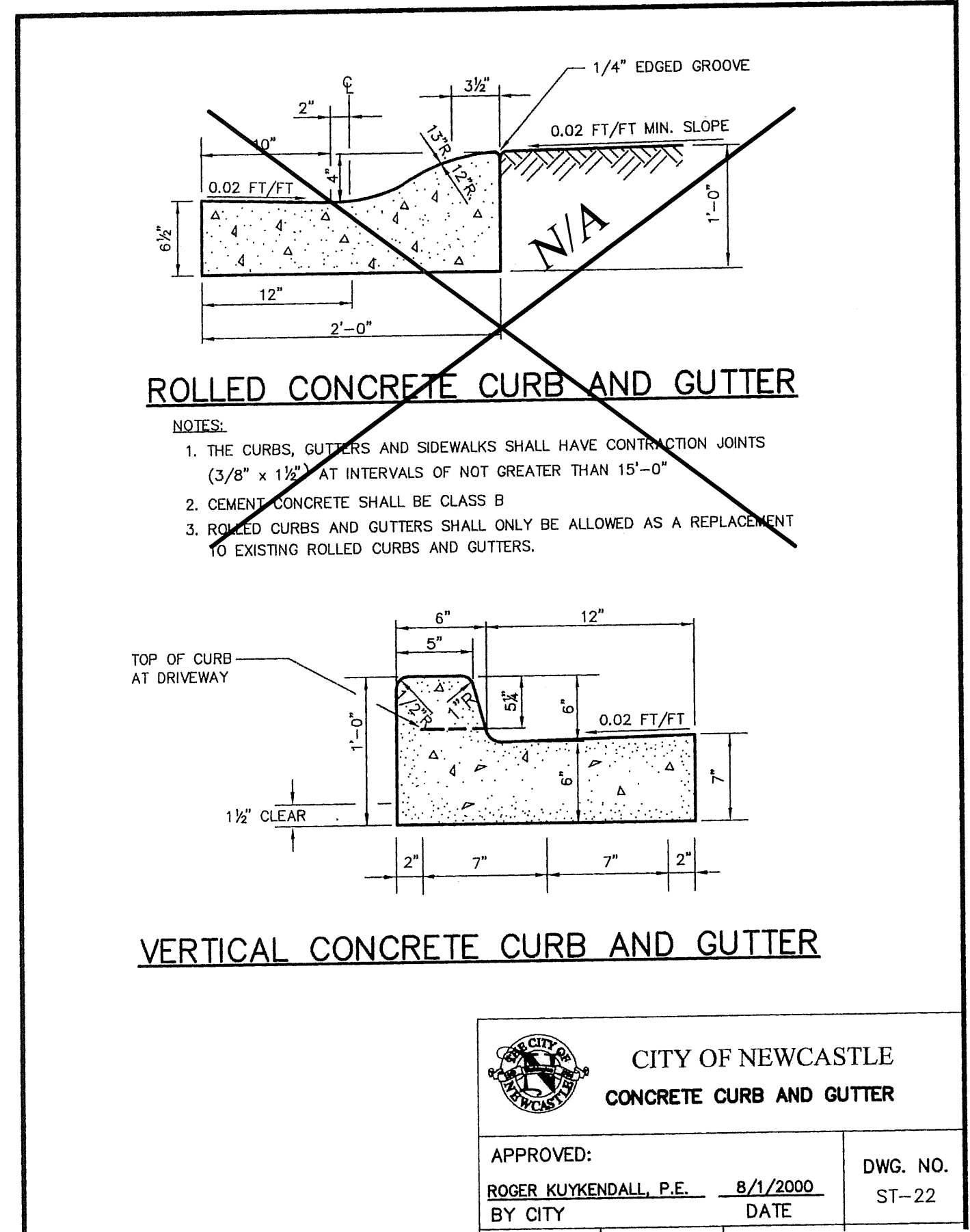
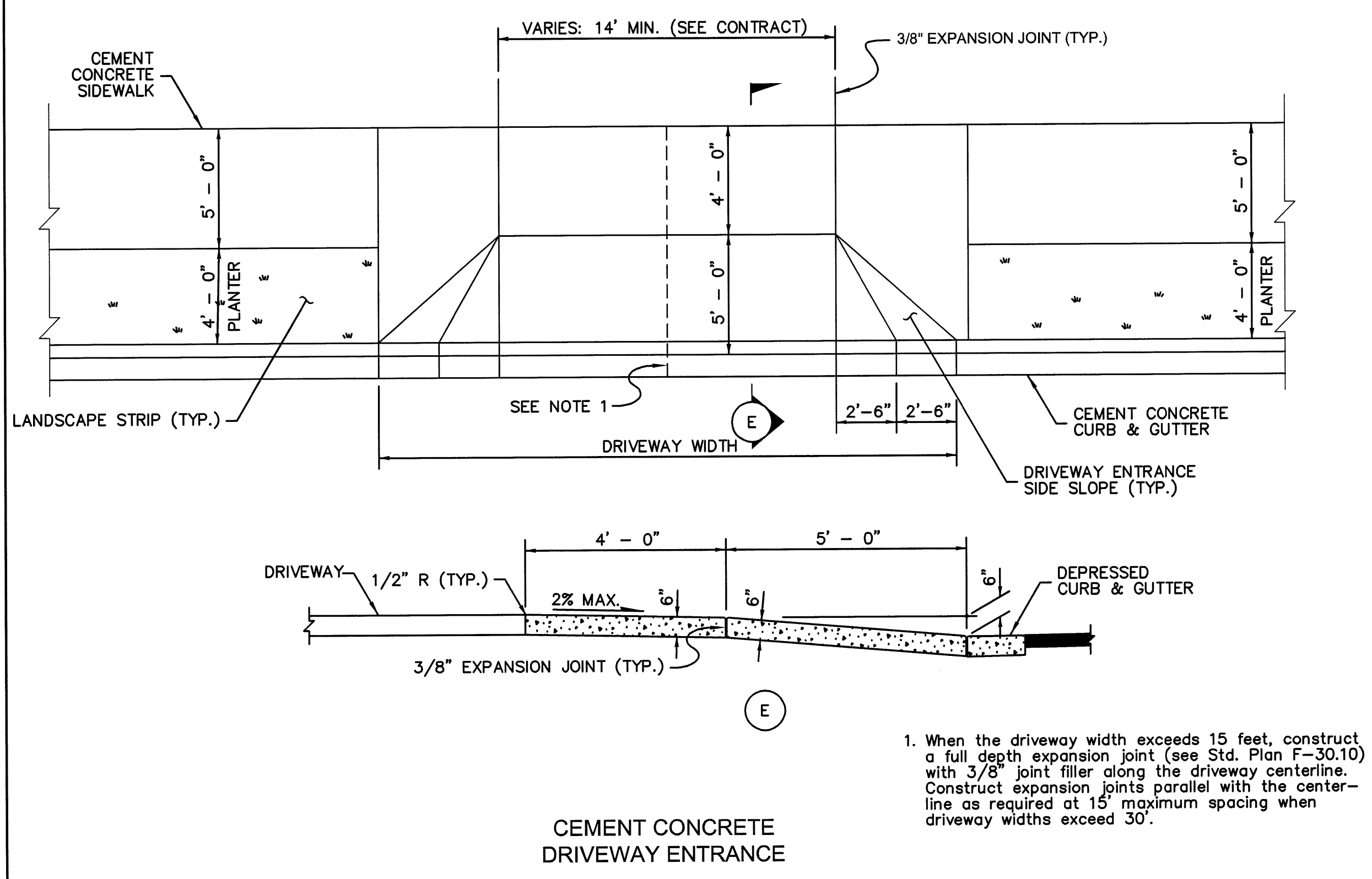
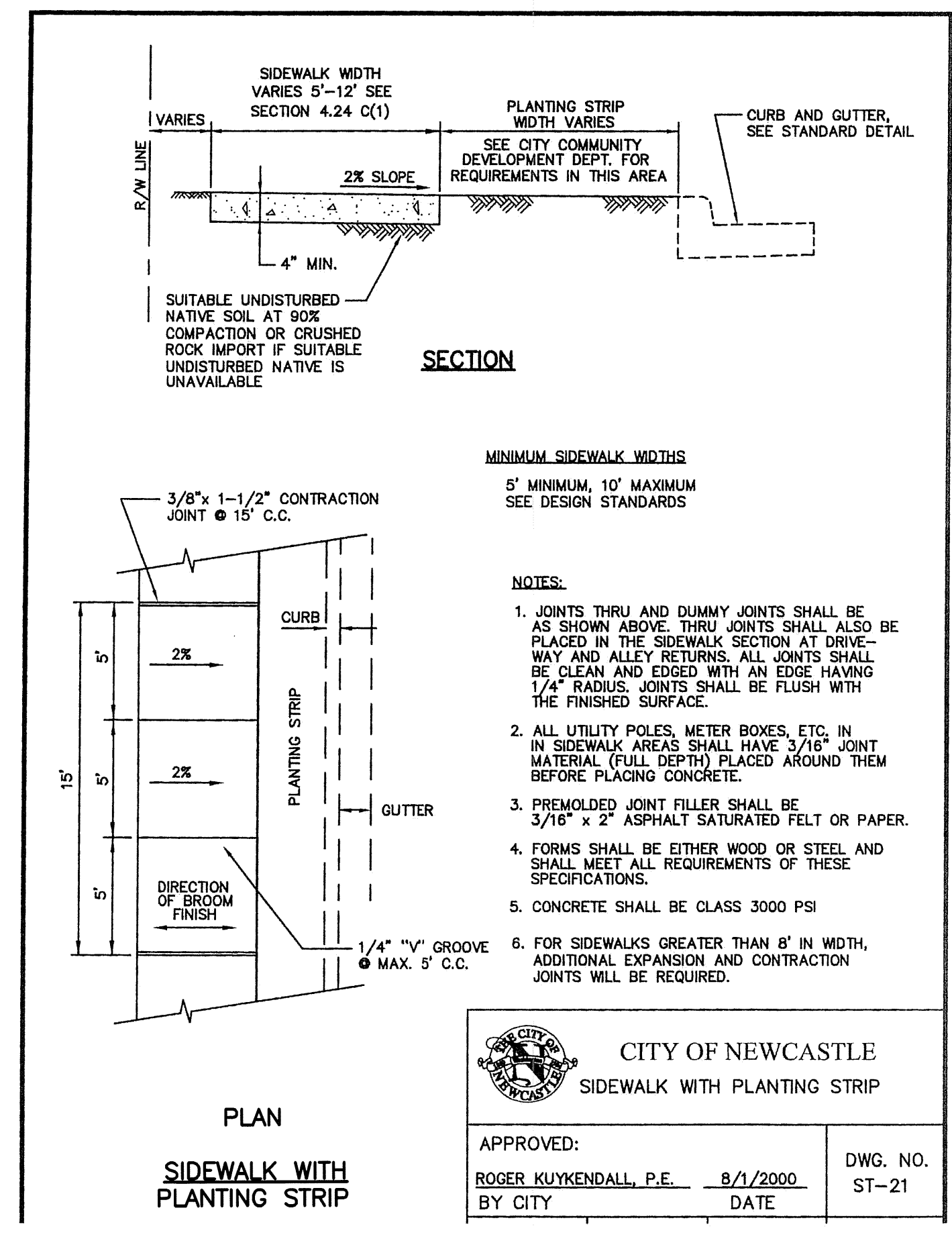
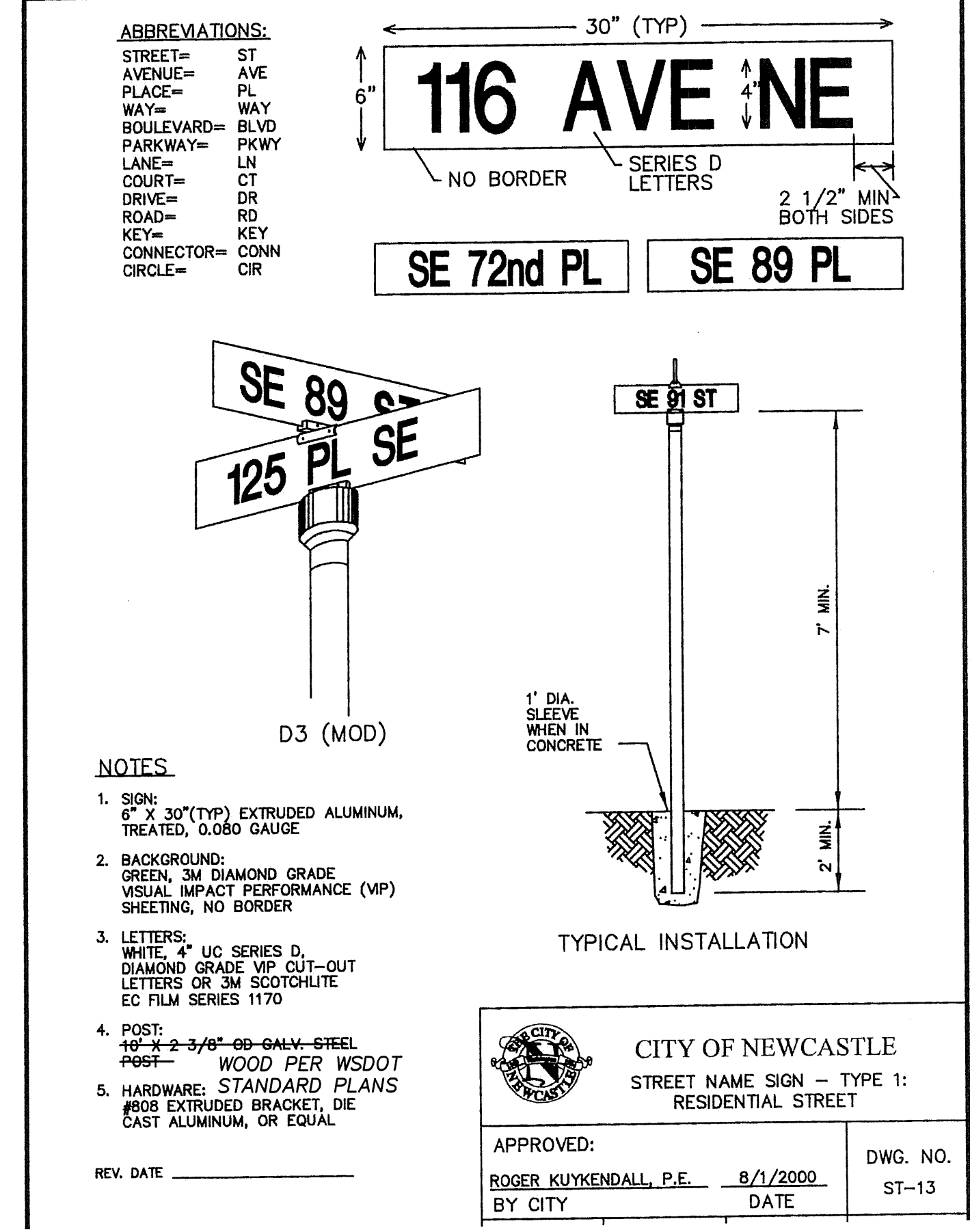
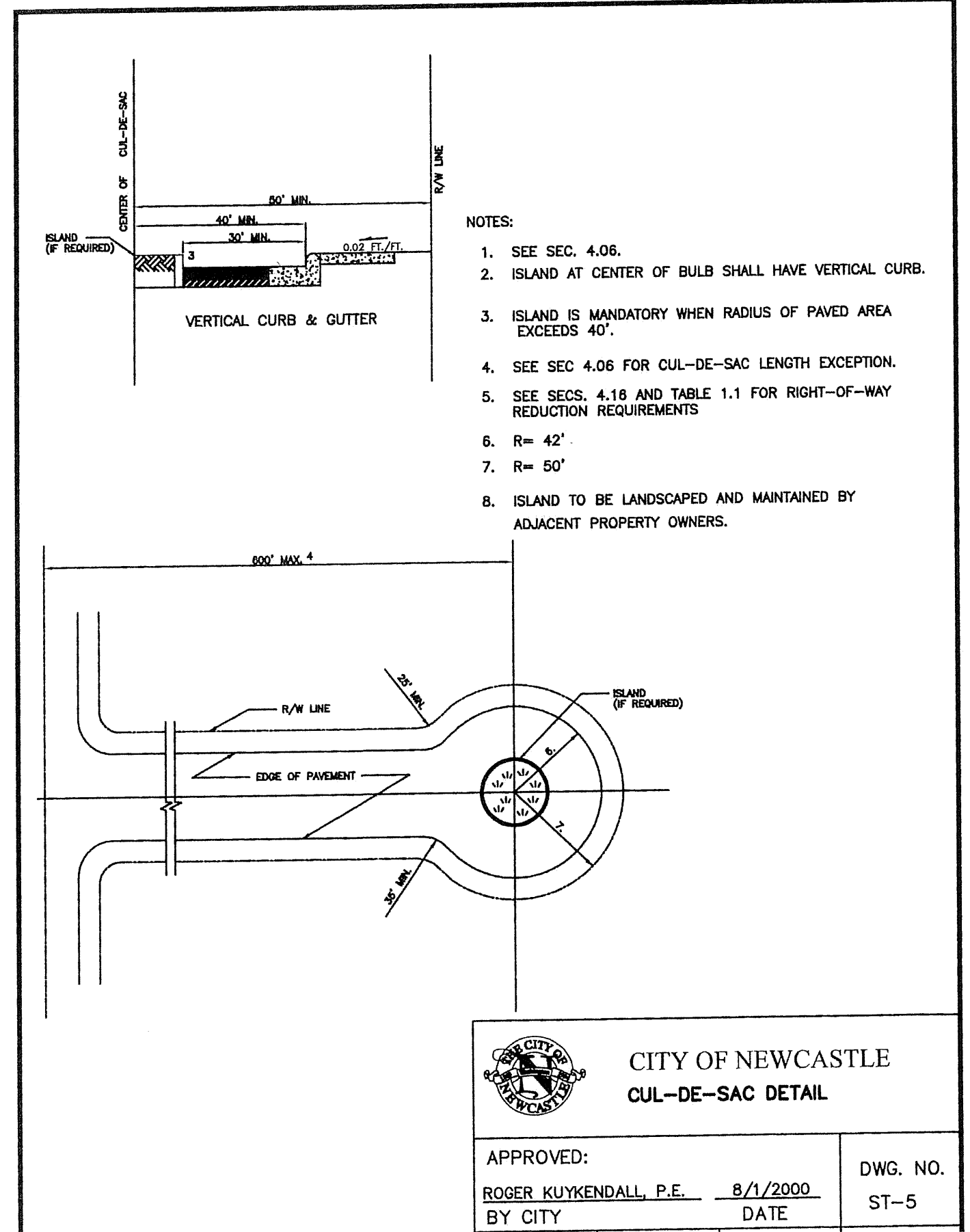
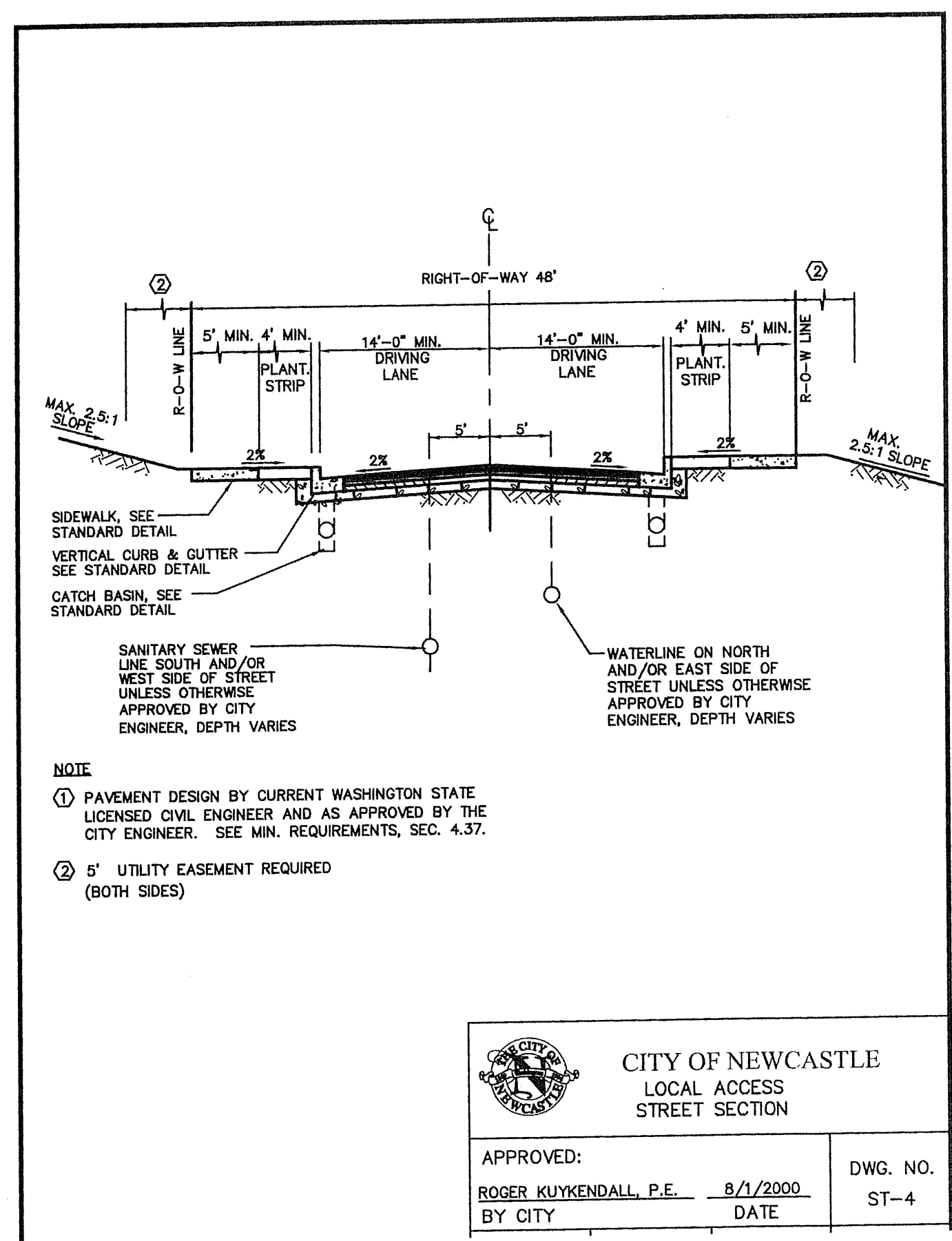
CITY OF NEWCASTLE

LAWRENCE PARK
FOR: MR. SCOTT CAMERON
BENT NOSE, LLC
1215 120TH AVE NE, SUITE 110
BELLEVUE, WA 98005
PHONE: (425) 453-9686

PROJECT NO.: 05119
DRAWN BY: RRJ
ISSUE DATE: 04-01-08
SHEET REV.: 08-22-08

DETAILS

05119DT02-C10.DWG
C10



NOTE: ONLY VERTICAL CONCRETE AND GUTTER IS REFERENCED FOR THIS PROJECT