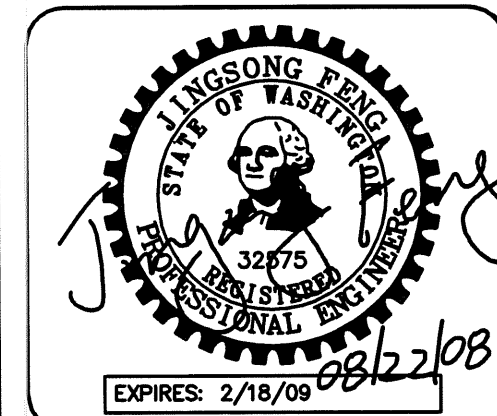


PORTION OF THE SW 1/4 OF THE NW 1/4 OF SEC. 33, TWN. 24N., RGE. 5E., W.M.
MATCHLINE SEE LOWER LEFT

APPROVED FOR CONSTRUCTION

BY: _____ DATE: _____
CITY OF NEWCASTLE

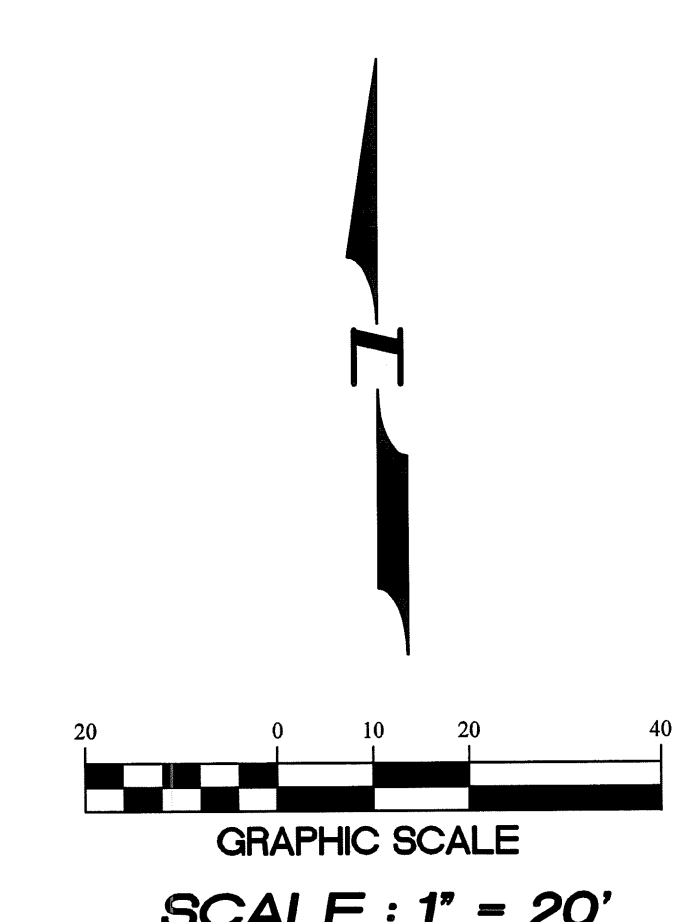


15445 53RD AVE S
SEATTLE, WA 98188
PHONE: (206) 431-7970
FAX: (206) 388-1648
WEB SITE: PACENGL.COM

Pacific
Engineering
Design, LLC

Civil Engineering and
Planning Consultants

THESE DRAWINGS ARE APPROVED FOR CONSTRUCTION FOR A PERIOD OF 12 MONTHS FROM THE DATE SHOWN HEREON. THE CITY RESERVES THE RIGHT TO MAKE REVISIONS, ADDITIONS, DELETIONS, OR MODIFICATIONS SHOULD CONSTRUCTION BE DELAYED BEYOND THIS TIME LIMITATION. THE CITY, BY APPROVING THESE DRAWINGS, ASSUMES NO LIABILITY IN REGARDS TO THEIR ACCURACY OR OMISSIONS.



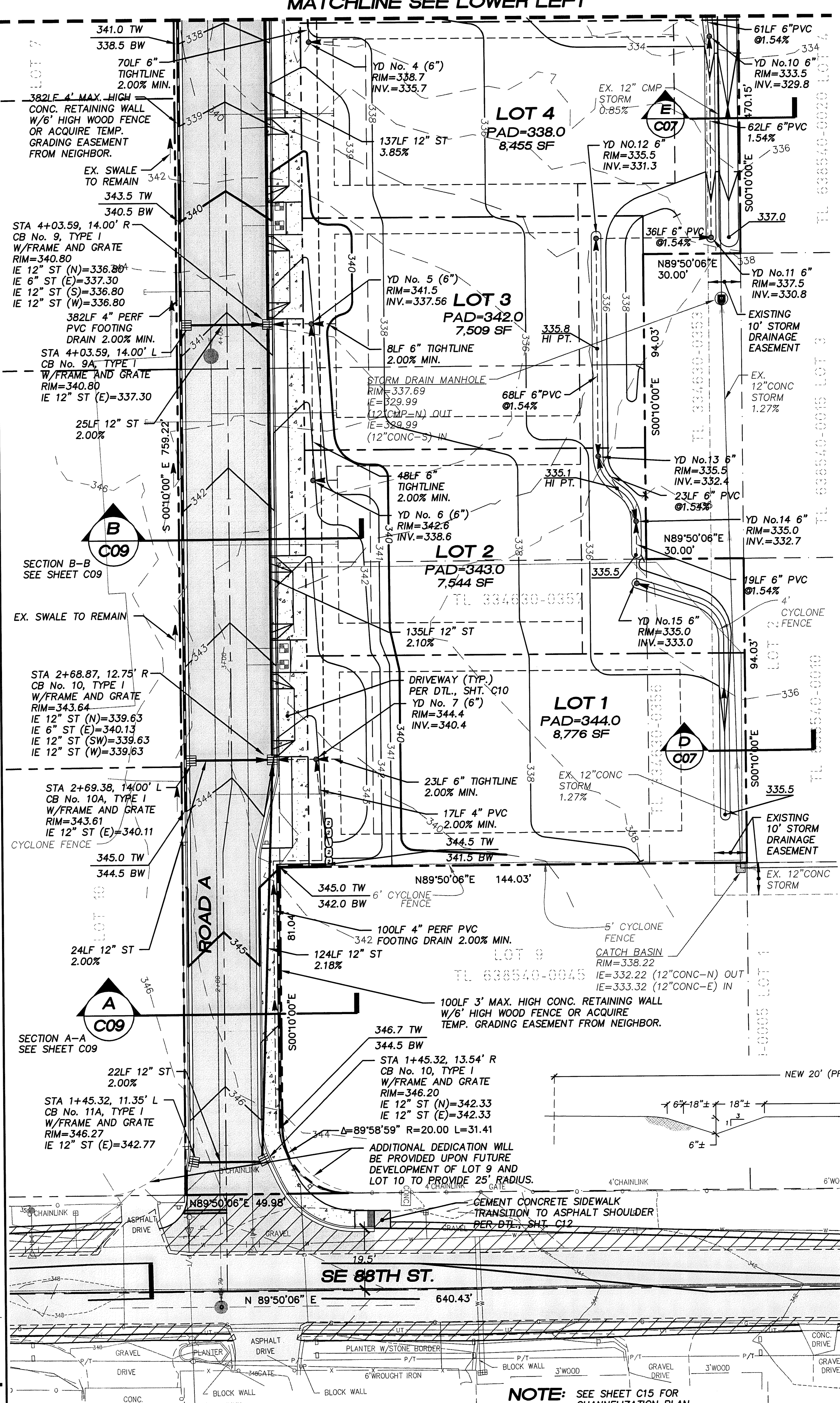
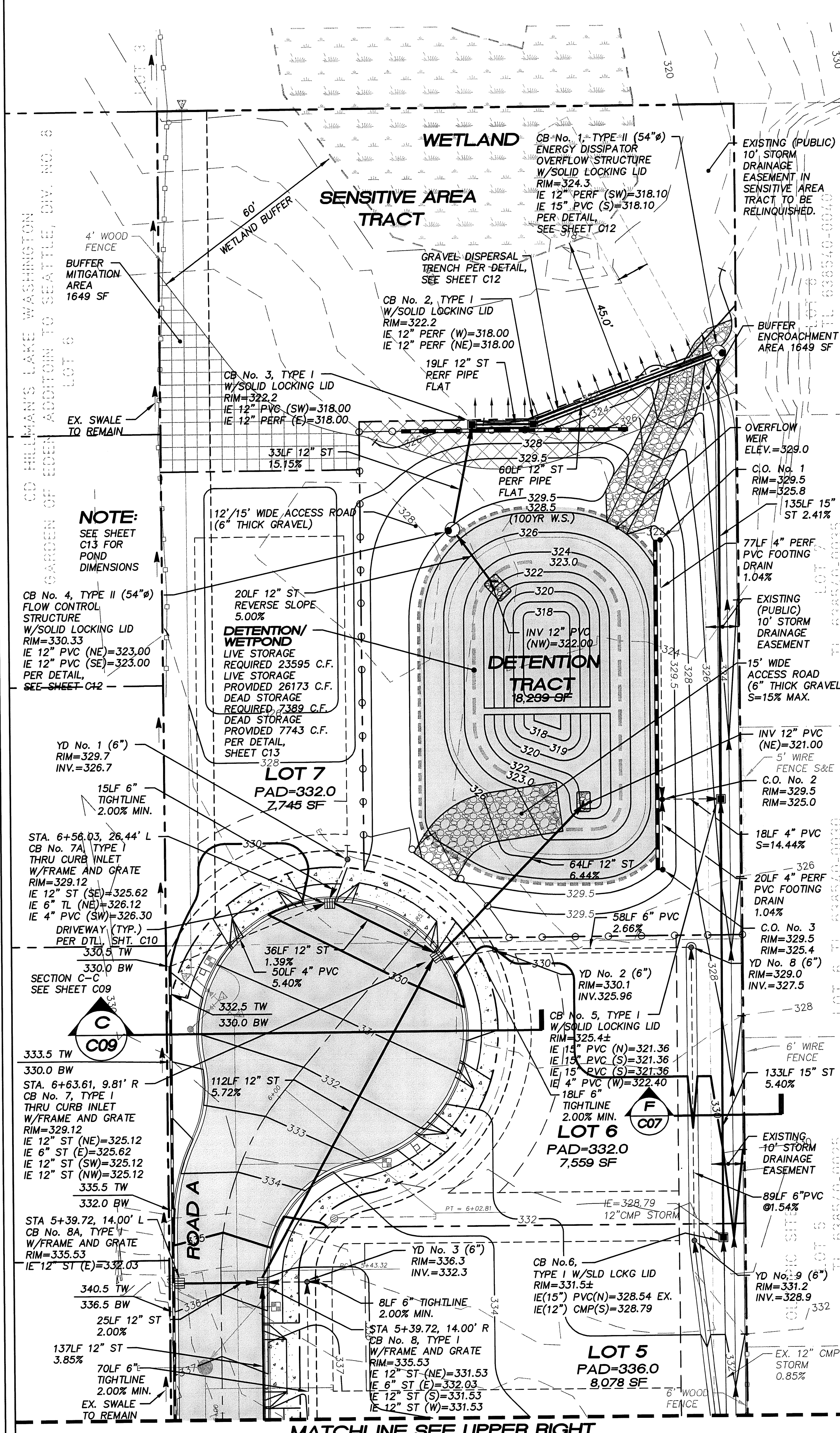
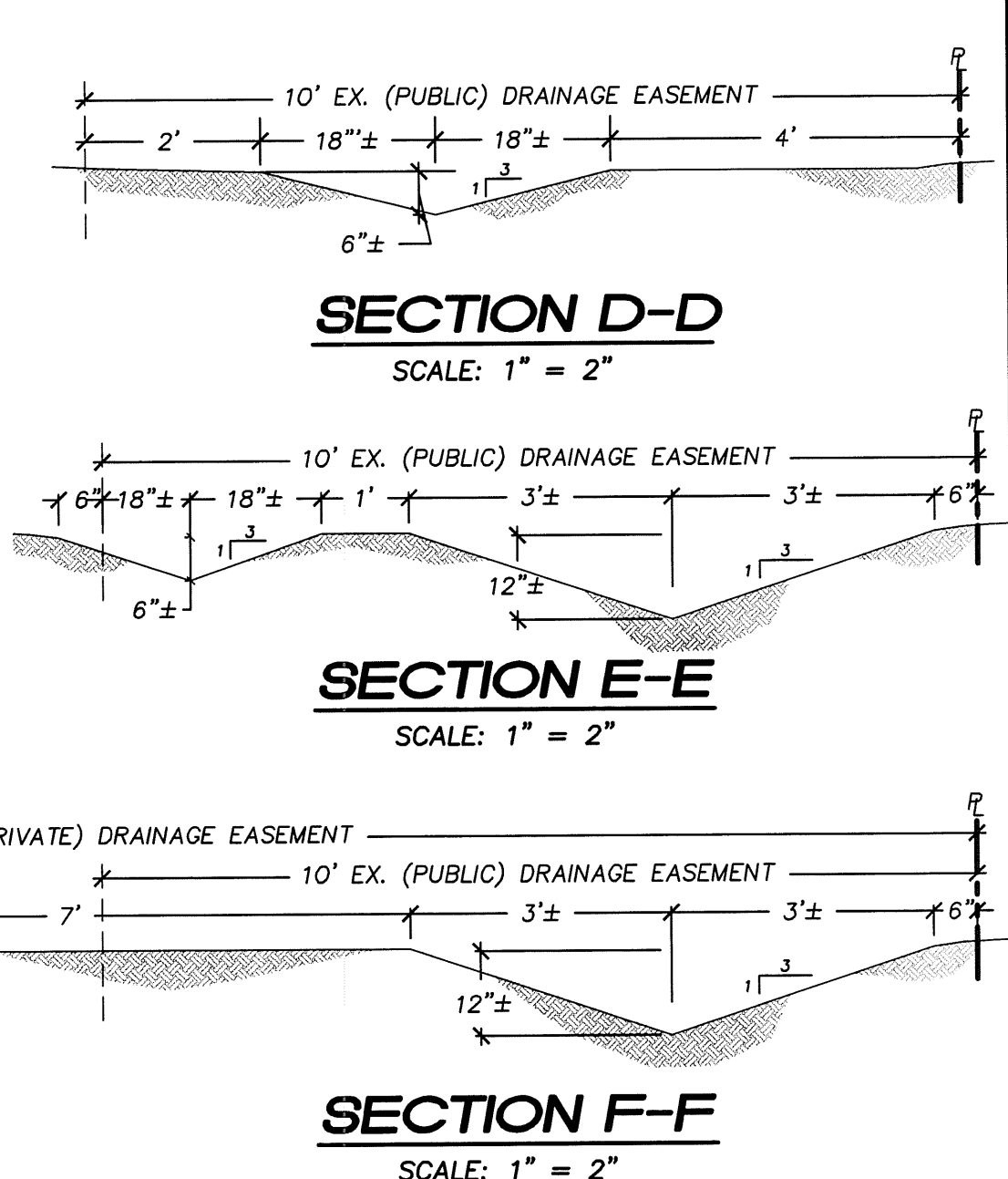
BASIS OF BEARING :

THE MONUMENTED CENTERLINE OF 116TH AVE SE AT BEARING OF S00°10'00"E

BENCH MARK :

VERTICAL DATUM : CITY OF RENTON - NAVD88

CITY OF RENTON No. 1893 CONCRETE MONUMENT WITH BRASS DISK, SET 1.5' BELOW THE TOP OF AN IRON MONUMENT CASE AT THE INTERSECTION OF SE 80TH STREET AND 116TH AVENUE SE SET IN THE CENTER OF THE INTERSECTION. ELEVATION = 321.279 FEET



NOTE: SEE SHEET C15 FOR CHANNELIZATION PLAN

LAWRENCE PARK
CITY OF NEWCASTLE

FOR: MRS. SCOTT CAMERON
1215 120TH AVE NE SUITE 110
BELLEVUE, WA 98005
PHONE: (425) 453-9995

PROJECT NO.: 05119
DRAWN BY: JGC
ISSUE DATE: 04-01-08
SHEET REV.: 08-22-08

GRADING AND DRAINAGE PLAN

05119GD01-C07.DWG
C07